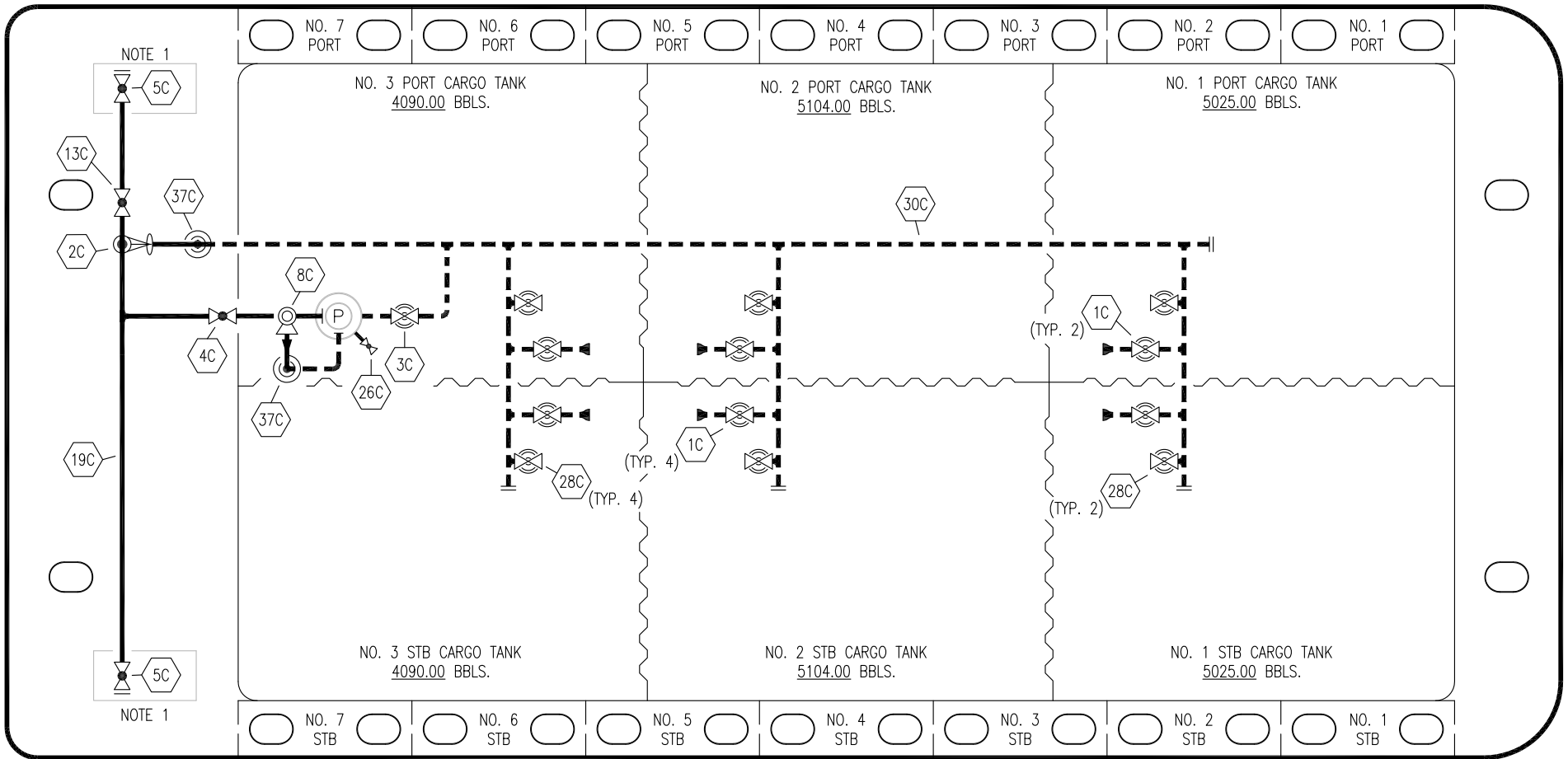


PORT

STERN

BOW

STARBOARD



NO	DESCRIPTION	NO	DESCRIPTION
1C	10" CARGO SUCTION VALVE	26C	PUMP WELL DRAIN VALVE
2C	10" LOAD VALVE	28C	10" HIGH LOAD VALVE
3C	12" MASTER SUCTION VALVE	30C	12" CARGO PIPELINE
4C	8" DISCHARGE VALVE	37C	CARGO DROP
5C	8" HEADER VALVE	—	— ABOVE DECK PIPING
8C	6" RELIEF VALVE	—	— BELOW DECK PIPING
13C	8" CARGO PIPING BLOCK VALVE		
19C	8" CARGO HEADER		

NOTE 1: CONTAINMENT P/S

TRINITY MARINE – EX. WTC 2001–2004

REV.	DATE	BY	CHK	APP	REVISION DESCRIPTION
2	04/27/18	WFB	DDA		REVISED PER CLIENT COMMENTS
1	02/16/18	WFB	DDA		REVISED PER CLIENT COMMENTS
0	11/16/16	WFB	DDA		ISSUED FOR APPROVAL

KIRBY INLAND MARINE 

**CARGO  
PIPING FLOW DIAGRAM**

SCALE: NONE  
PAGE: 1 OF 2

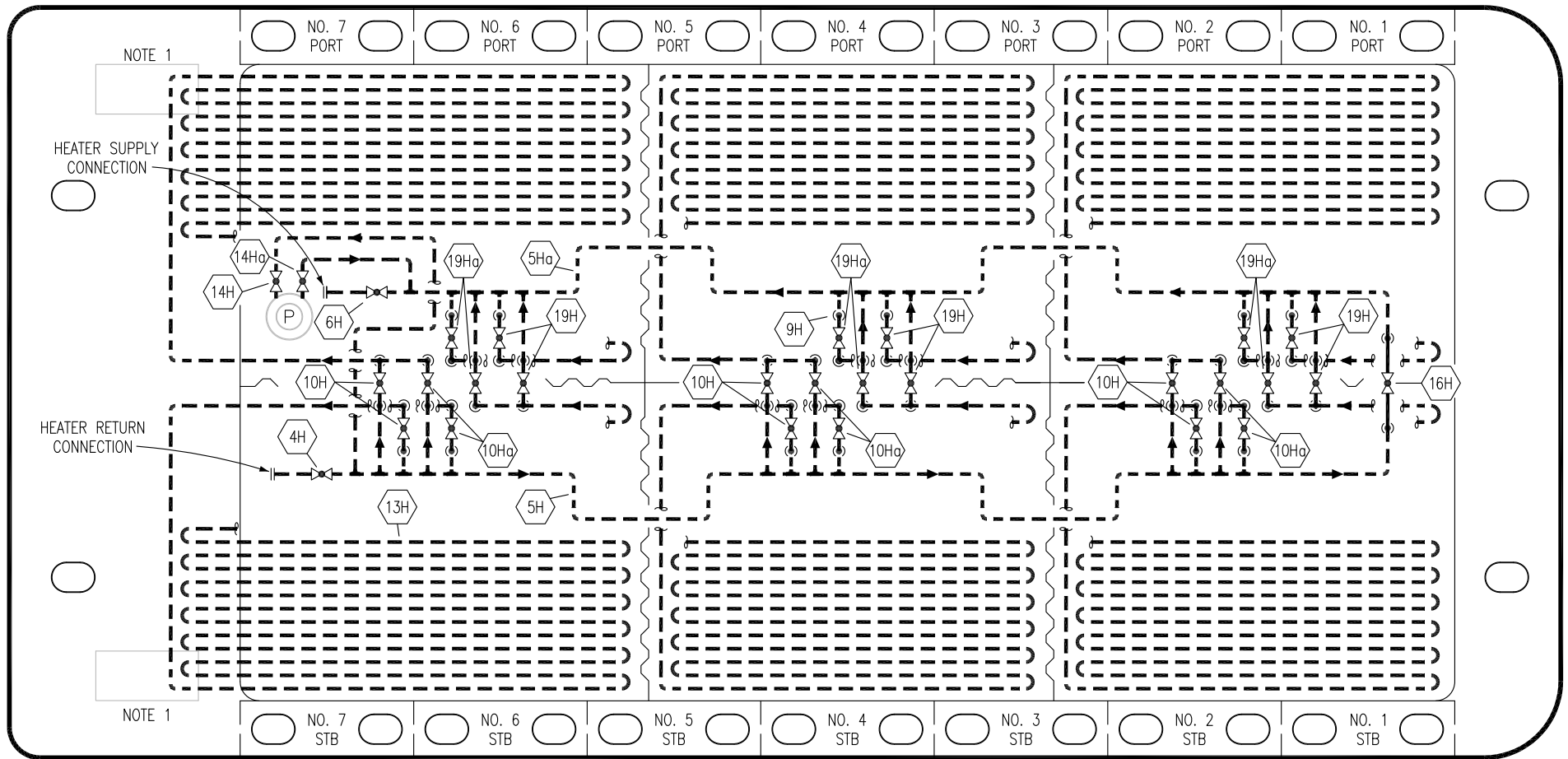
**KIRBY 28745**

REV. **2**

PORT

STERN

BOW



STARBOARD

NO	DESCRIPTION	NO	DESCRIPTION
4H	RETURN MAIN VALVE	16H	SUPPLY/RETURN ISOLATION VALVE
5H	SUPPLY STEAM HEADER	19H	UPPER COIL RETURN VALVE
5Ho	RETURN STEAM HEADER	19Ho	LOWER COIL RETURN VALVE
6H	SUPPLY MAIN VALVE	—	—
9H	STEAM (HEATING) DROP	—	—
10H	UPPER COIL SUPPLY VALVE	—	—
10Ho	LOWER COIL SUPPLY VALVE	—	—
13H	STEAM PIPELINE	—	—
14H	PUMP SUPPLY VALVE	—	—
14Ho	PUMP RETURN VALVE	—	—

— ABOVE DECK PIPING  
 - - - BELOW DECK PIPING

TRINITY MARINE – EX. WTC 2001–2004

KIRBY INLAND MARINE 

### HEATER PIPING FLOW DIAGRAM

REV.	DATE	BY	CHK	APP	REVISION DESCRIPTION
2	04/27/18	WFB	DDA		REVISED PER CLIENT COMMENTS
1	02/16/18	WFB	DDA		REVISED PER CLIENT COMMENTS
0	11/16/16	WFB	DDA		ISSUED FOR APPROVAL

SCALE: NONE  
PAGE: 2 OF 2

# KIRBY 28745

REV. **2**