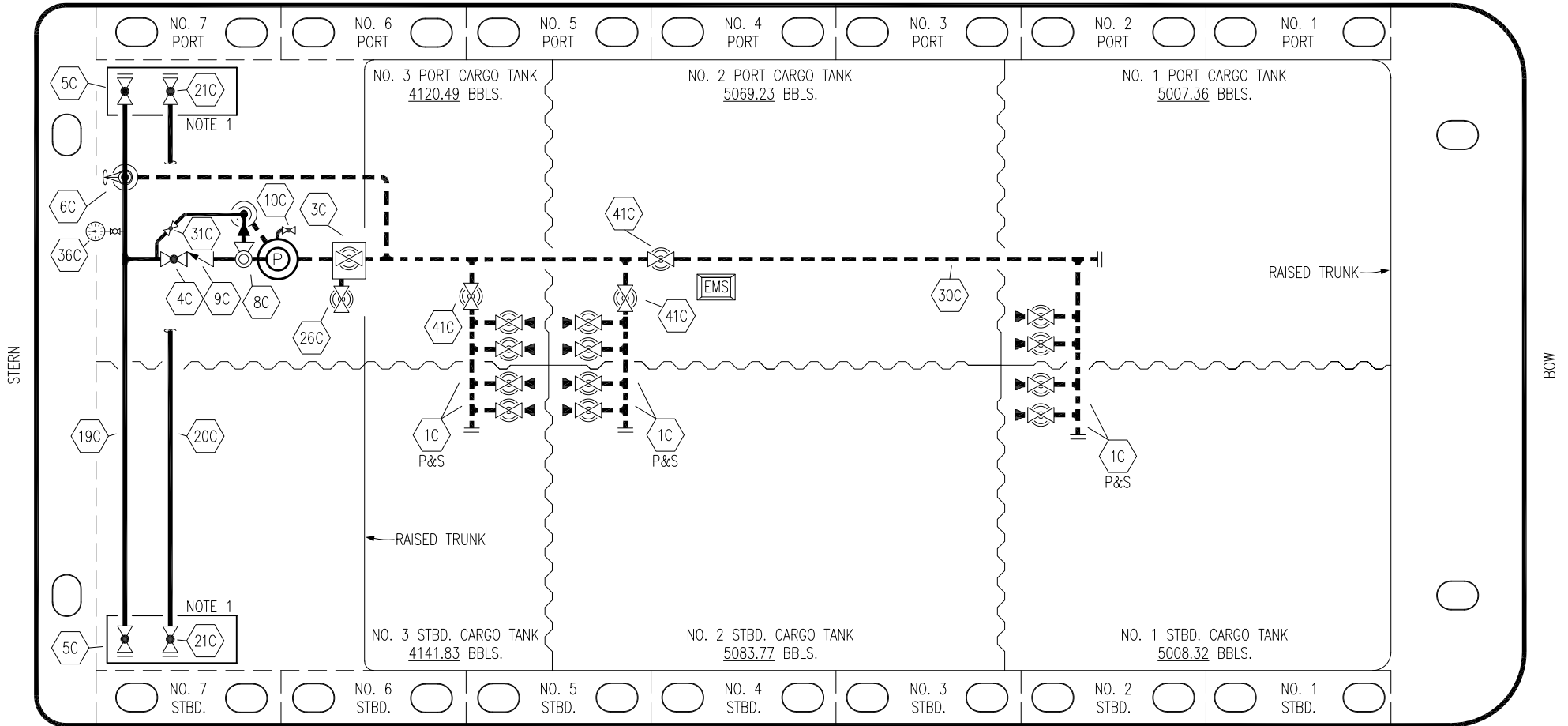


PORT



STERN

BOW


STARBOARD

NO	DESCRIPTION	NO	DESCRIPTION
1C	CARGO TANK VALVE	20C	DUMMY PIPELINE
2C	LOAD VALVE	21C	DUMMY HEADER VALVE
3C	MASTER SUCTION VALVE	26C	DEEP WELL DRAIN VALVE
4C	DISCHARGE VALVE	30C	CARGO PIPELINE
5C	HEADER VALVE	31C	BYPASS VALVE
6C	SALVAGE VALVE	36C	PRESSURE GAUGE
8C	RELIEF VALVE	37C	CARGO DROP
9C	CHECK VALVE	41C	SUCTION BLOCK VALVE
11C	BLEED OFF VALVE	—	— ABOVE DECK PIPING
19C	CARGO HEADER	- - -	- - - BELOW DECK PIPING

NOTE 1: CONTAINMENT P/S

EX: SMS 30039

0	05/10/22	MRV	DDA	JF	ISSUED FOR APPROVAL
REV.	DATE	BY	CHK	APP	REVISION DESCRIPTION



**KIRBY INLAND MARINE**

**CARGO**

**PIPING FLOW DIAGRAM**

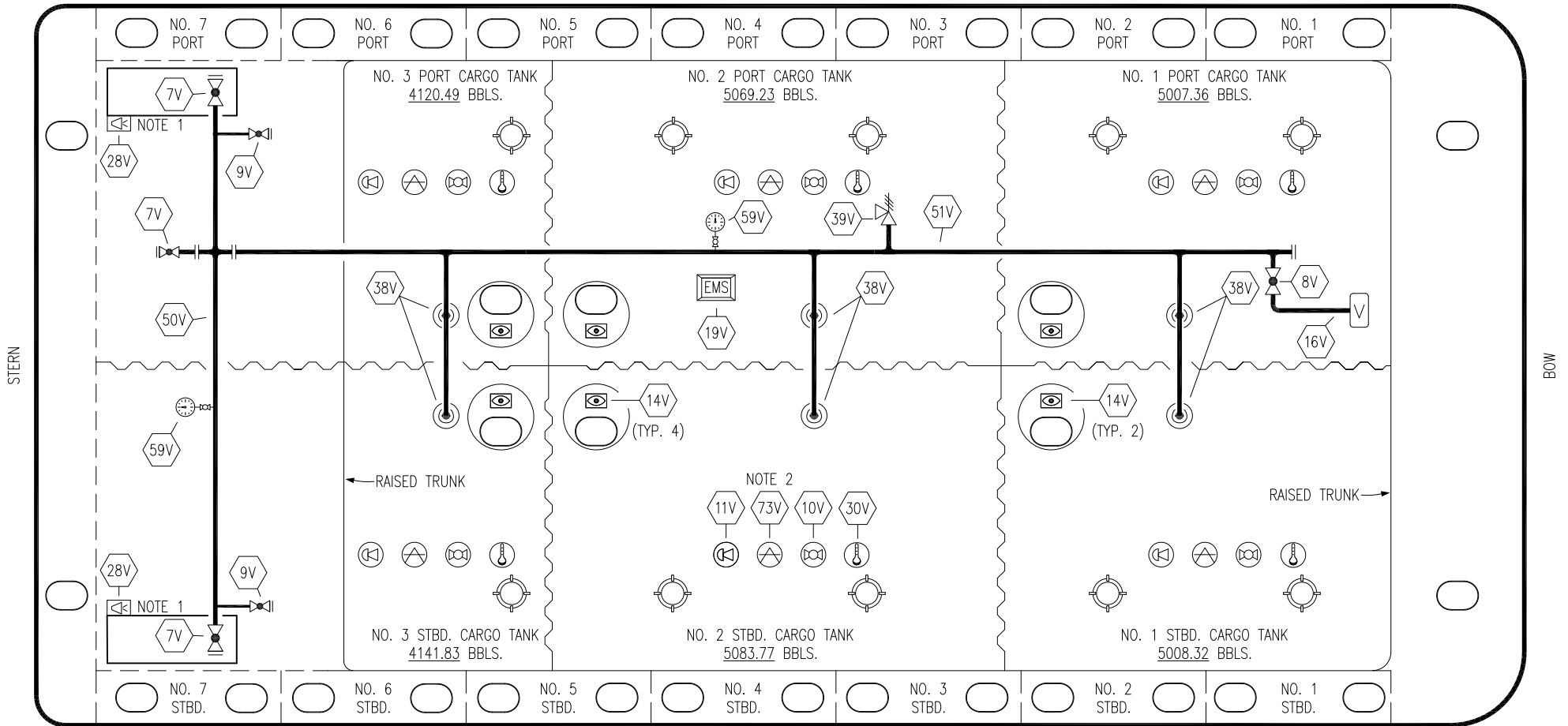
**KIRBY 28738**

SCALE: NONE

PAGE: 1 OF 3

REV. **0**

PORT



STARBOARD

- |     |                            |     |                       |
|-----|----------------------------|-----|-----------------------|
| NO  | DESCRIPTION                | NO  | DESCRIPTION           |
| 7V  | 8" HEADER VALVE            | 38V | 8" VAPOR PENETRATION  |
| 8V  | 8" VENT STACK VALVE        | 39V | PRESSURE/VACUUM VALVE |
| 9V  | DRAIN VALVE                | 50V | 8" VAPOR HEADER       |
| 10V | HIGH LEVEL/OVERFILL ALARM  | 51V | 8" VAPOR PIPELINE     |
| 11V | 1-METER GAUGE STICK        | 59V | PRESS/VAC GAUGE       |
| 16V | VAPOR VENT STACK           | 73V | HERMETIC GAUGE POINT  |
| 19V | EMERGENCY ENGINE SHUT DOWN | —   | ABOVE DECK PIPING     |
| 28V | DOCK CONNECTION ALARM      |     |                       |
| 30V | THERMAL PROBE              |     |                       |

NOTE 2: TYPICAL RIGGING IN EACH TANK

NOTE 1: CONTAINMENT P/S

EX: SMS 30039

0	05/10/22	MRV	DDA	JF	ISSUED FOR APPROVAL
REV.	DATE	BY	CHK	APP	REVISION DESCRIPTION

KIRBY INLAND MARINE

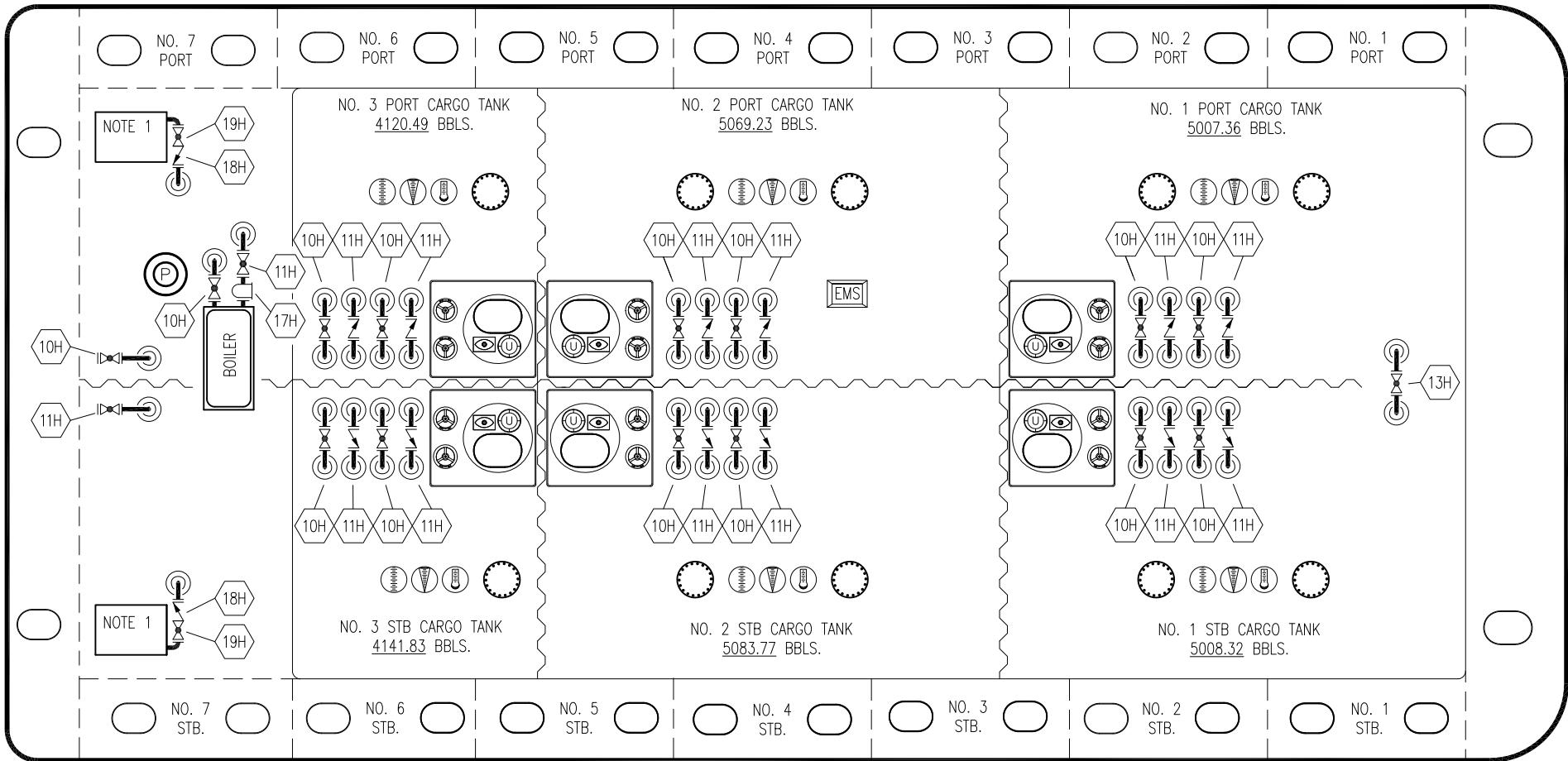
**VAPOR  
PIPING FLOW DIAGRAM**

SCALE: NONE	<b>KIRBY 28738</b>	REV. 0
PAGE: 2 OF 3		

PORT

NO. 7 PORT ○ NO. 6 PORT ○ NO. 5 PORT ○ NO. 4 PORT ○ NO. 3 PORT ○ NO. 2 PORT ○ NO. 1 PORT ○

STERN



BOW


STARBOARD

NO	DESCRIPTION
10H	SUPPLY VALVE
11H	RETURN
12H	PRESSURE REGULATOR
13H	BY-PASS
16H	ISOLATION VALVE
17H	BASKET STRAINER
19H	DRIP PAN DRAIN VALVE

— ABOVE DECK PIPING

NOTE 1: 6 BARREL DRIP PAN

EX: SMS 30039

						<b>KIRBY INLAND MARINE</b> 	
						<b>HOT OIL</b> <b>PIPING FLOW DIAGRAM</b>	
0	05/10/22	MRV	DDA	JF	ISSUED FOR APPROVAL	SCALE: NONE	<b>KIRBY 28738</b>
REV.	DATE	BY	CHK	APP	REVISION DESCRIPTION	PAGE: 3 of 3	

REV. **0**