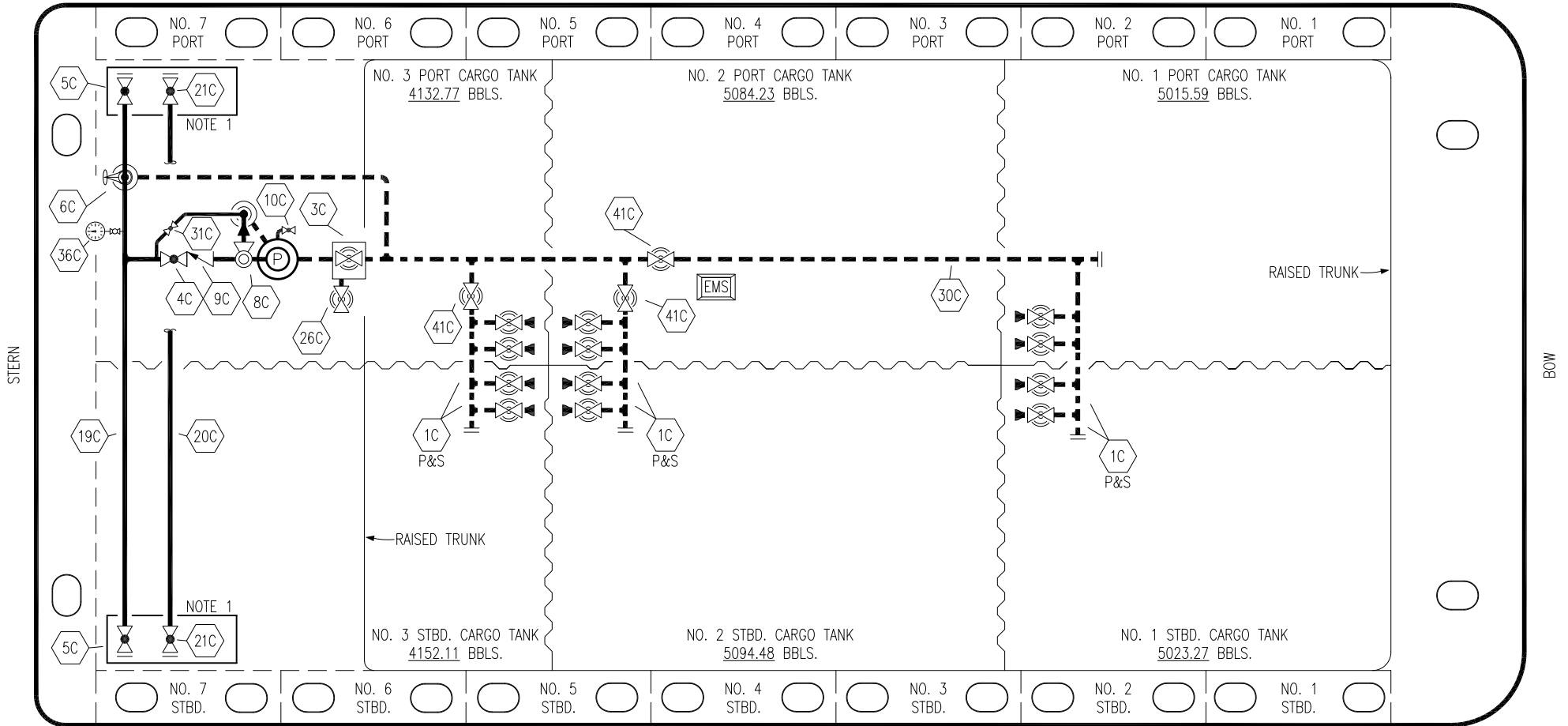


PORT




STARBOARD

- | | | | |
|-----|----------------------|-------|-------------------------|
| NO | DESCRIPTION | NO | DESCRIPTION |
| 1C | CARGO TANK VALVE | 20C | DUMMY PIPELINE |
| 2C | LOAD VALVE | 21C | DUMMY HEADER VALVE |
| 3C | MASTER SUCTION VALVE | 26C | DEEP WELL DRAIN VALVE |
| 4C | DISCHARGE VALVE | 30C | CARGO PIPELINE |
| 5C | HEADER VALVE | 31C | BYPASS VALVE |
| 6C | SALVAGE VALVE | 36C | PRESSURE GAUGE |
| 8C | RELIEF VALVE | 37C | CARGO DROP |
| 9C | CHECK VALVE | 41C | SUCTION BLOCK VALVE |
| 11C | BLEED OFF VALVE | — | — ABOVE DECK PIPING |
| 19C | CARGO HEADER | - - - | - - - BELOW DECK PIPING |

NOTE 1: CONTAINMENT P/S

EX: SMS 30038

0	06/01/22	MRV	DDA	TAB	ISSUED FOR APPROVAL
REV.	DATE	BY	CHK	APP	REVISION DESCRIPTION



KIRBY INLAND MARINE

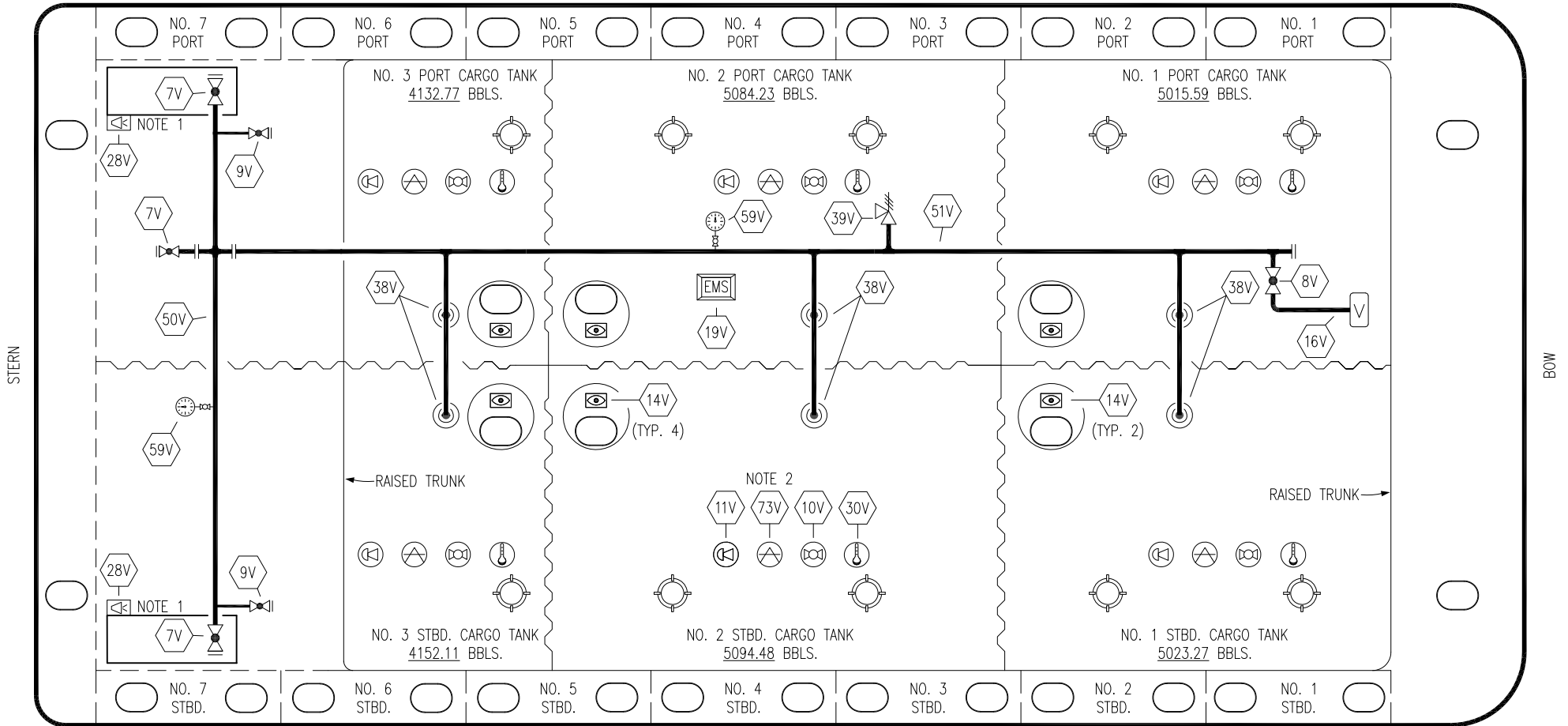
CARGO

PIPING FLOW DIAGRAM

KIRBY 28737

SCALE: NONE	REV. 0
PAGE: 1 OF 3	

PORT



STERN

BOW

STARBOARD

- | | | | |
|-----|----------------------------|-----|--------------------------|
| NO | DESCRIPTION | NO | DESCRIPTION |
| 7V | 8" HEADER VALVE | 38V | 8" VAPOR PENETRATION (⊙) |
| 8V | 8" VENT STACK VALVE | 39V | PRESSURE/VACUUM VALVE |
| 9V | DRAIN VALVE | 50V | 8" VAPOR HEADER |
| 10V | HIGH LEVEL/OVERFILL ALARM | 51V | 8" VAPOR PIPELINE |
| 11V | 1-METER GAUGE STICK | 59V | PRESS/VAC GAUGE |
| 16V | VAPOR VENT STACK | 73V | HERMETIC GAUGE POINT |
| 19V | EMERGENCY ENGINE SHUT DOWN | — | ABOVE DECK PIPING |
| 28V | DOCK CONNECTION ALARM | | |
| 30V | THERMAL PROBE | | |

NOTE 2: TYPICAL RIGGING IN EACH TANK
 NOTE 1: CONTAINMENT P/S

EX: SMS 30038

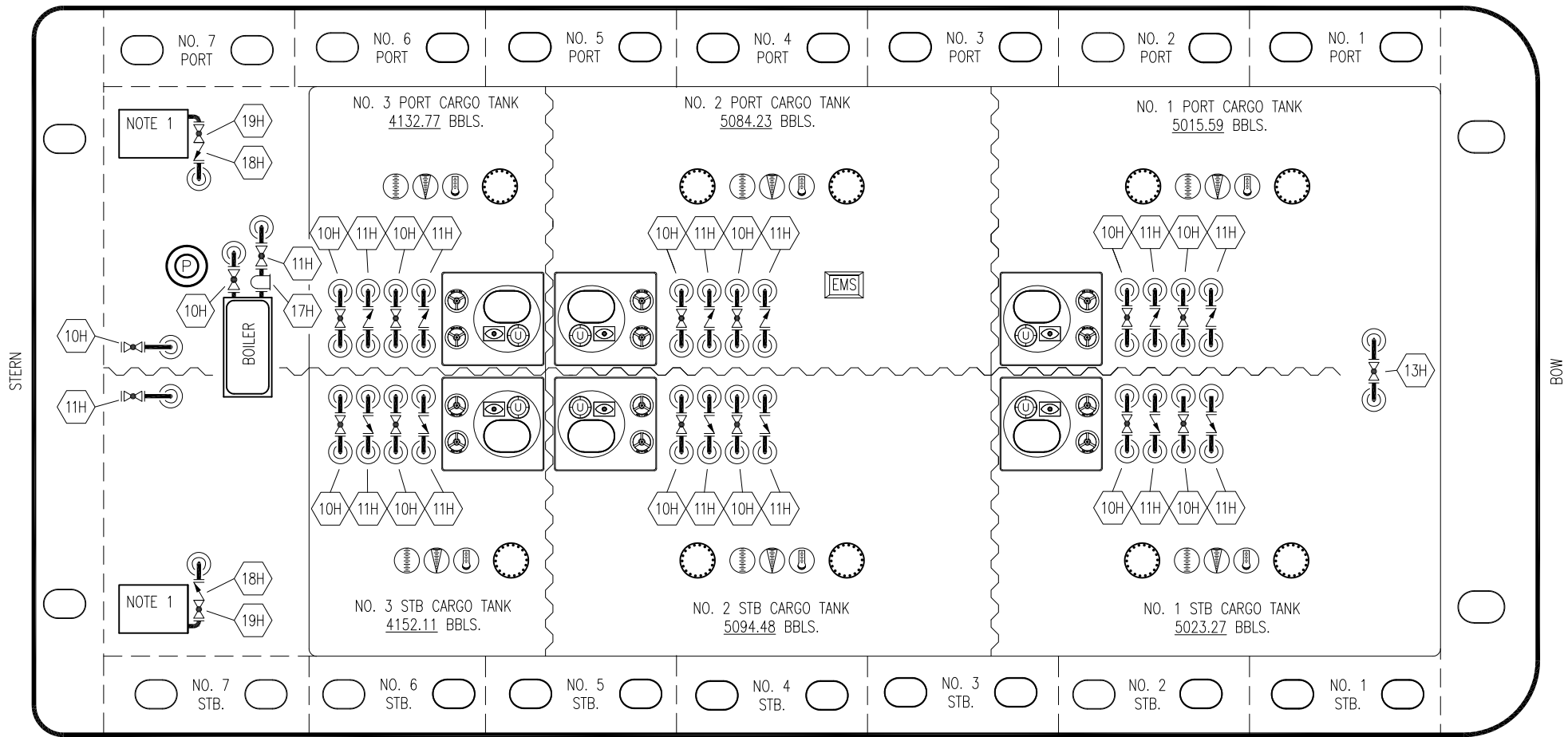
0	06/01/22	MRV	DDA	TAB	ISSUED FOR APPROVAL
REV.	DATE	BY	CHK	APP	REVISION DESCRIPTION

KIRBY INLAND MARINE

**VAPOR
PIPING FLOW DIAGRAM**

SCALE: NONE	KIRBY 28737	REV. 0
PAGE: 2 OF 3		

PORT



STERN

BOW

STARBOARD

NO DESCRIPTION

10H SUPPLY VALVE

11H RETURN

12H PRESSURE REGULATOR

13H BY-PASS

16H ISOLATION VALVE

17H BASKET STRAINER

19H DRIP PAN DRAIN VALVE

— ABOVE DECK PIPING

NOTE 1: 6 BARREL DRIP PAN

EX: SMS 30038

0	06/01/22	MRV	DDA	TAB	ISSUED FOR APPROVAL	
REV.	DATE	BY	CHK	APP	REVISION	DESCRIPTION

KIRBY INLAND MARINE 

**HOT OIL
PIPING FLOW DIAGRAM**

SCALE: NONE
PAGE: 3 of 3

KIRBY 28737 REV. **0**