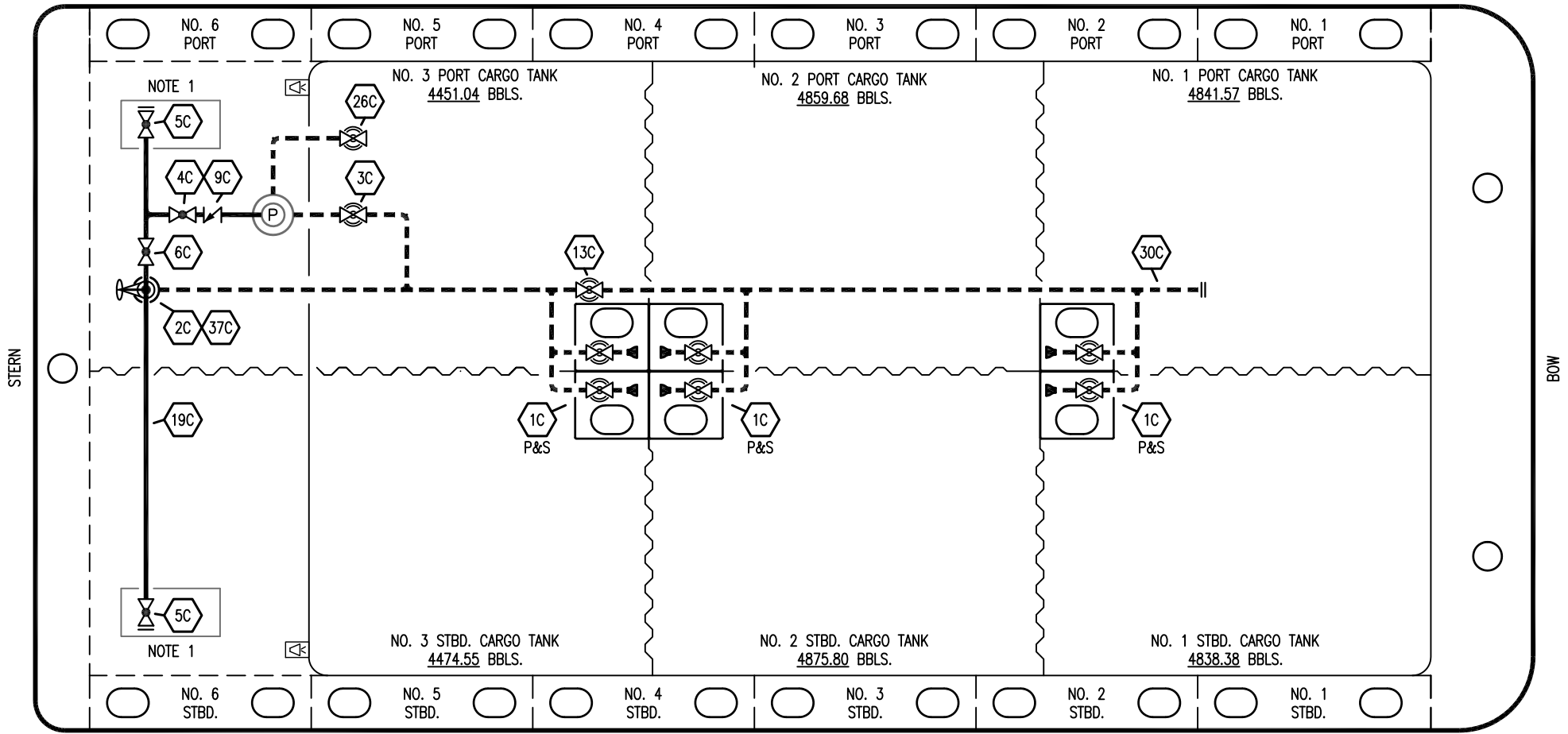



PORT



STERN

BOW

STARBOARD

- | | | | |
|-----|--------------------------|-----|--|
| NO | DESCRIPTION | NO | DESCRIPTION |
| 1C | CARGO TANK VALVE | 19C | CARGO HEADER |
| 2C | LOAD VALVE | 26C | DRAIN VALVE |
| 3C | MASTER SUCTION VALVE | 30C | CARGO PIPELINE |
| 4C | DISCHARGE VALVE | 37C | CARGO DROP  |
| 5C | HEADER VALVE | --- | ABOVE DECK PIPING |
| 6C | SALVAGE VALVE | --- | BELOW DECK PIPING |
| 9C | CHECK VALVE | | |
| 13C | CARGO PIPING BLOCK VALVE | | |

NOTE 1: CONTAINMENT P/S

TRINITY MARINE

REV.	DATE	BY	CHK	APP	REVISION DESCRIPTION
2	04/28/23	MRV	DDA	RM	REVISED PER CLIENT COMMENTS
1	10/17/13	DCB	DDA		REVISED PIPING
0	02/01/10	RB	RB	OF	APPROVED

KIRBY INLAND MARINE 

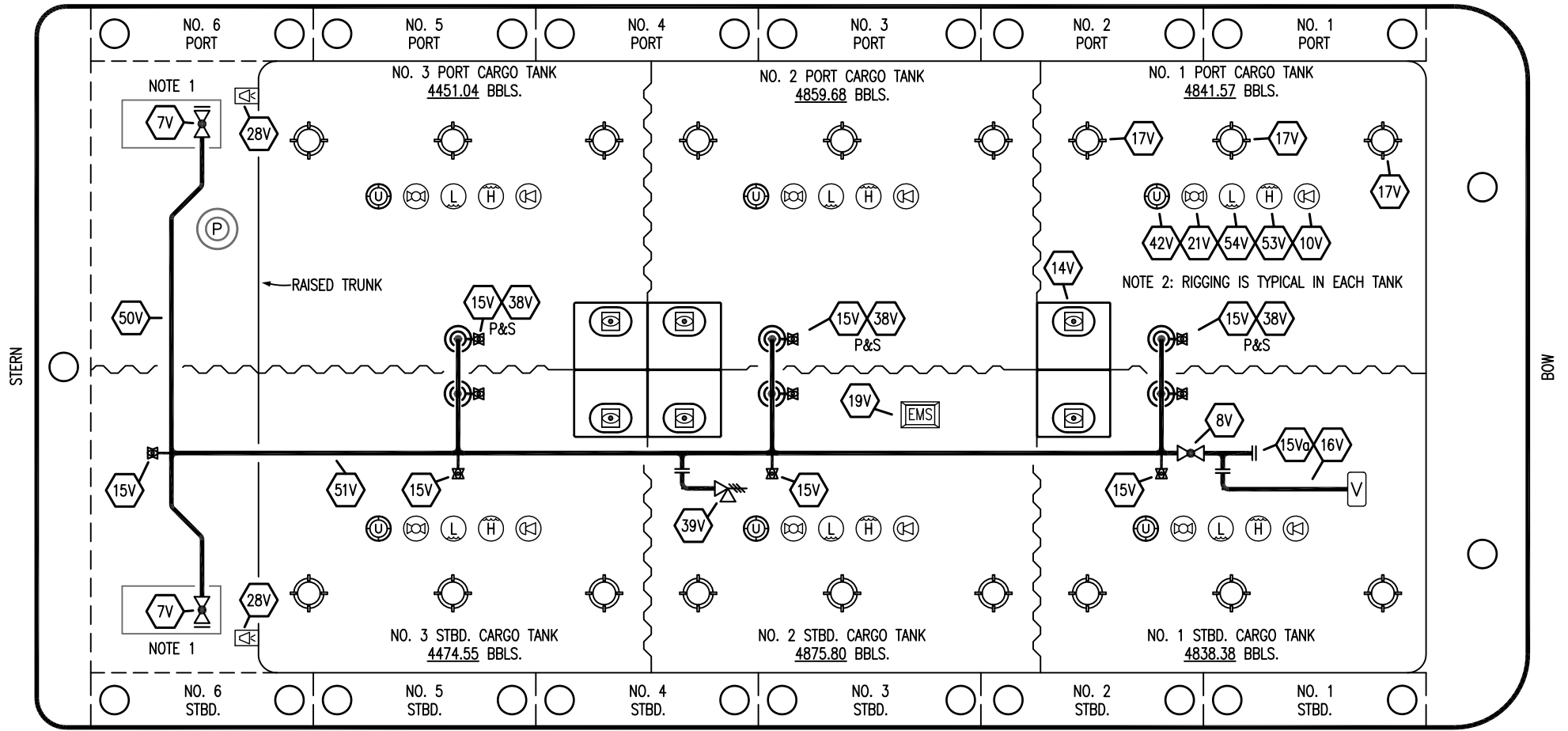
**CARGO
PIPING DIAGRAM**

SCALE: NONE
PAGE: 1 OF 4

KIRBY 28726

REV. **2**

PORT



STARBOARD

- | | | | |
|------|-----------------------------|-----|--------------------------|
| NO | DESCRIPTION | NO | DESCRIPTION |
| 7V | 8" HEADER VALVE | 21V | 2" HERMETIC GAUGE |
| 8V | 8" VENT STACK VALVE | 28V | DOCK CONNECTION ALARM |
| 10V | HIGH LEVEL/OVERFILL ALARM | 38V | 8" VAPOR DROP |
| 14V | 6" SIGHT GLASS W/GAUGE TREE | 39V | 8" PRESSURE/VACUUM VALVE |
| 15V | 2" INSPECTION PORT | 42V | 8" ULLAGE HATCH |
| 15Va | 8" INSPECTION PORT | 50V | 8" VAPOR HEADER |
| 16V | 8" VAPOR VENT STACK | 51V | 8" VAPOR PIPELINE |
| 17V | 14" BUTTERWORTH | 53V | 8" HIGH LEVEL GAUGE |
| 19V | EMERGENCY ENGINE SHUT DOWN | 54V | 8" LOW LEVEL GAUGE |
| | | | ABOVE DECK PIPING |

NOTE 1: CONTAINMENT P/S
NOTE 2: RIGGING IS TYPICAL IN EACH TANK

TRINITY MARINE

1	04/28/23	MRV	DDA	RM	REVISED PER CLIENT COMMENTS
0	02/01/10	DB	RB	OF	APPROVED
REV.	DATE	BY	CHK	APP	REVISION DESCRIPTION

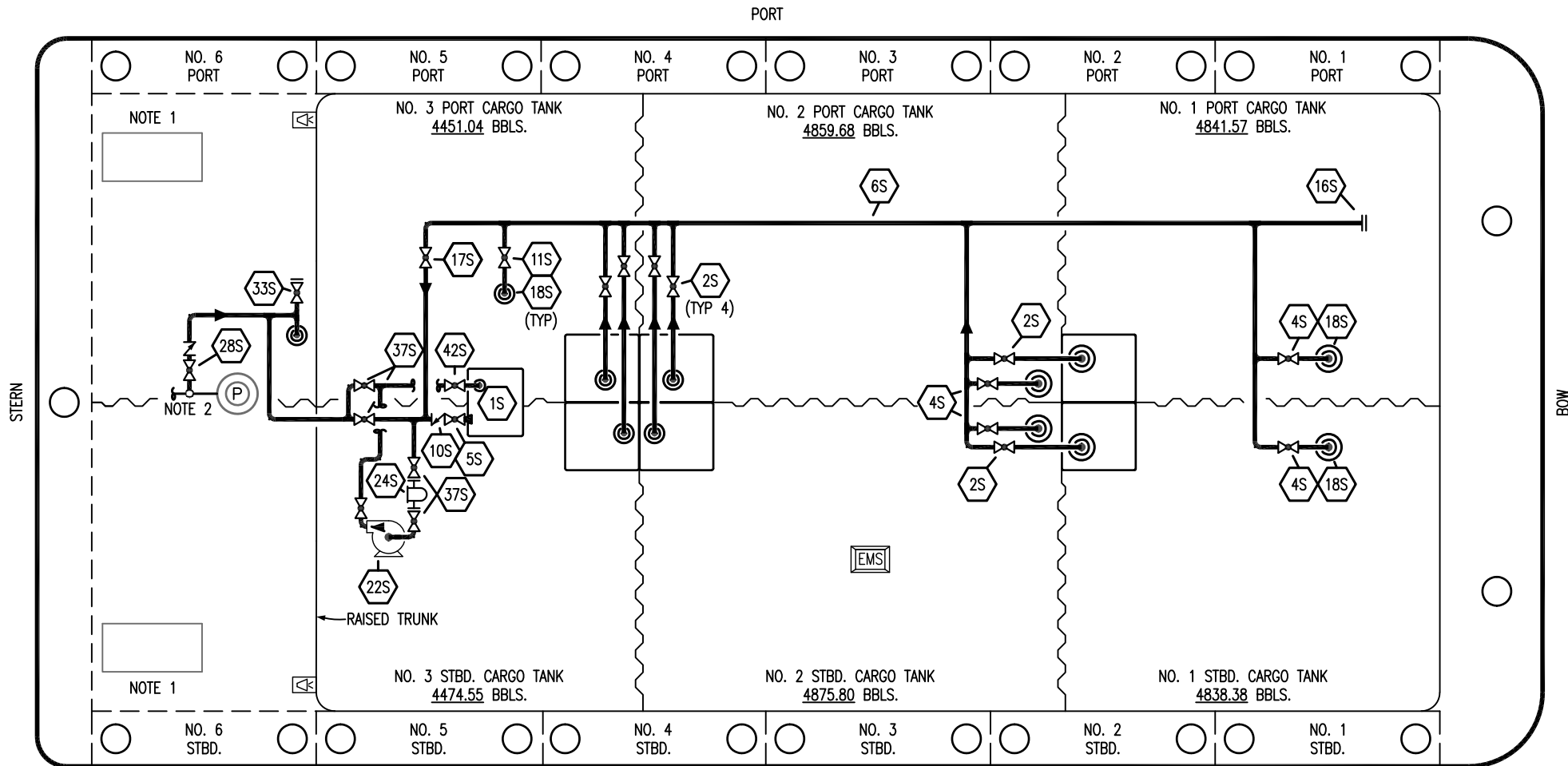
KIRBY INLAND MARINE

VAPOR
PIPING DIAGRAM

KIRBY 28726

SCALE: NONE
PAGE: 2 OF 4

REV. 1



NO DESCRIPTION

- 1S SLOP TANK
- 2S CARGO SUMP SUCTION VALVE
- 4S CARGO TANK SUCTION VALVE
- 5S SLOP TANK SUCTION VALVE
- 6S SUCTION HEADER PIPING
- 8S DISCHARGE HEADER PIPING
- 10S SLOP TANK CHECK VALVE
- 11S LOWER CARGO PIPELINE SUCTION VALVE
- 12S RETURN TO CARGO TANK VALVE
- 13S RETURN TO CARGO CHECK VALVE
- 16S REMOTE SUCTION CONNECTION
- 17S FORWARD CARGO TANK ISOLATION

NO DESCRIPTION

- 18S STRIPPING DROP
- 22S STRIPPING PUMP
- 24S BASKET STRAINER
- 28S BYPASS
- 31S CHECK VALVE
- 33S PUMP WELL SUCTION VALVE
- 36S STRIPPING PUMP DISCHARGE VALVE
- 37S BLOCK VALVE
- 42S SLOP TANK FILL VALVE
- 43S DRIP PAN SUCTION VALVE
- ABOVE DECK PIPING

STARBOARD

NOTE 1: CONTAINMENT P/S
NOTE 2: CONNECTS TO CARGO DISCHARGE PIPING

TRINITY MARINE

KIRBY INLAND MARINE

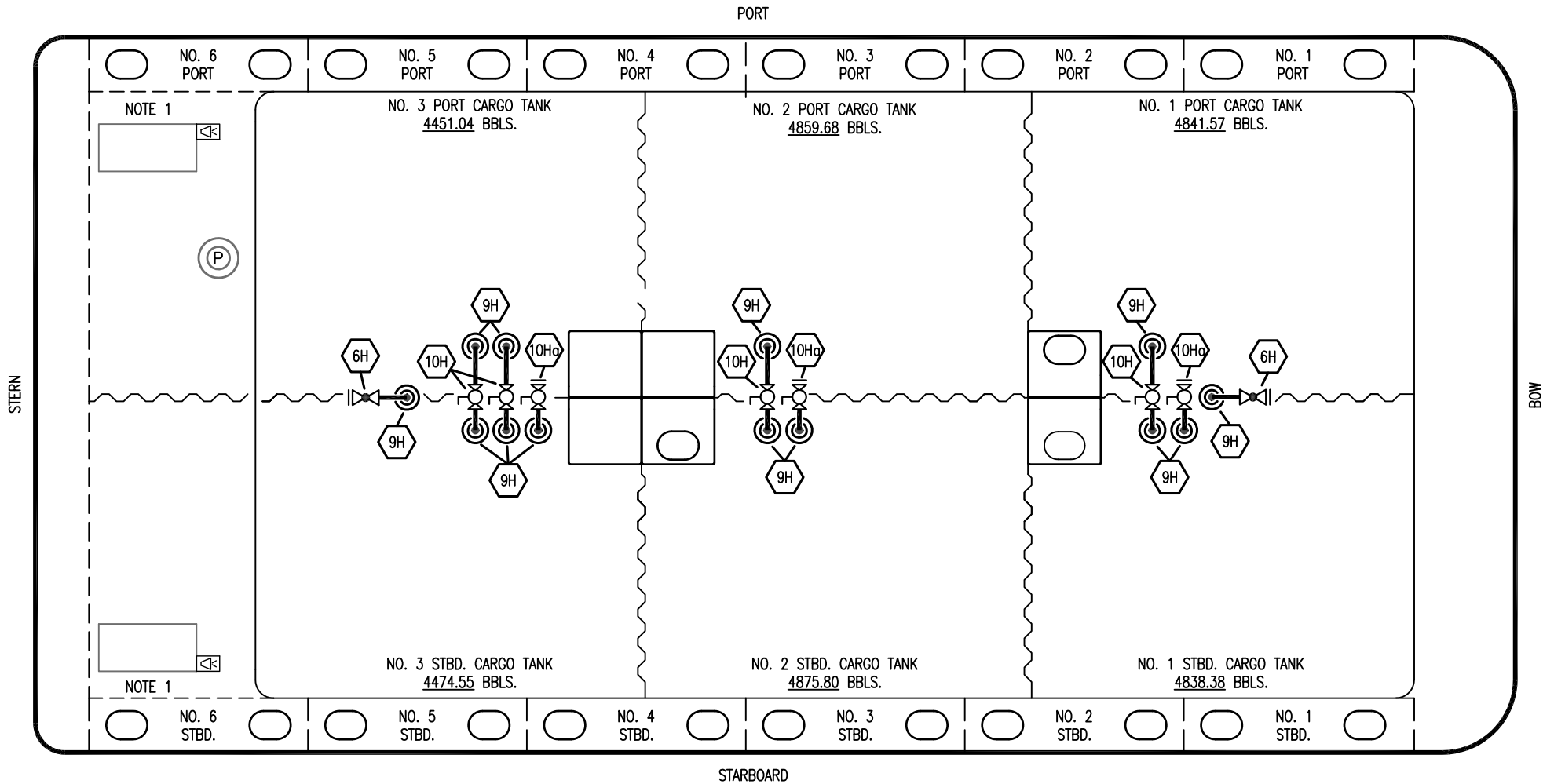
**STRIPPING
PIPING DIAGRAM**

1	04/28/23	MRV	DDA	RM	REVISED PER CLIENT COMMENTS				
0	02/01/10	DB	RB	OF	APPROVED				
REV.	DATE	BY	CHK	APP	REVISION DESCRIPTION				

SCALE: NONE
PAGE: 3 OF 4

KIRBY 28726

REV. **1**



- | NO | DESCRIPTION |
|------|---------------------------------|
| 6H | HEADER VALVE (SHORE CONNECTION) |
| 9H | STEAM DROP |
| 10H | SUPPLY VALVE |
| 10Ha | DEEP WELL SUPPLY VALVE |

NOTE 1: CONTAINMENT P/S

TRINITY MARINE

REV.	DATE	BY	CHK	APP	REVISION DESCRIPTION
1	04/28/23	MRV	DDA	RM	REVISED PER CLIENT COMMENTS
0	02/01/10	RB	RB	OF	APPROVED

KIRBY INLAND MARINE

STEAM
PIPING DIAGRAM

SCALE: NONE	KIRBY 28726	REV.	1
PAGE: 4 OF 4			