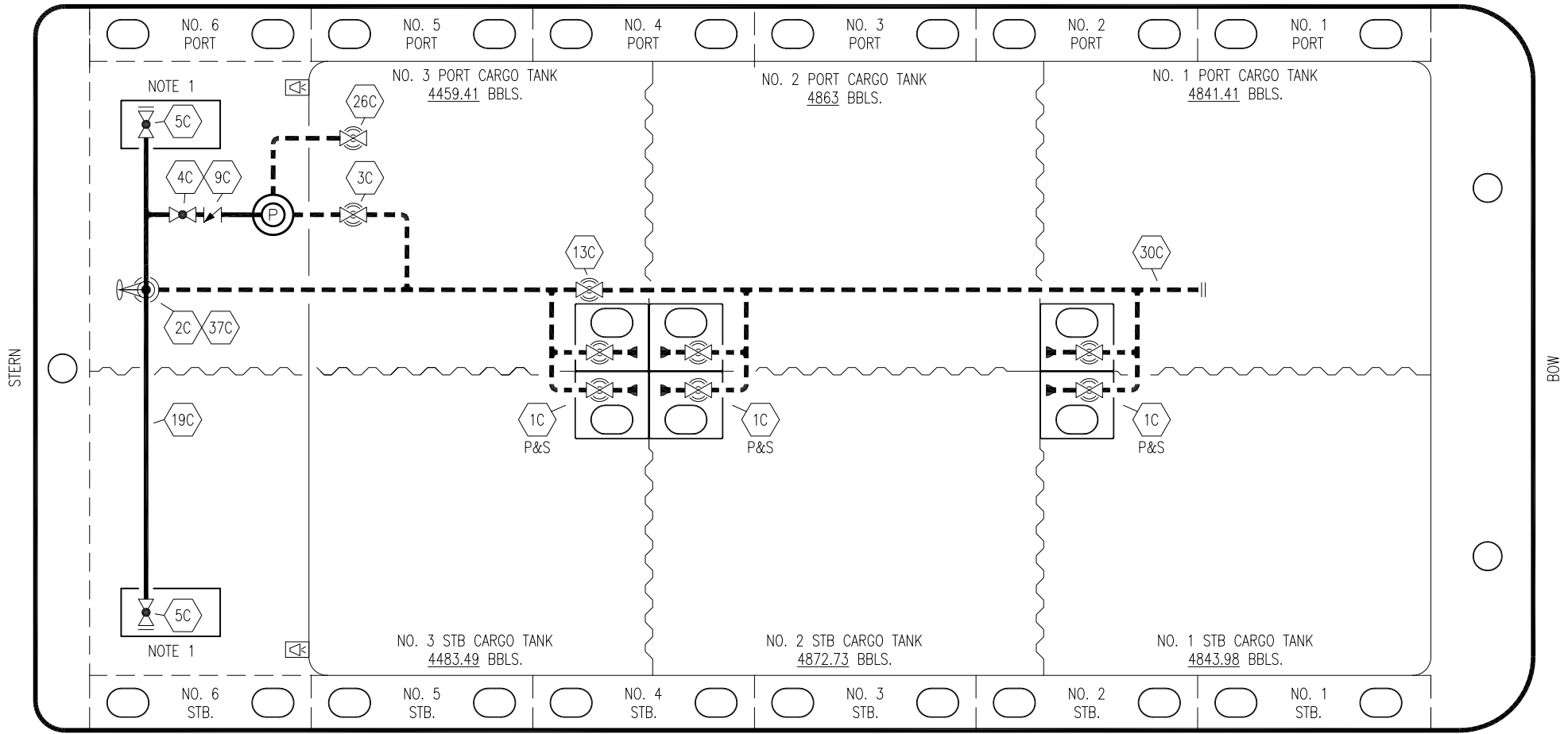


PORT



STARBOARD

- | | | | |
|-----|--------------------------|-----|-----------------------|
| NO | DESCRIPTION | NO | DESCRIPTION |
| 1C | CARGO TANK VALVE | 19C | CARGO HEADER |
| 2C | LOAD VALVE | 26C | DEEP WELL DRAIN VALVE |
| 3C | MASTER SUCTION VALVE | 30C | CARGO PIPELINE |
| 4C | DISCHARGE VALVE | 37C | CARGO DROP |
| 5C | HEADER VALVE | | |
| 6C | SALVAGE VALVE | | |
| 9C | CHECK VALVE | | |
| 13C | CARGO PIPING BLOCK VALVE | | |

- | | |
|-------|-------------------|
| --- | ABOVE DECK PIPING |
| - - - | BELOW DECK PIPING |

NOTE 1: CONTAINMENT P/S

TRINITY MARINE

REV.	DATE	BY	CHK	APP	REVISION DESCRIPTION
1	03/04/22	MRV	DDA	TL	REVISED PER CLIENT COMMENTS
0	02/01/10	RB	RB	OF	APPROVED

KIRBY INLAND MARINE

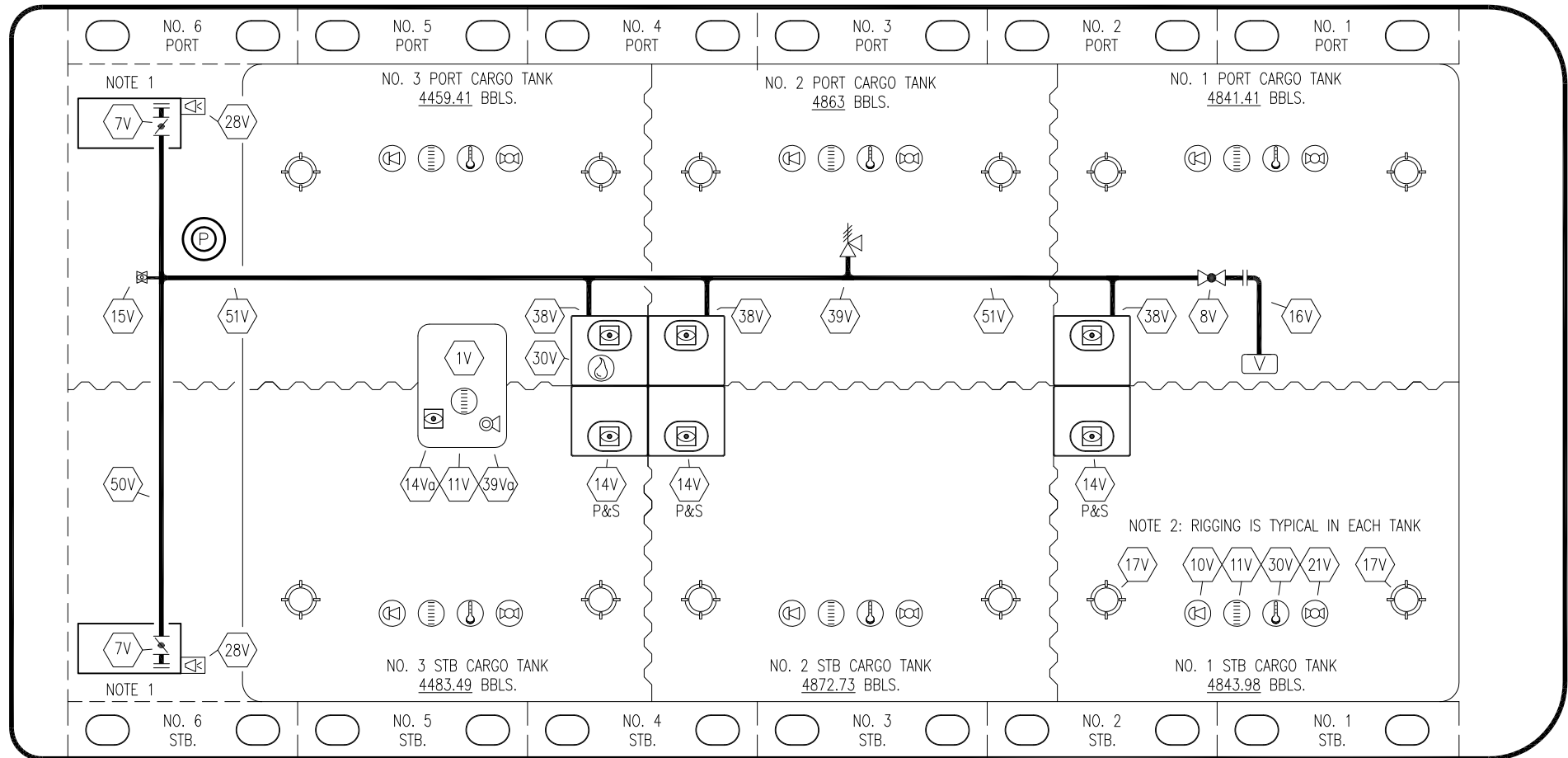
**CARGO
PIPING DIAGRAM**

SCALE: NONE	KIRBY 28721	REV. 1
PAGE: 1 OF 4		

PORT

STERN

BOW



NOTE 2: RIGGING IS TYPICAL IN EACH TANK

NO	DESCRIPTION	NO	DESCRIPTION
1V	3000 GAL. SLOP TANK	21V	2" HERMETIC GAUGE
7V	8" HEADER VALVE	28V	DOCK CONNECTION ALARM
8V	8" VENT STACK VALVE	30V	THERMAL WELL
10V	8" HIGH LEVEL/OVERFILL ALARM	38V	8" VAPOR PENETRATION
11V	8" 1-METER STICK GAUGE	39V	6" PRESSURE/VACUUM VALVE
12V	2" HERMETIC SAMPLE	39Vg	4" PRESSURE/VACUUM VALVE
14V	8" SIGHT GLASS W/GAUGE TREE	50V	8" VAPOR HEADER
14Vg	8" SIGHT GLASS	51V	8" VAPOR PIPELINE
15V	2" INSPECTION PORT	—	ABOVE DECK PIPING
16V	8" VAPOR VENT STACK		
17V	19" BUTTERWORTH		

STARBOARD

NOTE 1: CONTAINMENT P/S
NOTE 2: RIGGING IS TYPICAL IN EACH TANK

TRINITY SHIPYARD

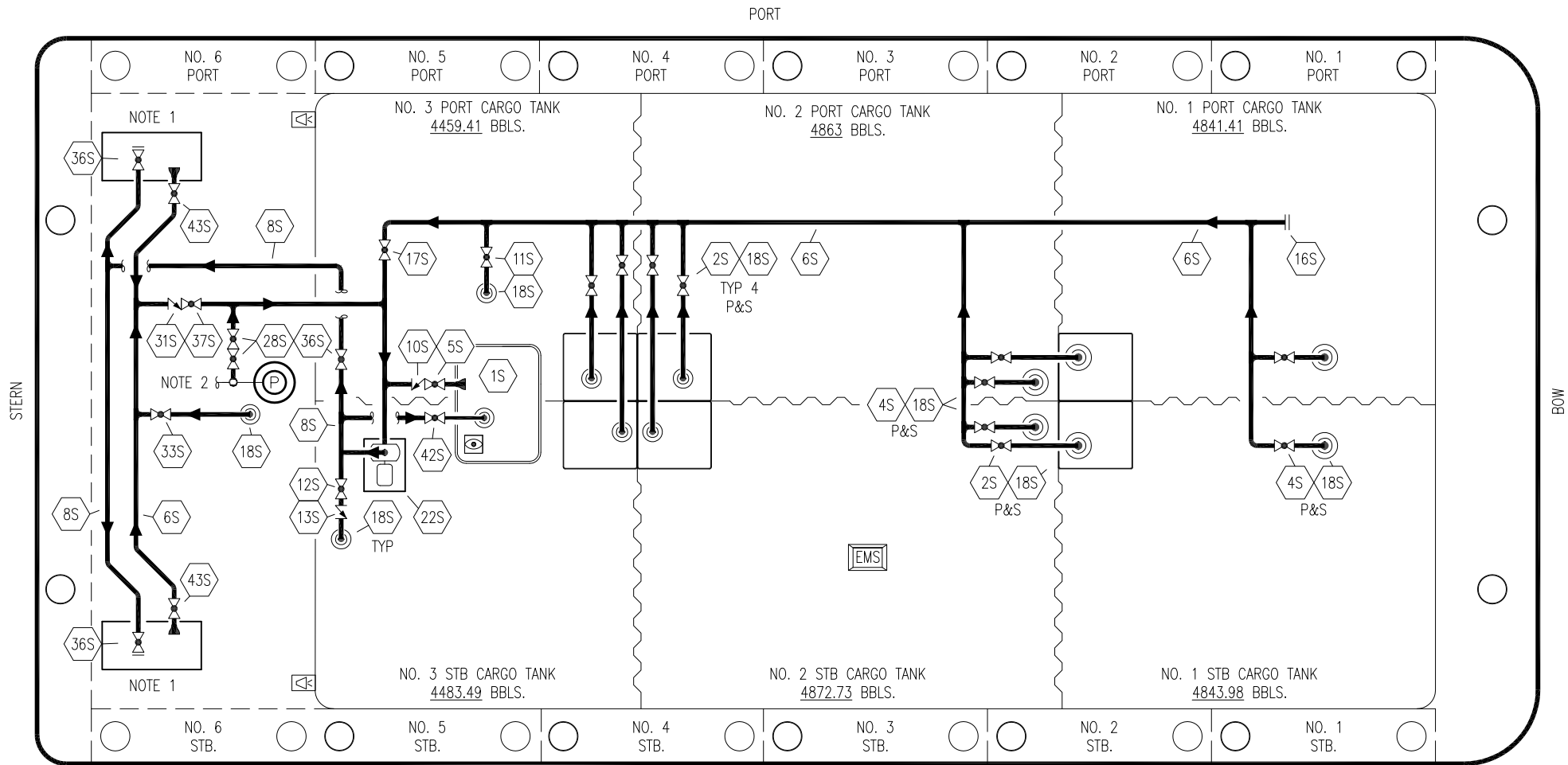
KIRBY INLAND MARINE 

**VAPOR
PIPING DIAGRAM**

REV.	DATE	BY	CHK	APP	REVISION DESCRIPTION
1	03/04/22	MRV	DDA	TL	REVISED PER CLIENT COMMENTS
0	02/01/10	RB	RB	OF	APPROVED

SCALE: NONE
PAGE: 2 OF 4

KIRBY 28721 REV. **1**



NO DESCRIPTION

NO DESCRIPTION

- 1S 3000 GAL. SLOP TANK
- 2S CARGO SUMP SUCTION VALVE
- 4S CARGO TANK SUCTION VALVE
- 5S SLOP TANK SUCTION VALVE
- 6S SUCTION HEADER PIPING
- 8S DISCHARGE HEADER PIPING
- 10S SLOP TANK CHECK VALVE
- 11S LOWER CARGO PIPELINE SUCTION VALVE
- 12S RETURN TO CARGO TANK VALVE
- 13S RETURN TO CARGO CHECK VALVE
- 16S REMOTE SUCTION CONNECTION

- 17S FORWARD CARGO TANK ISOLATION
 - 18S STRIPPING DROP
 - 22S STRIPPING PUMP
 - 28S CARGO PIPING SUCTION
 - 31S CHECK VALVE
 - 33S PUMP WELL SUCTION VALVE
 - 36S STRIPPING PUMP DISCHARGE VALVE
 - 37S BLOCK VALVE
 - 42S SLOP TANK FILL VALVE
 - 43S DRIP PAN SUCTION VALVE
- ABOVE DECK PIPING

NOTE 1: CONTAINMENT P/S
 NOTE 2: CONNECTS TO CARGO PUMP DISCHARGE PIPING.

REV.	DATE	BY	CHK	APP	REVISION DESCRIPTION
1	03/04/22	MRV	DDA	TL	REVISED PER CLIENT COMMENTS
0	02/10/10	RB	RB	OF	APPROVED

TRINITY MARINE

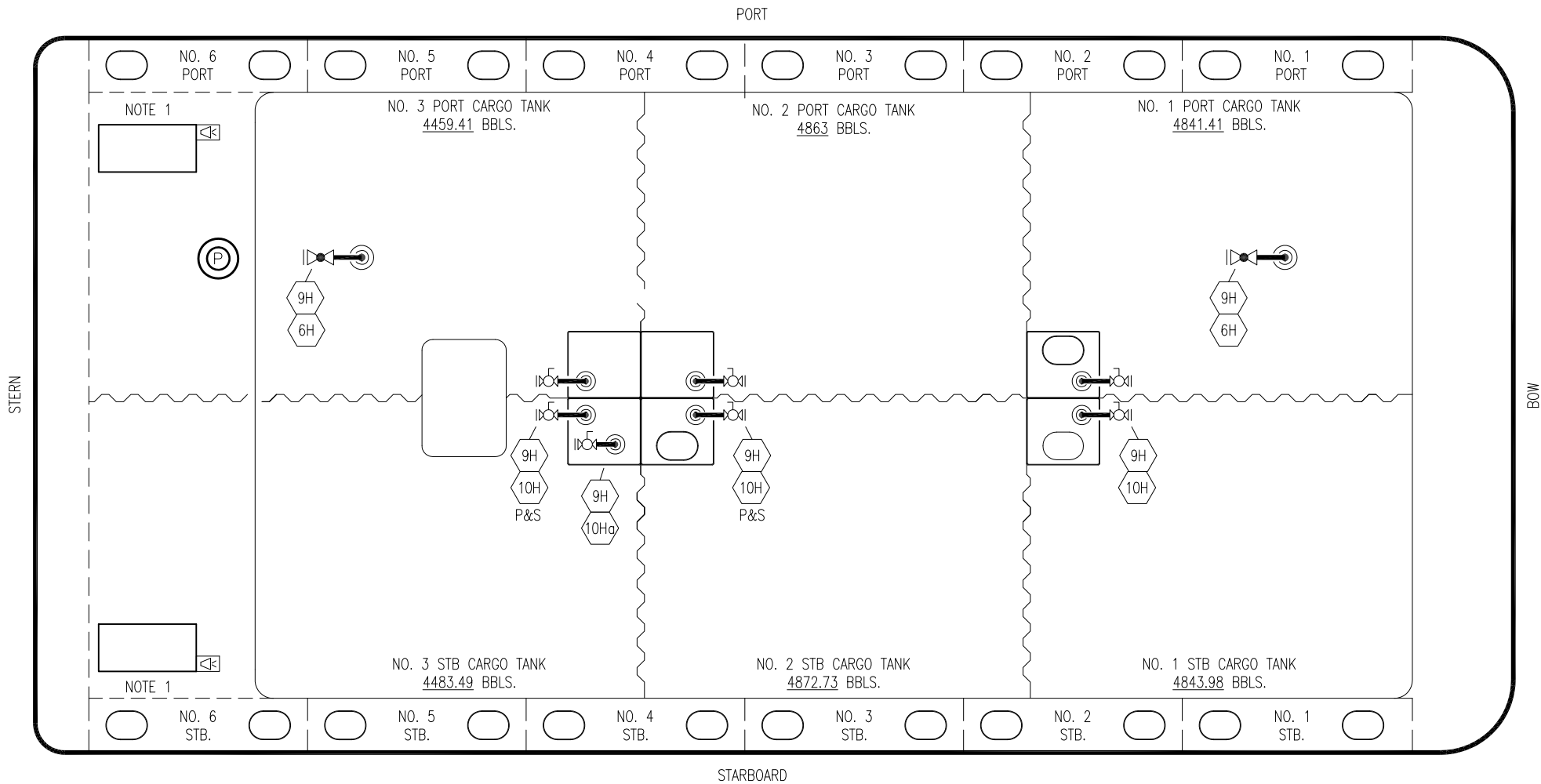
KIRBY INLAND MARINE

**STRIPPING
 PIPING DIAGRAM**

SCALE: NONE
 PAGE: 3 OF 4

KIRBY 28721

REV. 1



- | | |
|------|---------------------------------|
| NO | DESCRIPTION |
| 6H | HEADER VALVE (SHORE CONNECTION) |
| 9H | STEAM DROP |
| 10H | SUPPLY VALVE |
| 10Ho | DEEP WELL SUPPLY VALVE |

NOTE 1: CONTAINMENT P/S

TRINITY MARINE

KIRBY INLAND MARINE					
STEAM PIPING DIAGRAM					
1	03/04/22	MRV	DDA	TL	REVISED PER CLIENT COMMENTS
0	02/01/10	RB	RB	OF	APPROVED
REV.	DATE	BY	CHK	APP	REVISION DESCRIPTION
				SCALE: NONE	KIRBY 28721
				PAGE: 4 OF 4	
					REV. 1