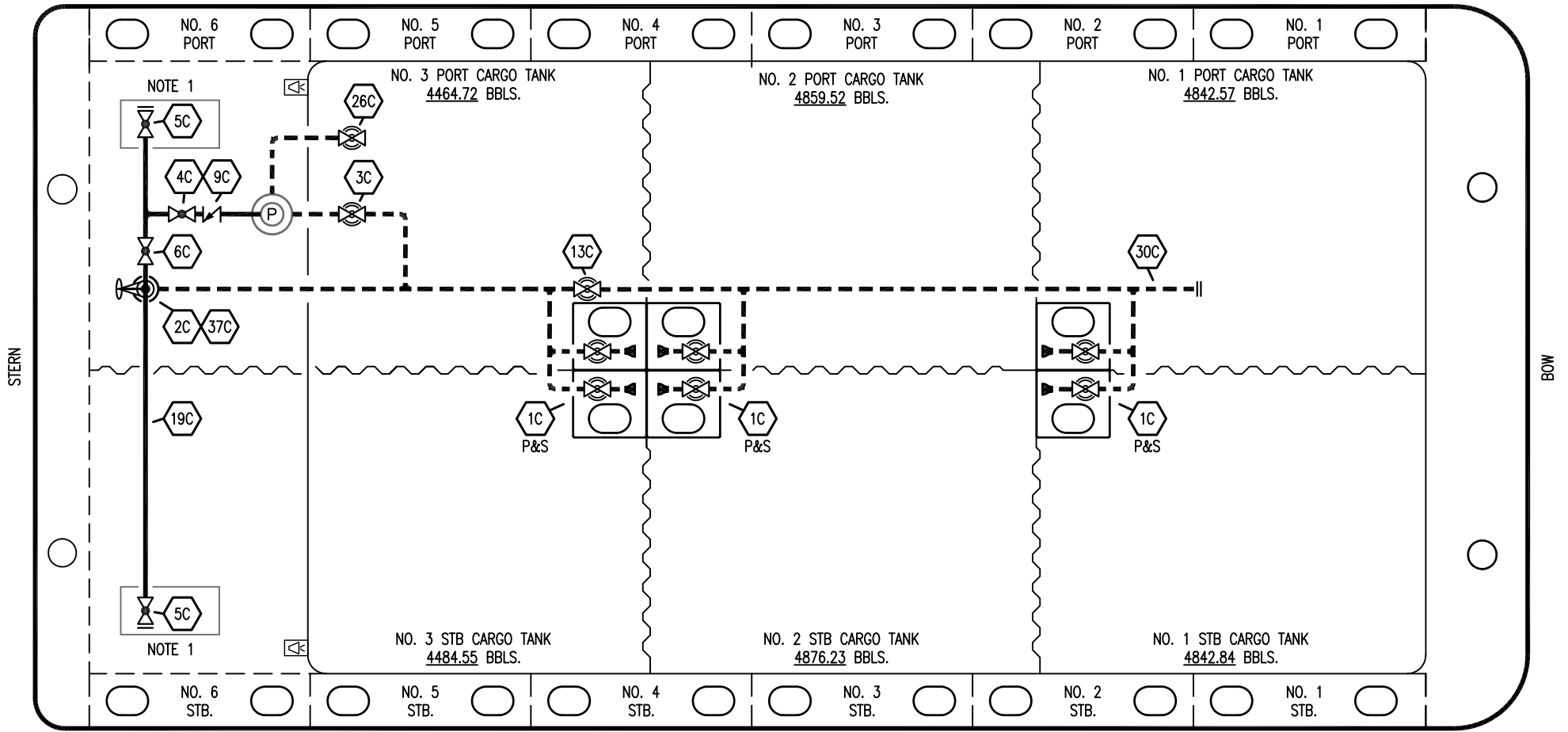


PORT



STERN

BOW

STARBOARD

NO	DESCRIPTION	NO	DESCRIPTION
1C	CARGO TANK VALVE	19C	CARGO HEADER
2C	LOAD VALVE	26C	DRAIN VALVE
3C	MASTER SUCTION VALVE	30C	CARGO PIPELINE
4C	DISCHARGE VALVE	37C	CARGO DROP
5C	HEADER VALVE	—	— ABOVE DECK PIPING
6C	SALVAGE VALVE	---	--- BELOW DECK PIPING
9C	CHECK VALVE		
13C	CARGO PIPING BLOCK VALVE		

NOTE 1: CONTAINMENT P/S

TRINITY MARINE

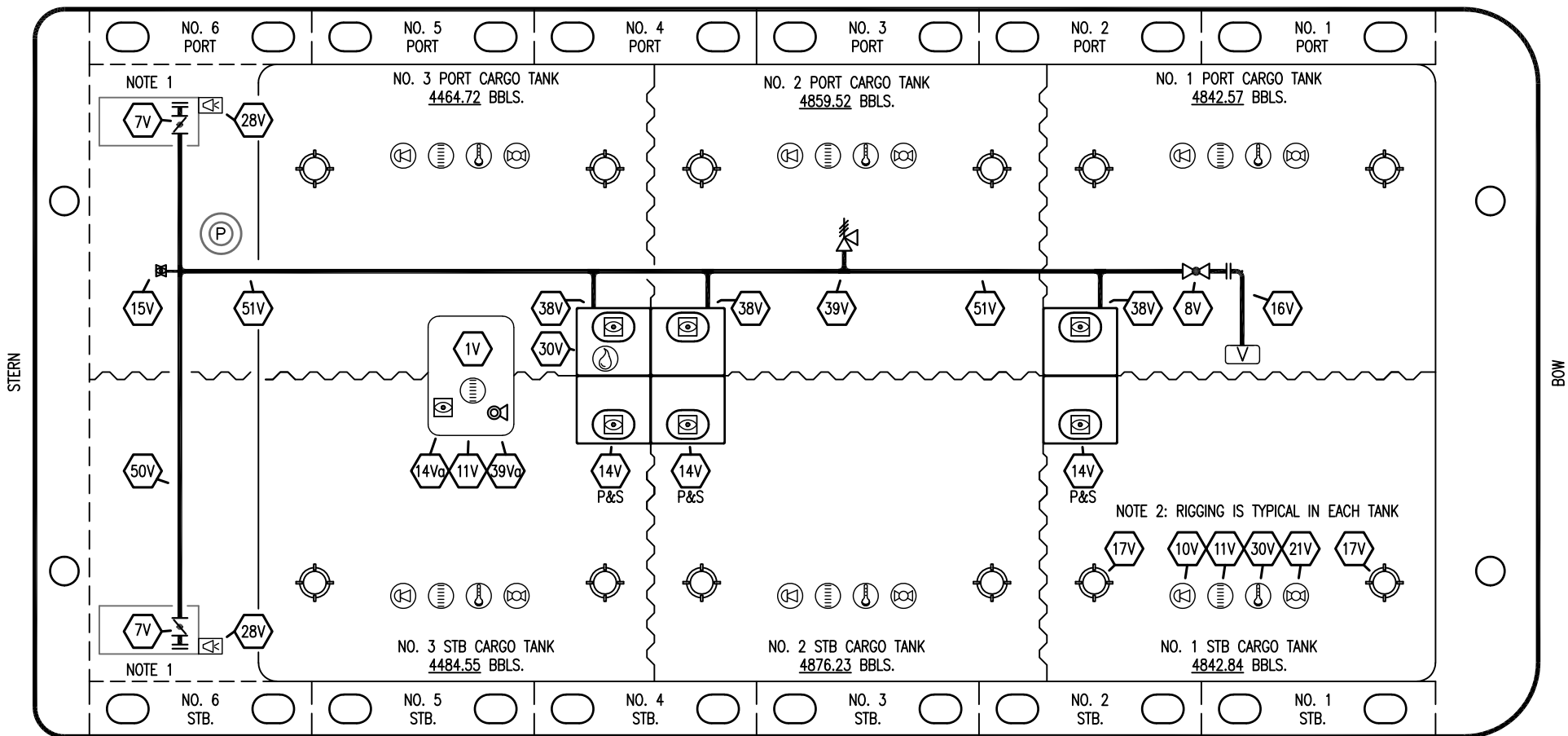
1	01/26/23	MRV	DDA	TFB	REVISED PER CLIENT COMMENTS	
0	02/01/10	RB	RB	OF	APPROVED	
REV.	DATE	BY	CHK	APP	REVISION DESCRIPTION	

KIRBY INLAND MARINE

**CARGO
PIPING DIAGRAM**

SCALE: NONE	KIRBY 28720	REV. 1
PAGE: 1 OF 4		

PORT



STERN

BOW

STARBOARD

NO	DESCRIPTION	NO	DESCRIPTION
1V	3000 GAL. SLOP TANK	21V	2" HERMETIC GAUGE
7V	8" HEADER VALVE	28V	DOCK CONNECTION ALARM
8V	8" VENT STACK VALVE	30V	THERMAL WELL
10V	8" HIGH LEVEL/OVERFILL ALARM	38V	8" VAPOR PENETRATION (P)
11V	8" 1-METER STICK GAUGE	39V	6" PRESSURE/VACUUM VALVE
12V	2" HERMETIC SAMPLE	39Vg	4" PRESSURE/VACUUM VALVE
14V	8" SIGHT GLASS W/GAUGE TREE	50V	8" VAPOR HEADER
14Vg	8" SIGHT GLASS	51V	8" VAPOR PIPELINE
15V	2" INSPECTION PORT	—	ABOVE DECK PIPING
16V	8" VAPOR VENT STACK		
17V	19" BUTTERWORTH		

NOTE 1: CONTAINMENT P/S

NOTE 2: RIGGING IS TYPICAL IN EACH TANK

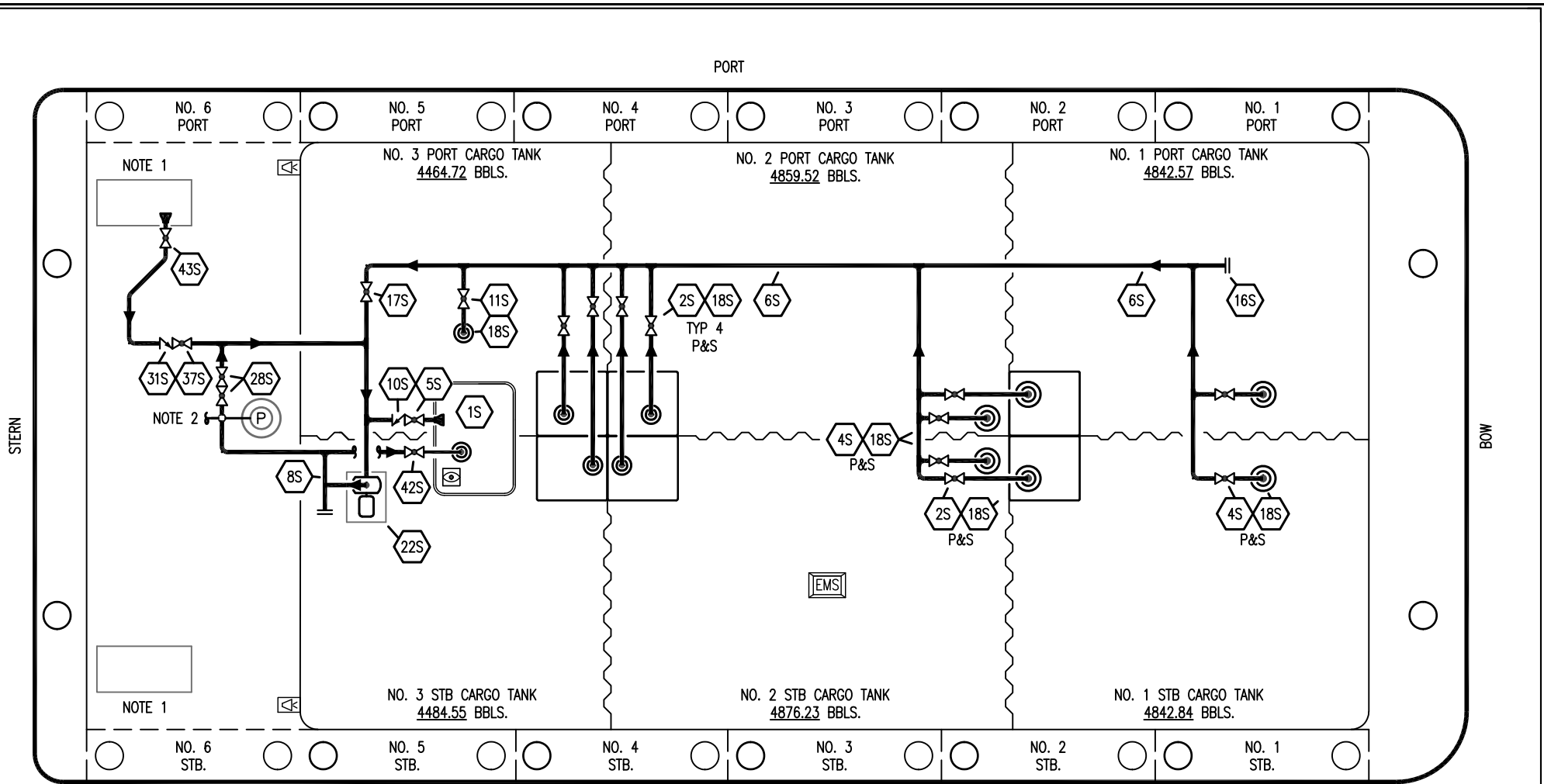
TRINITY MARINE

REV.	DATE	BY	CHK	APP	REVISION DESCRIPTION
1	01/26/23	MRV	DDA	TFB	REVISED PER CLIENT COMMENTS
0	02/01/10	RB	RB	OF	APPROVED

KIRBY INLAND MARINE

VAPOR
PIPING DIAGRAM

SCALE: NONE	KIRBY 28720
PAGE: 2 OF 4	REV. 1



- | | | | |
|-----------|------------------------------------|-----------|------------------------------|
| NO | DESCRIPTION | NO | DESCRIPTION |
| 1S | 3000 GAL. SLOP TANK | 17S | FORWARD CARGO TANK ISOLATION |
| 2S | CARGO SUMP SUCTION VALVE | 18S | STRIPPING DROP |
| 4S | CARGO TANK SUCTION VALVE | 22S | STRIPPING PUMP |
| 5S | SLOP TANK SUCTION VALVE | 28S | CARGO PIPING SUCTION |
| 6S | SUCTION HEADER PIPING | 31S | CHECK VALVE |
| 10S | SLOP TANK CHECK VALVE | 42S | SLOP TANK FILL VALVE |
| 11S | LOWER CARGO PIPELINE SUCTION VALVE | 43S | DRIP PAN SUCTION VALVE |
| 16S | REMOTE SUCTION CONNECTION | — | ABOVE DECK PIPING |

NOTE 1: CONTAINMENT P/S
 NOTE 2: CONNECTS TO CARGO PUMP DISCHARGE PIPING.

TRINITY MARINE

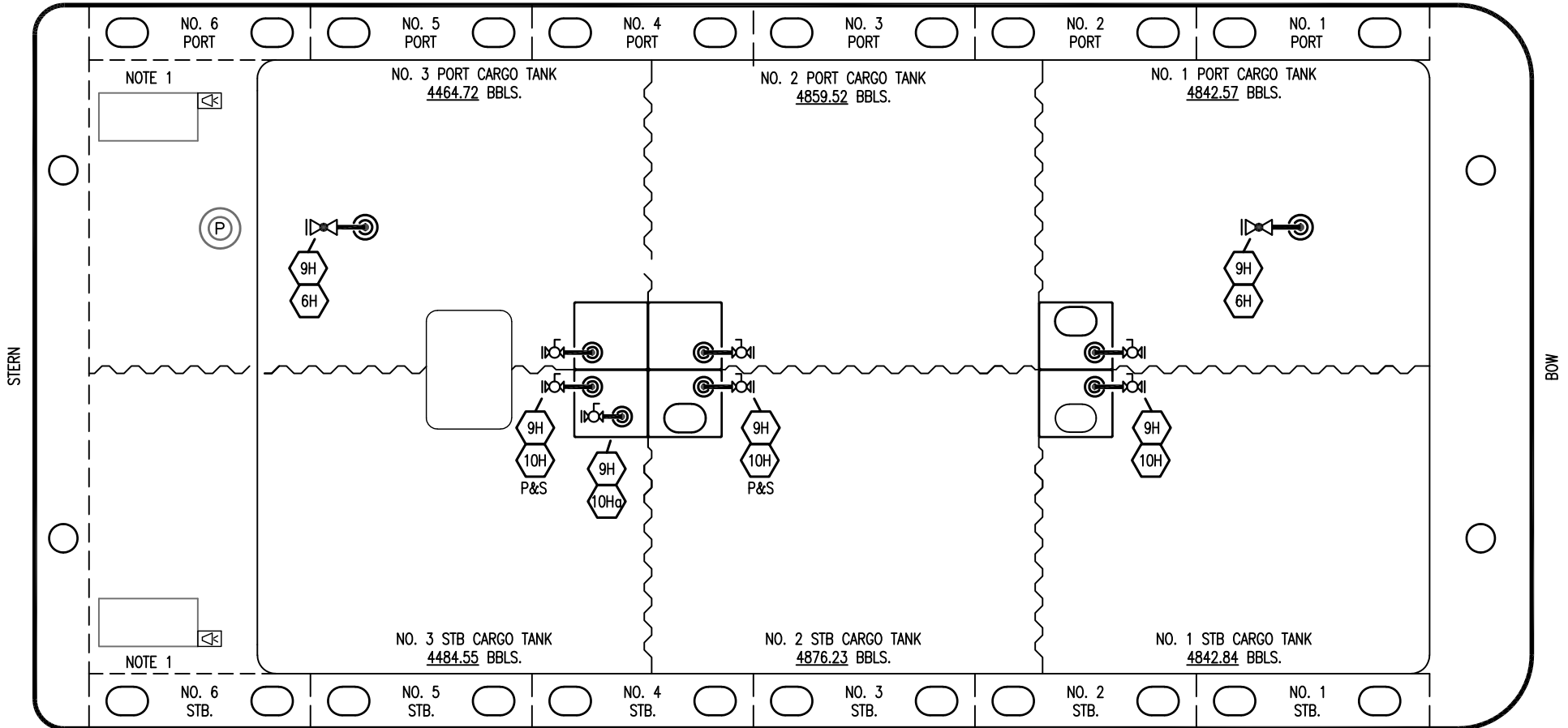
1	01/26/23	MRV	DDA	TFB	REVISED PER CLIENT COMMENTS
0	02/10/10	RB	RB	OF	APPROVED
REV.	DATE	BY	CHK	APP	REVISION DESCRIPTION

KIRBY INLAND MARINE

**STRIPPING
PIPING DIAGRAM**

SCALE: NONE	KIRBY 28720
PAGE: 3 OF 4	REV. 1

PORT



STARBOARD

- | NO | DESCRIPTION |
|------|---------------------------------|
| 6H | HEADER VALVE (SHORE CONNECTION) |
| 9H | STEAM DROP |
| 10H | SUPPLY VALVE |
| 10Hq | DEEP WELL SUPPLY VALVE |

NOTE 1: CONTAINMENT P/S

TRINITY MARINE

1	01/26/23	MRV	DDA	TFB	REVISED PER CLIENT COMMENTS
0	02/01/10	RB	RB	OF	APPROVED
REV.	DATE	BY	CHK	APP	REVISION DESCRIPTION

KIRBY INLAND MARINE 

**STEAM
PIPING DIAGRAM**

SCALE: NONE
PAGE: 4 OF 4

KIRBY 28720

REV. **1**