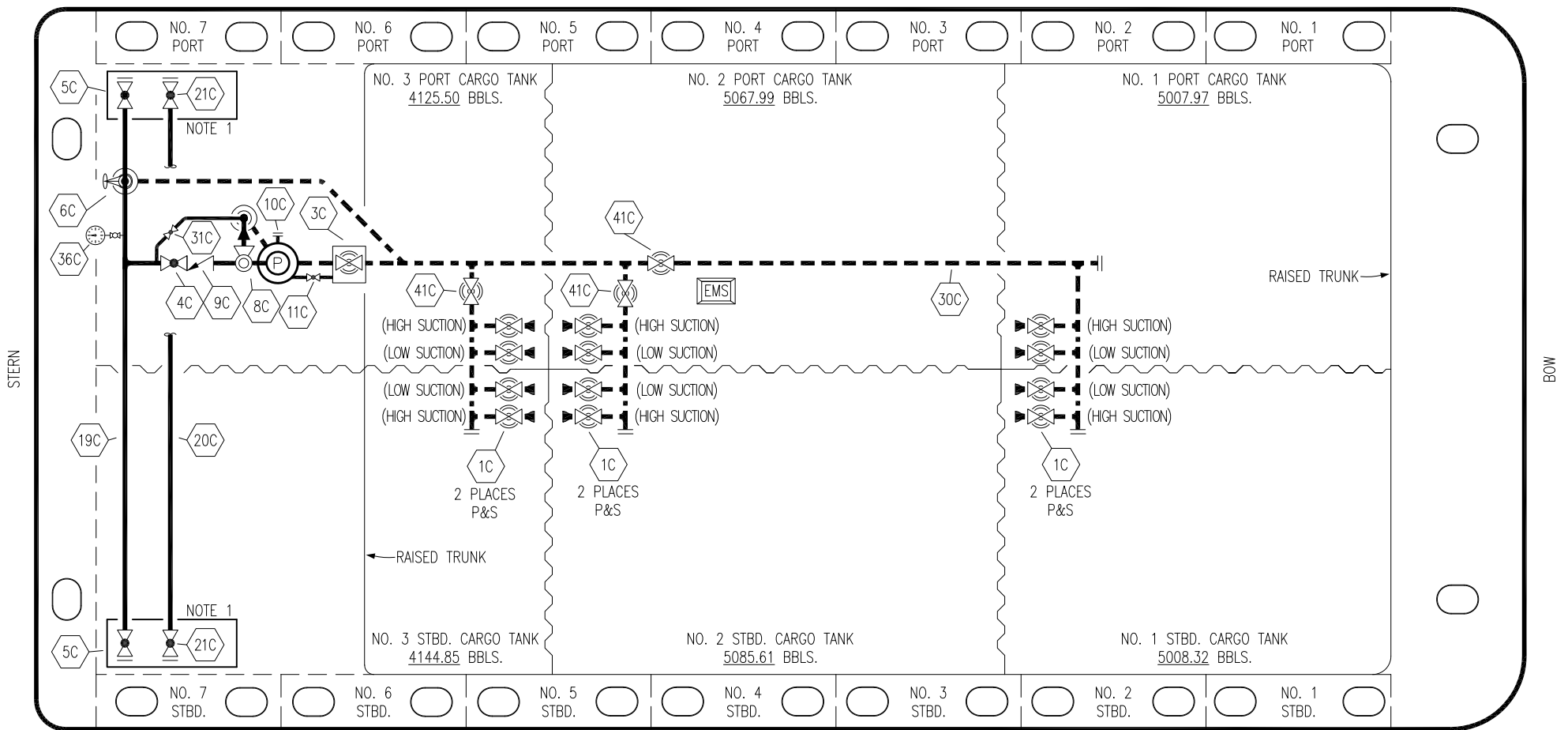


PORT



STERN

BOW

STARBOARD

NO	DESCRIPTION	NO	DESCRIPTION
1C	CARGO TANK VALVE	19C	CARGO HEADER
2C	LOAD VALVE	20C	DUMMY PIPELINE
3C	MASTER SUCTION VALVE	21C	DUMMY HEADER VALVE
4C	DISCHARGE VALVE	30C	CARGO PIPELINE
5C	HEADER VALVE	31C	BYPASS VALVE
6C	SALVAGE VALVE	36C	PRESSURE GAUGE
8C	RELIEF VALVE	37C	CARGO DROP
9C	CHECK VALVE	41C	SUCTION BLOCK VALVE
10C	BURP LINE	—	— ABOVE DECK PIPING
11C	BLEED OFF VALVE	- - -	- - - BELOW DECK PIPING
12C	BURP VALVE RETURN TO CARGO TANK		

NOTE 1: CONTAINMENT P/S

EX: SMS 30035

REV.	DATE	BY	CHK	APP	REVISION DESCRIPTION
0	09/27/22	MRV	DDA	DL	ISSUED FOR APPROVAL

**KIRBY INLAND MARINE**

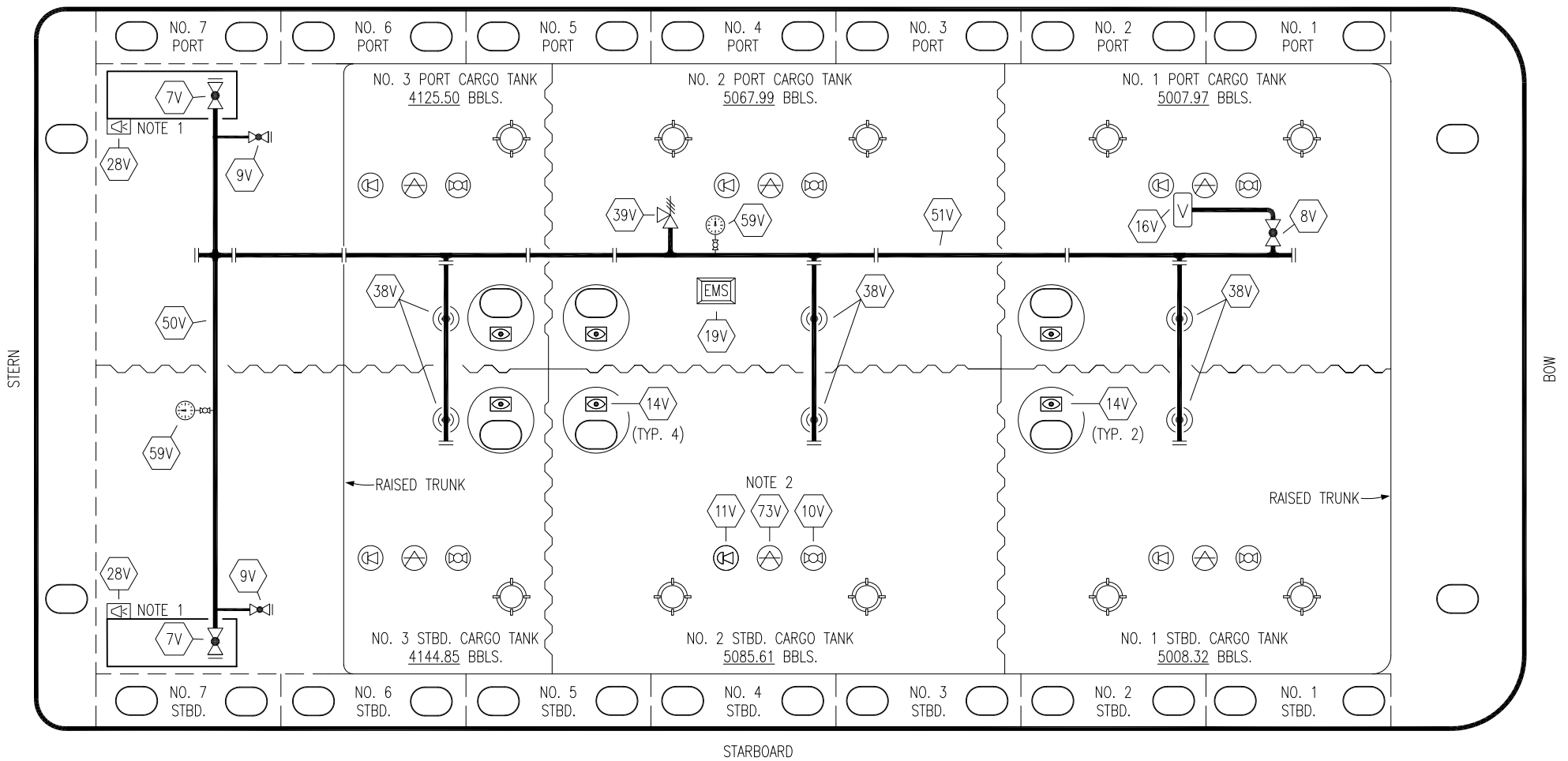
**CARGO**

**PIPING FLOW DIAGRAM**

**KIRBY 28718**

SCALE: NONE	REV. 0
PAGE: 1 OF 2	

PORT




STARBOARD

- |     |                            |          |                          |
|-----|----------------------------|----------|--------------------------|
| NO  | DESCRIPTION                | NO       | DESCRIPTION              |
| 7V  | 8" HEADER VALVE            | 38V      | 8" VAPOR PENETRATION (☉) |
| 8V  | 8" VENT STACK VALVE        | 39V      | PRESSURE/VACUUM VALVE    |
| 9V  | 1" DRAIN VALVE             | 50V      | 8" VAPOR HEADER          |
| 10V | HIGH LEVEL/OVERFILL ALARM  | 51V      | 8" VAPOR PIPELINE        |
| 11V | 1-METER GAUGE STICK        | 59V      | PRESS/VAC GAUGE          |
| 16V | VAPOR VENT STACK           | 73V      | MMC GAUGE POINT          |
| 19V | EMERGENCY ENGINE SHUT DOWN | <b>—</b> | ABOVE DECK PIPING        |
| 28V | DOCK CONNECTION ALARM      |          |                          |

NOTE 2: TYPICAL RIGGING IN EACH TANK  
NOTE 1: CONTAINMENT P/S

EX: SMS 30035

0	09/27/22	MRV	DDA	DL	ISSUED FOR APPROVAL
REV.	DATE	BY	CHK	APP	REVISION DESCRIPTION



**KIRBY INLAND MARINE**

**VAPOR PIPING FLOW DIAGRAM**

**KIRBY 28718**

SCALE: NONE	REV. 0
PAGE: 2 OF 2	