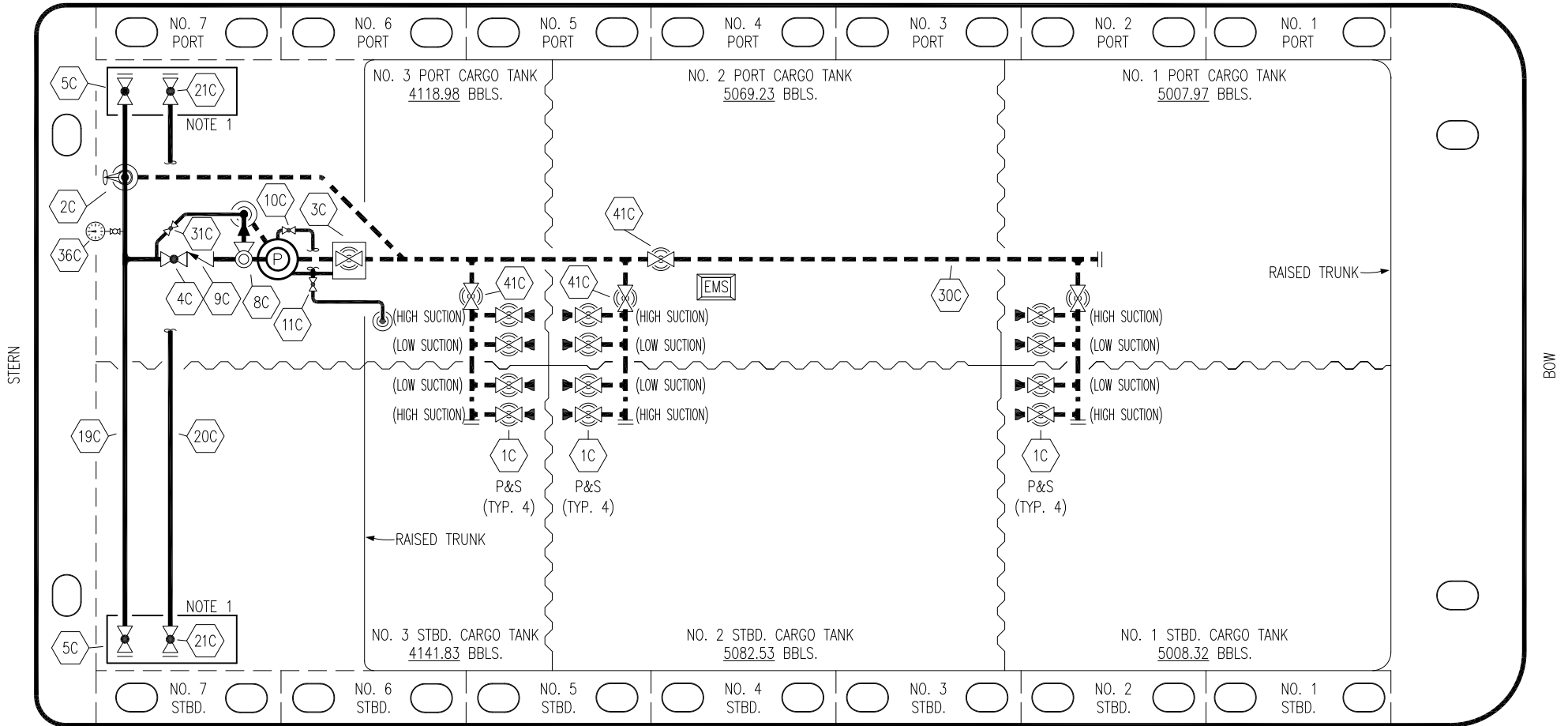


PORT



STARBOARD

- |     |                                 |     |                       |
|-----|---------------------------------|-----|-----------------------|
| NO  | DESCRIPTION                     | NO  | DESCRIPTION           |
| 1C  | CARGO TANK VALVE                | 20C | DUMMY PIPELINE        |
| 2C  | LOAD VALVE                      | 21C | DUMMY HEADER VALVE    |
| 3C  | MASTER SUCTION VALVE            | 30C | CARGO PIPELINE        |
| 4C  | DISCHARGE VALVE                 | 31C | BYPASS VALVE          |
| 5C  | HEADER VALVE                    | 36C | PRESSURE GAUGE        |
| 8C  | RELIEF VALVE                    | 37C | CARGO DROP            |
| 9C  | CHECK VALVE                     | 41C | SUCTION BLOCK VALVE   |
| 10C | BURP VALVE                      | —   | — ABOVE DECK PIPING   |
| 11C | BLEED OFF VALVE                 | --- | --- BELOW DECK PIPING |
| 12C | BURP VALVE RETURN TO CARGO TANK |     |                       |
| 19C | CARGO HEADER                    |     |                       |

NOTE 1: CONTAINMENT P/S

0	09/13/22	MRV	DDA	TB	ISSUED FOR APPROVAL
REV.	DATE	BY	CHK	APP	REVISION DESCRIPTION

KIRBY INLAND MARINE

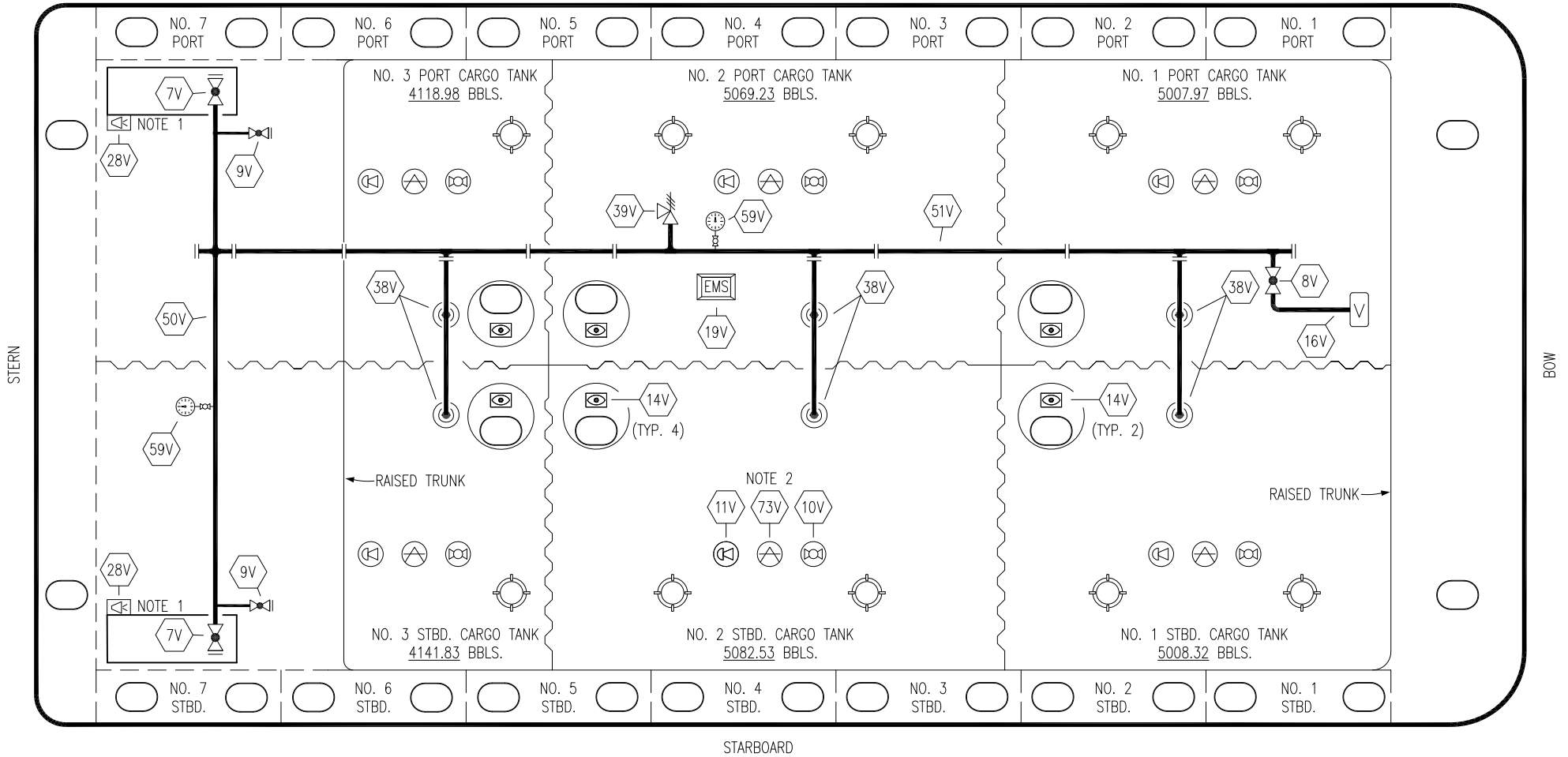
CARGO  
PIPING FLOW DIAGRAM

KIRBY 28716

REV. 0

SCALE: NONE  
PAGE: 1 OF 2

PORT




STARBOARD

- |     |                            |     |                          |
|-----|----------------------------|-----|--------------------------|
| NO  | DESCRIPTION                | NO  | DESCRIPTION              |
| 7V  | 8" HEADER VALVE            | 38V | 8" VAPOR PENETRATION (⊙) |
| 8V  | 8" VENT STACK VALVE        | 39V | PRESSURE/VACUUM VALVE    |
| 9V  | DRAIN VALVE                | 50V | 8" VAPOR HEADER          |
| 10V | HIGH LEVEL/OVERFILL ALARM  | 51V | 8" VAPOR PIPELINE        |
| 11V | 1-METER GAUGE STICK        | 59V | PRESS/VAC GAUGE          |
| 16V | VAPOR VENT STACK           | 73V | MMC GAUGE POINT          |
| 19V | EMERGENCY ENGINE SHUT DOWN | —   | ABOVE DECK PIPING        |
| 28V | DOCK CONNECTION ALARM      |     |                          |

NOTE 2: TYPICAL RIGGING IN EACH TANK

NOTE 1: CONTAINMENT P/S

						<b>KIRBY INLAND MARINE</b> 	
						<b>VAPOR PIPING FLOW DIAGRAM</b>	
0	09/13/22	MRV	DDA	TB	ISSUED FOR APPROVAL	SCALE: NONE	<b>KIRBY 28716</b>
REV.	DATE	BY	CHK	APP	REVISION DESCRIPTION	PAGE: 2 OF 2	

REV. **0**