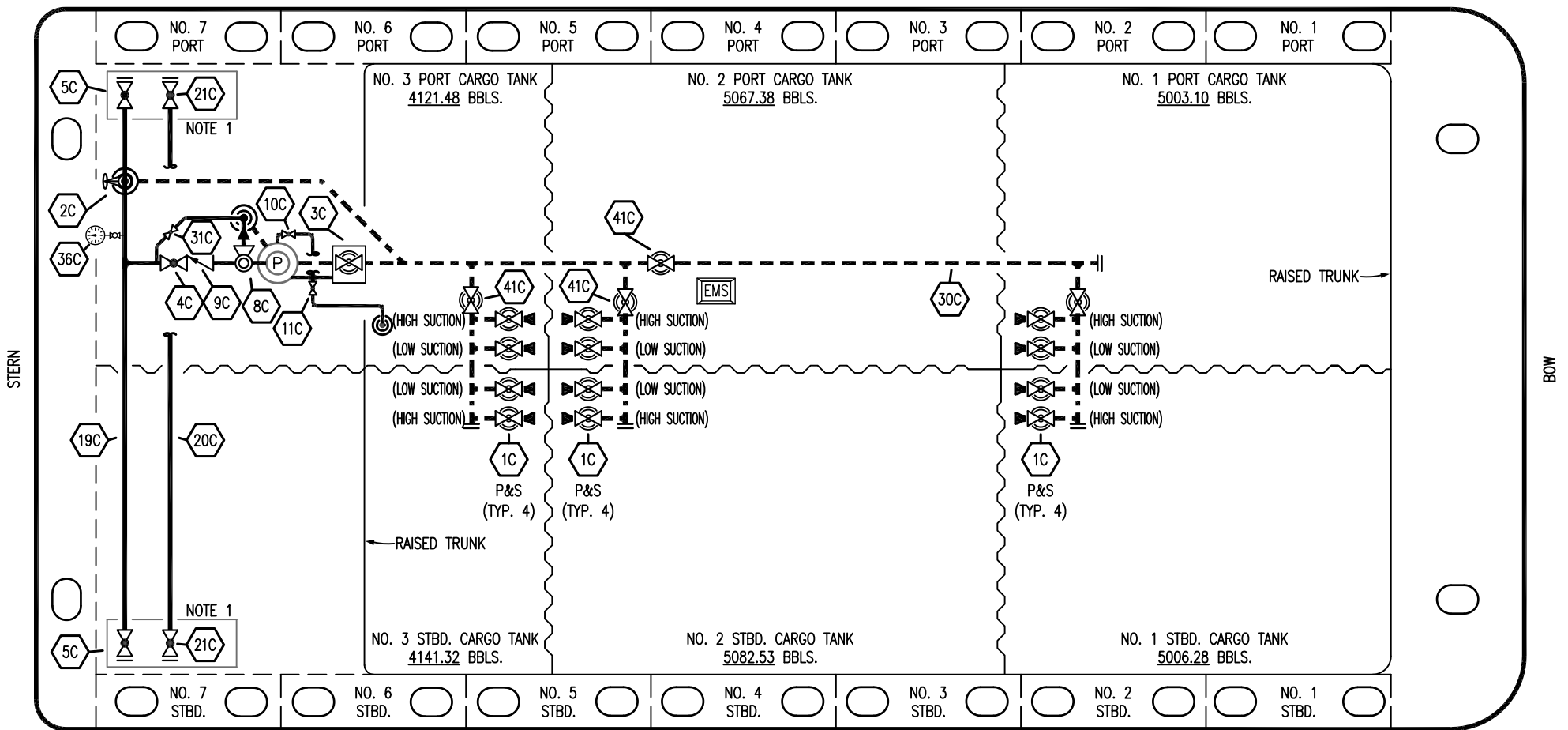


PORT




STARBOARD

NO	DESCRIPTION	NO	DESCRIPTION
1C	CARGO TANK VALVE	20C	DUMMY PIPELINE
2C	LOAD VALVE	21C	DUMMY HEADER VALVE
3C	MASTER SUCTION VALVE	30C	CARGO PIPELINE
4C	DISCHARGE VALVE	31C	BYPASS VALVE
5C	HEADER VALVE	36C	PRESSURE GAUGE
8C	RELIEF VALVE	37C	CARGO DROP
9C	CHECK VALVE	41C	SUCTION BLOCK VALVE
10C	BURP VALVE	—	— ABOVE DECK PIPING
11C	BLEED OFF VALVE	---	--- BELOW DECK PIPING
12C	BURP VALVE RETURN TO CARGO TANK		
19C	CARGO HEADER		

NOTE 1: CONTAINMENT P/S

EX: SMS 30046

REV.	DATE	BY	CHK	APP	REVISION DESCRIPTION
0	05/02/23	MRV	DDA	DC	ISSUED FOR APPROVAL



KIRBY INLAND MARINE

CARGO

PIPING FLOW DIAGRAM

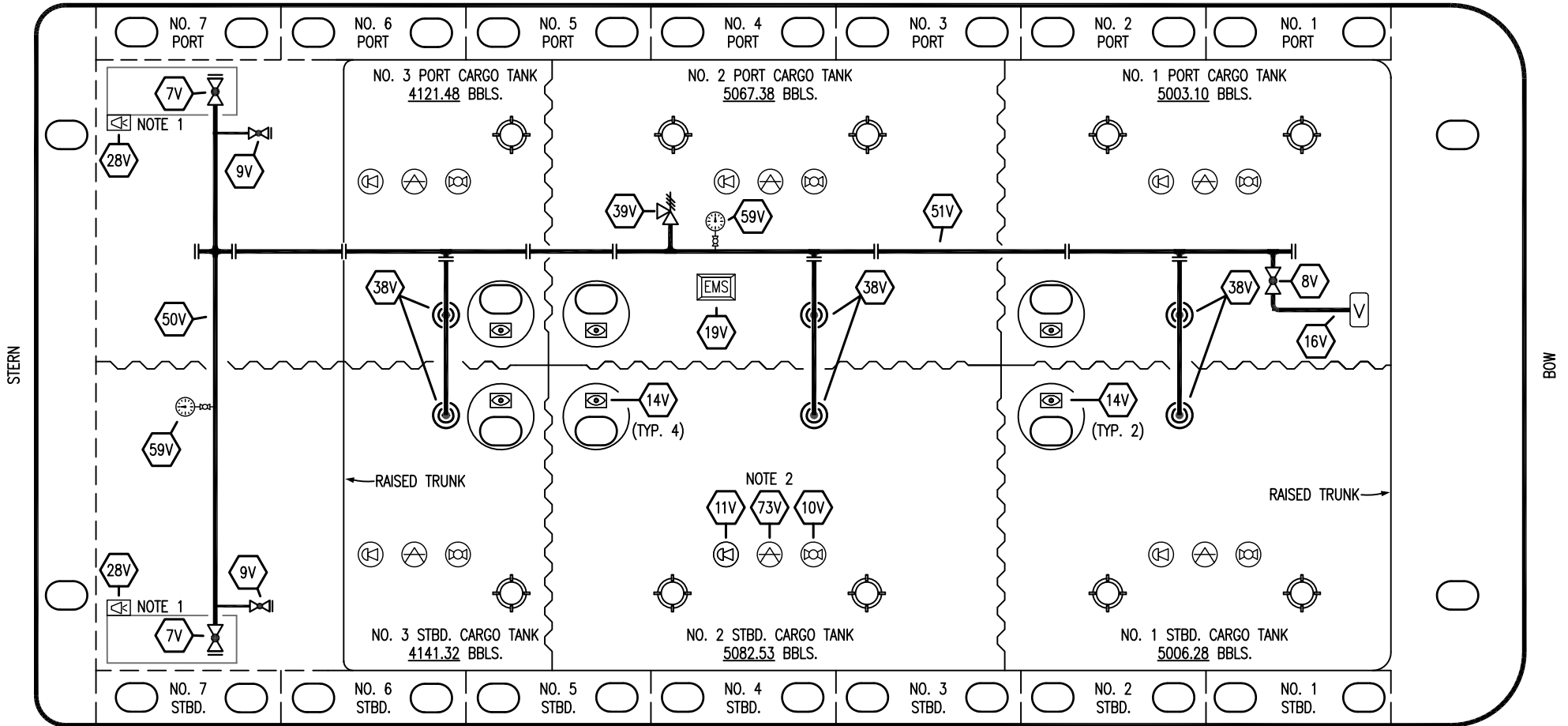
KIRBY 28715

SCALE: NONE

PAGE: 1 OF 3

REV. **0**

PORT



STARBOARD

- | | | | |
|-----|----------------------------|-----|--------------------------|
| NO | DESCRIPTION | NO | DESCRIPTION |
| 7V | 8" HEADER VALVE | 38V | 8" VAPOR PENETRATION (⊙) |
| 8V | 8" VENT STACK VALVE | 39V | PRESSURE/VACUUM VALVE |
| 9V | DRAIN VALVE | 50V | 8" VAPOR HEADER |
| 10V | HIGH LEVEL/OVERFILL ALARM | 51V | 8" VAPOR PIPELINE |
| 11V | 1-METER GAUGE STICK | 59V | PRESS/VAC GAUGE |
| 16V | VAPOR VENT STACK | 73V | MMC GAUGE POINT |
| 19V | EMERGENCY ENGINE SHUT DOWN | — | ABOVE DECK PIPING |
| 28V | DOCK CONNECTION ALARM | | |

NOTE 2: TYPICAL RIGGING IN EACH TANK
NOTE 1: CONTAINMENT P/S

EX: SMS 30046

0	05/02/23	MRV	DDA	DC	ISSUED FOR APPROVAL
REV.	DATE	BY	CHK	APP	REVISION DESCRIPTION

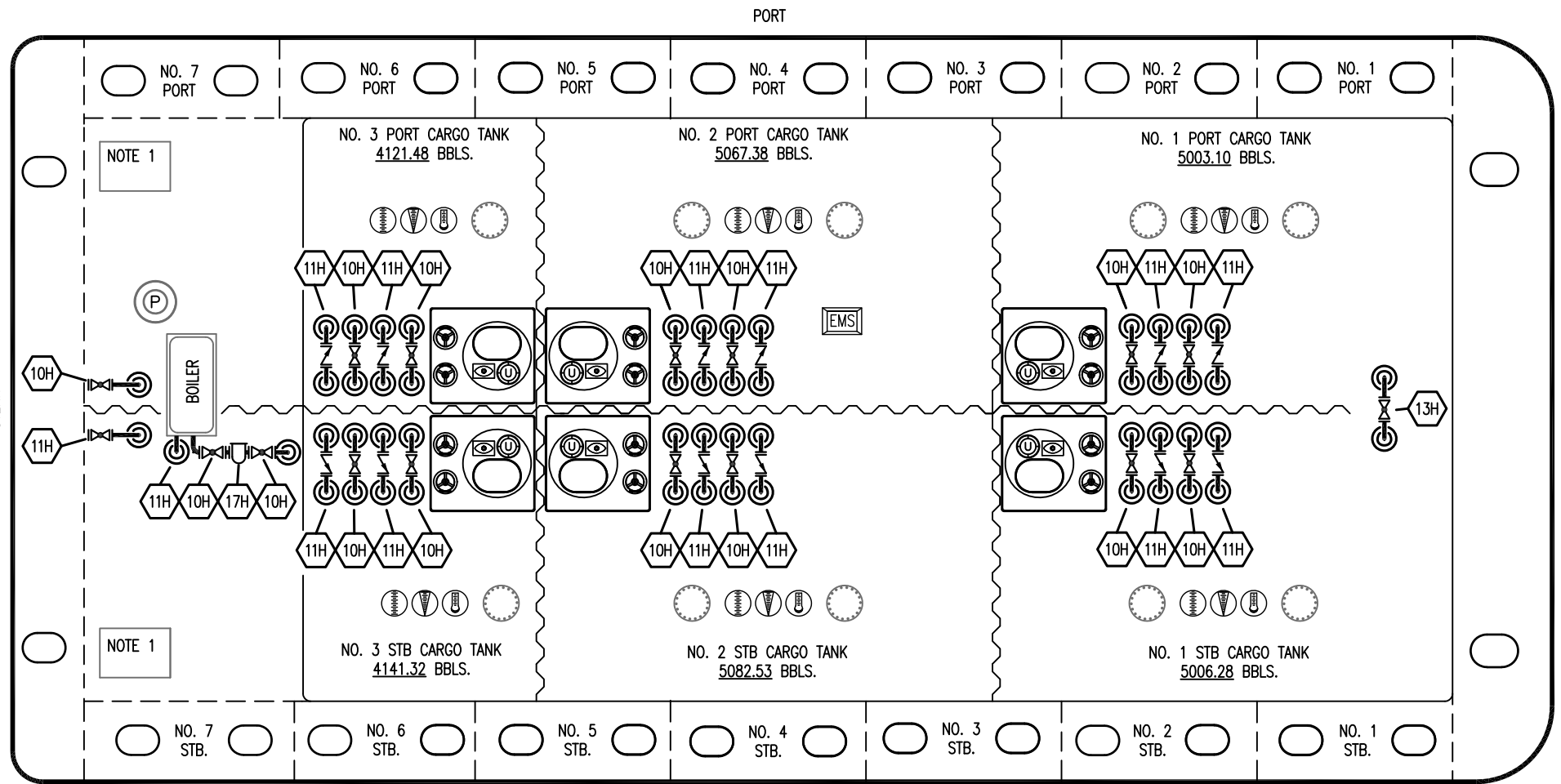
KIRBY INLAND MARINE

**VAPOR
PIPING FLOW DIAGRAM**

KIRBY 28715

SCALE: NONE
PAGE: 2 OF 3

REV. **0**



NOTE 1

NOTE 1

NOTE 1: 6 BARREL DRIP PAN

EX: SMS 30046

- | NO | DESCRIPTION |
|---------------------|--------------------|
| 10H | SUPPLY VALVE |
| 11H | RETURN |
| 12H | PRESSURE REGULATOR |
| 13H | BY-PASS |
| 16H | ISOLATION VALVE |
| 17H | BASKET STRAINER |
| — ABOVE DECK PIPING | |

0	05/02/23	MRV	DDA	DC	ISSUED FOR APPROVAL	
REV.	DATE	BY	CHK	APP	REVISION DESCRIPTION	

<p>KIRBY INLAND MARINE</p>		
<p>HOT OIL PIPING FLOW DIAGRAM</p>		
SCALE: NONE	<p>KIRBY 28715</p>	
PAGE: 3 of 3		
		<p>REV. 0</p>