


NO	SIZE	DESCRIPTION	NO	SIZE	DESCRIPTION
1C	8"	CARGO TANK VALVE	25C	10"x8"	ECCENTRIC REDUCER
2C	8"	LOAD VALVE	27C	4"	DRIP PAN DRAIN VALVE
3C	10"	MASTER SUCTION VALVE	28C	6"	HIGH LOAD VALVE
4C	8"	DISCHARGE VALVE	28V		DOCK CONNECTION ALARM
5C	8"	HEADER VALVE	38Ca		DEEPWELL DRAIN VALVE
8C	6"	RELIEF VALVE	38Cb	1"	PICKLING LINE SUPPLY VALVE
9Ca	8"	CHECK VALVE	---		ABOVE DECK PIPING
9Cb	1"	CHECK VALVE	---		BELOW DECK PIPING
10C		PUMP BURP VALVE			
16C		DISCHARGE PRESSURE GAUGE			
19C	8"	CARGO HEADER			

NOTE 2: 6 BARREL DRIP PAN
 NOTE 3: PICKLING LINE

TRINITY MARINE

REV.	DATE	BY	CHK	APP	REVISION DESCRIPTION
1	06/29/21	MRV	DDA	CW	REVISED PER CLIENT COMMENTS
0	10/12/15	BB	SC		REVISED PER CLIENT COMMENTS
A	10/22/14	DDA	DDA		ISSUED FOR APPROVAL



KIRBY INLAND MARINE

CARGO PIPING FLOW DIAGRAM

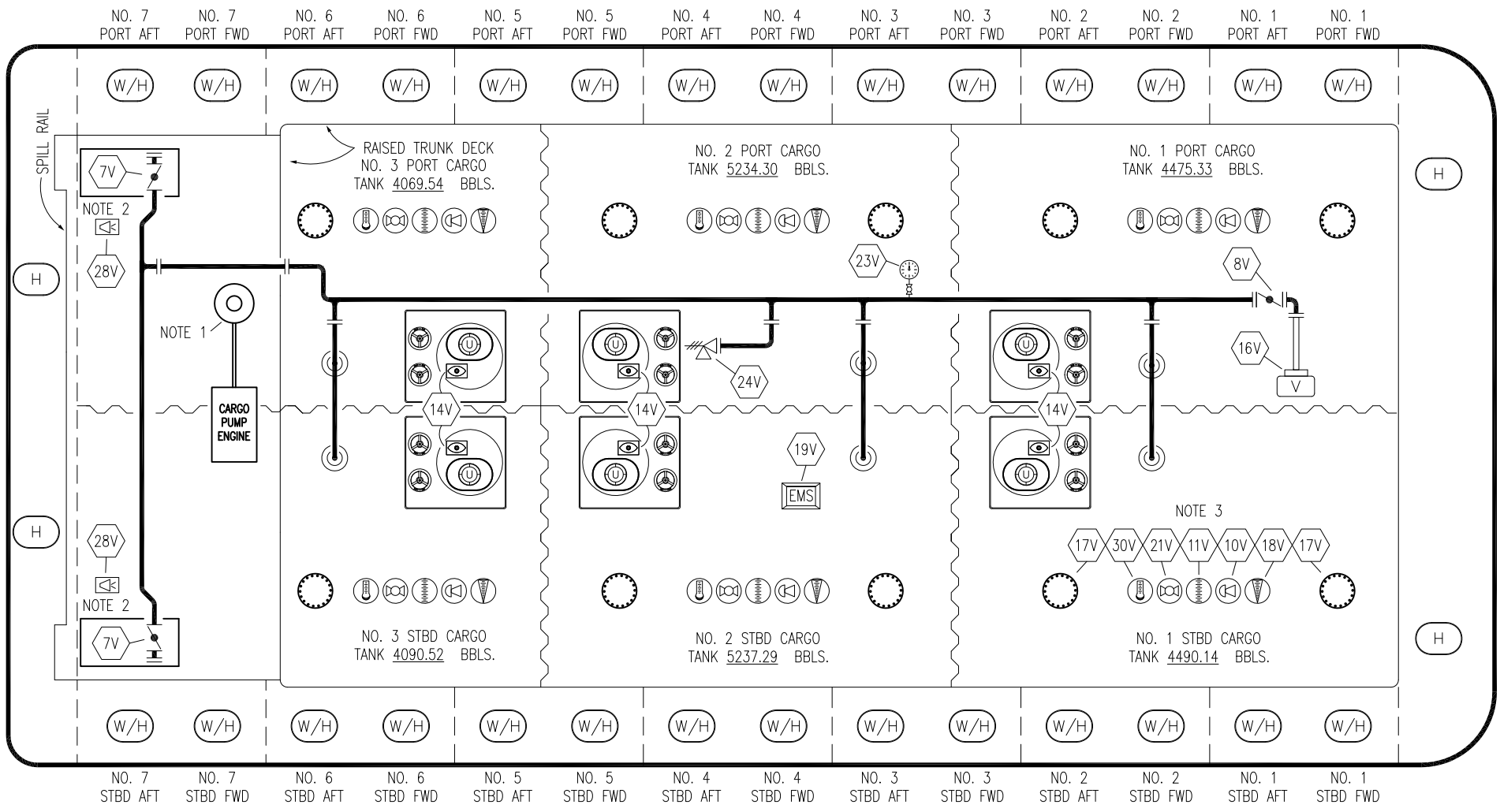
KIRBY 28710

SCALE: NONE
PAGE: 1 OF 3

REV. **1**

STERN

BOW



NO	SIZE	DESCRIPTION	NO	SIZE	DESCRIPTION
7V	8"	HEADER VALVE	21V		HERMETIC GAUGE
8V	8"	VENT STACK VALVE	23V		PRESSURE GAUGE
10V		HIGH LEVEL/OVERFILL ALARM	24V	6"	PRESSURE RELIEF VALVE
11V		GAUGE STICK (LENGTH)	28V		DOCK CONNECTION ALARM
14V		SIGHT GLASS	30V	2"	THERMOWELL WITH BERGAN TEMP DIGITAL READOUT
15V		INSPECTION PORT			— ABOVE DECK PIPING
16V	8"	VAPOR VENT STACK			
17V	19"	BUTTERWORTH			
18V		RESTRICTIVE GAUGE TUBE			
19V		EMERGENCY SHUTDOWN SYSTEM			

NOTE 1: DEEPWELL PUMP
 NOTE 2: 6 BARREL DRIP PAN
 NOTE 3: TYPICAL RIGGING IN EACH TANK

TRINITY MARINE

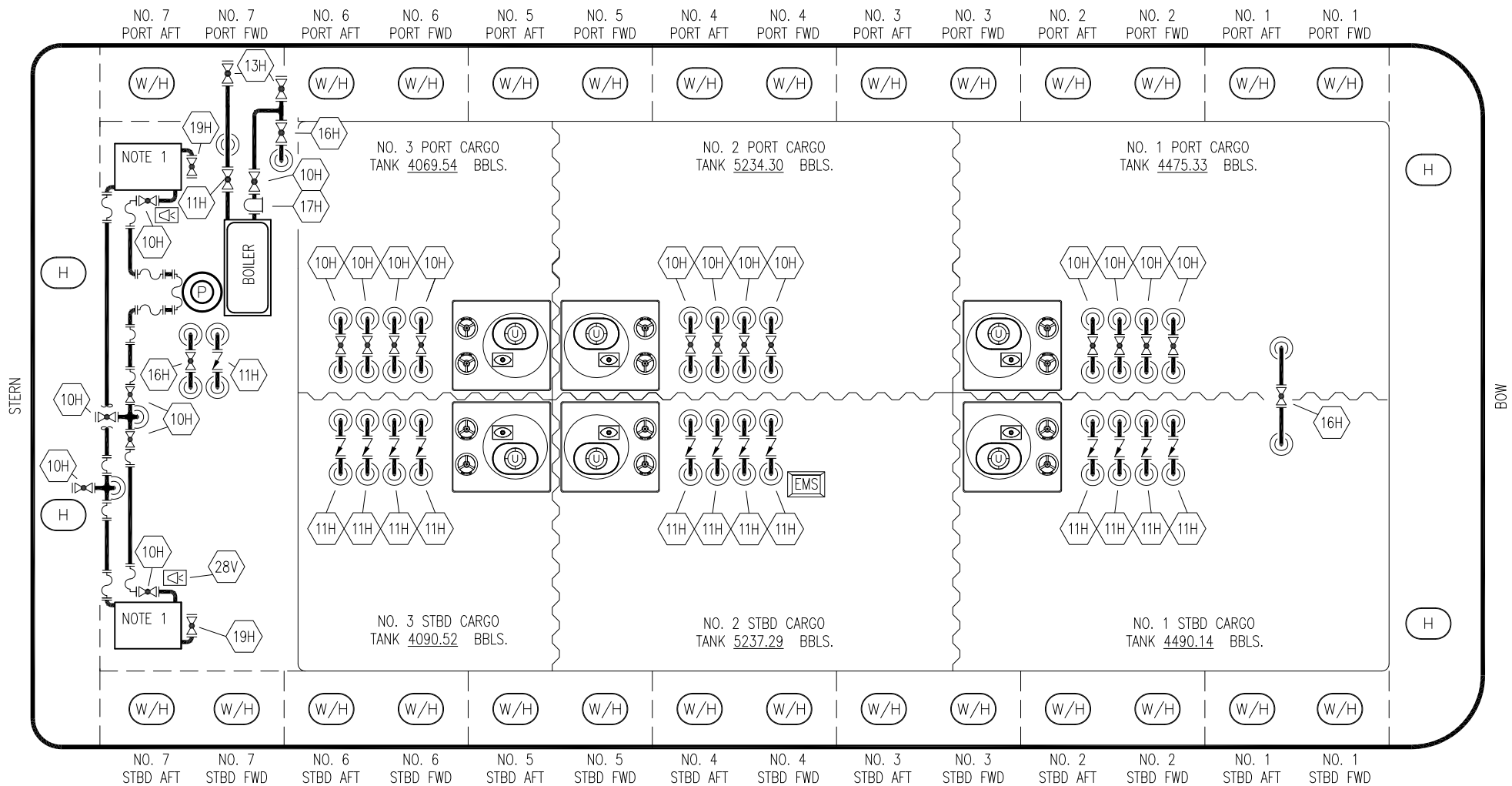
KIRBY INLAND MARINE

VAPOR PIPING FLOW DIAGRAM

REV.	DATE	BY	CHK	APP	REVISION DESCRIPTION
0	06/29/21	MRV	DDA	CW	REVISED PER CLIENT COMMENTS
A	10/22/14	DDA	DDA		ISSUED FOR APPROVAL

SCALE: NONE
 PAGE: 2 OF 3

KIRBY 28710 REV. **0**



- | | | | |
|-----|-----------------------|-------|-------------------|
| NO | DESCRIPTION | NO | DESCRIPTION |
| 10H | SUPPLY VALVE | — | ABOVE DECK PIPING |
| 11H | RETURN (CHECK VALVE) | ~~~~~ | HOSE |
| 13H | OVERBOARD VALVE | | |
| 16H | ISOLATION VALVE | | |
| 17H | BASKET STRAINER | | |
| 18H | CHECK VALVE | | |
| 19H | DRIP PAN DRAIN VALVE | | |
| 28V | DOCK CONNECTION ALARM | | |

NOTE 1: 6 BARREL DRIP PAN

TRINITY MARINE

REV.	DATE	BY	CHK	APP	REVISION DESCRIPTION
1	06/29/21	MRV	DDA	CW	REVISED PER CLIENT COMMENTS
0	10/12/15	BB	SC		REVISED PER CLIENT COMMENTS
A	10/22/14	DDA	DDA		ISSUED FOR APPROVAL

KIRBY INLAND MARINE

HOT OIL
PIPING FLOW DIAGRAM

SCALE: NONE	KIRBY 28710	REV.
PAGE: 3 of 3		1