


NO	DESCRIPTION	NO	DESCRIPTION
1C	CARGO TANK VALVE HIGH SUCTION	13C	CARGO PIPING BLOCK VALVE
1Ca	CARGO TANK VALVE LOW SUCTION	16C	DISCHARGE PRESSURE GAUGE
2C	LOAD VALVE	19C	CARGO HEADER
3C	MASTER SUCTION VALVE	26C	DRAIN VALVE
4C	DISCHARGE VALVE	30C	CARGO PIPELINE
5C	HEADER VALVE	37C	CARGO DROP
6C	SALVAGE VALVE		— ABOVE DECK PIPING
8C	RELIEF VALVE		- - - BELOW DECK PIPING
9C	CHECK VALVE		
11C	BLEED OFF VALVE		

NOTE 1: CONTAINMENT P/S

WEST GULF MARINE -- EX: N/A

REV.	DATE	BY	CHK	APP	REVISION DESCRIPTION
1	10/27/20	DLW	DDA	DR	REVISED PER CLIENT COMMENTS
0	02/22/10	RB	RB	OF	APPROVED



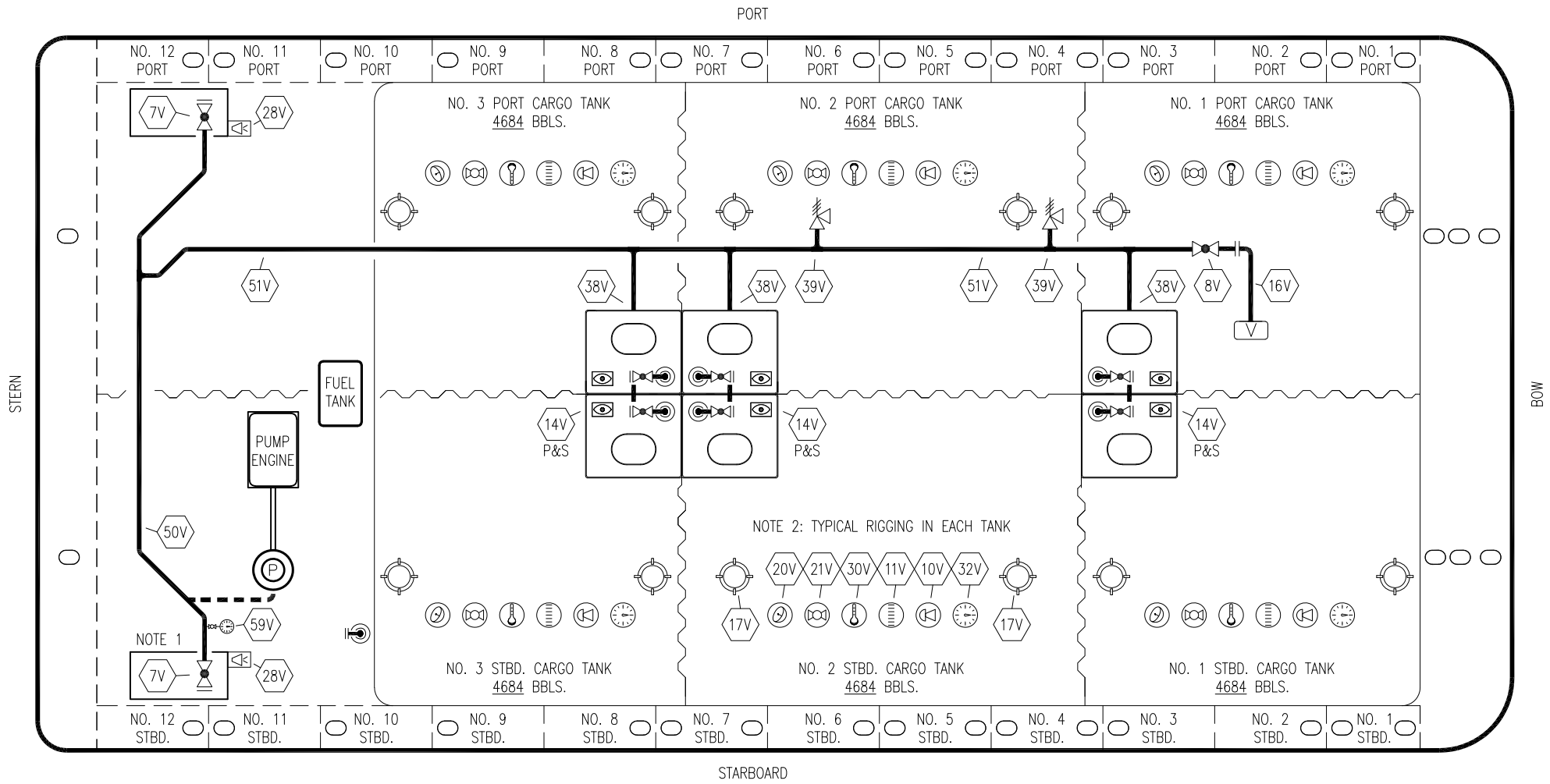
KIRBY INLAND MARINE

CARGO

PIPING FLOW DIAGRAM

KIRBY 28600

SCALE: NONE	REV. 1
PAGE: 1 OF 3	



NO	DESCRIPTION	NO	DESCRIPTION
7V	8" HEADER VALVE	28V	DOCK CONNECTION ALARM
8V	8" VENT STACK VALVE	30V	THERMAL WELL
10V	HIGH LEVEL/OVERFILL ALARM	32V	TEMPERATURE GAUGE
11V	GAUGE STICK	38V	8" VAPOR PENETRATION
14V	SIGHT GLASS	39V	PRESSURE/VACUUM VALVE
17V	BUTTERWORTH	50V	8" VAPOR HEADER
16V	8" VAPOR VENT STACK	51V	8" VAPOR PIPELINE
20V	RADAR GAUGING	59V	PRESS/VAC GAUGE
21V	HERMETIC GAUGE	—	ABOVE DECK PIPING

NOTE 1: CONTAINMENT P&S
 NOTE 2: TYPICAL RIGGING IN EACH TANK

WEST GULF MARINE -- EX: N/A

REV.	DATE	BY	CHK	APP	REVISION DESCRIPTION
2	10/27/20	DLW	DDA	DR	REVISED PER CLIENT COMMENTS
1	08/26/10	RB	OF	OF	ADD RADAR GAUGING
0	02/22/10	RB	RB	OF	APPROVED

KIRBY INLAND MARINE

VAPOR

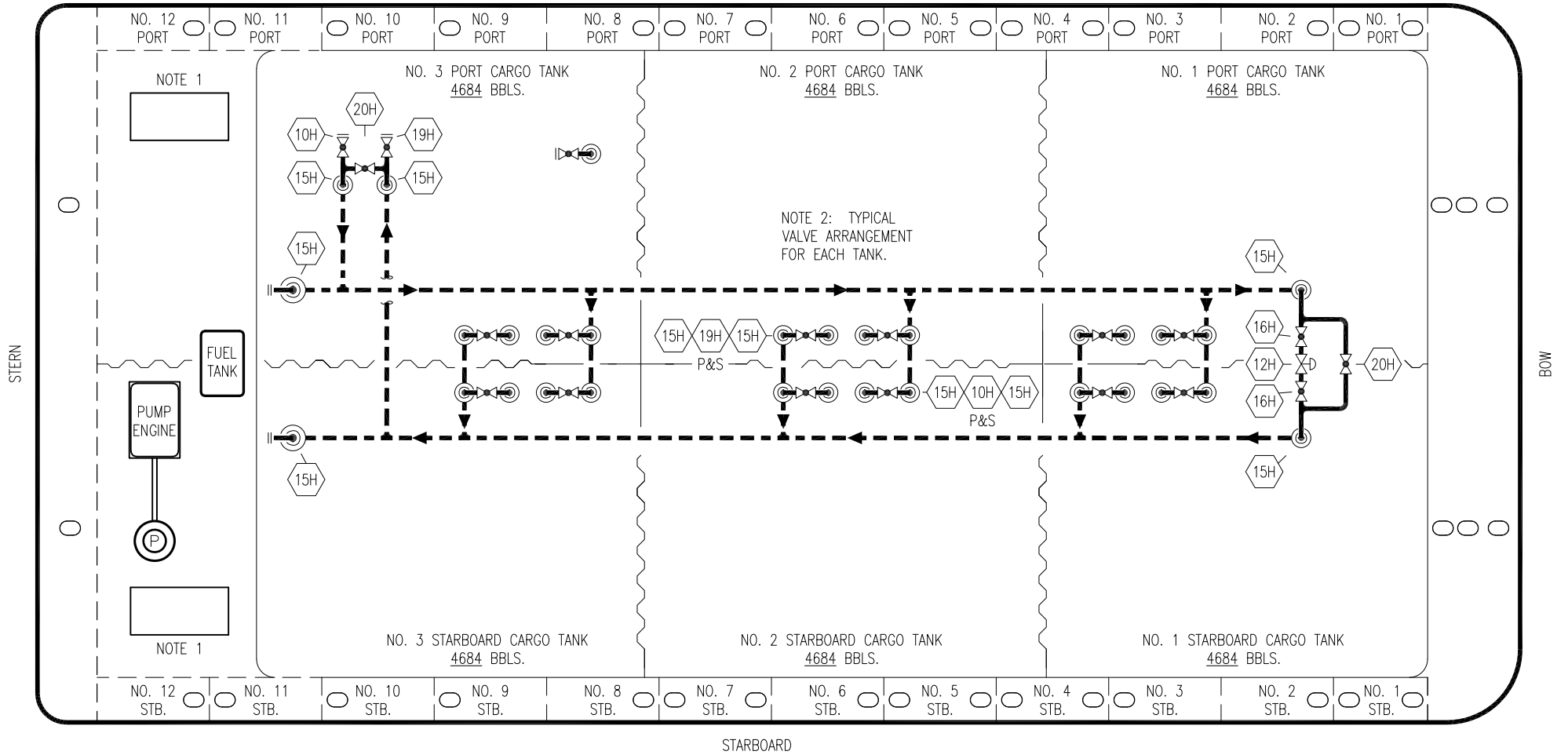
PIPING FLOW DIAGRAM

KIRBY 28600

REV. 2

SCALE: NONE
PAGE: 2 OF 3

PORT



STERN

BOW

STARBOARD

- NO DESCRIPTION
- 10H SUPPLY VALVE
- 12H PRESSURE REGULATOR
- 15H HOT OIL DROP
- 16H ISOLATION VALVE
- 19H RETURN VALVE
- 20H BYPASS VALVE
- ABOVE DECK PIPING

NOTE 1: CONTAINMENT P/S

NOTE 2: TYPICAL VALVE ARRANGEMENT FOR EACH TANK.

WEST GULF MARINE – EX: N/A

0	02/22/10	RB	RB	OF	APPROVED	
REV.	DATE	BY	CHK	APP	REVISION DESCRIPTION	

KIRBY INLAND MARINE 

**HOT OIL
PIPING FLOW DIAGRAM**

SCALE: NONE
PAGE: 3 OF 3

KIRBY 28600

REV. **0**