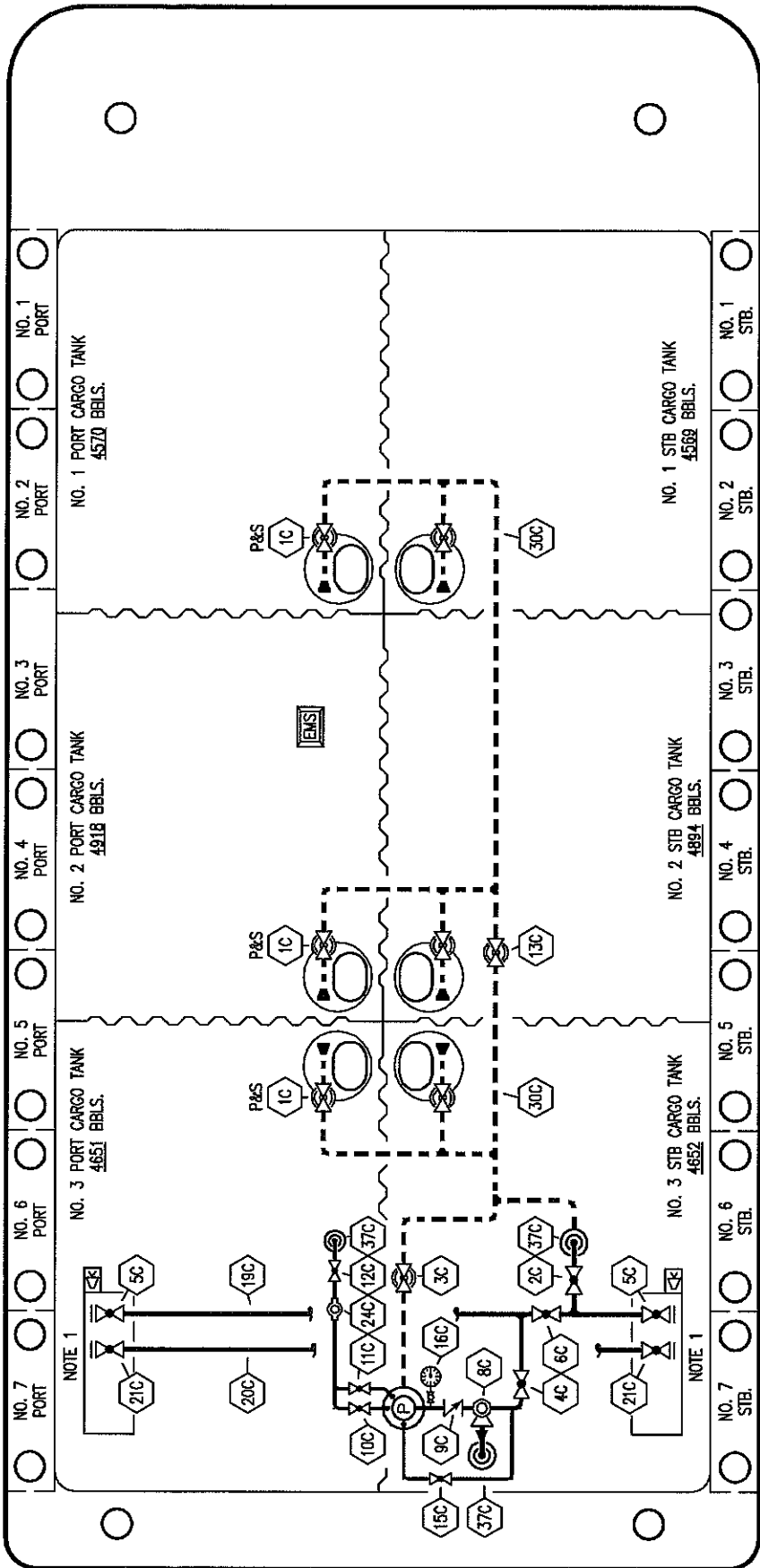


BOW

PORT



STERN

JEFFBOAT - EX: DXE 2913



KIRBY INLAND MARINE

CARGO

PIPING FLOW DIAGRAM

REV. **0**

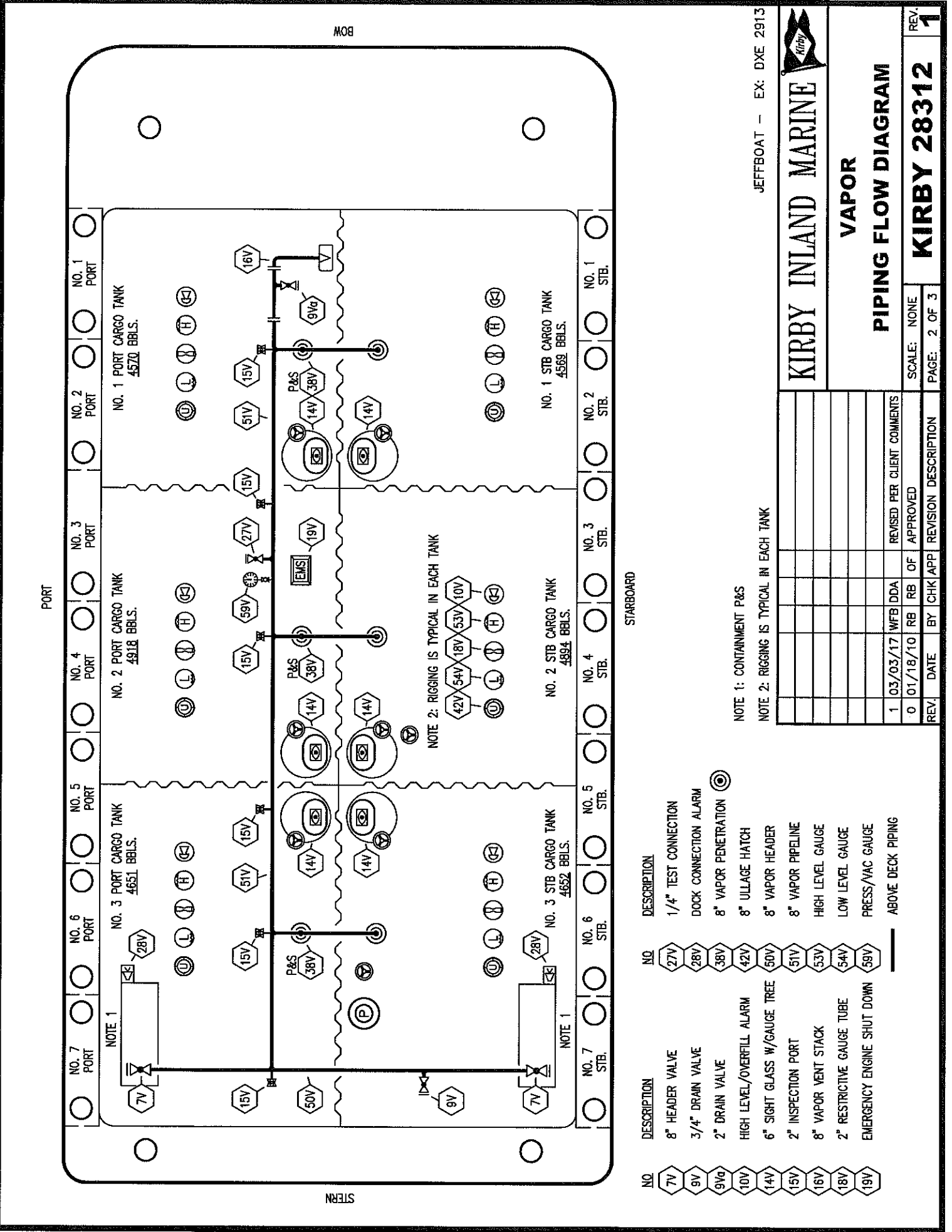
SCALE: NONE
PAGE: 1 OF 3

STARBOARD

NO	DESCRIPTION	NO	DESCRIPTION
1C	CARGO TANK VALVE	13C	CARGO PIPING BLOCK VALVE
2C	LOAD VALVE	15C	BYPASS VALVE AROUND CHECK
3C	MASTER SUCTION VALVE	16C	DISCHARGE PRESSURE GAUGE
4C	DISCHARGE VALVE	19C	CARGO HEADER
5C	HEADER VALVE	20C	DUMMY HEADER PIPING
6C	SALVAGE VALVE	21C	DUMMY HEADER VALVE
8C	RELIEF VALVE	24C	PIPE SIGHT GLASS
9C	CHECK VALVE	30C	CARGO PIPELINE
10C	BURP VALVE	37C	CARGO DROP
11C	BLEED OFF VALVE		ABOVE DECK PIPING
12C	BURP VALVE RETURN TO CARGO TANK		BELOW DECK PIPING

NOTE 1: CONTAINMENT P&S

REV.	DATE	BY	CHK	APP	REVISION DESCRIPTION
0	01/18/10	RB	RB	OF	APPROVED



JEFFBOAT - EX: DXE 2913

KIRBY INLAND MARINE

VAPOR PIPING FLOW DIAGRAM

KIRBY 28312

REV. 1

NOTE 1: CONTAINMENT P&S
 NOTE 2: RIGGING IS TYPICAL IN EACH TANK

STARBOARD

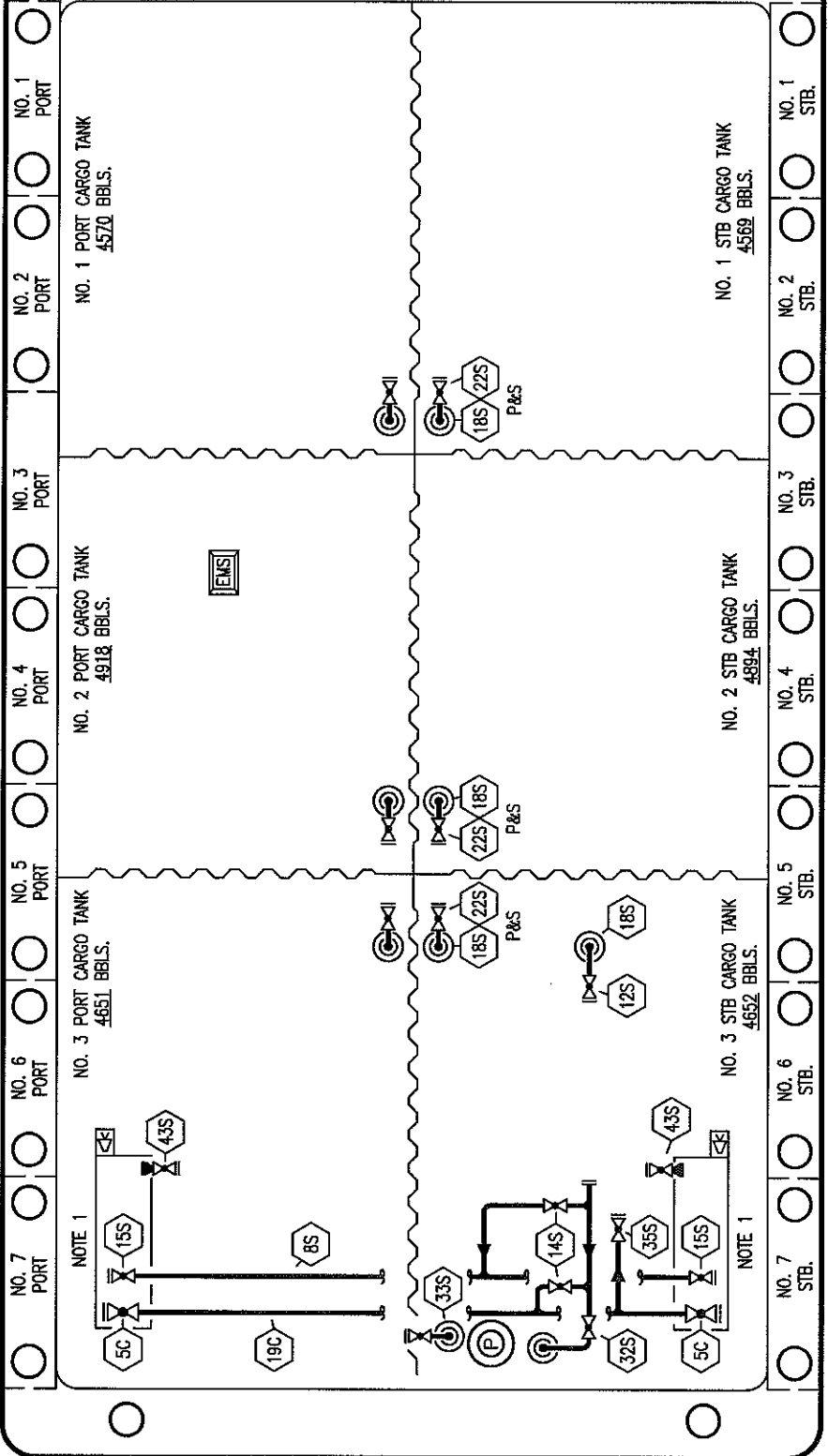
NO.	DESCRIPTION	NO.	DESCRIPTION
7V	8" HEADER VALVE	27V	1/4" TEST CONNECTION
9V	3/4" DRAIN VALVE	28V	DOCK CONNECTION ALARM
9Vg	2" DRAIN VALVE	38V	8" VAPOR PENETRATION
10V	HIGH LEVEL/OVERFILL ALARM	42V	8" ULLAGE HATCH
14V	6" SIGHT GLASS W/GAUGE TREE	50V	8" VAPOR HEADER
15V	2" INSPECTION PORT	51V	8" VAPOR PIPELINE
16V	8" VAPOR VENT STACK	53V	HIGH LEVEL GAUGE
18V	2" RESTRICTIVE GAUGE TUBE	54V	LOW LEVEL GAUGE
19V	EMERGENCY ENGINE SHUT DOWN	59V	PRESS/VAC GAUGE
			ABOVE DECK PIPING

REV.	DATE	BY	CHK	APP	REVISION	DESCRIPTION
1	03/03/17	WFB	DDA			REVISED PER CLIENT COMMENTS
0	01/18/10	RB	RB	OF	APPROVED	

SCALE: NONE
 PAGE: 2 OF 3

BOB

PORT



STERN

JEFFBOAT - EX: DXE 2913



KIRBY INLAND MARINE

STRIPPING

PIPING FLOW DIAGRAM

REV.	1
SCALE:	NONE
PAGE:	3 OF 3

STARBOARD

- | | | | |
|---------|----------------------------|---------|----------------------------|
| NO. 1S | DESCRIPTION | NO. 28S | DESCRIPTION |
| NO. 4S | SLOP TANK | NO. 32S | CARGO PIPING SUCTION VALVE |
| NO. 5C | CARGO TANK SUCTION VALVE | NO. 33S | PUMP WELL PRIMER VALVE |
| NO. 12S | CARGO HEADER VALVE | NO. 43S | PUMP WELL SUCTION VALVE |
| NO. 14S | RETURN TO CARGO TANK VALVE | | DRIP PAN SUCTION VALVE |
| NO. 15S | DISCHARGE VALVE | | ABOVE DECK PIPING |
| NO. 18S | HEADER DISCHARGE VALVE | | |
| NO. 19C | STRIPPING DROP | | |
| | CARGO HEADER | | |

NOTE 1: CONTAINMENT P&S

REV.	DATE	BY	CHK APP	REVISION DESCRIPTION
1	03/03/17	WFB	DDA	REVISED PER CLIENT COMMENTS
0	01/18/10	RB	RB	APPROVED