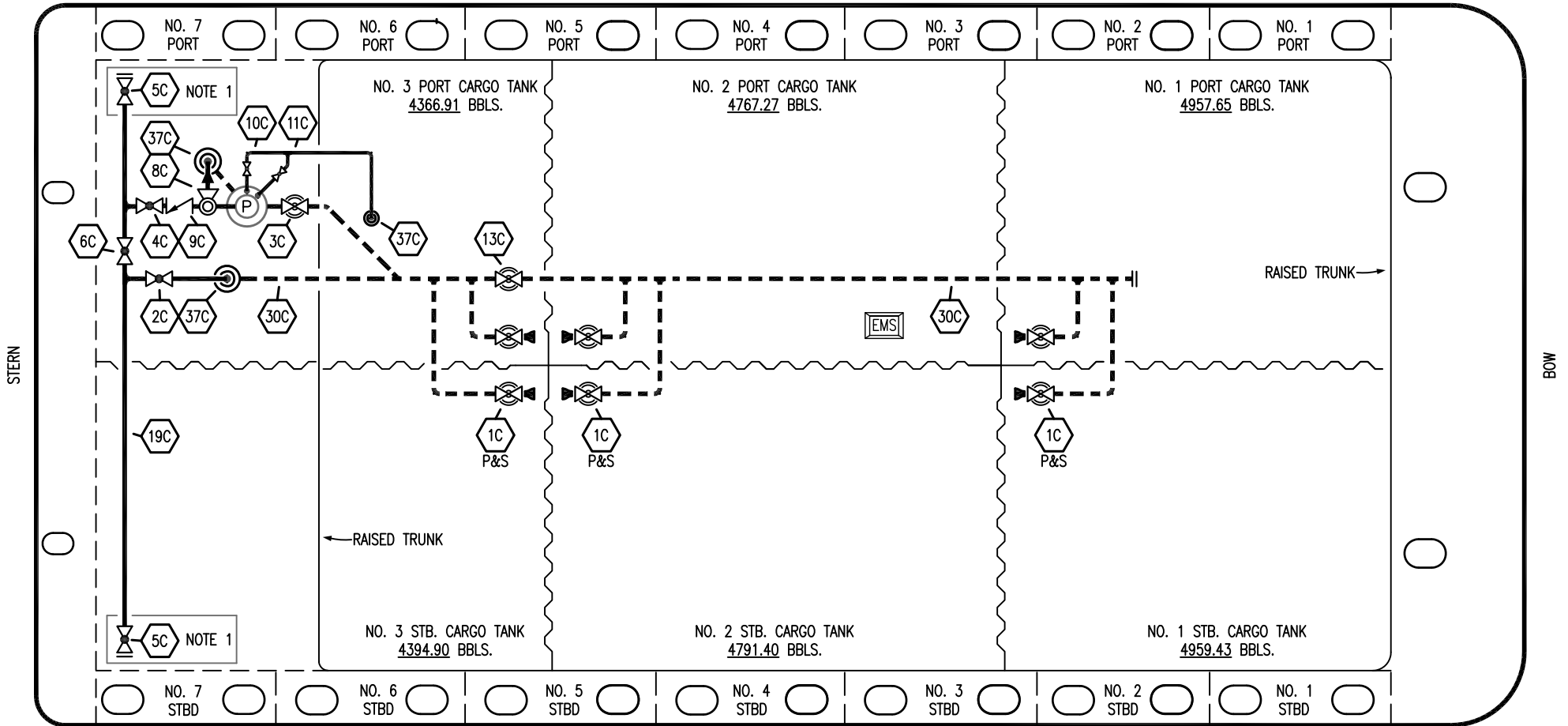


PORT



STARBOARD

- |    |                      |       |                          |
|----|----------------------|-------|--------------------------|
| NO | DESCRIPTION          | NO    | DESCRIPTION              |
| 1C | CARGO TANK VALVE     | 10C   | BURP VALVE               |
| 2C | LOAD VALVE           | 11C   | BLEED OFF VALVE          |
| 3C | MASTER SUCTION VALVE | 13C   | CARGO PIPING BLOCK VALVE |
| 4C | DISCHARGE VALVE      | 19C   | CARGO HEADER             |
| 5C | HEADER VALVE         | 30C   | CARGO PIPELINE           |
| 6C | SALVAGE VALVE        | 37C   | CARGO DROP               |
| 8C | RELIEF VALVE         | —     | — ABOVE DECK PIPING      |
| 9C | CHECK VALVE          | - - - | - - - BELOW DECK PIPING  |

NOTE 1: CONTAINMENT P/S

REV.	DATE	BY	CHK	APP	REVISION DESCRIPTION
4	02/28/24	MRV	DDA	REM	REVISED PER CLIENT COMMENTS
3	11/18/14	DDA	DDA		REVISED PER CLIENT COMMENTS
2	11/07/13	DCB	DDA		MOVED 13C
1	03/08/11	DCB	DDA		REVISED TANK CAPACITY
A	01/07/11	BAG	RB	OF	FOR APPROVAL

TRINITY

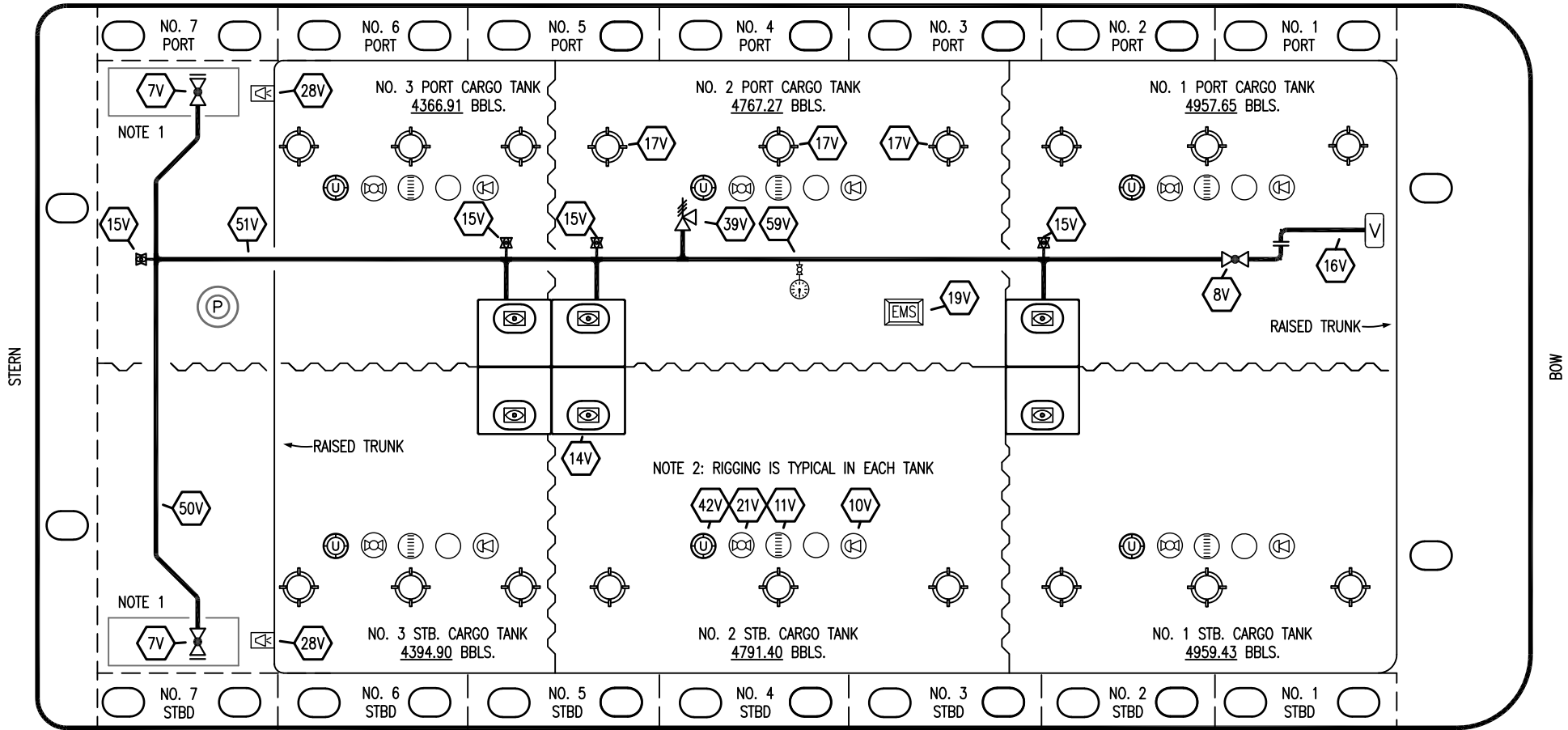
**KIRBY INLAND MARINE**

**CARGO**

**PIPING FLOW DIAGRAM**

SCALE: NONE	<b>KIRBY 28196</b>	REV. <b>4</b>
PAGE: 1 OF 3		

PORT



STERN

BOW

STARBOARD

NO	DESCRIPTION	NO	DESCRIPTION
7V	8" HEADER VALVE	21V	2" HERMETIC GAUGE
8V	8" VENT STACK VALVE	28V	DOCK CONNECTION ALARM
10V	8" HIGH LEVEL/OVERFILL ALARM	39V	PRESS/VAC RELIEF VALVE
11V	8" 1-METER STICK GAUGE	42V	8" ULLAGE HATCH
14V	6" SIGHT GLASS W/GAUGE TREE	50V	8" VAPOR HEADER
15V	2" INSPECTION PORT	51V	8" VAPOR PIPELINE
16V	8" VAPOR VENT STACK	59V	PRESS/VAC GAUGE
17V	14" BUTTERWORTH	—	ABOVE DECK PIPING
18V	2" RESTRICTIVE GAUGE TUBE		
19V	EMERGENCY ENGINE SHUT DOWN		

NOTE 1: CONTAINMENT P/S

NOTE 2: RIGGING IS TYPICAL IN EACH TANK

TRINITY

REV.	DATE	BY	CHK	APP	REVISION DESCRIPTION
2	02/28/24	MRV	DDA	REM	REVISED PER CLIENT COMMENTS
1	11/18/14	DDA	DDA		REVISED PER CLIENT COMMENTS
0	10/02/13	DCB	DDA		ISSUED FOR APPROVAL

**KIRBY INLAND MARINE** 

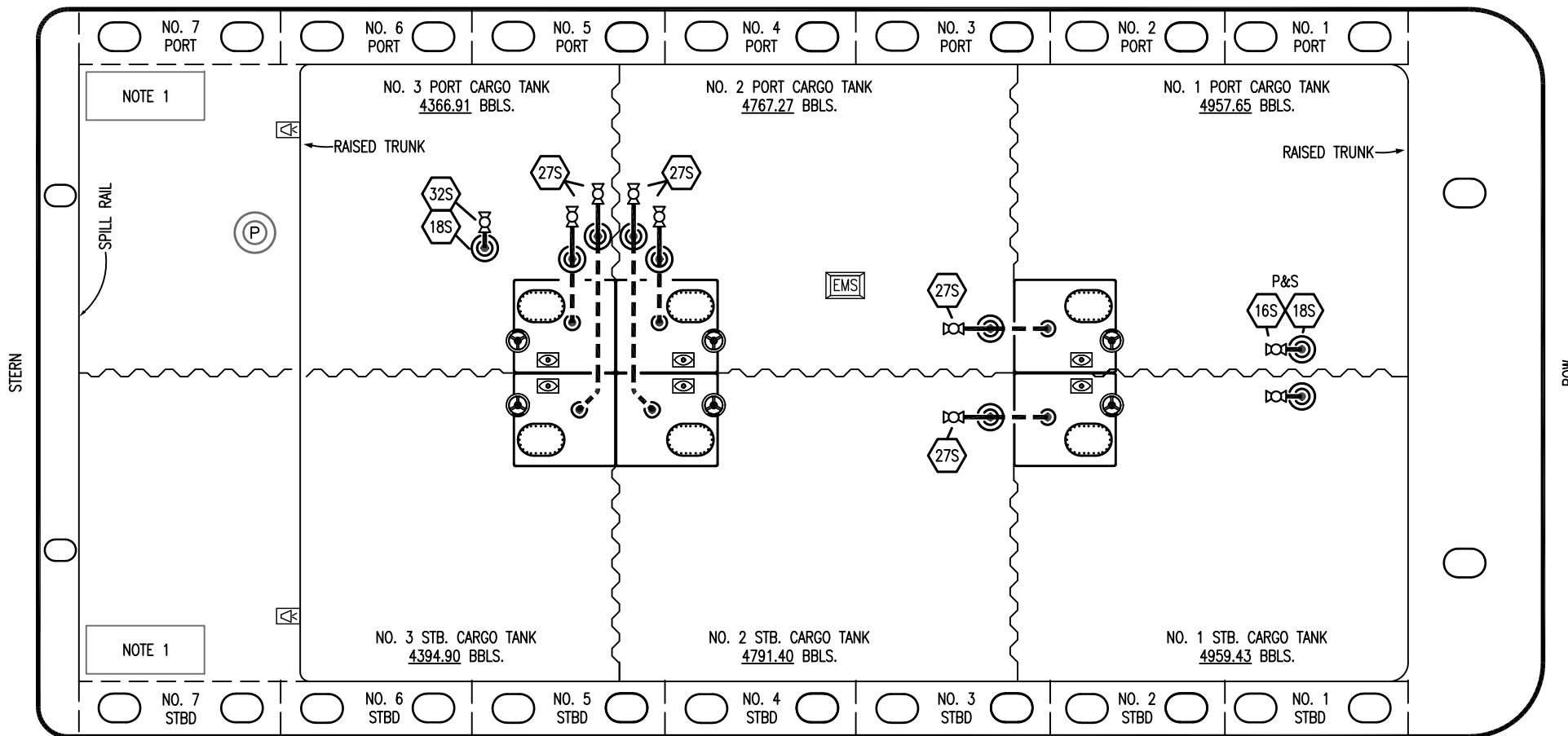
**VAPOR  
PIPING FLOW DIAGRAM**

SCALE: NONE  
PAGE: 2 OF 3

**KIRBY 28196**

REV. **2**

PORT



NOTE 1

NOTE 1

- | NO    | DESCRIPTION               |
|-------|---------------------------|
| 16S   | REMOTE SUCTION CONNECTION |
| 18S   | TYP. STRIPPING DROP       |
| 27S   | SUMP SUCTION VALVE        |
| —     | ABOVE DECK PIPING         |
| - - - | BELOW DECK PIPING         |

NOTE 1: CONTAINMENT P/S

TRINITY

REV.	DATE	BY	CHK	APP	REVISION DESCRIPTION
4	02/28/24	MRV	DDA	REM	REVISED PER CLIENT COMMENTS
3	11/18/14	DDA	DDA		REVISED PER CLIENT COMMENTS
2	11/07/13	DCB	DDA		REVISED PIPING
1	03/01/11	DCB	DDA		REVISED CARGO CAPACITY
0	10/14/11	JN	DDA		ISSUED FOR APPROVAL

KIRBY INLAND MARINE

STRIPPING  
PIPING FLOW DIAGRAM

SCALE: NONE	KIRBY 28196	REV. 4
PAGE: 3 OF 3		