


- |     |                      |
|-----|----------------------|
| NO  | DESCRIPTION          |
| 1C  | CARGO TANK VALVE     |
| 2C  | LOAD VALVE           |
| 3C  | MASTER SUCTION VALVE |
| 4C  | DISCHARGE VALVE      |
| 5C  | HEADER VALVE         |
| 6C  | SALVAGE VALVE        |
| 8C  | RELIEF VALVE         |
| 9C  | CHECK VALVE          |
| 10C | BURP VALVE           |
| 11C | BLEED OFF VALVE      |

- |       |                                 |
|-------|---------------------------------|
| NO    | DESCRIPTION                     |
| 12C   | BURP VALVE RETURN TO CARGO TANK |
| 13C   | CARGO PIPING BLOCK VALVE        |
| 19C   | CARGO HEADER                    |
| 24C   | FLOW INDICATOR                  |
| 30C   | CARGO PIPELINE                  |
| 37C   | CARGO DROP                      |
| —     | ABOVE DECK PIPING               |
| - - - | BELOW DECK PIPING               |

NOTE 1: CONTAINMENT P/S

REV.	DATE	BY	CHK	APP	REVISION DESCRIPTION
2	11/07/13	DCB	DDA		MOVED 13C
1	03/08/11	DCB	DDA		REVISED TANK CAPACITY
A	01/07/11	BAG	RB	OF	FOR APPROVAL



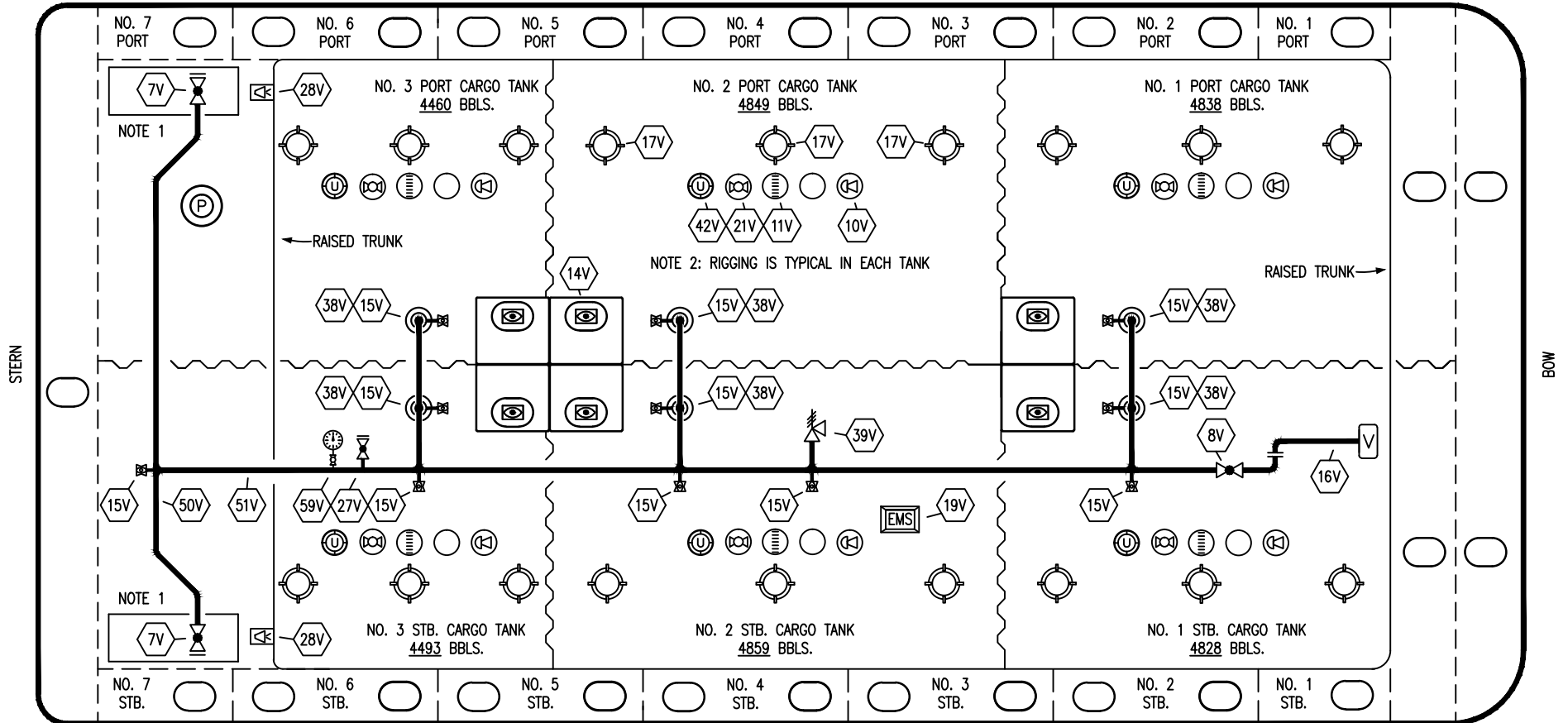
## KIRBY INLAND MARINE

### CARGO PIPING FLOW DIAGRAM

SCALE: NONE	<b>KIRBY 28195</b>
PAGE: 1 OF 3	REV. <b>2</b>

TRINITY

PORT



STERN

BOW

STARBOARD

NO	DESCRIPTION	NO	DESCRIPTION
7V	8" HEADER VALVE	21V	2" HERMETIC GAUGE
8V	8" VENT STACK VALVE	27V	1/4" TEST CONNECTION VALVE
10V	8" HIGH LEVEL/OVERFILL ALARM	28V	DOCK CONNECTION ALARM
11V	8" 1-METER STICK GAUGE	38V	8" VAPOR PENETRATION (P)
14V	6" SIGHT GLASS W/GAUGE TREE	39V	PRESS/VAC RELIEF VALVE
15V	2" INSPECTION PORT	42V	8" ULLAGE HATCH
16V	8" VAPOR VENT STACK	50V	8" VAPOR HEADER
17V	14" BUTTERWORTH	51V	8" VAPOR PIPELINE
18V	2" RESTRICTIVE GAUGE TUBE	59V	PRESS/VAC GAUGE
19V	EMERGENCY ENGINE SHUT DOWN	—	ABOVE DECK PIPING

NOTE 1: CONTAINMENT P/S

NOTE 2: RIGGING IS TYPICAL IN EACH TANK

TRINITY

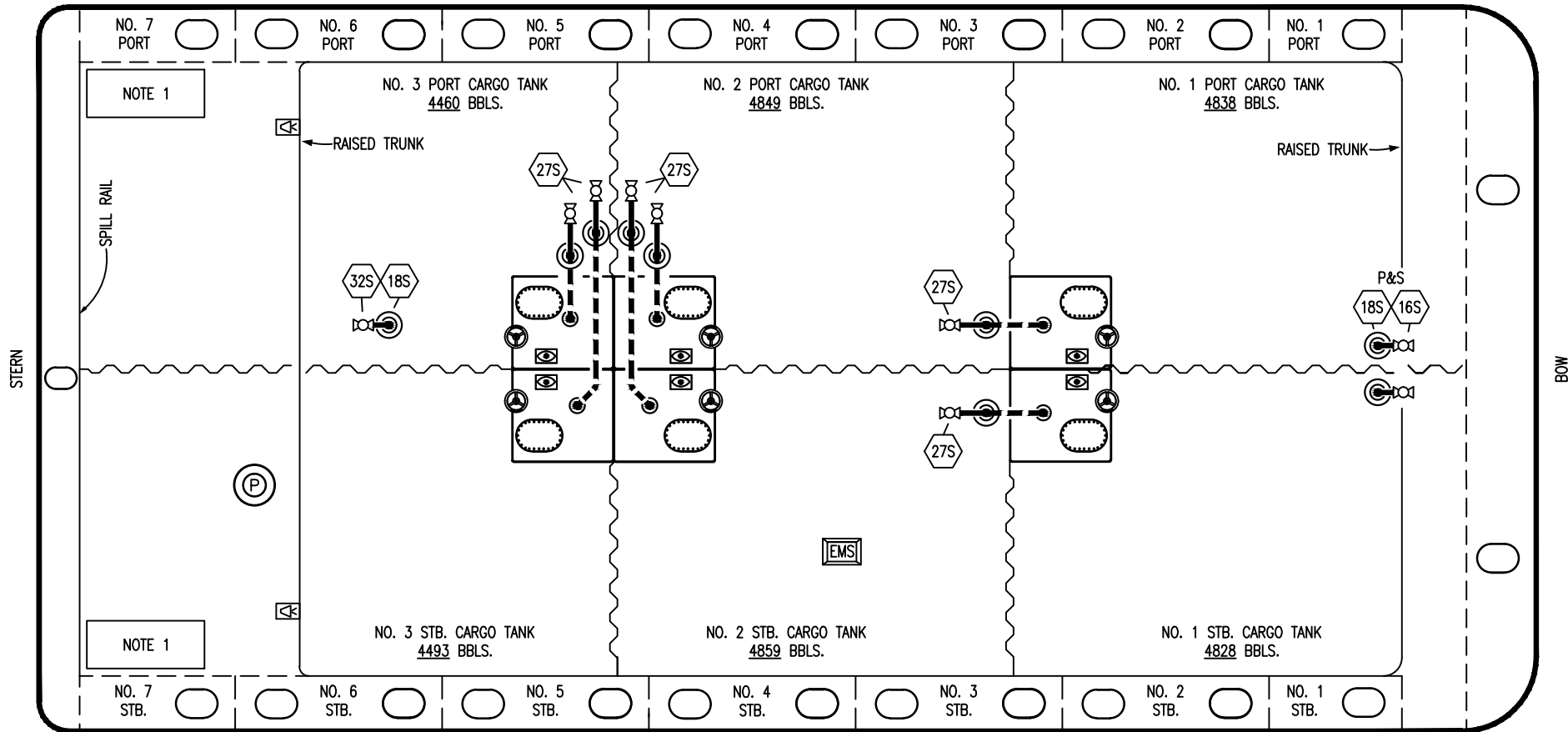
REV.	DATE	BY	CHK	APP	REVISION DESCRIPTION
0	10/02/13	DCB	DDA		ISSUED FOR APPROVAL

**KIRBY INLAND MARINE**

**VAPOR  
PIPING FLOW DIAGRAM**

SCALE: NONE	<b>KIRBY 28195</b>
PAGE: 2 OF 3	REV. <b>0</b>

PORT



- | NO  | DESCRIPTION               |
|-----|---------------------------|
| 16S | REMOTE SUCTION CONNECTION |
| 18S | TYP. STRIPPING DROP       |
| 27S | SUMP SUCTION VALVE        |
|     | ABOVE DECK PIPING         |
|     | BELOW DECK PIPING         |

NOTE 1: CONTAINMENT P/S

TRINITY

						<b>KIRBY INLAND MARINE</b>	
						<b>STRIPPING</b>	
						<b>PIPING FLOW DIAGRAM</b>	
2	11/07/13	DCB	DDA		REVISED PIPING	SCALE: NONE	<b>KIRBY 28195</b>
1	03/01/11	DCB	DDA		REVISED CARGO CAPACITY		
0	10/14/11	JN	DDA		ISSUED FOR APPROVAL		
REV.	DATE	BY	CHK	APP	REVISION DESCRIPTION	PAGE: 3 OF 3	<b>2</b>