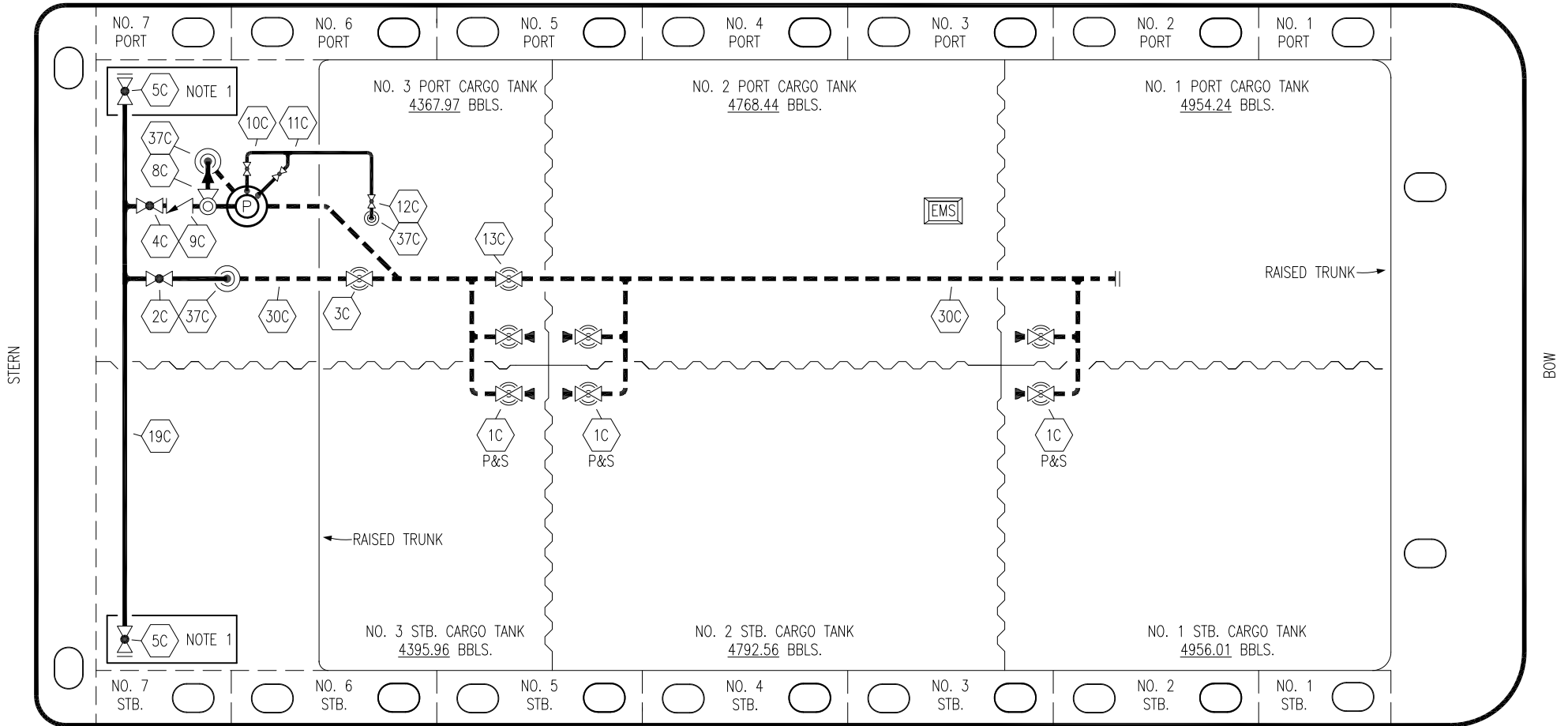


PORT



STARBOARD

- | | | | |
|-----|----------------------|-----|---------------------------------|
| NO | DESCRIPTION | NO | DESCRIPTION |
| 1C | CARGO TANK VALVE | 12C | BURP VALVE RETURN TO CARGO TANK |
| 2C | LOAD VALVE | 13C | CARGO PIPING BLOCK VALVE |
| 3C | MASTER SUCTION VALVE | 19C | CARGO HEADER |
| 4C | DISCHARGE VALVE | 30C | CARGO PIPELINE |
| 5C | HEADER VALVE | 37C | CARGO DROP |
| 8C | RELIEF VALVE | | ABOVE DECK PIPING |
| 9C | CHECK VALVE | | BELOW DECK PIPING |
| 10C | BURP VALVE | | |
| 11C | BLEED OFF VALVE | | |

NOTE 1: CONTAINMENT P/S

TRINITY

REV.	DATE	BY	CHK	APP	REVISION DESCRIPTION
4	08/29/22	MRV	DDA	FIX	REVISED PER CLIENT COMMENTS
3	08/29/14	DDA	DDA		REVISED PER CLIENT COMMENTS
2	11/07/13	DCB	DDA		MOVED 13C
1	03/08/11	DCB	DDA		REVISED TANK CAPACITY
A	01/07/11	BAG	RB	OF	FOR APPROVAL

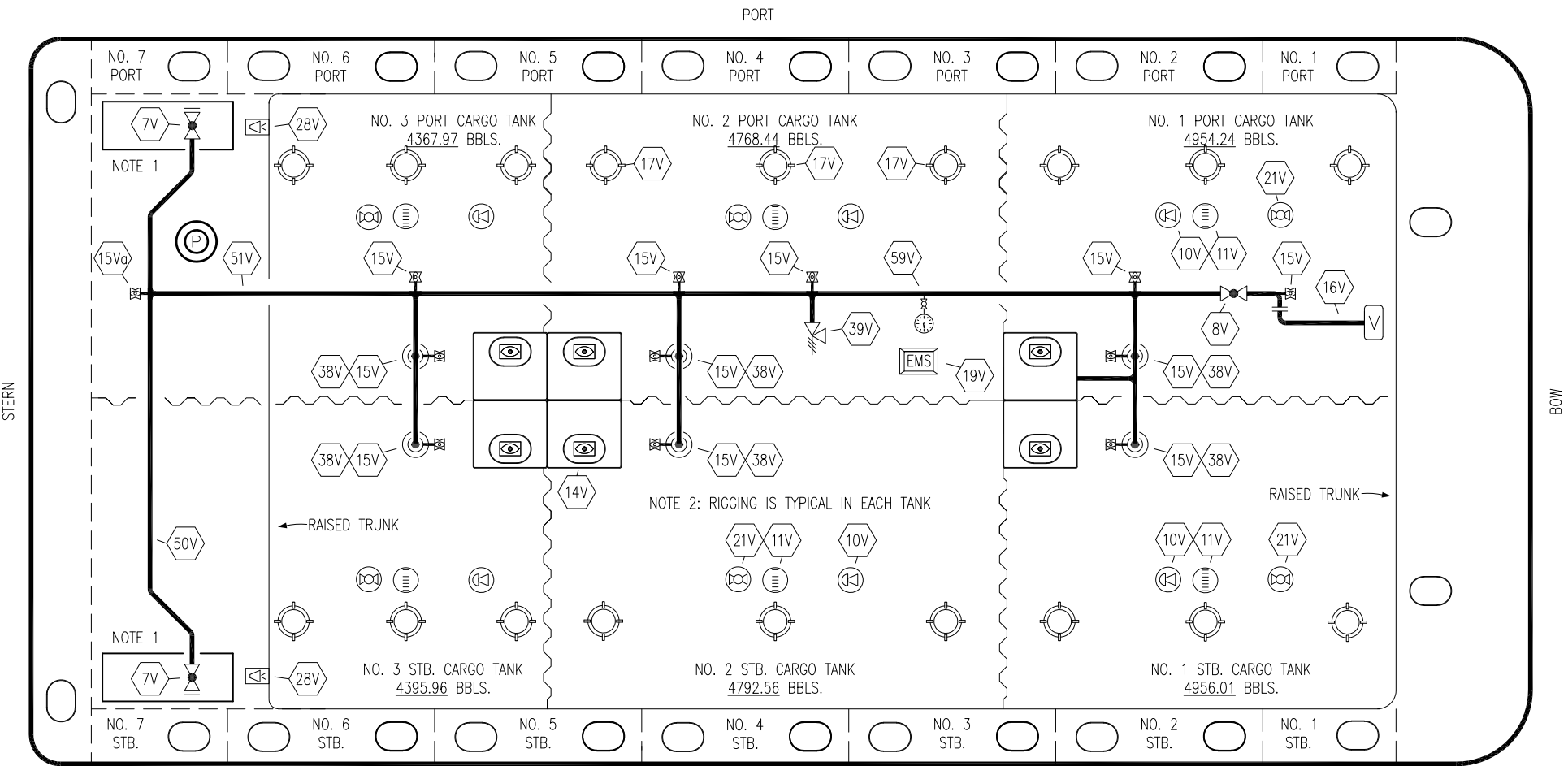
KIRBY INLAND MARINE

CARGO
PIPING FLOW DIAGRAM

KIRBY 28193

REV. 4

SCALE: NONE
PAGE: 1 OF 3



NOTE 1: CONTAINMENT P/S
 NOTE 2: RIGGING IS TYPICAL IN EACH TANK

NO	DESCRIPTION	NO	DESCRIPTION
7V	HEADER VALVE	19V	EMERGENCY ENGINE SHUT DOWN
8V	VENT STACK VALVE	21V	HERMETIC GAUGE
10V	HIGH LEVEL/OVERFILL ALARM	28V	DOCK CONNECTION ALARM
11V	1-METER STICK GAUGE	38V	VAPOR PENETRATION
14V	SIGHT GLASS W/GAUGE TREE	39V	PRESS/VAC RELIEF VALVE
15V	INSPECTION PORT	50V	VAPOR HEADER
15Va	INSPECTION PORT	51V	VAPOR PIPELINE
16V	VAPOR VENT STACK	59V	PRESS/VAC GAUGE
17V	BUTTERWORTH	—	ABOVE DECK PIPING
18V	RESTRICTIVE GAUGE TUBE		

REV.	DATE	BY	CHK	APP	REVISION DESCRIPTION
2	08/29/22	MRV	DDA	FIX	REVISED PER CLIENT COMMENTS
1	08/29/14	DDA	DDA	OF	REVISED PER CLIENT COMMENTS
0	03/07/12	BTR	DDA		ISSUED FOR APPROVAL

TRINITY

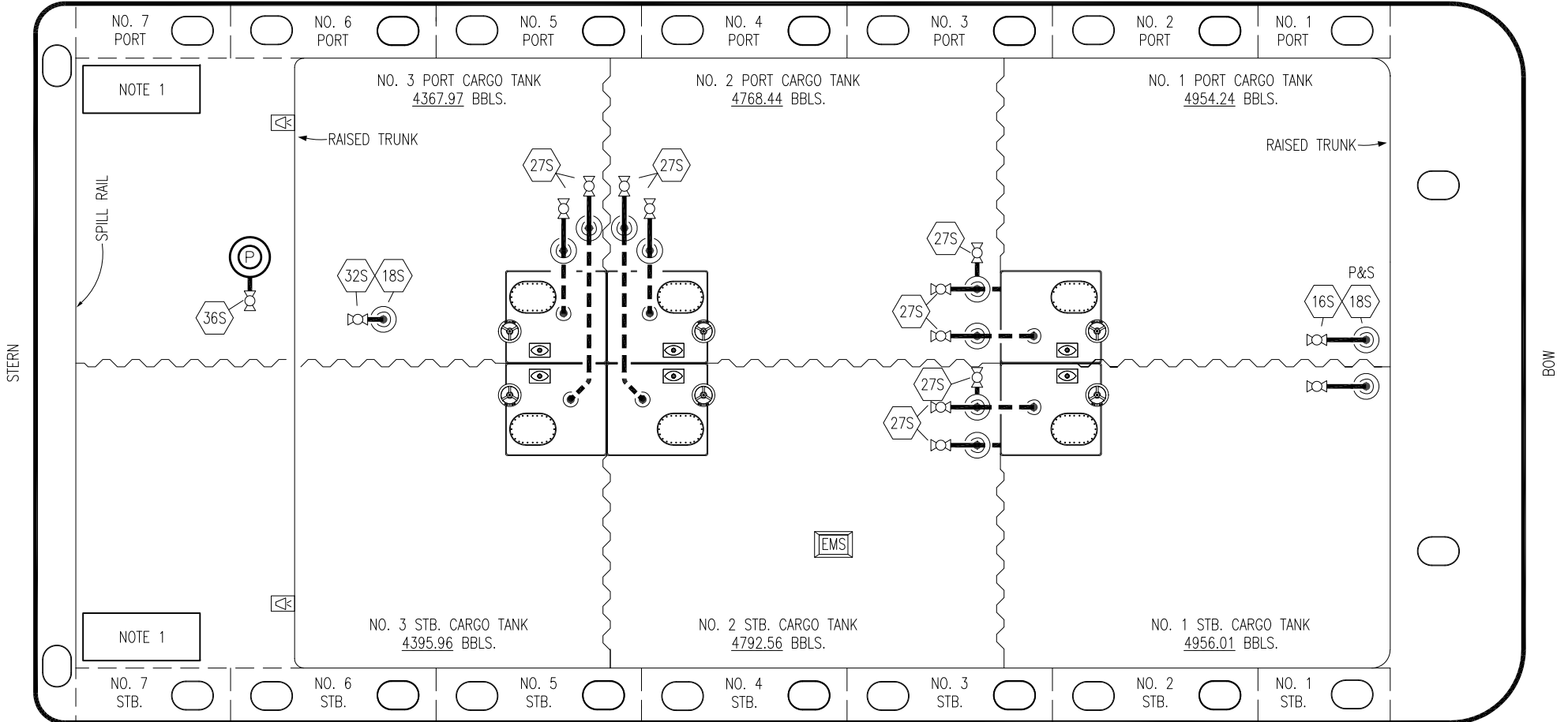
KIRBY INLAND MARINE

VAPOR
PIPING FLOW DIAGRAM

KIRBY 28193

SCALE: NONE	REV. 2
PAGE: 2 OF 3	

PORT



- | NO | DESCRIPTION |
|-------|--------------------------------|
| 18S | TYP. STRIPPING DROP |
| 27S | SUMP SUCTION VALVE |
| 36S | STRIPPING PUMP DISCHARGE VALVE |
| — | ABOVE DECK PIPING |
| - - - | BELOW DECK PIPING |

NOTE 1: CONTAINMENT P/S

TRINITY

REV.	DATE	BY	CHK	APP	REVISION DESCRIPTION
4	08/29/22	MRV	DDA	FIX	REVISED PER CLIENT COMMENTS
3	08/29/14	DDA	DDA		REVISED PER CLIENT COMMENTS
2	11/07/13	DCB	DDA		REVISED PIPING
1	03/01/11	DCB	DDA		REVISED CARGO CAPACITY
0	10/14/11	JN	DDA		ISSUED FOR APPROVAL

KIRBY INLAND MARINE

STRIPPING
PIPING FLOW DIAGRAM

SCALE: NONE	KIRBY 28193	REV.
PAGE: 3 OF 3		4