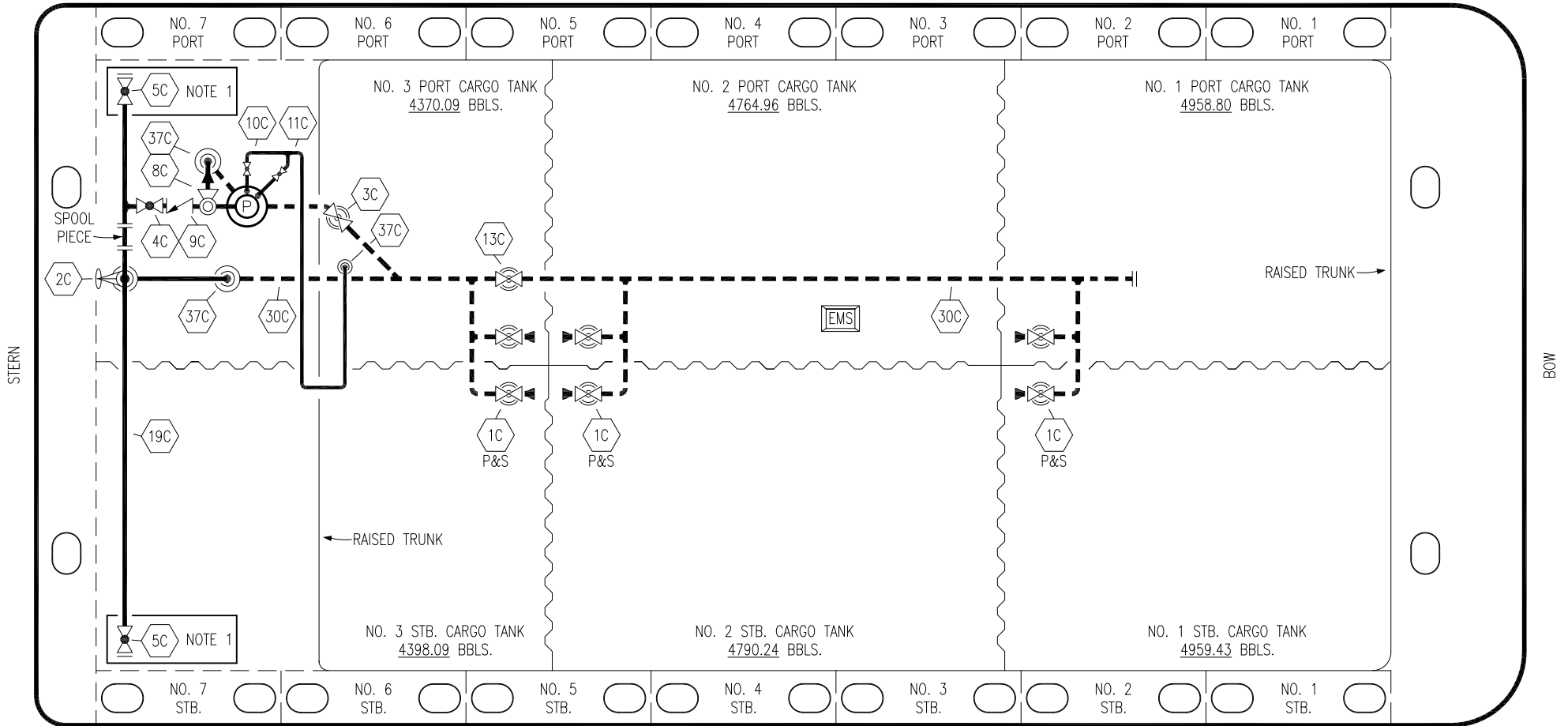


PORT



STARBOARD

- |     |                      |     |                          |
|-----|----------------------|-----|--------------------------|
| NO  | DESCRIPTION          | NO  | DESCRIPTION              |
| 1C  | CARGO TANK VALVE     | 11C | BLEED OFF VALVE          |
| 2C  | LOAD VALVE           | 13C | CARGO PIPING BLOCK VALVE |
| 3C  | MASTER SUCTION VALVE | 19C | CARGO HEADER             |
| 4C  | DISCHARGE VALVE      | 30C | CARGO PIPELINE           |
| 5C  | HEADER VALVE         | 37C | CARGO DROP               |
| 8C  | RELIEF VALVE         |     | ABOVE DECK PIPING        |
| 9C  | CHECK VALVE          |     | BELOW DECK PIPING        |
| 10C | BURP VALVE           |     |                          |

NOTE 1: CONTAINMENT P/S

TRINITY

REV.	DATE	BY	CHK	APP	REVISION DESCRIPTION
5	06/20/22	MRV	DDA	LEP	REVISED PER CLIENT COMMENTS
4	08/08/18	WFB	DDA		REVISED PER CLIENT COMMENTS
3	04/27/17	WFB	DDA		REVISED PER CLIENT COMMENTS
2	11/07/13	DCB	DDA		MOVED 13C
1	03/08/11	DCB	DDA		REVISED TANK CAPACITY
A	01/07/11	BAG	RB	OF	FOR APPROVAL

KIRBY INLAND MARINE

**CARGO  
PIPING FLOW DIAGRAM**

SCALE: NONE  
PAGE: 1 OF 3

**KIRBY 28192**

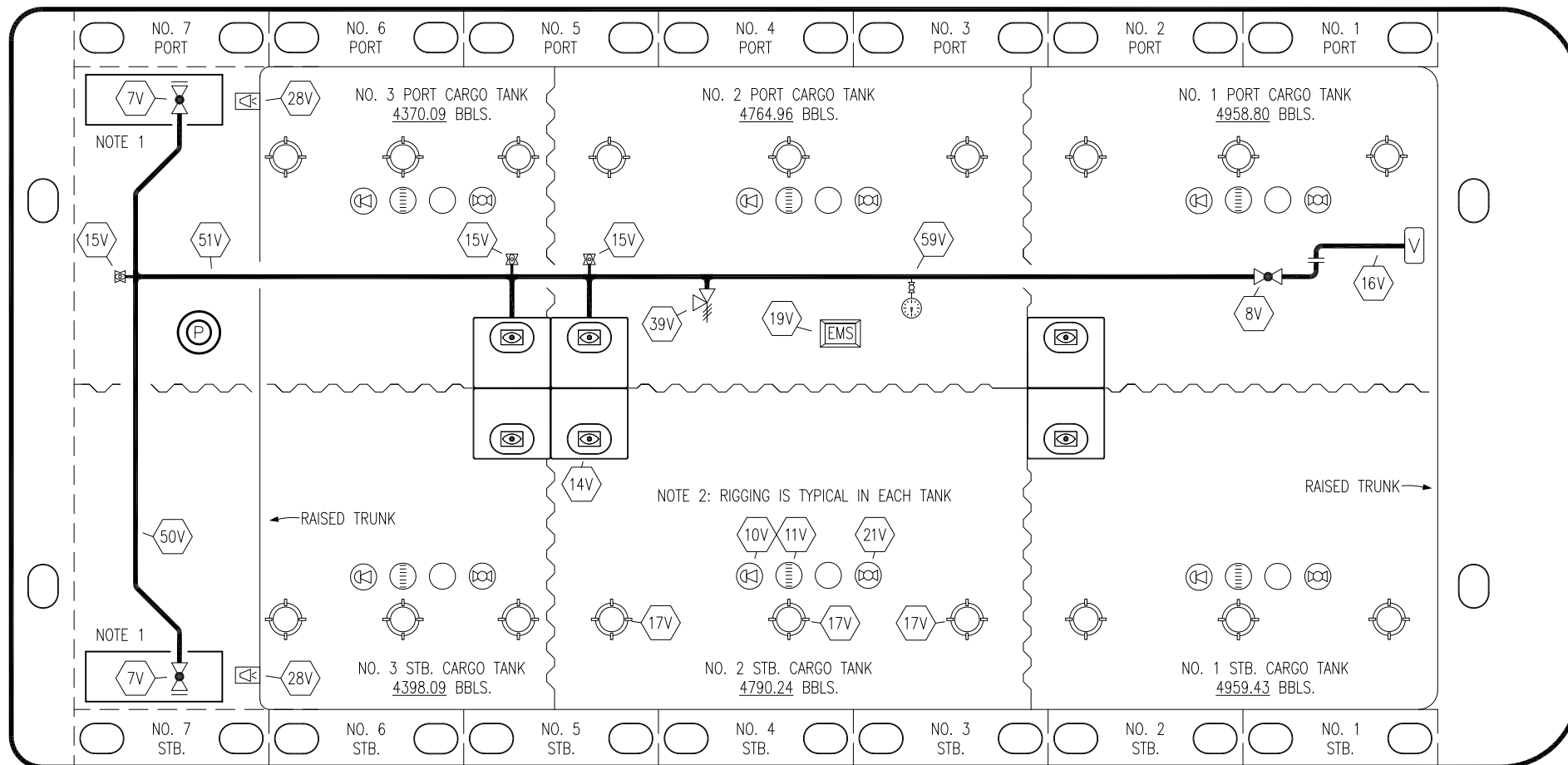
REV. **5**

PORT

STERN

BOW

STARBOARD



NO	DESCRIPTION	NO	DESCRIPTION
7V	8" HEADER VALVE	21V	2" HERMETIC GAUGE
8V	8" VENT STACK VALVE	28V	DOCK CONNECTION ALARM
10V	8" HIGH LEVEL/OVERFILL ALARM	39V	PRESS/VAC RELIEF VALVE
11V	8" 1-METER STICK GAUGE	50V	8" VAPOR HEADER
14V	6" SIGHT GLASS W/GAUGE TREE	51V	8" VAPOR PIPELINE
15V	2" INSPECTION PORT	59V	PRESS/VAC GAUGE
16V	8" VAPOR VENT STACK	—	ABOVE DECK PIPING
17V	BUTTERWORTH		
18V	2" RESTRICTIVE GAUGE TUBE		
19V	EMERGENCY ENGINE SHUT DOWN		

NOTE 1: CONTAINMENT P/S

NOTE 2: RIGGING IS TYPICAL IN EACH TANK

TRINITY

REV.	DATE	BY	CHK	APP	REVISION DESCRIPTION
2	06/20/22	MRV	DDA	LEP	REVISED PER CLIENT COMMENTS
1	08/08/18	WFB	DDA		REVISED PER CLIENT COMMENTS
0	03/07/12	BTR	DDA		ISSUED FOR APPROVAL

KIRBY INLAND MARINE 

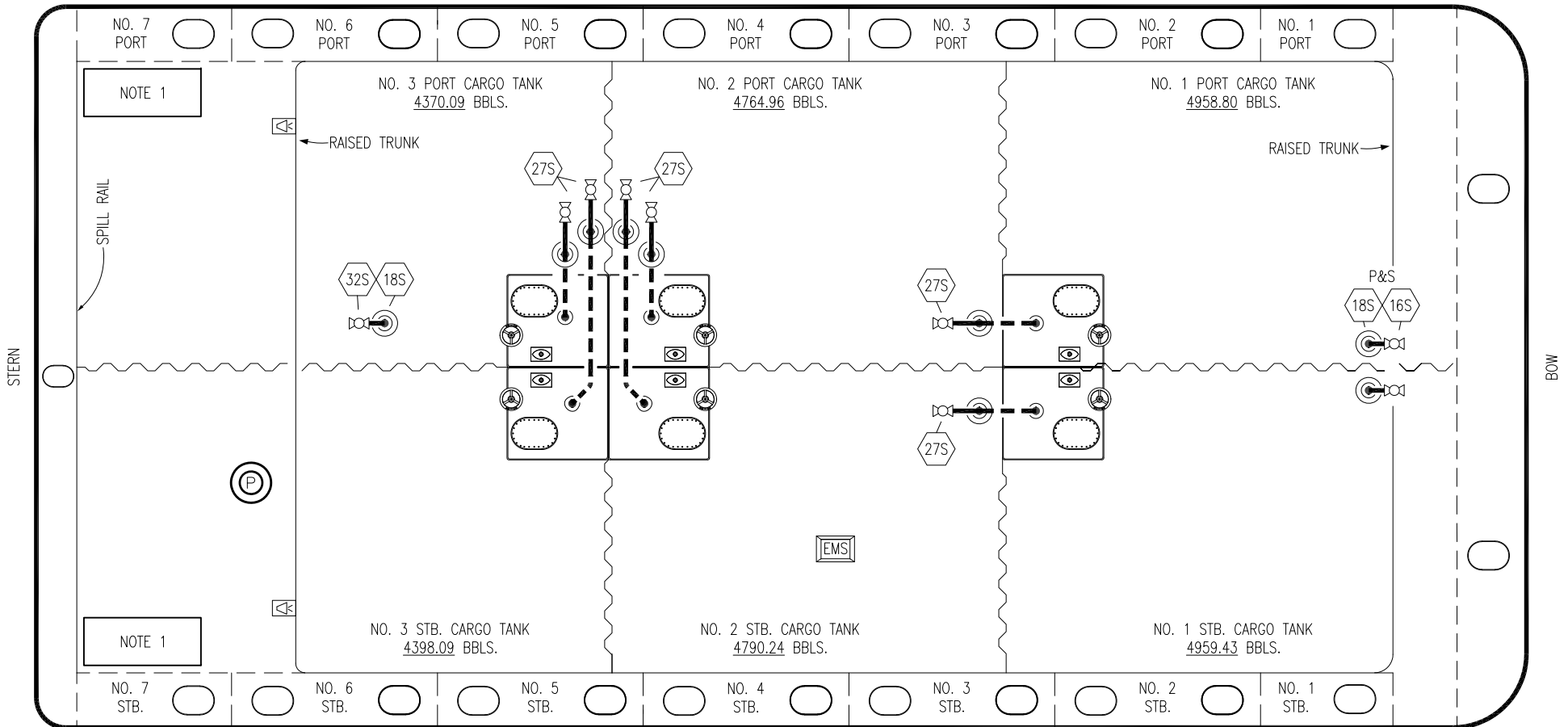
**VAPOR  
PIPING FLOW DIAGRAM**

SCALE: NONE  
PAGE: 2 OF 3

**KIRBY 28192**

REV. **2**

PORT




NOTE 1

NOTE 1

- | NO    | DESCRIPTION               |
|-------|---------------------------|
| 16S   | REMOTE SUCTION CONNECTION |
| 18S   | TYP. STRIPPING DROP       |
| 27S   | SUMP SUCTION VALVE        |
| —     | ABOVE DECK PIPING         |
| - - - | BELOW DECK PIPING         |

NOTE 1: CONTAINMENT P/S

TRINITY

						KIRBY INLAND MARINE 	
						<b>STRIPPING PIPING FLOW DIAGRAM</b>	
3	06/20/22	MRV	DDA	LEP	REVISED PER CLIENT COMMENTS		
2	11/07/13	DCB	DDA		REVISED PIPING		
1	03/01/11	DCB	DDA		REVISED CARGO CAPACITY		
0	10/14/11	JN	DDA		ISSUED FOR APPROVAL	SCALE: NONE	
REV.	DATE	BY	CHK	APP	REVISION DESCRIPTION	PAGE: 3 OF 3	<b>KIRBY 28192</b>
							<b>REV. 3</b>