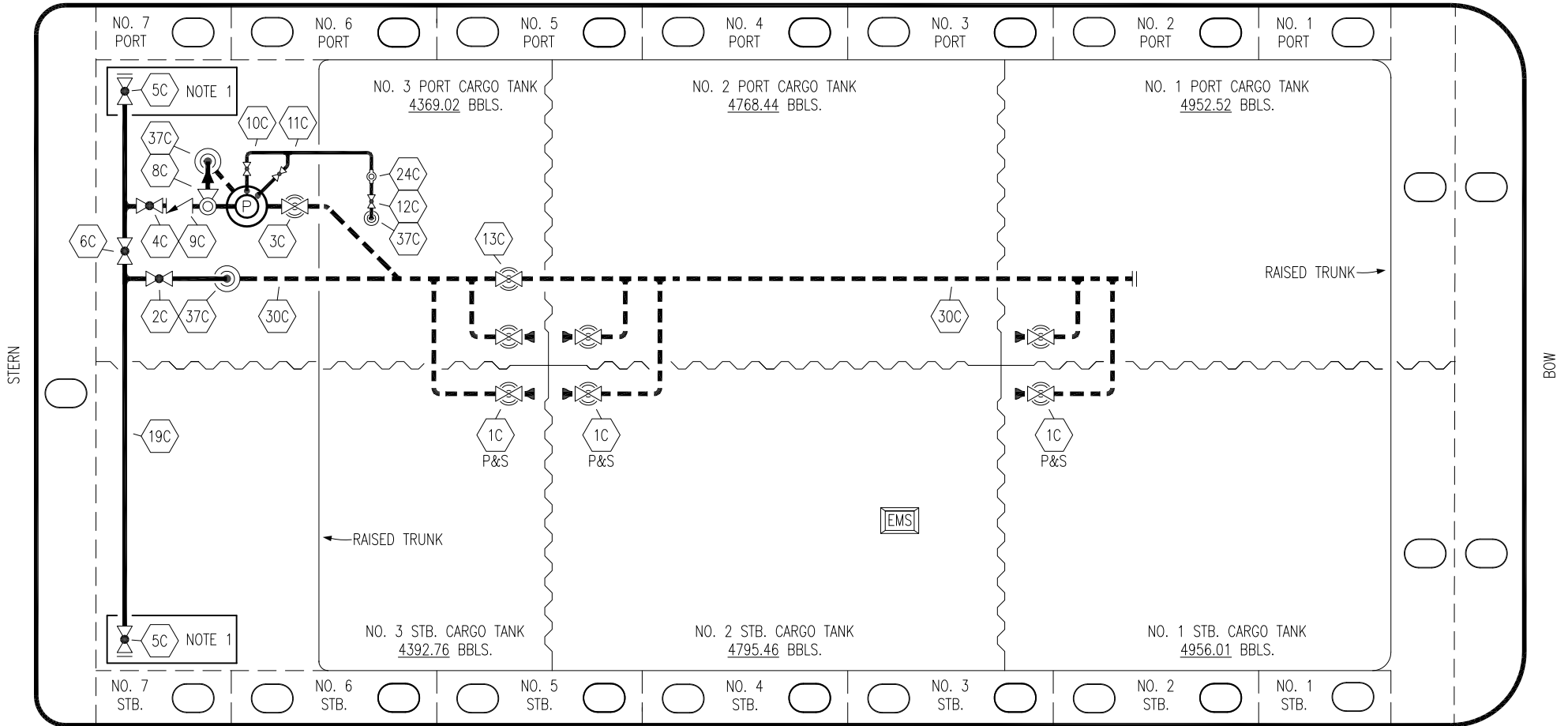





PORT




STARBOARD

- | | | | |
|-----|----------------------|---|--|
| NO | DESCRIPTION | NO | DESCRIPTION |
| 1C | CARGO TANK VALVE | 12C | BURP VALVE RETURN TO CARGO TANK |
| 2C | LOAD VALVE | 13C | CARGO PIPING BLOCK VALVE |
| 3C | MASTER SUCTION VALVE | 19C | CARGO HEADER |
| 4C | DISCHARGE VALVE | 24C | FLOW INDICATOR |
| 5C | HEADER VALVE | 30C | CARGO PIPELINE |
| 6C | SALVAGE SPOOL PIECE | 37C | CARGO DROP  |
| 8C | RELIEF VALVE |  | ABOVE DECK PIPING |
| 9C | CHECK VALVE |  | BELOW DECK PIPING |
| 10C | BURP VALVE | | |
| 11C | BLEED OFF VALVE | | |

NOTE 1: CONTAINMENT P/S

TRINITY

REV.	DATE	BY	CHK	APP	REVISION DESCRIPTION
4	01/27/22	MRV	DDA	KW	REVISED PER CLIENT COMMENTS
3	11/21/16	MG	DDA		UPDATED 6C DESCRIPTION
2	11/07/13	DCB	DDA		MOVED 13C
1	03/08/11	DCB	DDA		REVISED TANK CAPACITY
A	01/07/11	BAG	RB	OF	FOR APPROVAL



KIRBY INLAND MARINE

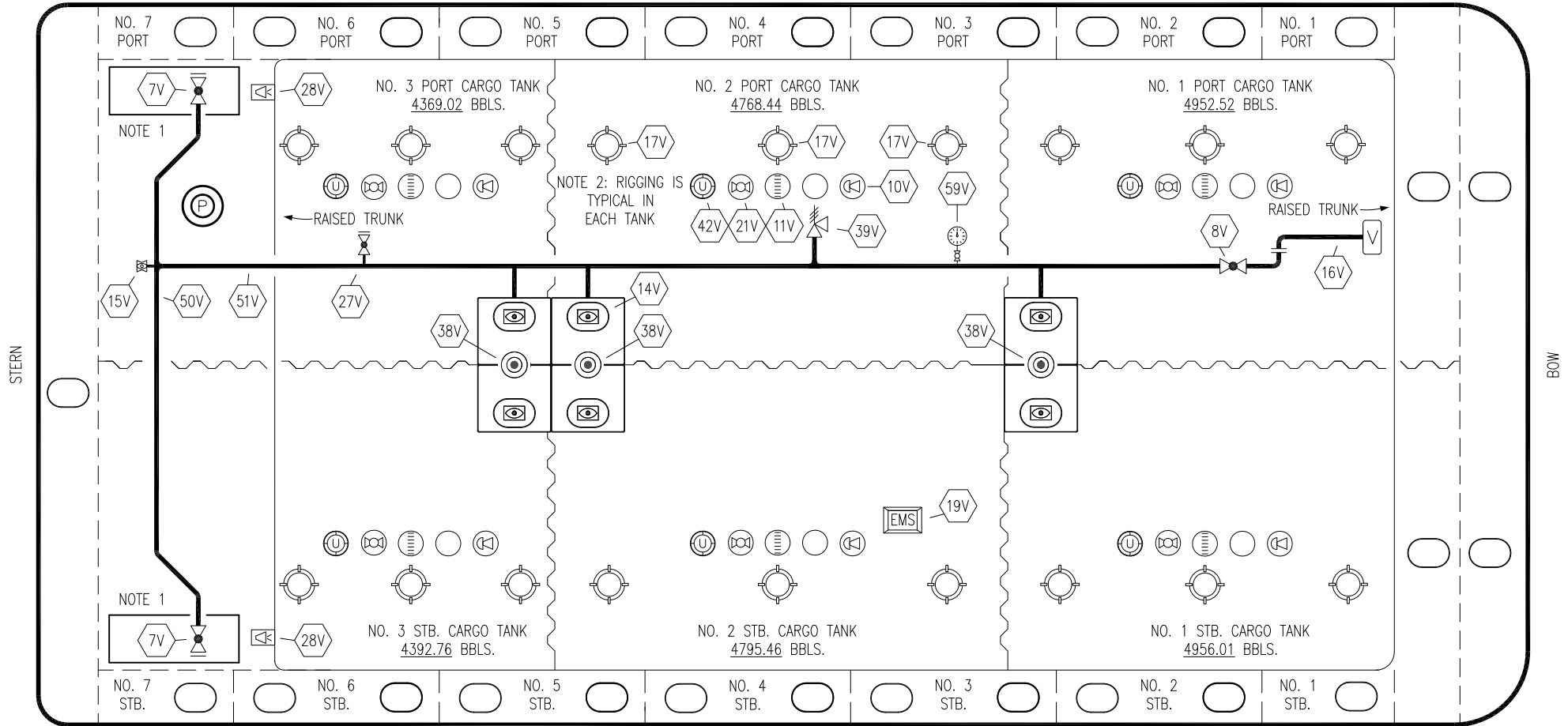
CARGO

PIPING FLOW DIAGRAM

KIRBY 28189

SCALE: NONE	REV. 4
PAGE: 1 OF 3	

PORT



STERN

BOW

STARBOARD

NO	DESCRIPTION	NO	DESCRIPTION
7V	8" HEADER VALVE	21V	2" HERMETIC GAUGE
8V	8" VENT STACK VALVE	27V	1/4" TEST CONNECTION VALVE
10V	8" HIGH LEVEL/OVERFILL ALARM	28V	DOCK CONNECTION ALARM
11V	8" 1-METER STICK GAUGE	38V	8" VAPOR PENETRATION
14V	6" SIGHT GLASS W/GAUGE TREE	39V	PRESS/VAC RELIEF VALVE
15V	2" INSPECTION PORT	42V	8" ULLAGE HATCH
16V	8" VAPOR VENT STACK	50V	8" VAPOR HEADER
17V	14" BUTTERWORTH	51V	8" VAPOR PIPELINE
18V	2" RESTRICTIVE GAUGE TUBE	59V	PRESS/VAC GAUGE
19V	EMERGENCY ENGINE SHUT DOWN	—	— ABOVE DECK PIPING

NOTE 1: CONTAINMENT P/S

NOTE 2: RIGGING IS TYPICAL IN EACH TANK

TRINITY

REV.	DATE	BY	CHK	APP	REVISION DESCRIPTION
2	01/27/22	MRV	DDA	KW	REVISED PER CLIENT COMMENTS
1	11/21/16	MG	DDA		REVISED PIPING
0	03/07/12	DCB	DDA		ISSUED FOR APPROVAL

KIRBY INLAND MARINE

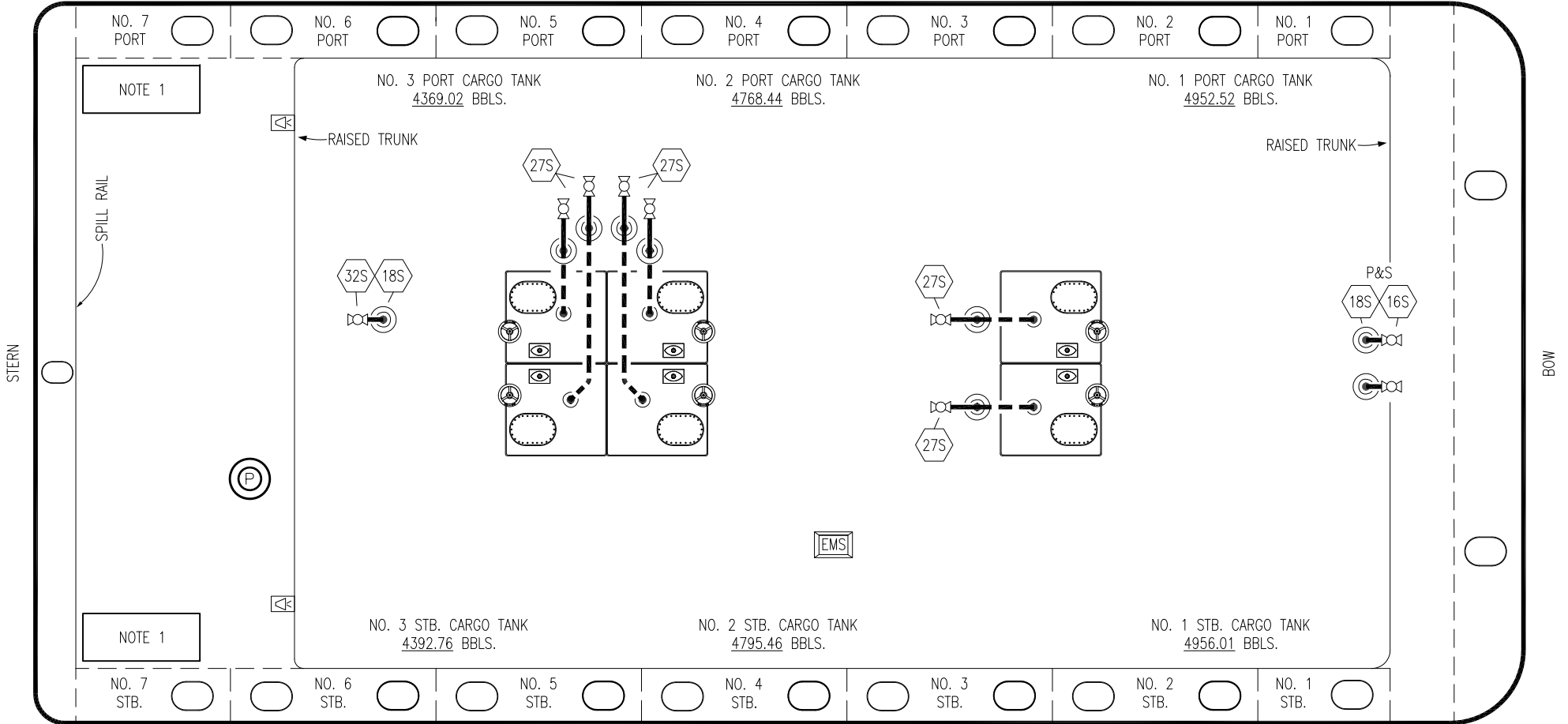
VAPOR
PIPING FLOW DIAGRAM




KIRBY 28189

REV. 2

SCALE: NONE
PAGE: 2 OF 3

PORT



- | NO | DESCRIPTION |
|---|---|
| 16S | REMOTE SUCTION CONNECTION |
| 18S | TYP. STRIPPING DROP  |
| 27S | SUMP SUCTION VALVE |
|  | ABOVE DECK PIPING |
|  | BELOW DECK PIPING |

NOTE 1: CONTAINMENT P/S

TRINITY

REV.	DATE	BY	CHK	APP	REVISION DESCRIPTION
3	01/27/22	MRV	DDA	KW	REVISED PER CLIENT COMMENTS
2	11/07/13	DCB	DDA		REVISED PIPING
1	03/01/11	DCB	DDA		REVISED CARGO CAPACITY
0	10/14/11	JN	DDA		ISSUED FOR APPROVAL

KIRBY INLAND MARINE 

**STRIPPING
PIPING FLOW DIAGRAM**

SCALE: NONE
PAGE: 3 OF 3

KIRBY 28189

REV. **3**