

- | | | | |
|-----|----------------------|-----|---------------------------------|
| NO | DESCRIPTION | NO | DESCRIPTION |
| 1C | CARGO TANK VALVE | 12C | BURP VALVE RETURN TO CARGO TANK |
| 2C | LOAD VALVE | 13C | CARGO PIPING BLOCK VALVE |
| 3C | MASTER SUCTION VALVE | 19C | CARGO HEADER |
| 4C | DISCHARGE VALVE | 24C | FLOW INDICATOR |
| 5C | HEADER VALVE | 30C | CARGO PIPELINE |
| 6C | SALVAGE SPOOL PIECE | 37C | CARGO DROP |
| 8C | RELIEF VALVE | — | — ABOVE DECK PIPING |
| 9C | CHECK VALVE | --- | --- BELOW DECK PIPING |
| 10C | BURP VALVE | | |
| 11C | BLEED OFF VALVE | | |

NOTE 1: CONTAINMENT P/S

| REV. | DATE | BY | CHK | APP | REVISION DESCRIPTION |
|------|----------|-----|-----|-----|------------------------|
| 3 | 11/21/16 | MG | DDA | | UPDATED 6C DESCRIPTION |
| 2 | 11/07/13 | DCB | DDA | | MOVED 13C |
| 1 | 03/08/11 | DCB | DDA | | REVISED TANK CAPACITY |
| A | 01/07/11 | BAG | RB | OF | FOR APPROVAL |

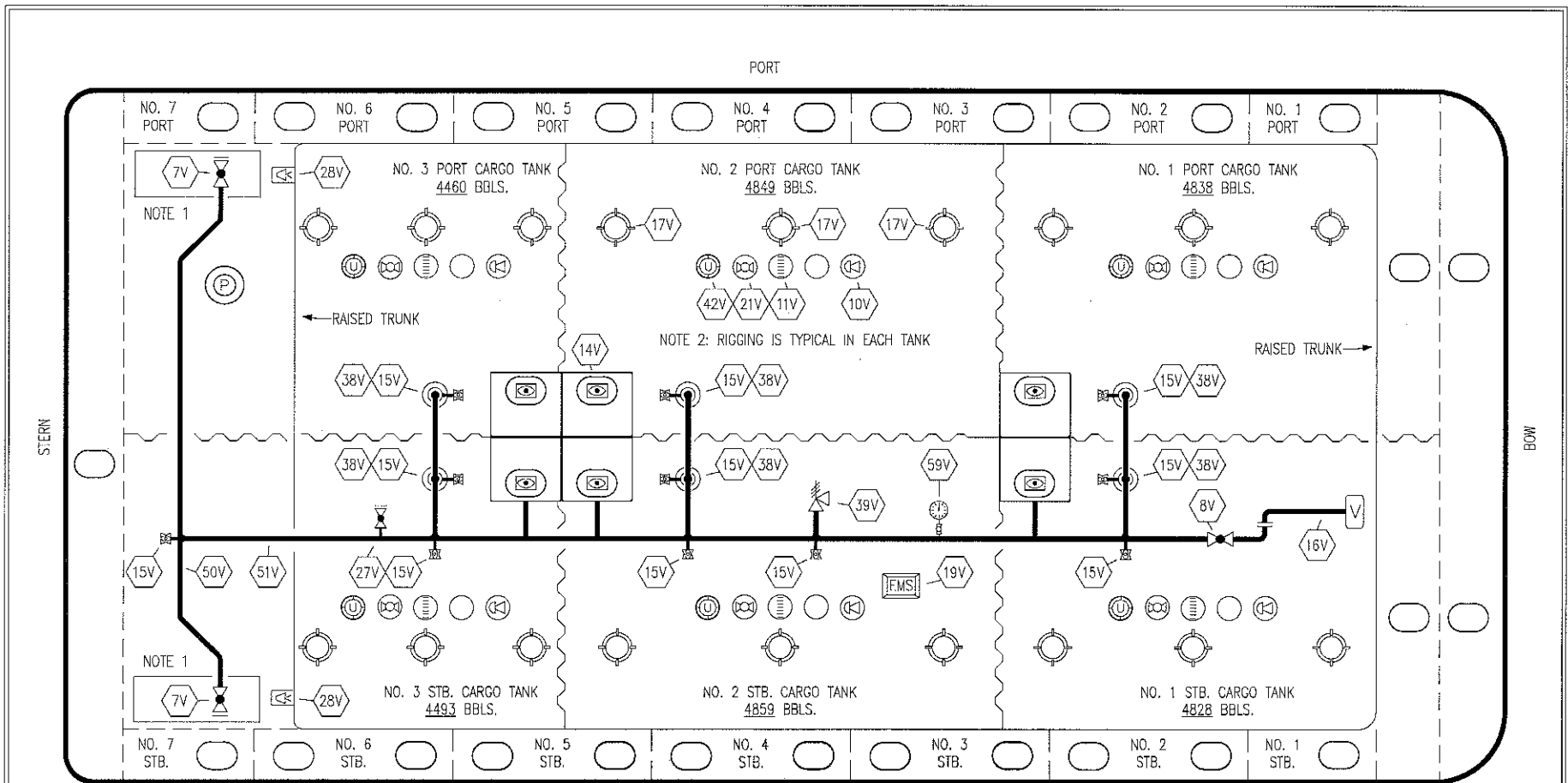
KIRBY INLAND MARINE

**CARGO
PIPING FLOW DIAGRAM**

SCALE: NONE
PAGE: 1 OF 3

KIRBY 28188 REV. **3**

TRINITY



| NO. | DESCRIPTION | NO. | DESCRIPTION |
|-----|------------------------------|-----|----------------------------|
| 7V | 8" HEADER VALVE | 21V | 2" HERMETIC GAUGE |
| 8V | 8" VENT STACK VALVE | 27V | 1/4" TEST CONNECTION VALVE |
| 10V | 8" HIGH LEVEL/OVERFILL ALARM | 28V | DOCK CONNECTION ALARM |
| 11V | 8" 1-METER STICK GAUGE | 38V | 8" VAPOR PENETRATION |
| 14V | 6" SIGHT GLASS W/GAUGE TREE | 39V | PRESS/VAC RELIEF VALVE |
| 15V | 2" INSPECTION PORT | 42V | 8" ULLAGE HATCH |
| 16V | 8" VAPOR VENT STACK | 50V | 8" VAPOR HEADER |
| 17V | 14" BUTTERWORTH | 51V | 8" VAPOR PIPELINE |
| 18V | 2" RESTRICTIVE GAUGE TUBE | 59V | PRESS/VAC GAUGE |
| 19V | EMERGENCY ENGINE SHUT DOWN | — | — |
| | | — | — |

NOTE 1: CONTAINMENT P/S
 NOTE 2: RIGGING IS TYPICAL IN EACH TANK

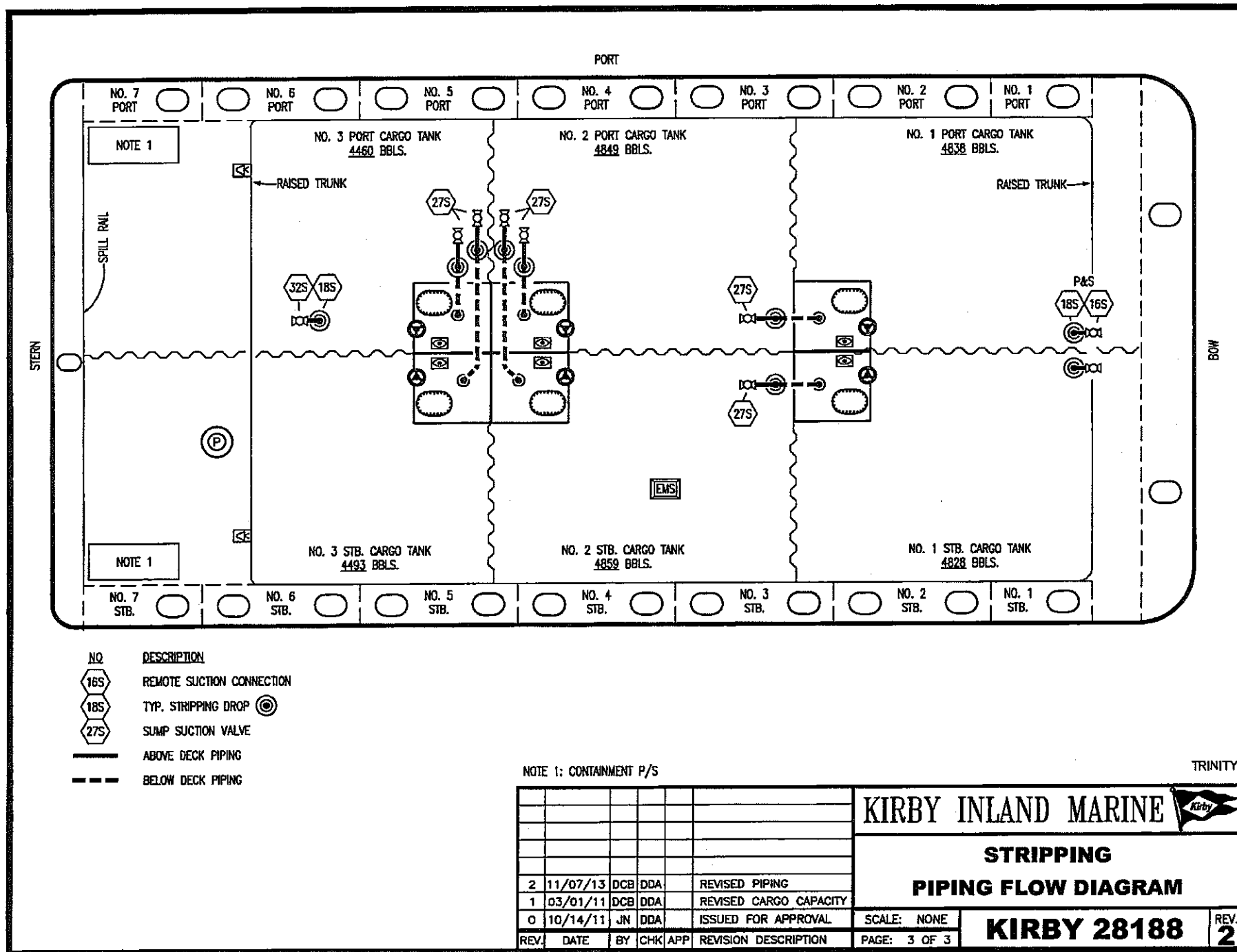
| REV. | DATE | BY | CHK | APP | REVISION DESCRIPTION |
|------|----------|-----|-----|-----|----------------------|
| 1 | 11/21/16 | MC | DDA | | REVISED PIPING |
| 0 | 03/07/12 | DCB | DDA | | ISSUED FOR APPROVAL |

TRINITY

KIRBY INLAND MARINE

**VAPOR
PIPING FLOW DIAGRAM**

| | | |
|--------------|--------------------|--------|
| SCALE: NONE | KIRBY 28188 | REV. 1 |
| PAGE: 2 OF 3 | | |



NOTE 1

NOTE 1

- NO DESCRIPTION
- 16S REMOTE SUCTION CONNECTION
- 18S TYP. STRIPPING DROP
- 27S SUMP SUCTION VALVE
- ABOVE DECK PIPING
- - - BELOW DECK PIPING

NOTE 1: CONTAINMENT P/S

TRINITY

| REV. | DATE | BY | CHK | APP | REVISION DESCRIPTION |
|------|----------|-----|-----|-----|------------------------|
| 2 | 11/07/13 | DCB | DDA | | REVISED PIPING |
| 1 | 03/01/11 | DCB | DDA | | REVISED CARGO CAPACITY |
| 0 | 10/14/11 | JN | DDA | | ISSUED FOR APPROVAL |

| | | | | |
|----------------------------|--|--|--------------------|-------------|
| KIRBY INLAND MARINE | | STRIPPING PIPING FLOW DIAGRAM | KIRBY 28188 | REV. 2 |
| | | | | SCALE: NONE |
| PAGE: 3 OF 3 | | | | |