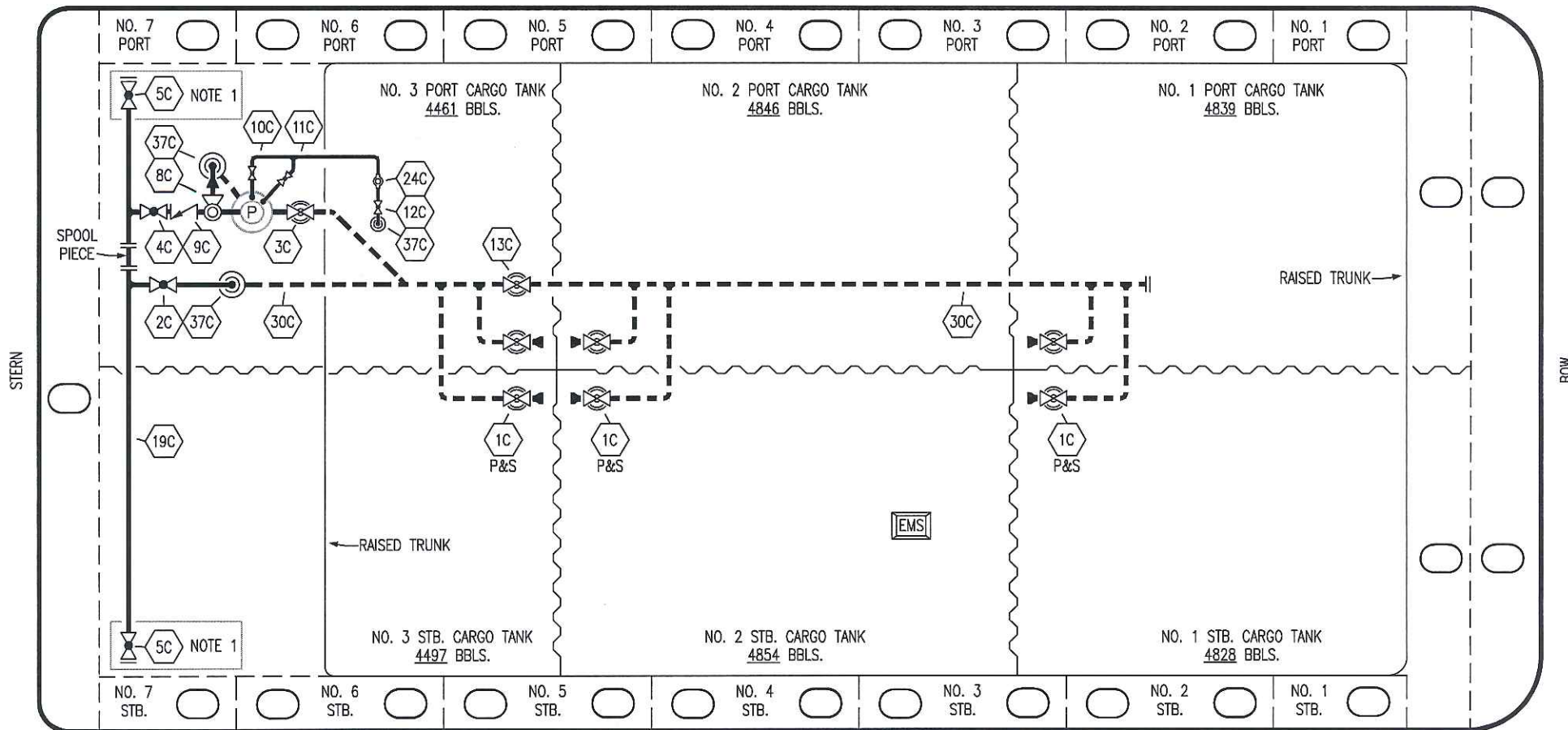


PORT



STARBOARD

NO	DESCRIPTION	NO	DESCRIPTION
1C	CARGO TANK VALVE	12C	BURP VALVE RETURN TO CARGO TANK
2C	LOAD VALVE	13C	CARGO PIPING BLOCK VALVE
3C	MASTER SUCTION VALVE	19C	CARGO HEADER
4C	DISCHARGE VALVE	24C	FLOW INDICATOR
5C	HEADER VALVE	30C	CARGO PIPELINE
8C	RELIEF VALVE	37C	CARGO DROP
9C	CHECK VALVE	—	— ABOVE DECK PIPING
10C	BURP VALVE	---	--- BELOW DECK PIPING
11C	BLEED OFF VALVE		

NOTE 1: CONTAINMENT P/S

REV.	DATE	BY	CHK	APP	REVISION DESCRIPTION
3	03/09/17	WFB	DDA		REVISED PER CLIENT COMMENTS
2	11/07/13	DCB	DDA		MOVED 13C
1	03/08/11	DCB	DDA		REVISED TANK CAPACITY
A	01/07/11	BAG	RB	OF	FOR APPROVAL

KIRBY INLAND MARINE 

**CARGO
PIPING FLOW DIAGRAM**

SCALE: NONE

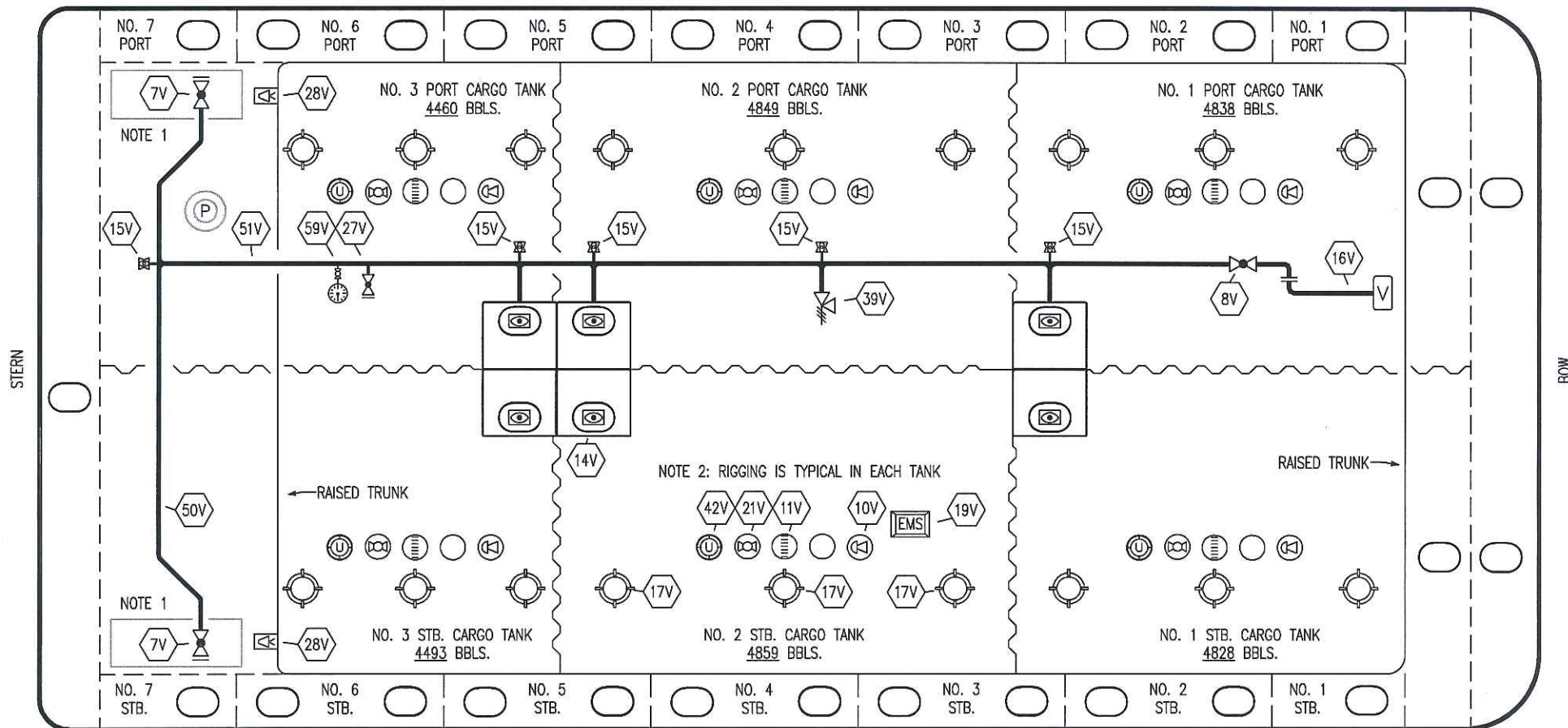
KIRBY 28185

PAGE: 1 OF 3

REV. **3**

TRINITY

PORT



NO	DESCRIPTION	NO	DESCRIPTION
7V	8" HEADER VALVE	21V	2" HERMETIC GAUGE
8V	8" VENT STACK VALVE	27V	1/4" TEST CONNECTION VALVE
10V	8" HIGH LEVEL/OVERFILL ALARM	28V	DOCK CONNECTION ALARM
11V	8" 1-METER STICK GAUGE	39V	PRESS/VAC RELIEF VALVE
14V	6" SIGHT GLASS W/GAUGE TREE	42V	8" ULLAGE HATCH
15V	2" INSPECTION PORT	50V	8" VAPOR HEADER
16V	8" VAPOR VENT STACK	51V	8" VAPOR PIPELINE
17V	14" BUTTERWORTH	59V	PRESS/VAC GAUGE
18V	2" RESTRICTIVE GAUGE TUBE	—	ABOVE DECK PIPING
19V	EMERGENCY ENGINE SHUT DOWN		

STARBOARD

NOTE 1: CONTAINMENT P/S
NOTE 2: RIGGING IS TYPICAL IN EACH TANK

TRINITY

REV.	DATE	BY	CHK	APP	REVISION DESCRIPTION
1	07/06/18	WFB	DDA		REVISED PER CLIENT COMMENTS
0	03/07/12	DCB	DDA		ISSUED FOR APPROVAL

KIRBY INLAND MARINE 

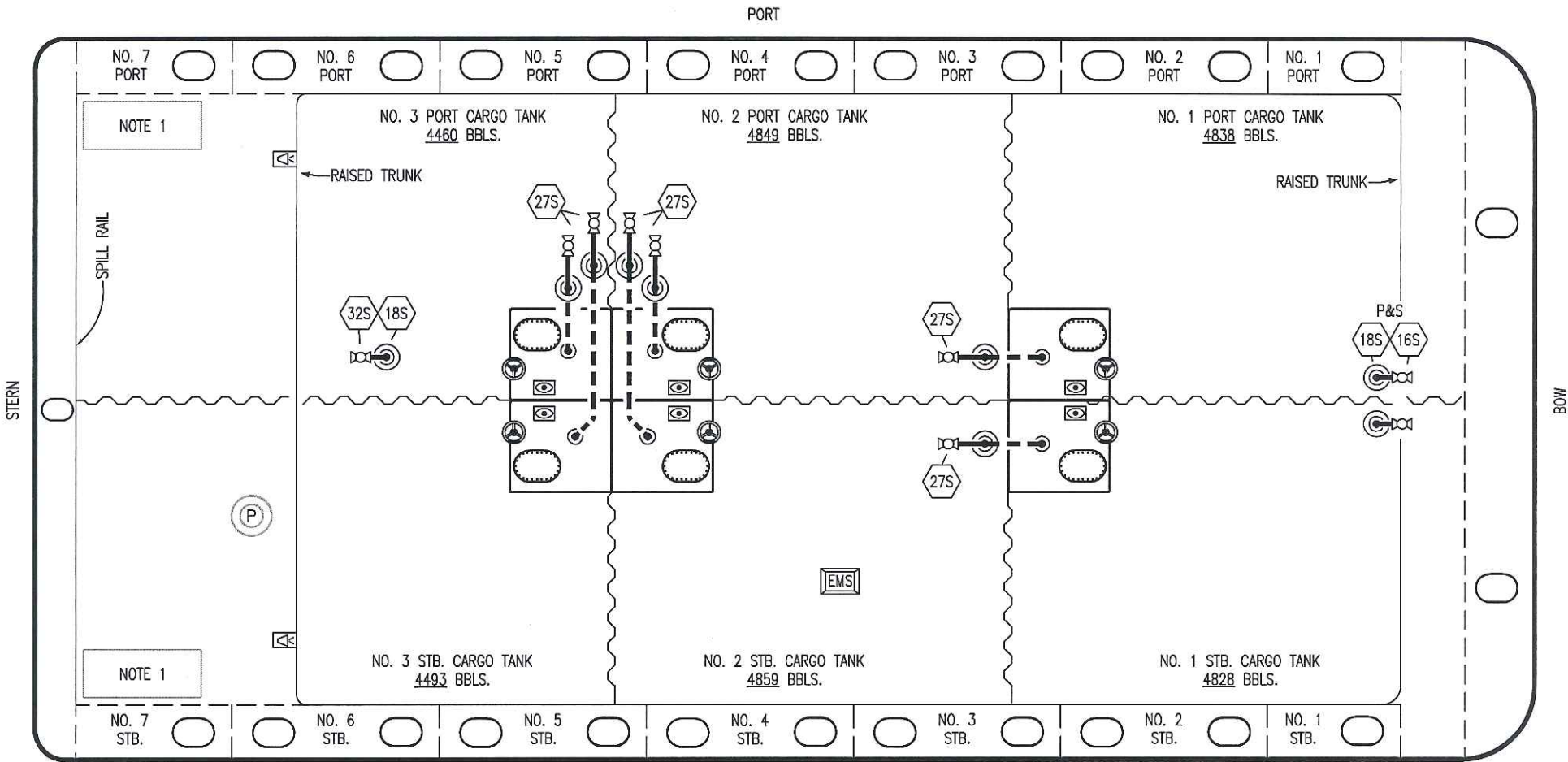
VAPOR PIPING FLOW DIAGRAM

SCALE: NONE

KIRBY 28185

REV. 1

PAGE: 2 OF 3



- | | |
|-------|---------------------------|
| NO | DESCRIPTION |
| 16S | REMOTE SUCTION CONNECTION |
| 18S | TYP. STRIPPING DROP |
| 27S | SUMP SUCTION VALVE |
| — | ABOVE DECK PIPING |
| - - - | BELOW DECK PIPING |

NOTE 1: CONTAINMENT P/S

TRINITY

					KIRBY INLAND MARINE		
					STRIPPING		
					PIPING FLOW DIAGRAM		
2	11/07/13	DCB	DDA		REVISED PIPING		
1	03/01/11	DCB	DDA		REVISED CARGO CAPACITY		
0	10/14/11	JN	DDA		ISSUED FOR APPROVAL		
REV.	DATE	BY	CHK	APP	REVISION DESCRIPTION	SCALE: NONE	KIRBY 28185
						PAGE: 3 OF 3	