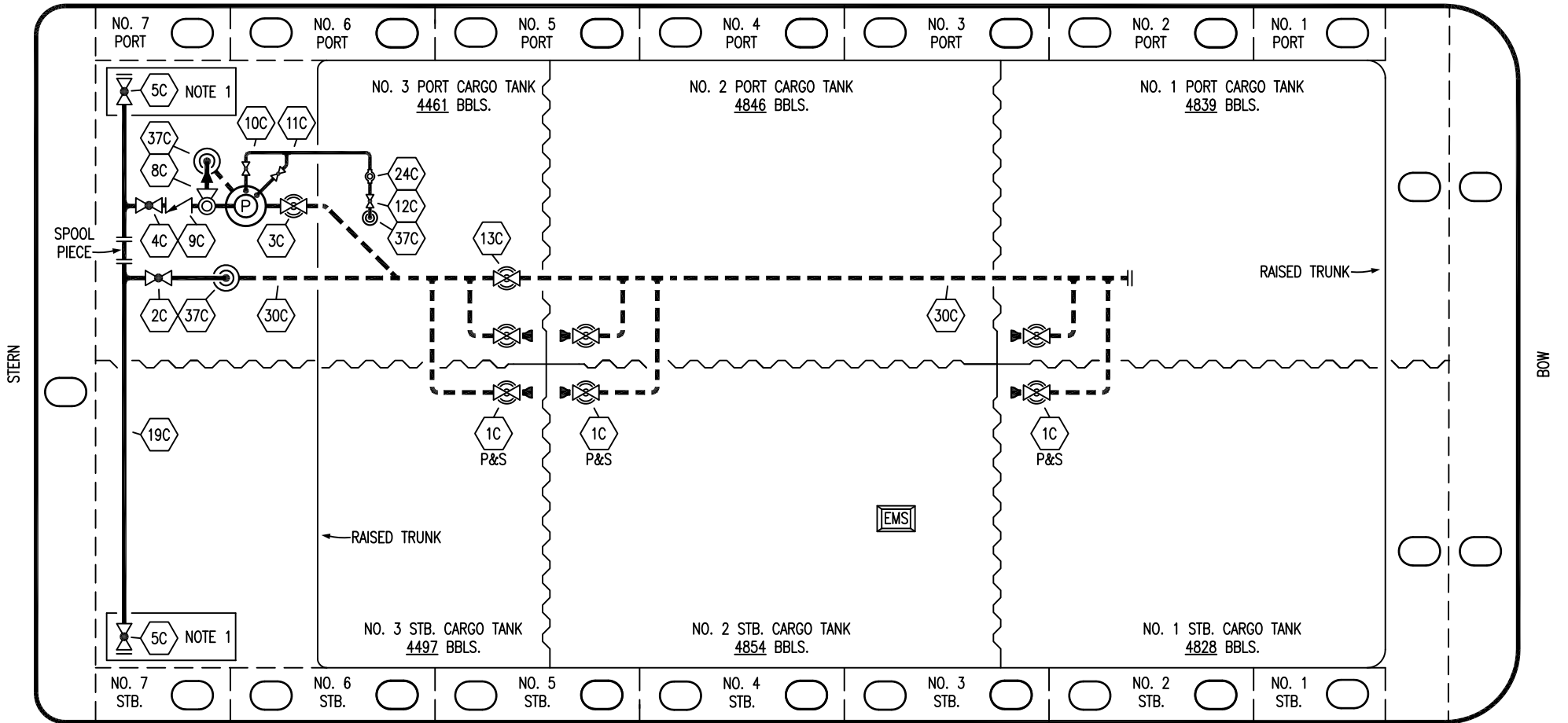


PORT



STARBOARD

- |     |                      |     |                                 |
|-----|----------------------|-----|---------------------------------|
| NO  | DESCRIPTION          | NO  | DESCRIPTION                     |
| 1C  | CARGO TANK VALVE     | 12C | BURP VALVE RETURN TO CARGO TANK |
| 2C  | LOAD VALVE           | 13C | CARGO PIPING BLOCK VALVE        |
| 3C  | MASTER SUCTION VALVE | 19C | CARGO HEADER                    |
| 4C  | DISCHARGE VALVE      | 24C | FLOW INDICATOR                  |
| 5C  | HEADER VALVE         | 30C | CARGO PIPELINE                  |
| 8C  | RELIEF VALVE         | 37C | CARGO DROP                      |
| 9C  | CHECK VALVE          | —   | — ABOVE DECK PIPING             |
| 10C | BURP VALVE           | --- | --- BELOW DECK PIPING           |
| 11C | BLEED OFF VALVE      |     |                                 |

NOTE 1: CONTAINMENT P/S

REV.	DATE	BY	CHK	APP	REVISION DESCRIPTION
3	05/24/17	WFB	DDA		REVISED PER CLIENT COMMENTS
2	11/07/13	DCB	DDA		MOVED 13C
1	03/08/11	DCB	DDA		REVISED TANK CAPACITY
0	01/07/11	BAG	RB	OF	APPROVED

KIRBY INLAND MARINE 

**CARGO  
PIPING FLOW DIAGRAM**

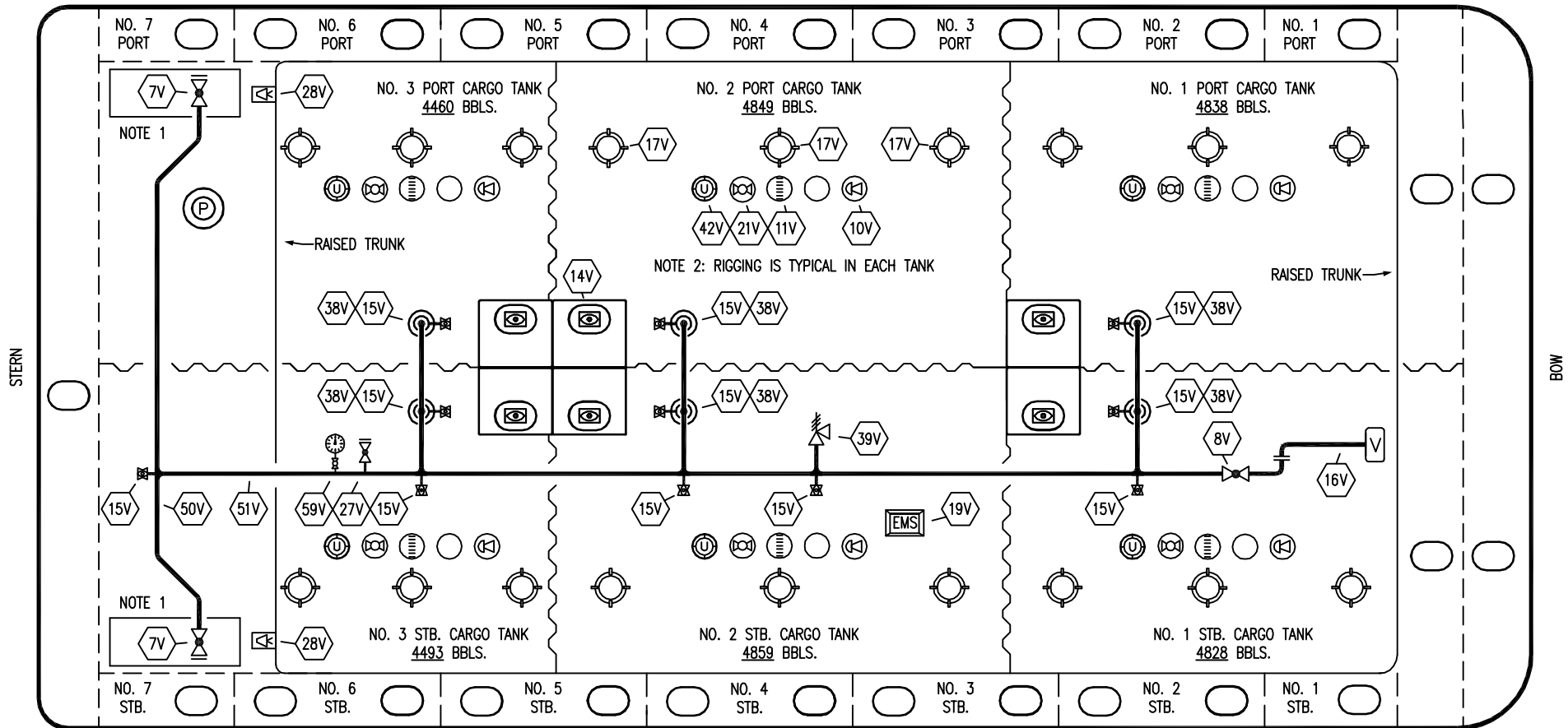
SCALE: NONE  
PAGE: 1 OF 3

**KIRBY 28184**

REV. **3**

TRINITY

PORT



STARBOARD

NO	DESCRIPTION	NO	DESCRIPTION
7V	8" HEADER VALVE	21V	2" HERMETIC GAUGE
8V	8" VENT STACK VALVE	27V	1/4" TEST CONNECTION VALVE
10V	8" HIGH LEVEL/OVERFILL ALARM	28V	DOCK CONNECTION ALARM
11V	8" 1-METER STICK GAUGE	38V	8" VAPOR PENETRATION
14V	6" SIGHT GLASS W/GAUGE TREE	39V	PRESS/VAC RELIEF VALVE
15V	2" INSPECTION PORT	42V	8" ULLAGE HATCH
16V	8" VAPOR VENT STACK	50V	8" VAPOR HEADER
17V	14" BUTTERWORTH	51V	8" VAPOR PIPELINE
18V	2" RESTRICTIVE GAUGE TUBE	59V	PRESS/VAC GAUGE
19V	EMERGENCY ENGINE SHUT DOWN	—	— ABOVE DECK PIPING

NOTE 1: CONTAINMENT P/S

NOTE 2: RIGGING IS TYPICAL IN EACH TANK

TRINITY

REV.	DATE	BY	CHK	APP	REVISION DESCRIPTION
0	03/07/12	DCB	DDA		ISSUED FOR APPROVAL

KIRBY INLAND MARINE 

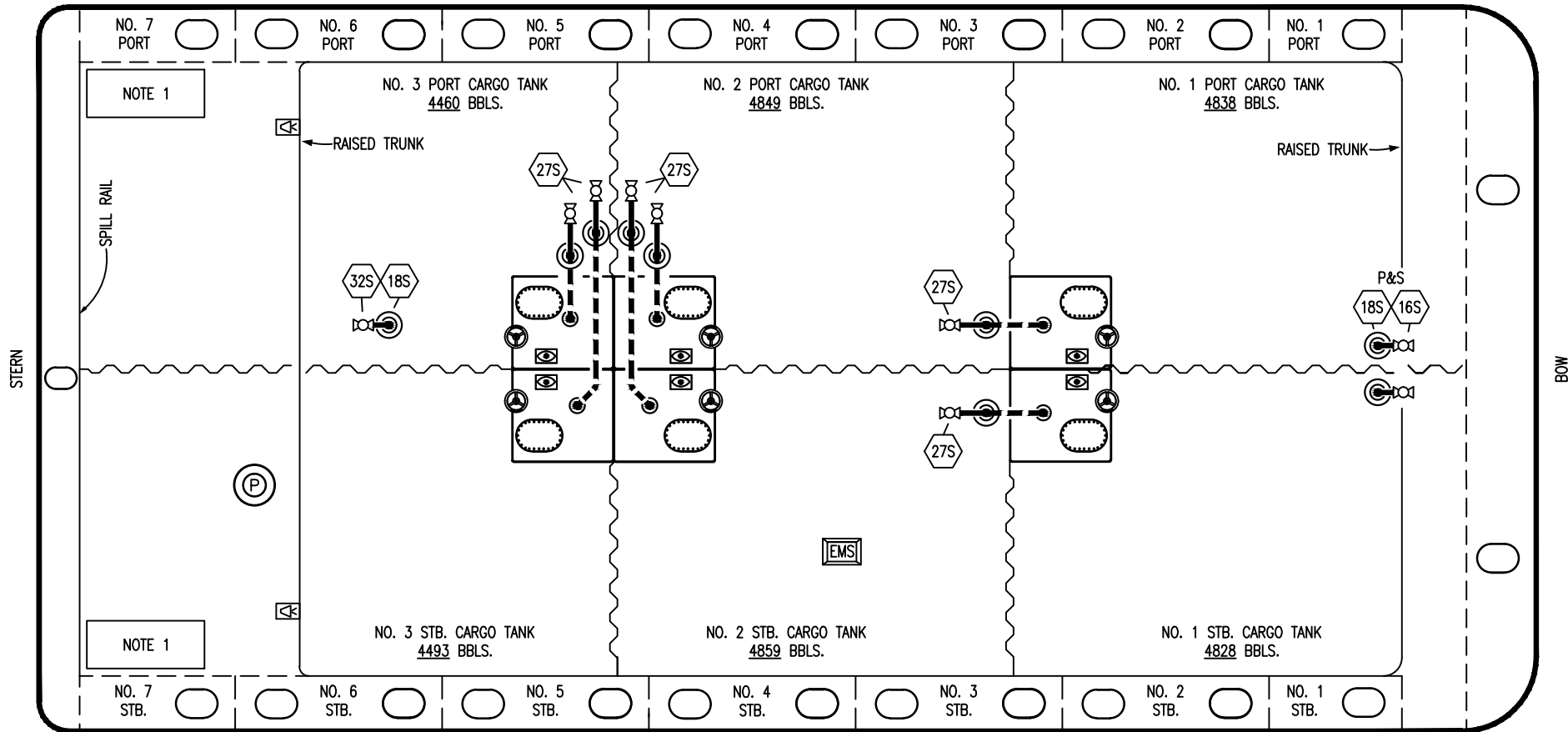
**VAPOR  
PIPING FLOW DIAGRAM**

SCALE: NONE  
PAGE: 2 OF 3

**KIRBY 28184**

REV. **0**


PORT



- | NO    | DESCRIPTION               |
|-------|---------------------------|
| 16S   | REMOTE SUCTION CONNECTION |
| 18S   | TYP. STRIPPING DROP       |
| 27S   | SUMP SUCTION VALVE        |
| —     | ABOVE DECK PIPING         |
| - - - | BELOW DECK PIPING         |

NOTE 1: CONTAINMENT P/S

TRINITY

						<b>KIRBY INLAND MARINE</b> 							
								<b>STRIPPING</b>					
												<b>PIPING FLOW DIAGRAM</b>	
												<b>KIRBY 28184</b>	
2	11/07/13	DCB	DDA		REVISED PIPING	SCALE: NONE	<b>REV. 2</b>						
1	03/01/11	DCB	DDA		REVISED CARGO CAPACITY								
0	10/14/11	JN	DDA		ISSUED FOR APPROVAL								
REV.	DATE	BY	CHK	APP	REVISION DESCRIPTION	PAGE: 3 OF 3							