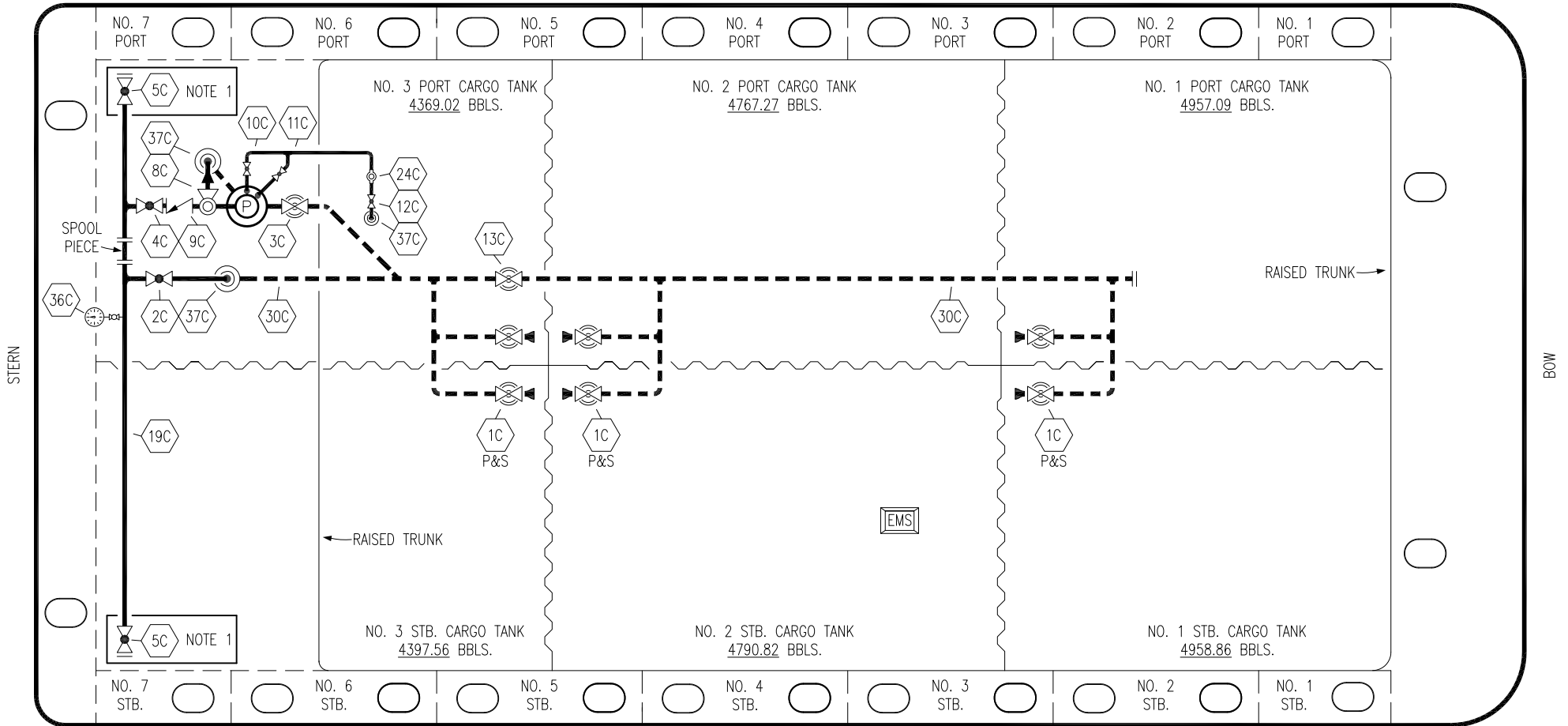


PORT



STARBOARD

NO	DESCRIPTION	NO	DESCRIPTION
1C	CARGO TANK VALVE	12C	BURP VALVE RETURN TO CARGO TANK
2C	LOAD VALVE	13C	CARGO PIPING BLOCK VALVE
3C	MASTER SUCTION VALVE	19C	CARGO HEADER
4C	DISCHARGE VALVE	24C	FLOW INDICATOR
5C	HEADER VALVE	30C	CARGO PIPELINE
8C	RELIEF VALVE	36C	PRESSURE GAUGE
9C	CHECK VALVE	37C	CARGO DROP
10C	BURP VALVE	—	— ABOVE DECK PIPING
11C	BLEED OFF VALVE	- - -	- - - BELOW DECK PIPING

NOTE 1: CONTAINMENT P/S

TRINITY

REV.	DATE	BY	CHK	APP	REVISION DESCRIPTION
4	05/09/22	MRV	DDA	JF	REVISED PER CLIENT COMMENTS
3	06/19/17	WFB	DDA		REMOVED 6C SALVAGE VALVE
2	11/07/13	DCB	DDA		MOVED 13C
1	03/08/11	DCB	DDA		REVISED TANK CAPACITY
0	01/07/11	BAG	RB	OF	APPROVED

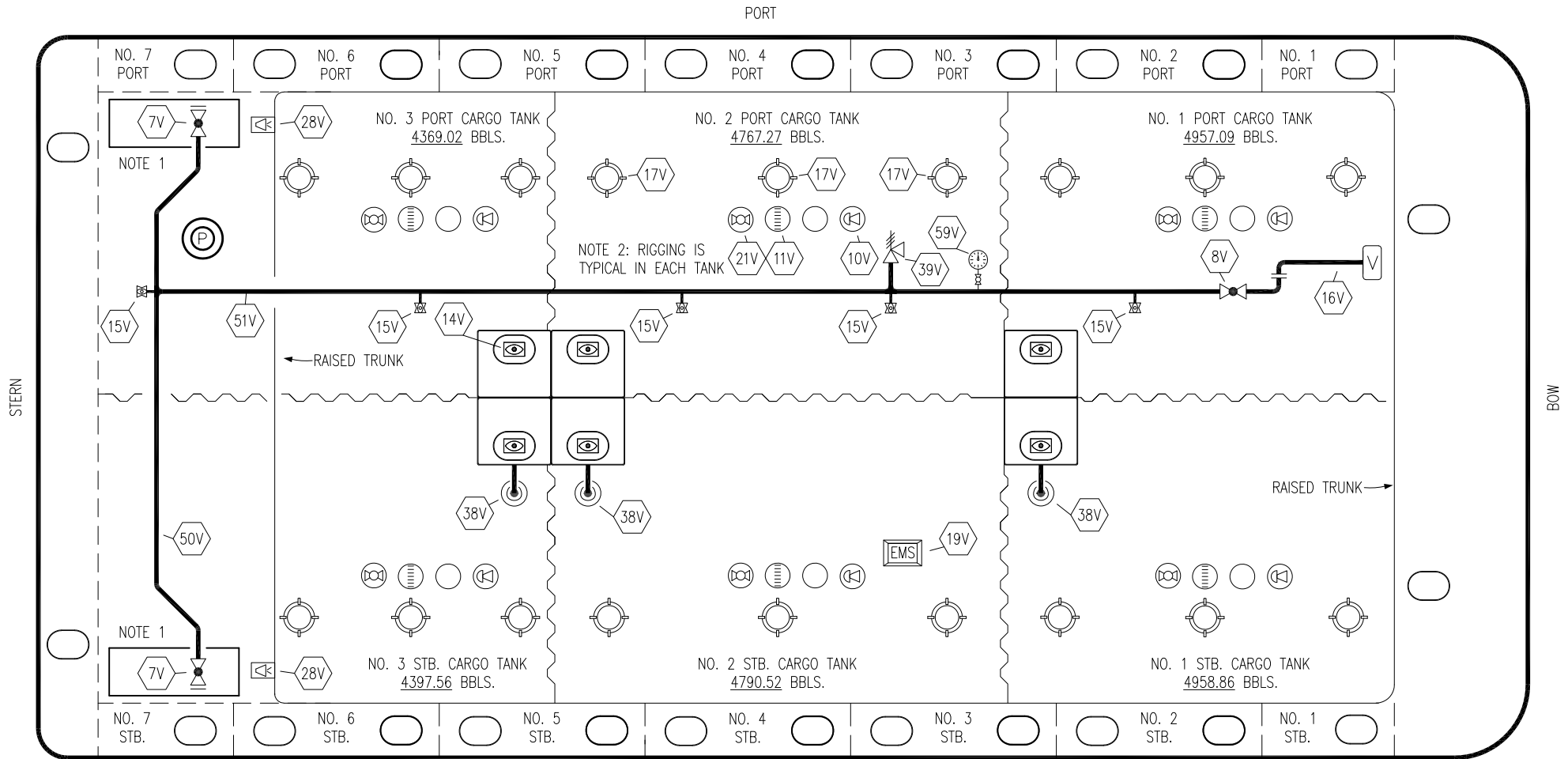
KIRBY INLAND MARINE

CARGO  
PIPING FLOW DIAGRAM

KIRBY 28183

REV. 4

SCALE: NONE  
PAGE: 1 OF 3



NO	DESCRIPTION	NO	DESCRIPTION
7V	8" HEADER VALVE	21V	2" HERMETIC GAUGE
8V	8" VENT STACK VALVE	27V	1/4" TEST CONNECTION VALVE
10V	8" HIGH LEVEL/OVERFILL ALARM	28V	DOCK CONNECTION ALARM
11V	8" 1-METER STICK GAUGE	38V	8" VAPOR PENETRATION
14V	6" SIGHT GLASS W/GAUGE TREE	39V	PRESS/VAC RELIEF VALVE
15V	2" INSPECTION PORT	50V	8" VAPOR HEADER
16V	8" VAPOR VENT STACK	51V	8" VAPOR PIPELINE
17V	14" BUTTERWORTH	59V	PRESS/VAC GAUGE
18V	2" RESTRICTIVE GAUGE TUBE	—	ABOVE DECK PIPING
19V	EMERGENCY ENGINE SHUT DOWN		

NOTE 1: CONTAINMENT P/S

NOTE 2: RIGGING IS TYPICAL IN EACH TANK

REV.	DATE	BY	CHK	APP	REVISION DESCRIPTION
1	05/09/22	MRV	DDA	JF	REVISED PER CLIENT COMMENTS
0	03/07/12	DCB	DDA	OF	APPROVED

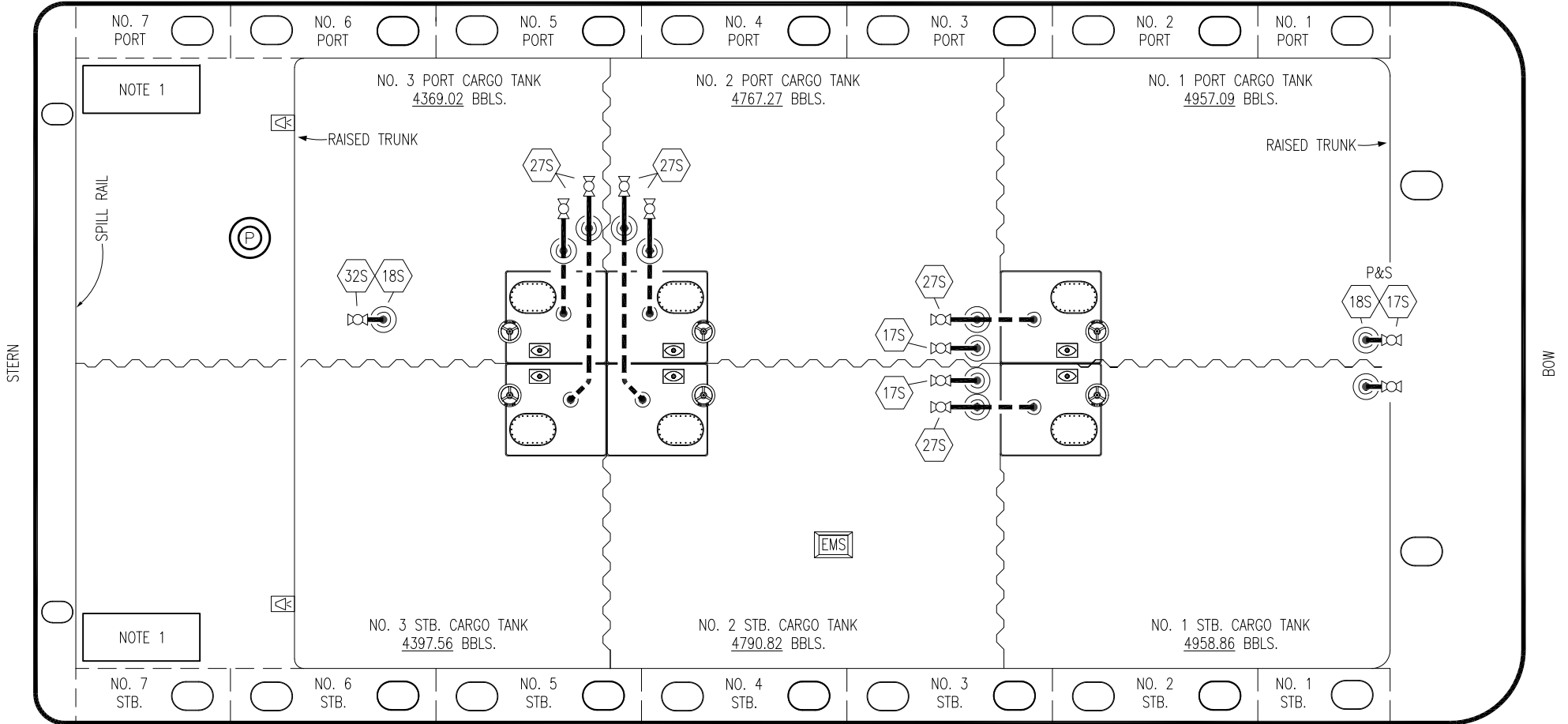
TRINITY




**KIRBY INLAND MARINE**

**VAPOR  
PIPING FLOW DIAGRAM**

SCALE: NONE	<b>KIRBY 28183</b>	REV. 1
PAGE: 2 OF 3		


PORT



- | NO  | DESCRIPTION   |
|---|---|
| 17S   | FORWARD TANK STRIPPING  |
| 18S   | TYP. STRIPPING DROP  |
| 27S   | SUMP SUCTION VALVE  |
| 32S   | PUMP WELL PRIMER VALVE  |
|  | ABOVE DECK PIPING   |
|  | BELOW DECK PIPING   |

NOTE 1: CONTAINMENT P/S

TRINITY

						<b>KIRBY INLAND MARINE</b> 	
						<b>STRIPPING</b>	
						<b>PIPING FLOW DIAGRAM</b>	
3	05/09/22	MRV	DDA	JF	REVISED PER CLIENT COMMENTS	SCALE: NONE	<b>KIRBY 28183</b>
2	11/07/13	DCB	DDA		REVISED PIPING		
1	03/01/11	DCB	DDA		REVISED CARGO CAPACITY		
0	10/14/11	JN	DDA	OF	APPROVED		
REV.	DATE	BY	CHK	APP	REVISION DESCRIPTION	PAGE: 3 OF 3	<b>REV. 3</b>