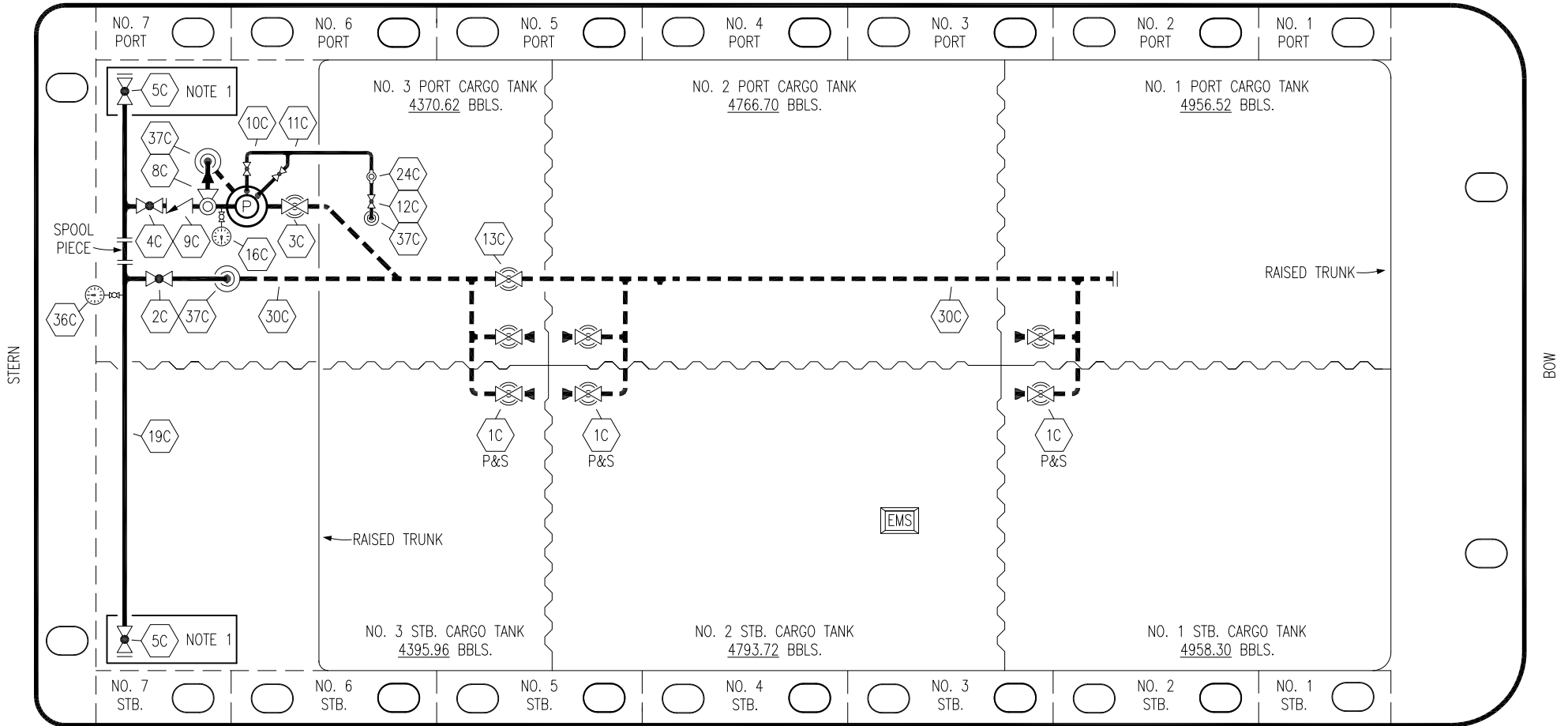


PORT



STARBOARD

- |     |                      |     |                                 |
|-----|----------------------|-----|---------------------------------|
| NO  | DESCRIPTION          | NO  | DESCRIPTION                     |
| 1C  | CARGO TANK VALVE     | 12C | BURP VALVE RETURN TO CARGO TANK |
| 2C  | LOAD VALVE           | 13C | CARGO PIPING BLOCK VALVE        |
| 3C  | MASTER SUCTION VALVE | 16C | DISCHARGE PRESSURE GAUGE        |
| 4C  | DISCHARGE VALVE      | 19C | CARGO HEADER                    |
| 5C  | HEADER VALVE         | 24C | FLOW INDICATOR                  |
| 8C  | RELIEF VALVE         | 30C | CARGO PIPELINE                  |
| 9C  | CHECK VALVE          | 36C | PRESSURE GAUGE                  |
| 10C | BURP VALVE           | 37C | CARGO DROP                      |
| 11C | BLEED OFF VALVE      |     |                                 |
|     | ABOVE DECK PIPING    |     |                                 |
|     | BELOW DECK PIPING    |     |                                 |

NOTE 1: CONTAINMENT P/S

REV.	DATE	BY	CHK	APP	REVISION DESCRIPTION
4	06/14/22	MRV	DDA	FIX	REVISED PER CLIENT COMMENTS
3	03/09/17	WFB	DDA		REVISED PER CLIENT COMMENTS
2	11/07/13	DCB	DDA		MOVED 13C
1	03/08/11	DCB	DDA		REVISED TANK CAPACITY
A	01/07/11	BAG	RB	OF	FOR APPROVAL

TRINITY

**KIRBY INLAND MARINE**

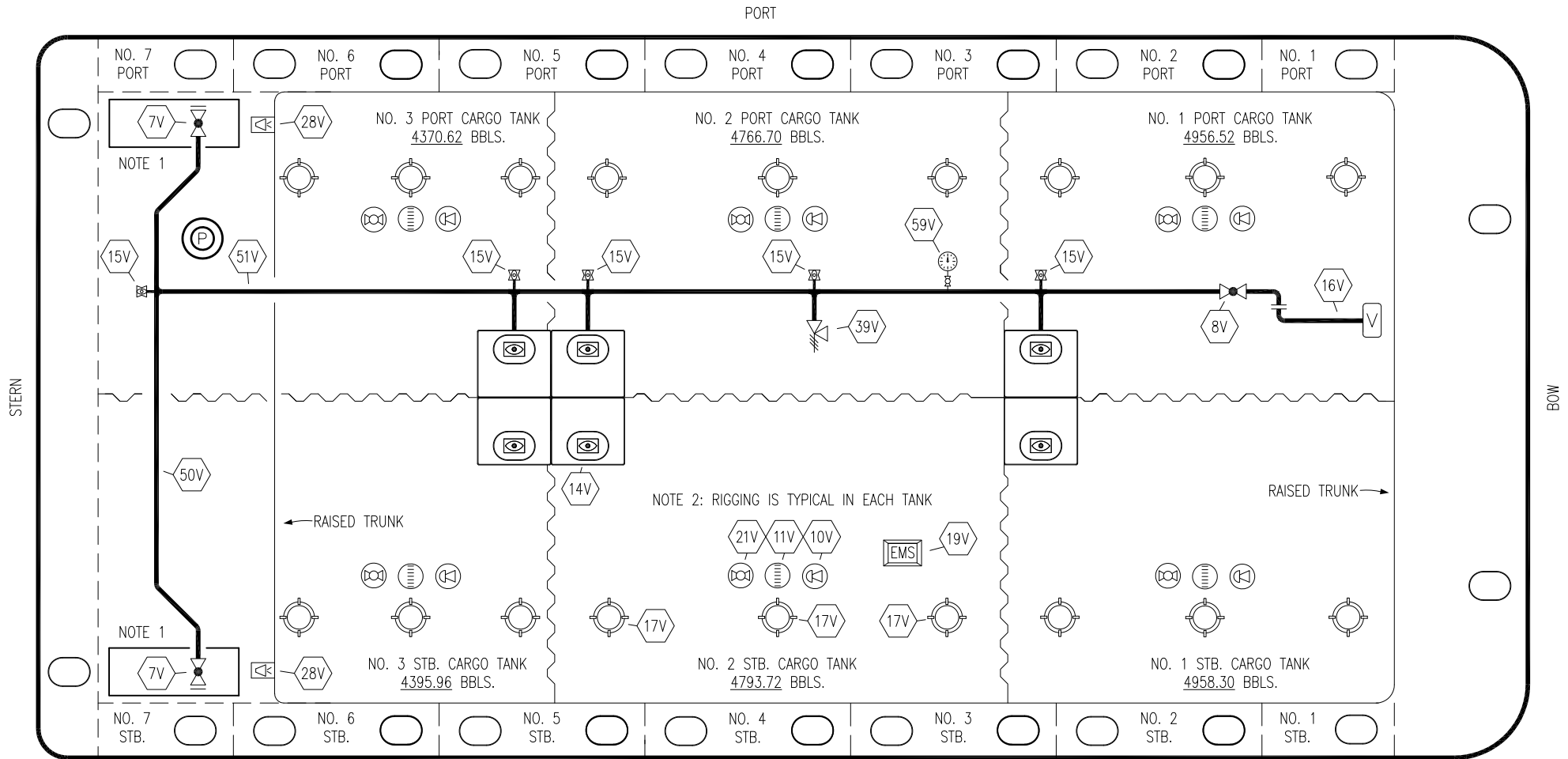
**CARGO**

**PIPING FLOW DIAGRAM**

**KIRBY 28181**

SCALE: NONE  
PAGE: 1 OF 3

REV. **4**



NO	DESCRIPTION	NO	DESCRIPTION
7V	8" HEADER VALVE	21V	2" HERMETIC GAUGE
8V	8" VENT STACK VALVE	28V	DOCK CONNECTION ALARM
10V	8" HIGH LEVEL/OVERFILL ALARM	39V	PRESS/VAC RELIEF VALVE
11V	8" 1-METER STICK GAUGE	42V	8" ULLAGE HATCH
14V	6" SIGHT GLASS W/GAUGE TREE	50V	8" VAPOR HEADER
15V	2" INSPECTION PORT	51V	8" VAPOR PIPELINE
16V	8" VAPOR VENT STACK	59V	PRESS/VAC GAUGE
17V	14" BUTTERWORTH	—	ABOVE DECK PIPING
18V	2" RESTRICTIVE GAUGE TUBE		
19V	EMERGENCY ENGINE SHUT DOWN		

NOTE 1: CONTAINMENT P/S  
 NOTE 2: RIGGING IS TYPICAL IN EACH TANK

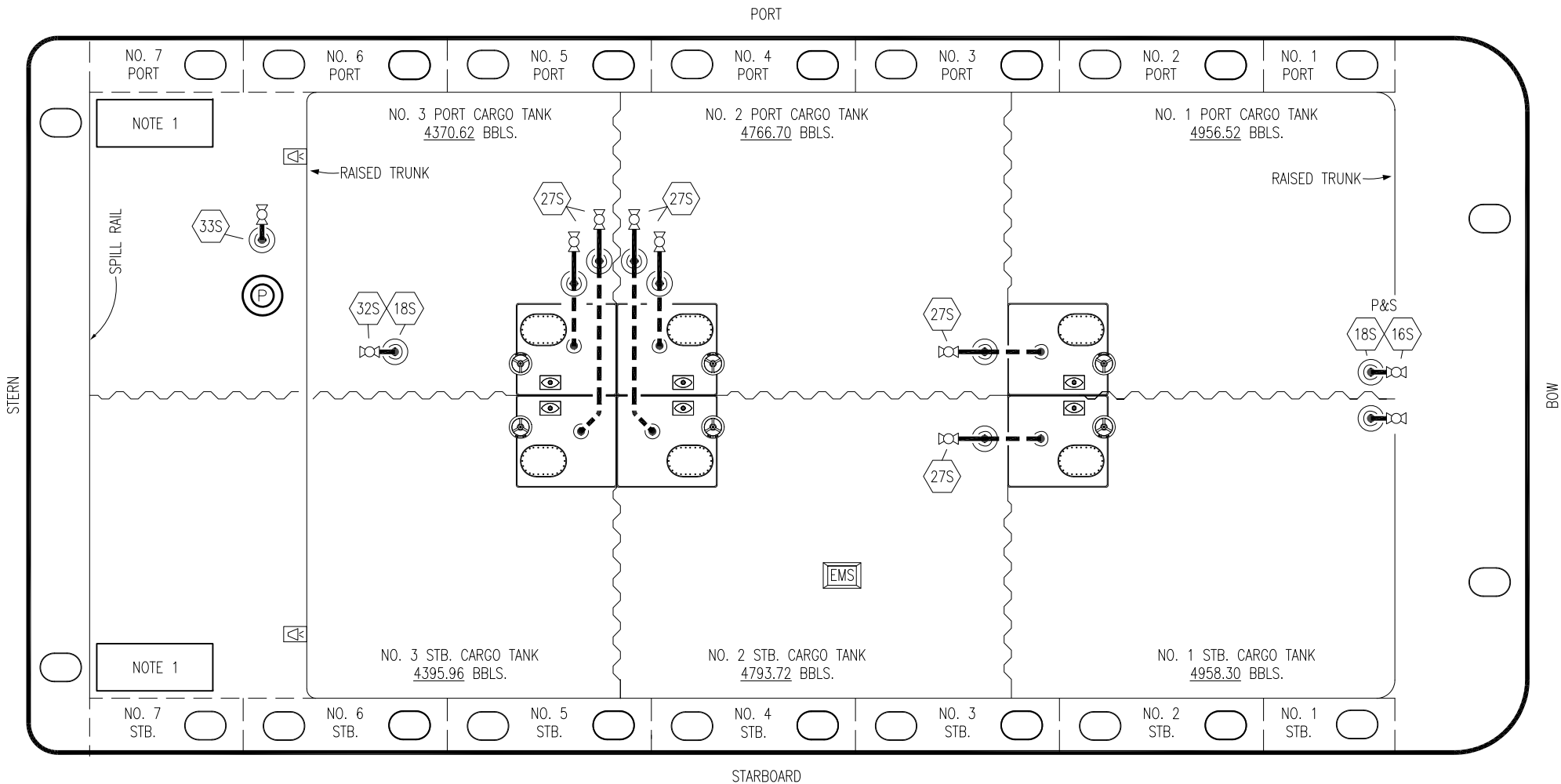
REV.	DATE	BY	CHK	APP	REVISION DESCRIPTION
2	06/14/22	MRV	DDA	FIX	REVISED PER CLIENT COMMENTS
1	07/06/18	WFB	DDA		REVISED PER CLIENT COMMENTS
0	03/07/12	DCB	DDA		ISSUED FOR APPROVAL

TRINITY

**KIRBY INLAND MARINE**

**VAPOR  
PIPING FLOW DIAGRAM**

SCALE: NONE	<b>KIRBY 28181</b>	REV. 2
PAGE: 2 OF 3		



- | NO    | DESCRIPTION               |
|-------|---------------------------|
| 16S   | REMOTE SUCTION CONNECTION |
| 18S   | TYP. STRIPPING DROP       |
| 27S   | SUMP SUCTION VALVE        |
| 33S   | DEEP WELL SUMP            |
| —     | ABOVE DECK PIPING         |
| - - - | BELOW DECK PIPING         |

NOTE 1: CONTAINMENT P/S

REV.	DATE	BY	CHK	APP	REVISION DESCRIPTION
3	06/14/22	MRV	DDA	FIX	REVISED PER CLIENT COMMENTS
2	11/07/13	DCB	DDA		REVISED PIPING
1	03/01/11	DCB	DDA		REVISED CARGO CAPACITY
0	10/14/11	JN	DDA		ISSUED FOR APPROVAL

TRINITY

**KIRBY INLAND MARINE**

**STRIPPING  
PIPING FLOW DIAGRAM**

SCALE: NONE	<b>KIRBY 28181</b>	REV. 3
PAGE: 3 OF 3		<b>3</b>