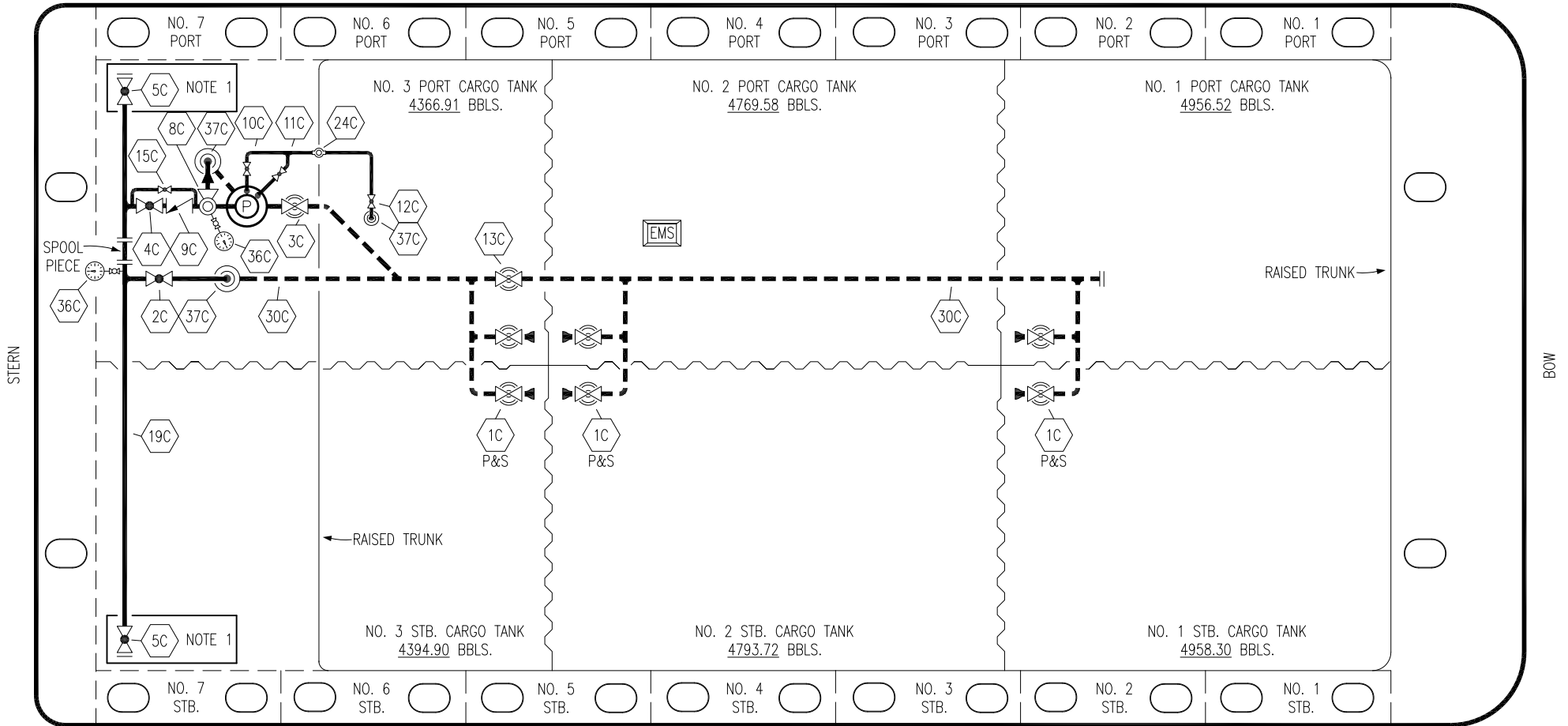


PORT



STARBOARD

- | | | | |
|-----|----------------------|-----|---------------------------------|
| NO | DESCRIPTION | NO | DESCRIPTION |
| 1C | CARGO TANK VALVE | 12C | BURP VALVE RETURN TO CARGO TANK |
| 2C | LOAD VALVE | 13C | CARGO PIPING BLOCK VALVE |
| 3C | MASTER SUCTION VALVE | 15C | BYPASS VALVE AROUND CHECK |
| 4C | DISCHARGE VALVE | 19C | CARGO HEADER |
| 5C | HEADER VALVE | 24C | FLOW INDICATOR |
| 8C | RELIEF VALVE | 30C | CARGO PIPELINE |
| 9C | CHECK VALVE | 36C | PRESSURE GAUGE |
| 10C | BURP VALVE | 37C | CARGO DROP |
| 11C | BLEED OFF VALVE | | |
| | ABOVE DECK PIPING | | |
| | BELOW DECK PIPING | | |

NOTE 1: CONTAINMENT P/S

REV.	DATE	BY	CHK	APP	REVISION DESCRIPTION
4	01/19/22	MRV	DDA	CW	REVISED PER CLIENT COMMENTS
3	01/18/17	WFB	DDA		REVISED PER CLIENT COMMENTS
2	11/07/13	DCB	DDA		MOVED 13C
1	03/08/11	DCB	DDA		REVISED TANK CAPACITY
A	01/07/11	BAG	RB	OF	FOR APPROVAL

TRINITY

KIRBY INLAND MARINE

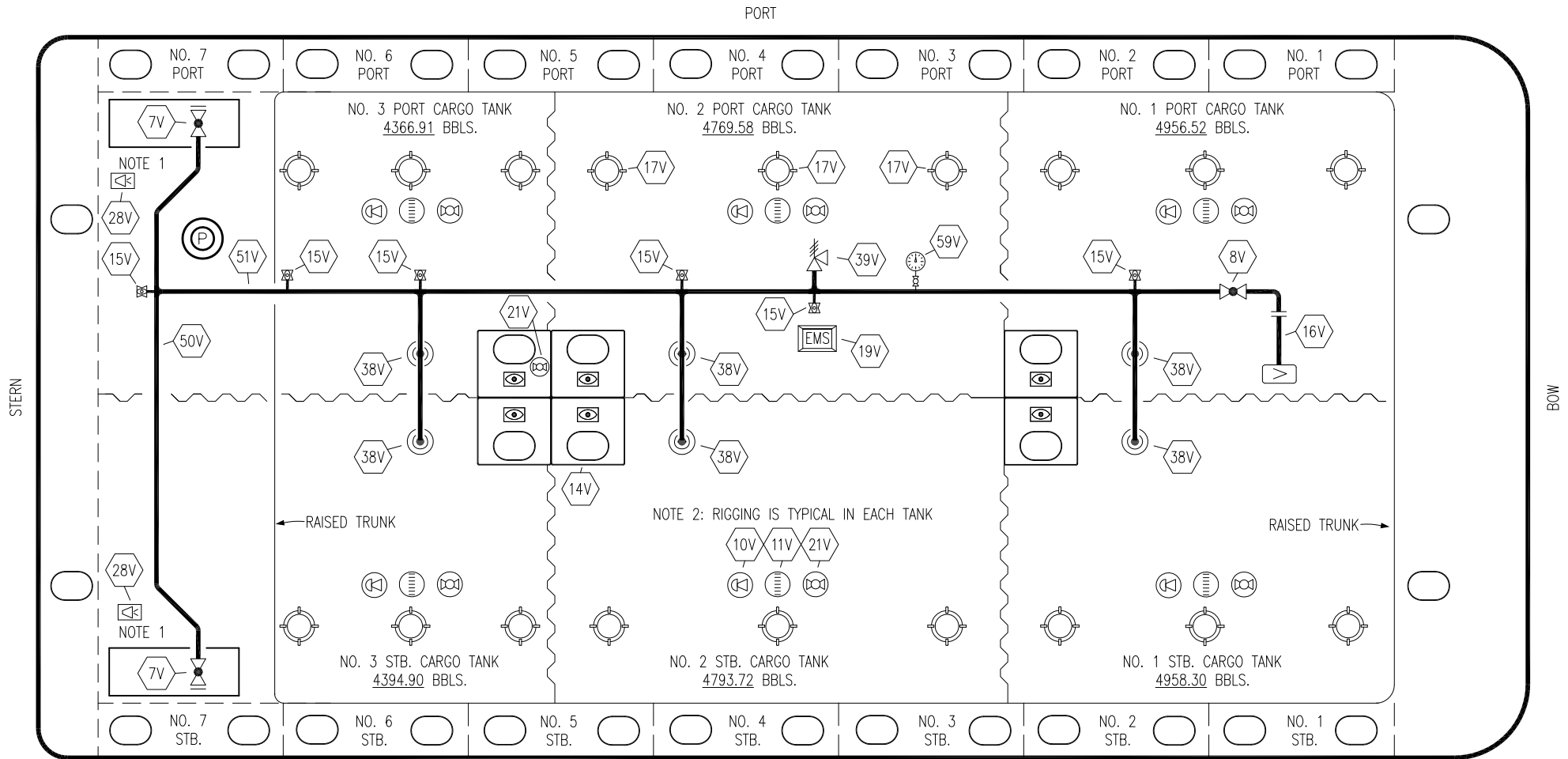
CARGO

PIPING FLOW DIAGRAM

KIRBY 28180

SCALE: NONE
PAGE: 1 OF 3

REV. **4**



NO	DESCRIPTION	NO	DESCRIPTION
7V	8" HEADER VALVE	21V	2" HERMETIC GAUGE
8V	8" VENT STACK VALVE	28V	DOCK CONNECTION ALARM
10V	8" HIGH LEVEL/OVERFILL ALARM	38V	8" VAPOR PENETRATION
11V	8" 1-METER STICK GAUGE	39V	PRESS/VAC RELIEF VALVE
14V	8" SIGHT GLASS W/GAUGE TREE	50V	8" VAPOR HEADER
15V	2" INSPECTION PORT	51V	8" VAPOR PIPELINE
16V	8" VAPOR VENT STACK	59V	PRESS/VAC GAUGE
17V	20" BUTTERWORTH		ABOVE DECK PIPING
19V	EMERGENCY ENGINE SHUT DOWN		

NOTE 1: CONTAINMENT P/S
 NOTE 2: RIGGING IS TYPICAL IN EACH TANK

REV.	DATE	BY	CHK	APP	REVISION DESCRIPTION
1	01/19/22	MRV	DDA	CW	REVISED PER CLIENT COMMENTS
0	10/14/11	JN	DDA		ISSUED FOR APPROVAL

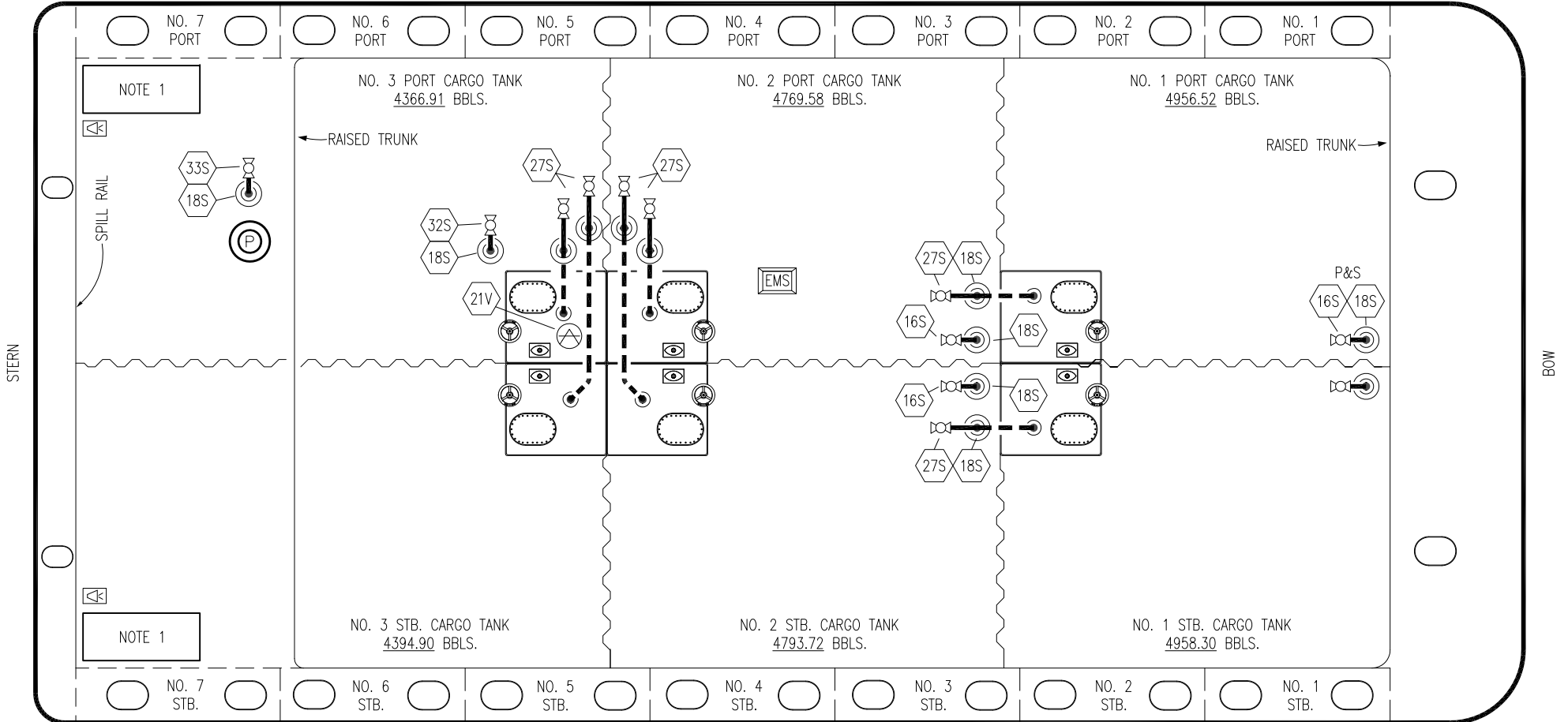
TRINITY

KIRBY INLAND MARINE

**VAPOR
PIPING FLOW DIAGRAM**

SCALE: NONE	KIRBY 28180	REV. 1
PAGE: 2 OF 3		

PORT



- | NO | DESCRIPTION |
|-----|---|
| 16S | CARGO TANK FWD SUCTION |
| 18S | TYP. STRIPPING DROP |
| 21V | HERMETIC GAUGE |
| 27S | SUMP SUCTION VALVE |
| 32S | BELOW DECK CARGO PIPELINE SUCTION STRIPPING |
| 33S | DEEPWELL CAN STRIPPING VALVE |
| | ABOVE DECK PIPING |
| | BELOW DECK PIPING |

NOTE 1: CONTAINMENT P/S

TRINITY

REV.	DATE	BY	CHK	APP	REVISION DESCRIPTION
3	01/19/22	MRV	DDA	CW	REVISED PER CLIENT COMMENTS
2	11/07/13	DCB	DDA		REVISED PIPING
1	03/01/11	DCB	DDA		REVISED CARGO CAPACITY
0	10/14/11	JN	DDA		ISSUED FOR APPROVAL



KIRBY INLAND MARINE

STRIPPING

PIPING FLOW DIAGRAM

KIRBY 28180

SCALE: NONE	REV. 3
PAGE: 3 OF 3	