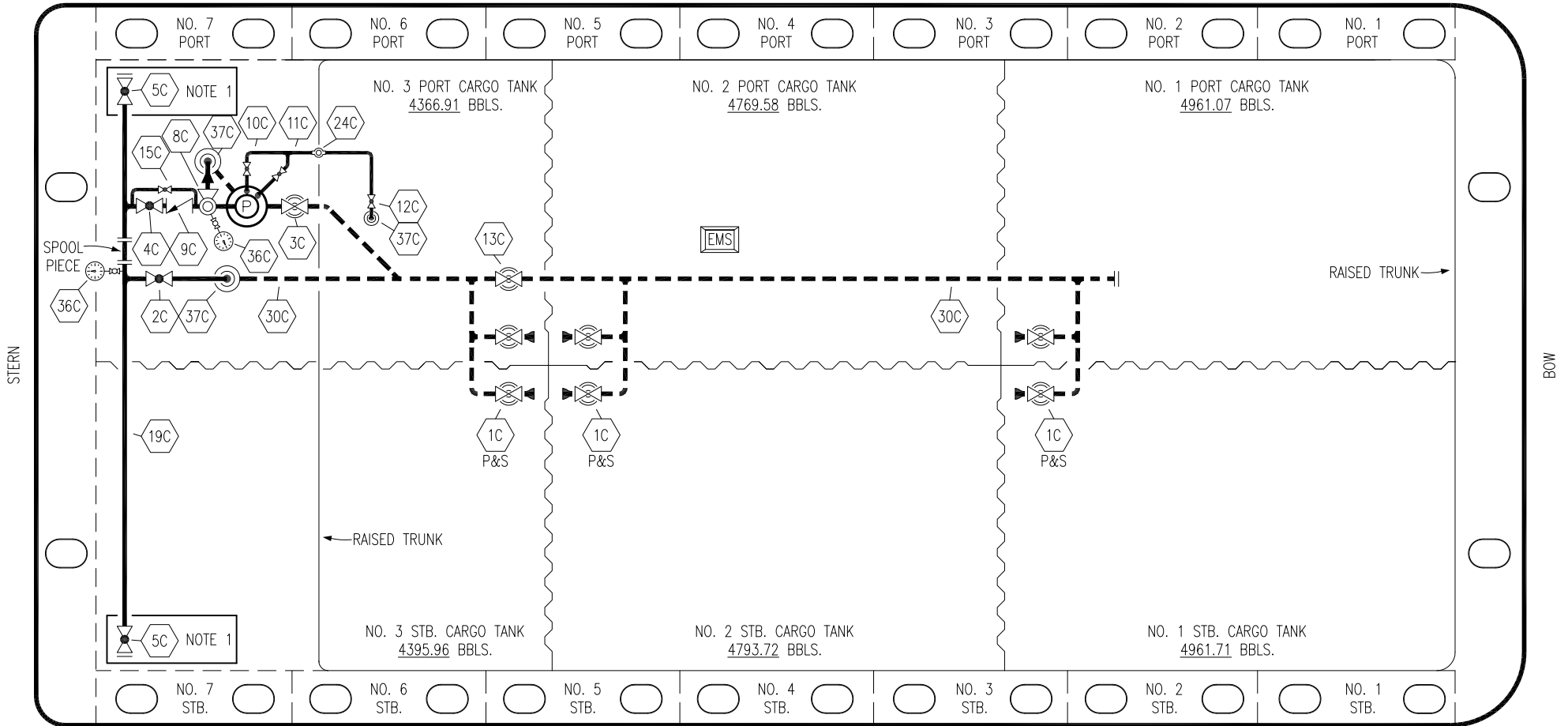


PORT



STARBOARD

- |     |                      |     |                                 |
|-----|----------------------|-----|---------------------------------|
| NO  | DESCRIPTION          | NO  | DESCRIPTION                     |
| 1C  | CARGO TANK VALVE     | 12C | BURP VALVE RETURN TO CARGO TANK |
| 2C  | LOAD VALVE           | 13C | CARGO PIPING BLOCK VALVE        |
| 3C  | MASTER SUCTION VALVE | 15C | BYPASS VALVE AROUND CHECK       |
| 4C  | DISCHARGE VALVE      | 19C | CARGO HEADER                    |
| 5C  | HEADER VALVE         | 24C | FLOW INDICATOR                  |
| 8C  | RELIEF VALVE         | 30C | CARGO PIPELINE                  |
| 9C  | CHECK VALVE          | 36C | PRESSURE GAUGE                  |
| 10C | BURP VALVE           | 37C | CARGO DROP                      |
| 11C | BLEED OFF VALVE      |     |                                 |
- ABOVE DECK PIPING  
 - - - - - BELOW DECK PIPING

NOTE 1: CONTAINMENT P/S

TRINITY

REV.	DATE	BY	CHK	APP	REVISION DESCRIPTION
4	01/19/22	MRV	DDA	CW	REVISED PER CLIENT COMMENTS
3	02/22/17	WFB	DDA		REVISED PER CLIENT COMMENTS
2	11/07/13	DCB	DDA		MOVED 13C
1	03/08/11	DCB	DDA		REVISED TANK CAPACITY
A	01/07/11	BAG	RB	OF	FOR APPROVAL

KIRBY INLAND MARINE

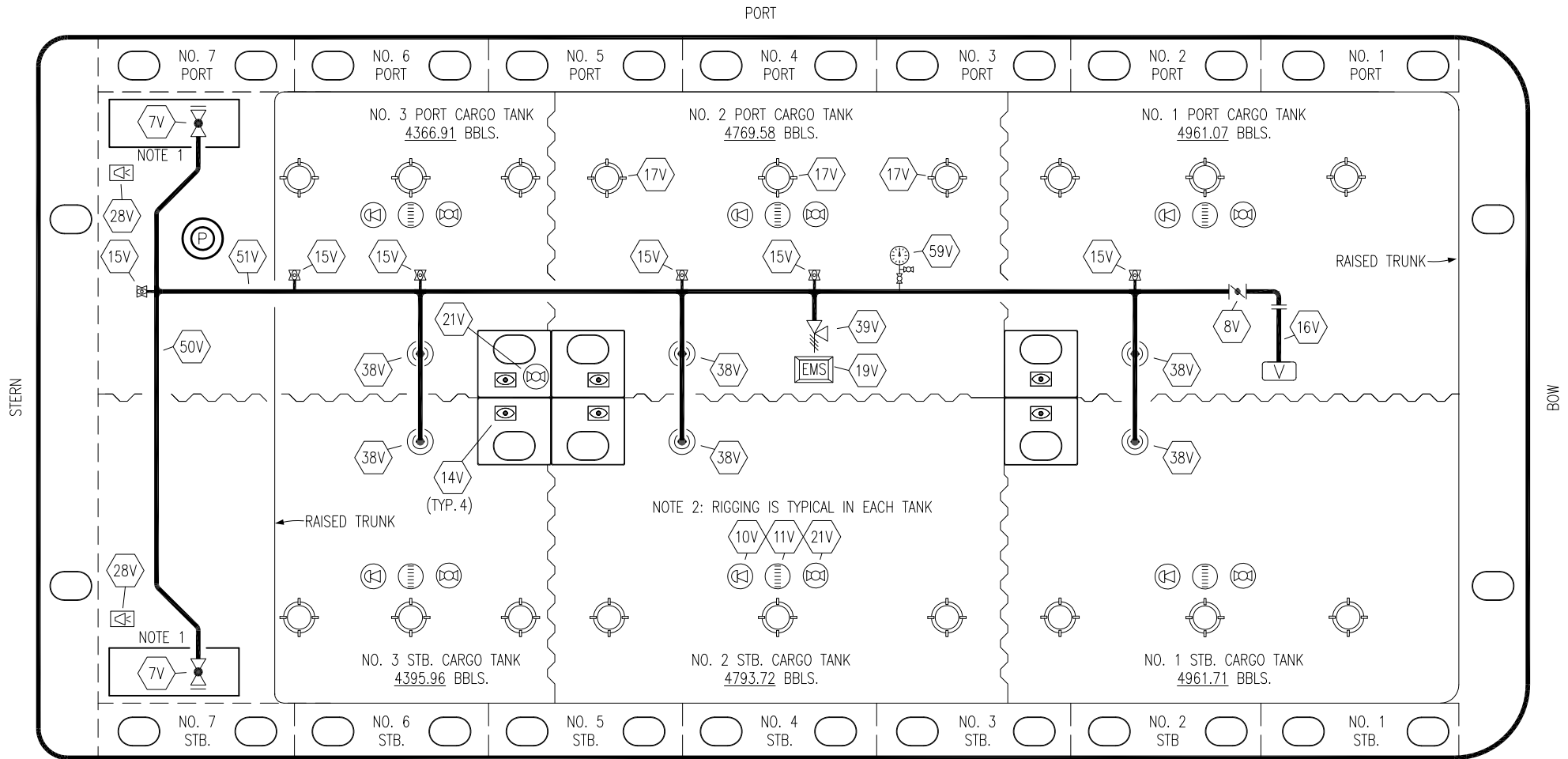
**CARGO**  
**PIPING FLOW DIAGRAM**

SCALE: NONE

**KIRBY 28179**

PAGE: 1 OF 3

**REV. 4**



NO	DESCRIPTION	NO	DESCRIPTION
7V	8" HEADER VALVE	21V	2" HERMETIC GAUGE
8V	8" VENT STACK VALVE	28V	DOCK CONNECTION ALARM
10V	8" HIGH LEVEL/OVERFILL ALARM	38V	8" VAPOR PENETRATION
11V	8" 1-METER STICK GAUGE	39V	PRESS/VAC RELIEF VALVE
14V	6" SIGHT GLASS W/GAUGE TREE	50V	8" VAPOR HEADER
15V	2" INSPECTION PORT	51V	8" VAPOR PIPELINE
16V	8" VAPOR VENT STACK	59V	PRESS/VAC GAUGE
17V	14" BUTTERWORTH		ABOVE DECK PIPING
19V	EMERGENCY ENGINE SHUT DOWN		

STARBOARD

NOTE 1: CONTAINMENT P/S

NOTE 2: RIGGING IS TYPICAL IN EACH TANK

REV.	DATE	BY	CHK	APP	REVISION DESCRIPTION
1	01/19/22	MRV	DDA	CW	REVISED PER CLIENT COMMENTS
0	10/14/11	JN	DDA		ISSUED FOR APPROVAL

TRINITY

**KIRBY INLAND MARINE**

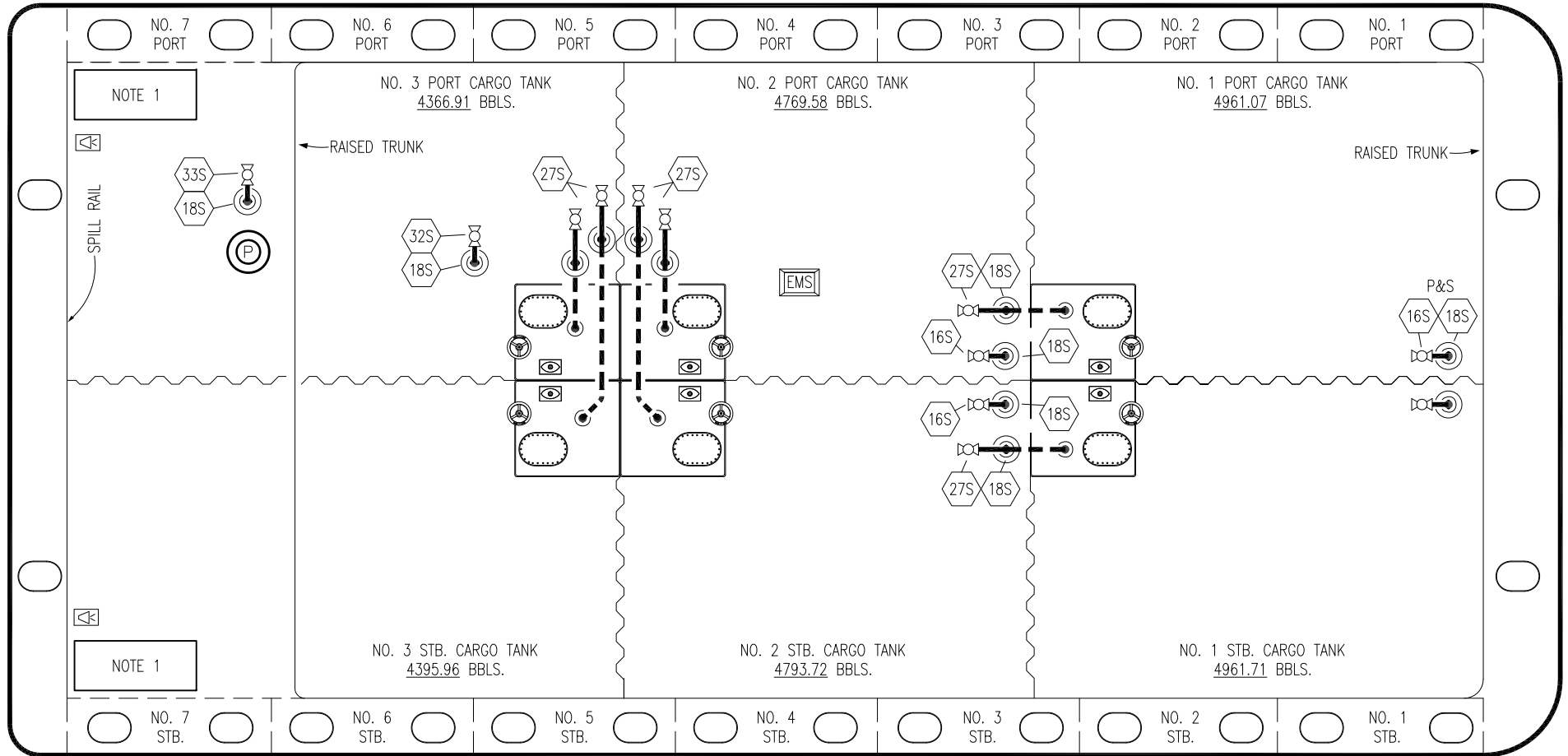
**VAPOR  
PIPING FLOW DIAGRAM**

SCALE: NONE	<b>KIRBY 28179</b>	REV. 1
PAGE: 2 OF 3		

PORT

STERN

BOW



NO	DESCRIPTION
16S	LOWER TANK SUCTION
18S	TYP. STRIPPING DROP
21V	HERMETIC GAUGE
27S	SUMP SUCTION VALVE
32S	BELOW DECK CARGO PIPELINE SUCTION STRIPPING
33S	DEEPWELL CAN STRIPPING VALVE
—	ABOVE DECK PIPING
- - -	BELOW DECK PIPING

NOTE 1: CONTAINMENT P/S

TRINITY

REV.	DATE	BY	CHK	APP	REVISION DESCRIPTION
3	01/19/22	MRV	DDA	CW	REVISED PER CLIENT COMMENTS
2	11/07/13	DCB	DDA		REVISED PIPING
1	03/01/11	DCB	DDA		REVISED CARGO CAPACITY
0	10/14/11	JN	DDA		ISSUED FOR APPROVAL

**KIRBY INLAND MARINE**

**STRIPPING  
PIPING FLOW DIAGRAM**

SCALE: NONE	<b>KIRBY 28179</b>	REV. <b>3</b>
PAGE: 3 OF 3		