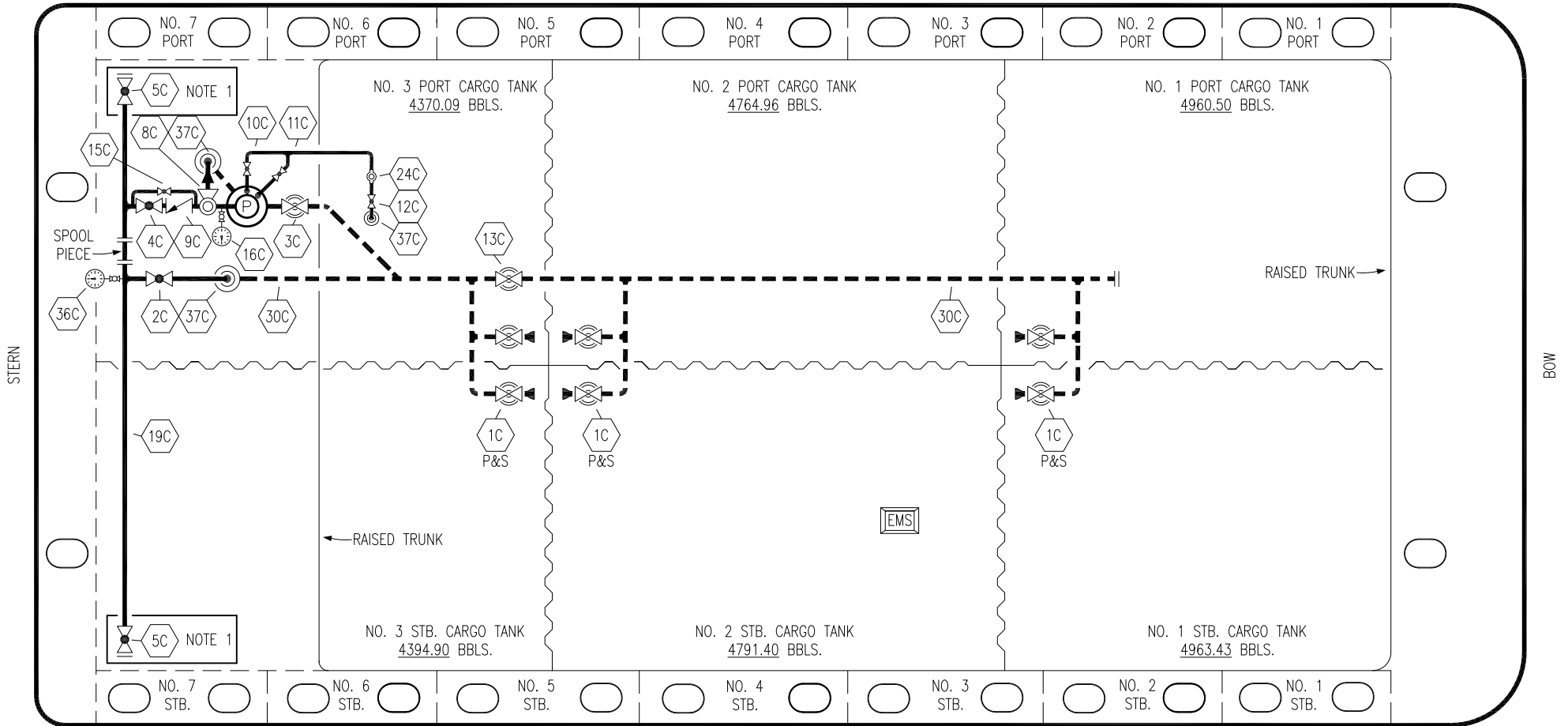


PORT



STARBOARD

- | | | | |
|-----|----------------------|-----|---------------------------------|
| NO | DESCRIPTION | NO | DESCRIPTION |
| 1C | CARGO TANK VALVE | 12C | BURP VALVE RETURN TO CARGO TANK |
| 2C | LOAD VALVE | 13C | CARGO PIPING BLOCK VALVE |
| 3C | MASTER SUCTION VALVE | 15C | BYPASS VALVE AROUND CHECK |
| 4C | DISCHARGE VALVE | 16C | DISCHARGE PRESSURE GAUGE |
| 5C | HEADER VALVE | 19C | CARGO HEADER |
| 8C | RELIEF VALVE | 24C | FLOW INDICATOR |
| 9C | CHECK VALVE | 30C | CARGO PIPELINE |
| 10C | BURP VALVE | 36C | PRESSURE GAUGE |
| 11C | BLEED OFF VALVE | 37C | CARGO DROP |

- ABOVE DECK PIPING
- - -** BELOW DECK PIPING

NOTE 1: CONTAINMENT P/S

REV.	DATE	BY	CHK	APP	REVISION DESCRIPTION
4	03/09/22	MRV	DDA	CW	REVISED PER CLIENT COMMENTS
3	03/07/17	WFB	DDA		REVISED PER CLIENT COMMENTS
2	11/07/13	DCB	DDA		MOVED 13C
1	03/08/11	DCB	DDA		REVISED TANK CAPACITY
A	01/07/11	BAG	RB	OF	FOR APPROVAL

TRINITY



KIRBY INLAND MARINE

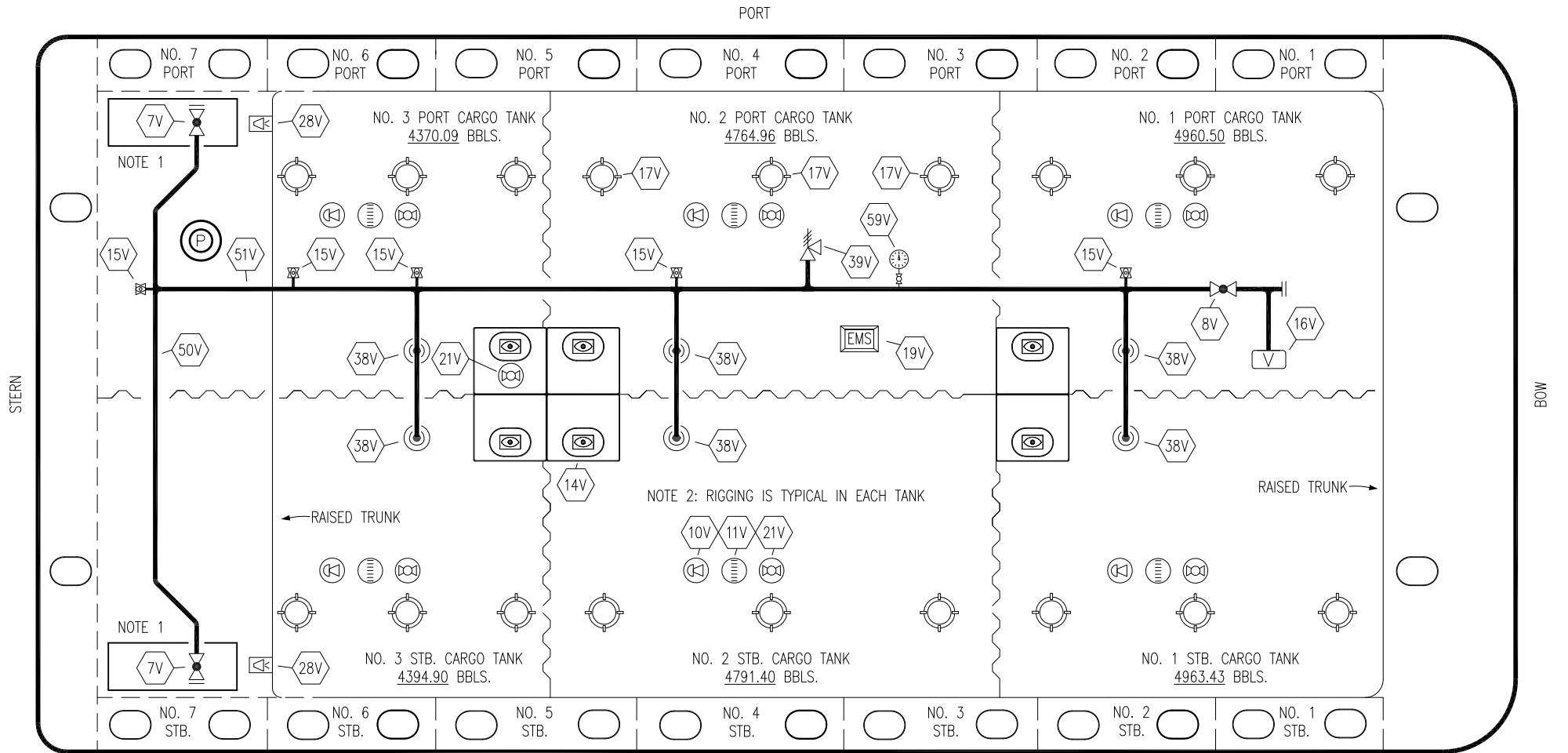
CARGO PIPING FLOW DIAGRAM

SCALE: NONE

PAGE: 1 OF 3

KIRBY 28176

REV. **4**



STERN

BOW

PORT


TRINITY

- | | | | |
|-----|------------------------------|-----|------------------------|
| NO | | | |
| 7V | 8" HEADER VALVE | 21V | 2" HERMETIC GAUGE |
| 8V | 8" VENT STACK VALVE | 28V | DOCK CONNECTION ALARM |
| 10V | 8" HIGH LEVEL/OVERFILL ALARM | 38V | 8" VAPOR PENETRATION |
| 11V | 8" 1-METER STICK GAUGE | 39V | PRESS/VAC RELIEF VALVE |
| 14V | 8" SIGHT GLASS W/GAUGE TREE | 50V | 8" VAPOR HEADER |
| 15V | 2" INSPECTION PORT | 51V | 8" VAPOR PIPELINE |
| 16V | 8" VAPOR VENT STACK | 59V | PRESS/VAC GAUGE |
| 17V | 20" BUTTERWORTH | — | ABOVE DECK PIPING |
| 19V | EMERGENCY ENGINE SHUT DOWN | | |

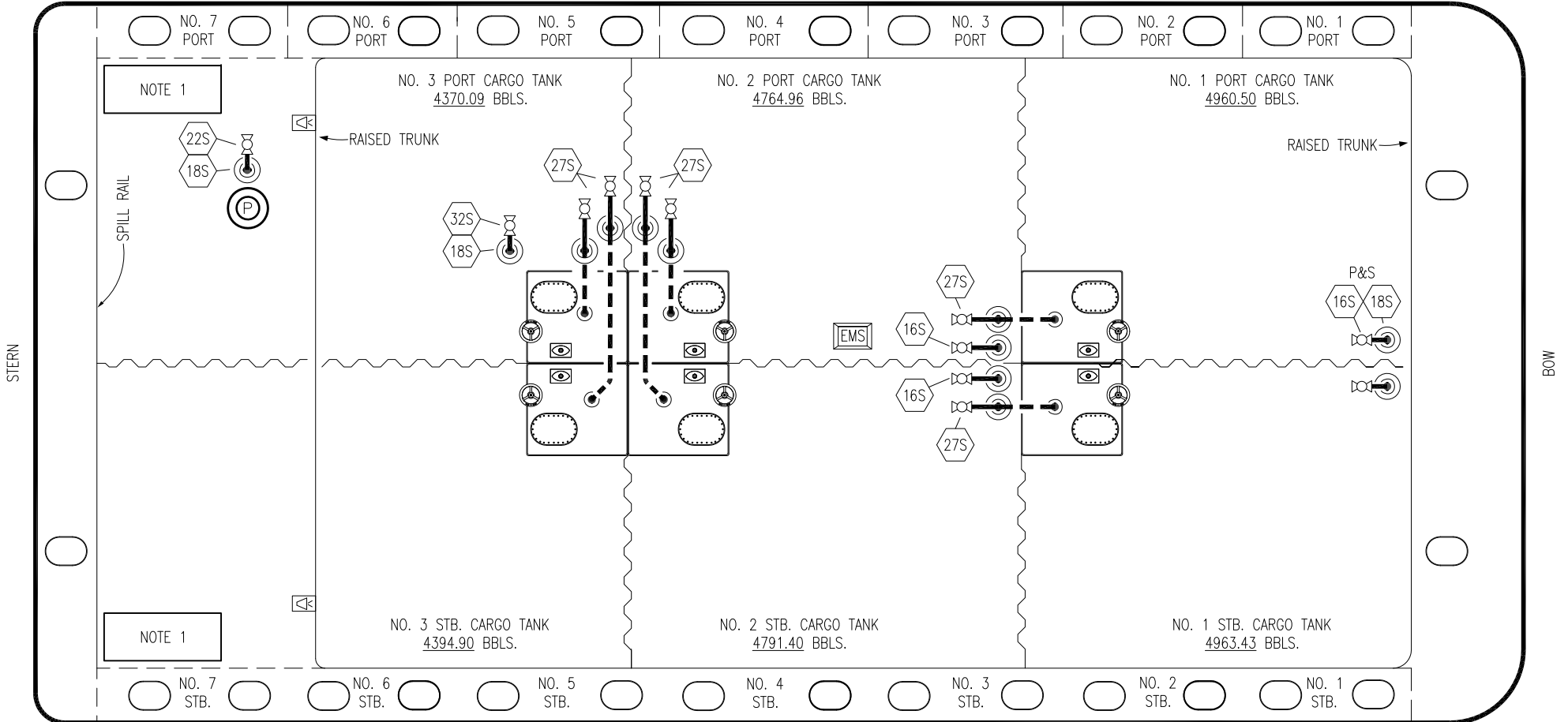
NOTE 1: CONTAINMENT P/S

NOTE 2: RIGGING IS TYPICAL IN EACH TANK

REV.	DATE	BY	CHK	APP	REVISION DESCRIPTION
1	03/09/22	MRV	DDA	CW	REVISED PER CLIENT COMMENTS
0	10/14/11	JN	DDA		ISSUED FOR APPROVAL

 KIRBY INLAND MARINE	
VAPOR PIPING FLOW DIAGRAM	
SCALE: NONE	KIRBY 28176
PAGE: 2 OF 3	REV. 1

PORT



- | NO | DESCRIPTION |
|-------|----------------------------|
| 16S | FWD TANK SUCTION STRIPPING |
| 18S | TYP. STRIPPING DROP |
| 22S | DEEPWELL STRIPPING PUMP |
| 27S | SUMP SUCTION VALVE |
| 32S | PIPELINE SUCTION |
| — | ABOVE DECK PIPING |
| - - - | BELOW DECK PIPING |

NOTE 1: CONTAINMENT P/S

TRINITY

REV.	DATE	BY	CHK	APP	REVISION DESCRIPTION
3	03/09/22	MRV	DDA	CW	REVISED PER CLIENT COMMENTS
2	11/07/13	DCB	DDA		REVISED PIPING
1	03/01/11	DCB	DDA		REVISED CARGO CAPACITY
0	10/14/11	JN	DDA		ISSUED FOR APPROVAL



KIRBY INLAND MARINE

STRIPPING

PIPING FLOW DIAGRAM

KIRBY 28176

SCALE: NONE	REV. 3
PAGE: 3 OF 3	