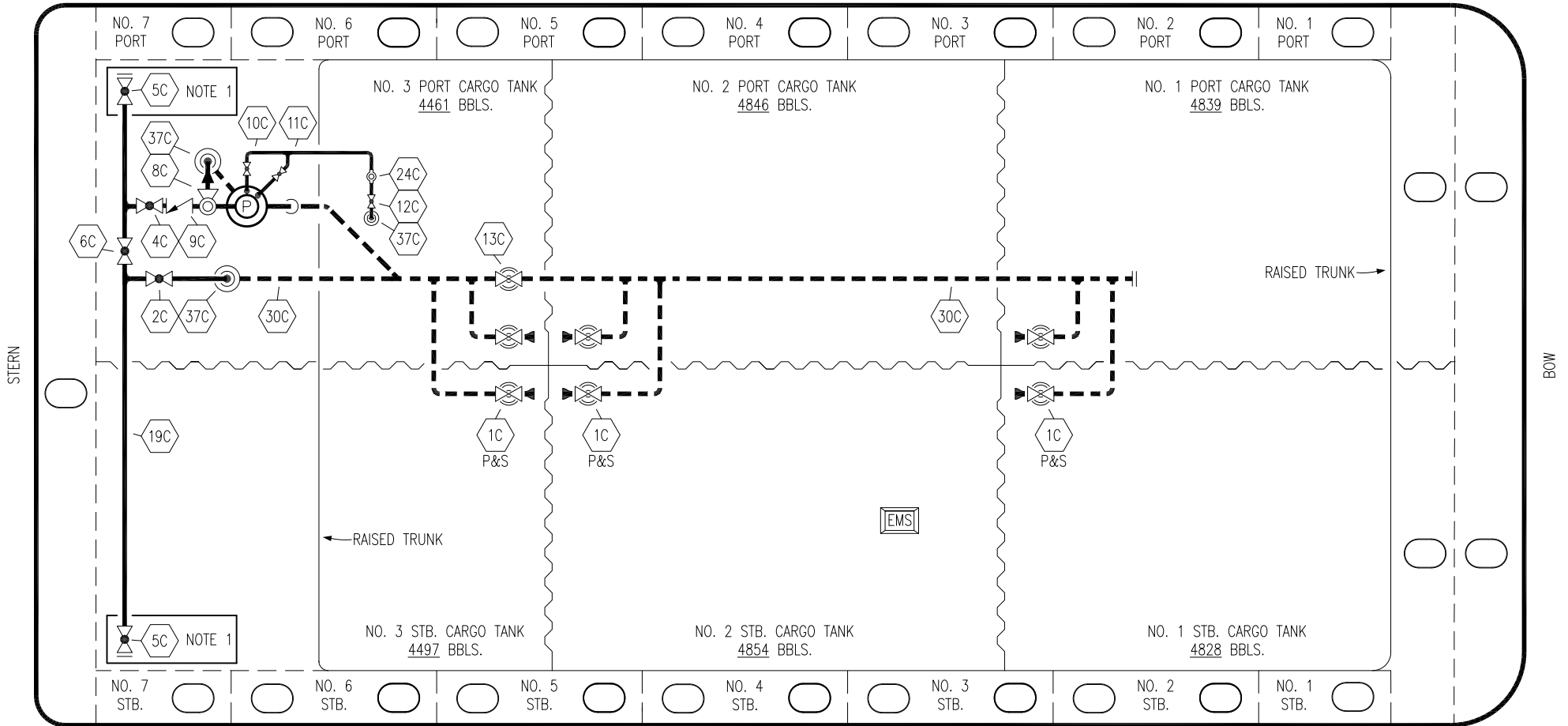



PORT



STERN

BOW

STARBOARD

- | | | | |
|-----|------------------|-----|--|
| NO | DESCRIPTION | NO | DESCRIPTION |
| 1C | CARGO TANK VALVE | 12C | BURP VALVE RETURN TO CARGO TANK |
| 2C | LOAD VALVE | 13C | CARGO PIPING BLOCK VALVE |
| 4C | DISCHARGE VALVE | 19C | CARGO HEADER |
| 5C | HEADER VALVE | 24C | FLOW INDICATOR |
| 6C | SALVAGE VALVE | 30C | CARGO PIPELINE |
| 8C | RELIEF VALVE | 37C | CARGO DROP  |
| 9C | CHECK VALVE | — | — ABOVE DECK PIPING |
| 10C | BURP VALVE | --- | --- BELOW DECK PIPING |
| 11C | BLEED OFF VALVE | | |

NOTE 1: CONTAINMENT P/S

REV.	DATE	BY	CHK	APP	REVISION DESCRIPTION
3	08/27/21	MRV	DDA	MR	REVISED PER CLIENT COMMENTS
2	11/07/13	DCB	DDA		MOVED 13C
1	03/08/11	DCB	DDA		REVISED TANK CAPACITY
A	01/07/11	BAG	RB	OF	FOR APPROVAL

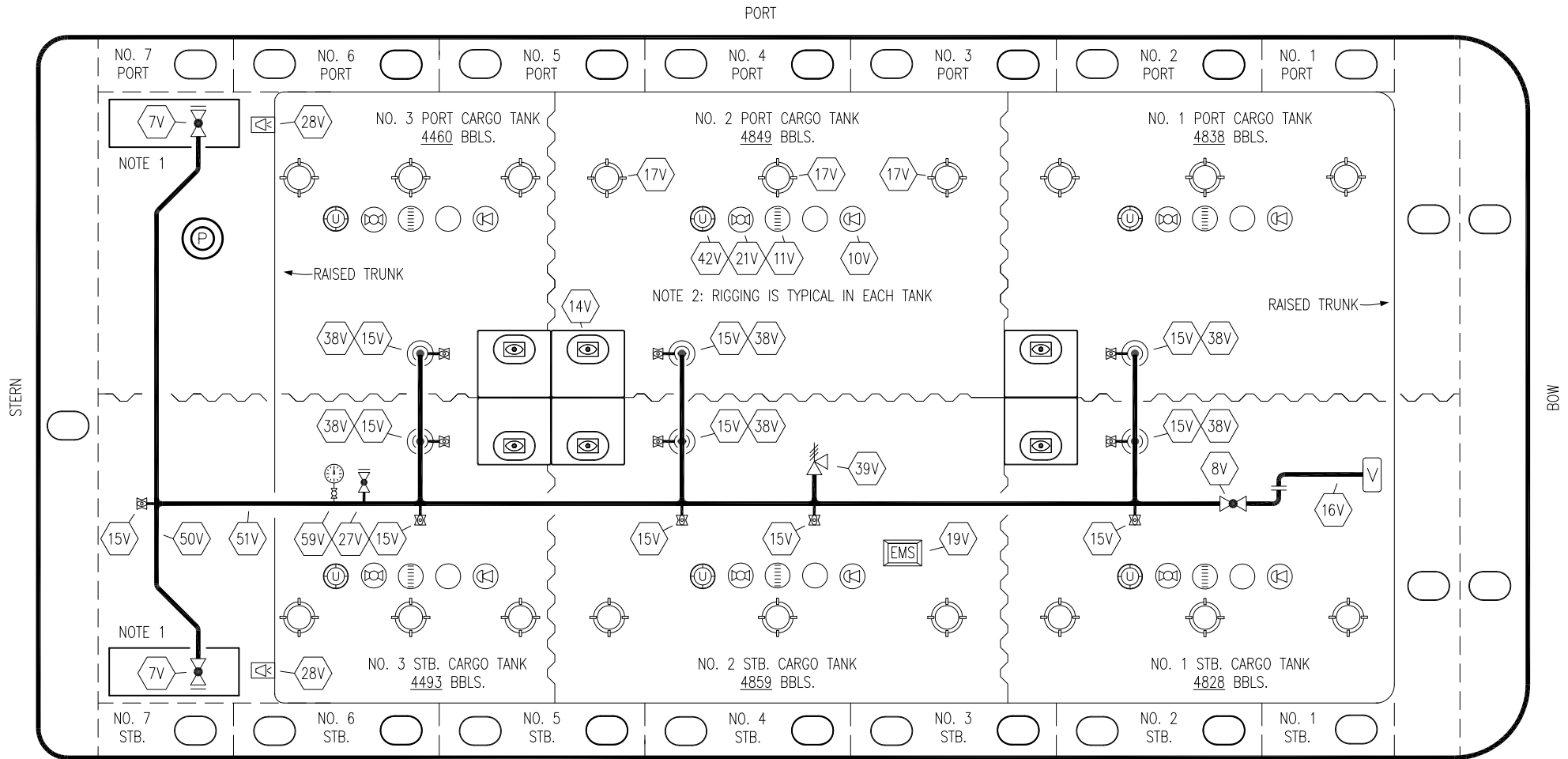
KIRBY INLAND MARINE 

**CARGO
PIPING FLOW DIAGRAM**

SCALE: NONE
PAGE: 1 OF 3

KIRBY 28174 REV. **3**

TRINITY



NO	DESCRIPTION	NO	DESCRIPTION
7V	8" HEADER VALVE	21V	2" HERMETIC GAUGE
8V	8" VENT STACK VALVE	27V	1/4" TEST CONNECTION VALVE
10V	8" HIGH LEVEL/OVERFILL ALARM	28V	DOCK CONNECTION ALARM
11V	8" 1-METER STICK GAUGE	38V	8" VAPOR PENETRATION
14V	6" SIGHT GLASS W/GAUGE TREE	39V	PRESS/VAC RELIEF VALVE
15V	2" INSPECTION PORT	42V	8" ULLAGE HATCH
16V	8" VAPOR VENT STACK	50V	8" VAPOR HEADER
17V	14" BUTTERWORTH	51V	8" VAPOR PIPELINE
18V	2" RESTRICTIVE GAUGE TUBE	59V	PRESS/VAC GAUGE
19V	EMERGENCY ENGINE SHUT DOWN		ABOVE DECK PIPING

NOTE 1: CONTAINMENT P/S
 NOTE 2: RIGGING IS TYPICAL IN EACH TANK

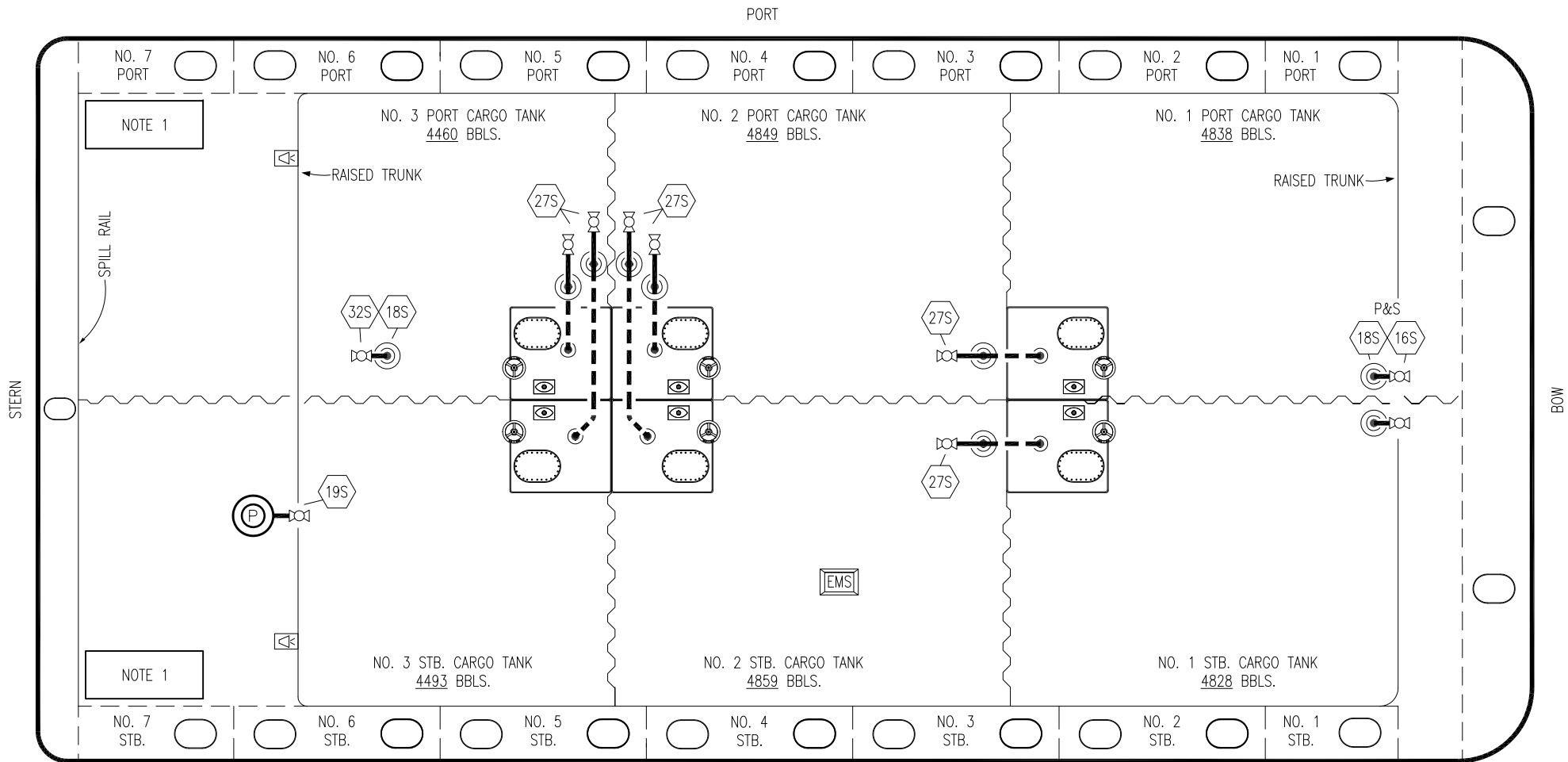
REV.	DATE	BY	CHK	APP	REVISION DESCRIPTION
2	08/27/21	MRV	DDA	MR	REVISED PER CLIENT COMMENTS
1	05/19/11	JN	DDA		REVISED CARGO CAPACITY
A	01/07/11	BAG	RB	OF	FOR APPROVAL

TRINITY

KIRBY INLAND MARINE

**VAPOR
PIPING FLOW DIAGRAM**

SCALE: NONE	KIRBY 28174	REV. 2
PAGE: 2 OF 3		



- | NO | DESCRIPTION |
|-----|--------------------------------|
| 16S | REMOTE SUCTION CONNECTION |
| 18S | TYP. STRIPPING DROP |
| 19S | DEEPWELL SUCTION STRIPPING CAN |
| 27S | SUMP SUCTION VALVE |
| 32S | PUMP WELL PRIMER VALVE |

- | | |
|--|-------------------|
| | ABOVE DECK PIPING |
| | BELOW DECK PIPING |

NOTE 1: CONTAINMENT P/S

REV.	DATE	BY	CHK	APP	REVISION DESCRIPTION
3	08/27/21	MRV	DDA	MR	REVISED PER CLIENT COMMENTS
2	11/07/13	DCB	DDA		REVISED PIPING
1	03/01/11	DCB	DDA		REVISED CARGO CAPACITY
0	10/14/11	JN	DDA		ISSUED FOR APPROVAL

STRIPPING PIPING FLOW DIAGRAM	
SCALE: NONE	KIRBY 28174
PAGE: 3 OF 3	
TRINITY REV. 3	