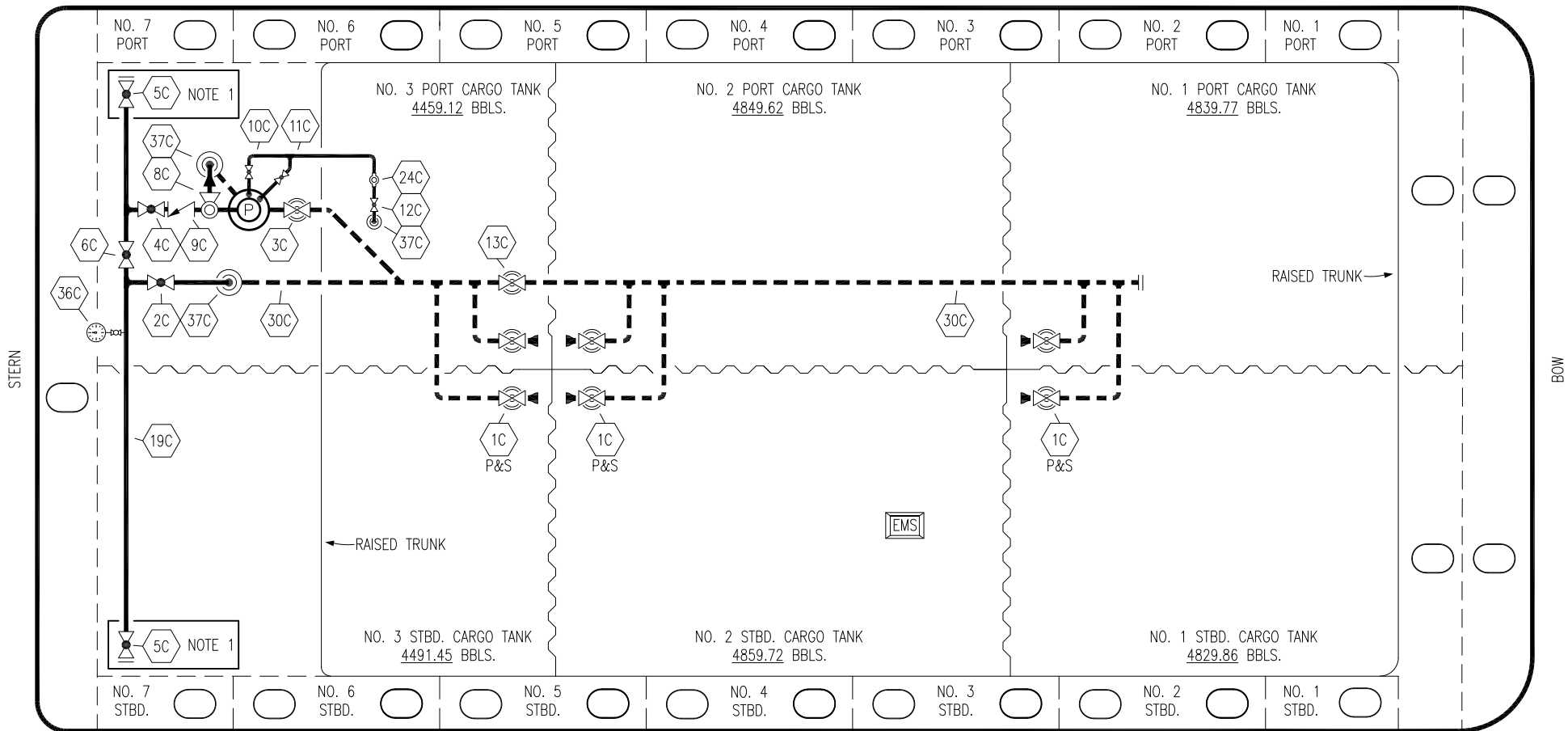


PORT




STARBOARD

NO	DESCRIPTION	NO	DESCRIPTION
1C	CARGO TANK VALVE	12C	BURP VALVE RETURN TO CARGO TANK
2C	LOAD VALVE	13C	CARGO PIPING BLOCK VALVE
3C	MASTER SUCTION VALVE	19C	CARGO HEADER
4C	DISCHARGE VALVE	24C	FLOW INDICATOR
5C	HEADER VALVE	30C	CARGO PIPELINE
6C	SALVAGE VALVE	36C	PRESSURE GAUGE
8C	RELIEF VALVE	37C	CARGO DROP
9C	CHECK VALVE	—	— ABOVE DECK PIPING
10C	BURP VALVE	---	--- BELOW DECK PIPING
11C	BLEED OFF VALVE		

NOTE 1: CONTAINMENT P/S

TRINITY

REV.	DATE	BY	CHK	APP	REVISION DESCRIPTION
3	07/21/21	MRV	DDA	JF	REVISED PER CLIENT COMMENTS
2	11/07/13	DCB	DDA		MOVED 13C
1	03/08/11	DCB	DDA		REVISED TANK CAPACITY
A	01/07/11	BAG	RB	OF	FOR APPROVAL



KIRBY INLAND MARINE

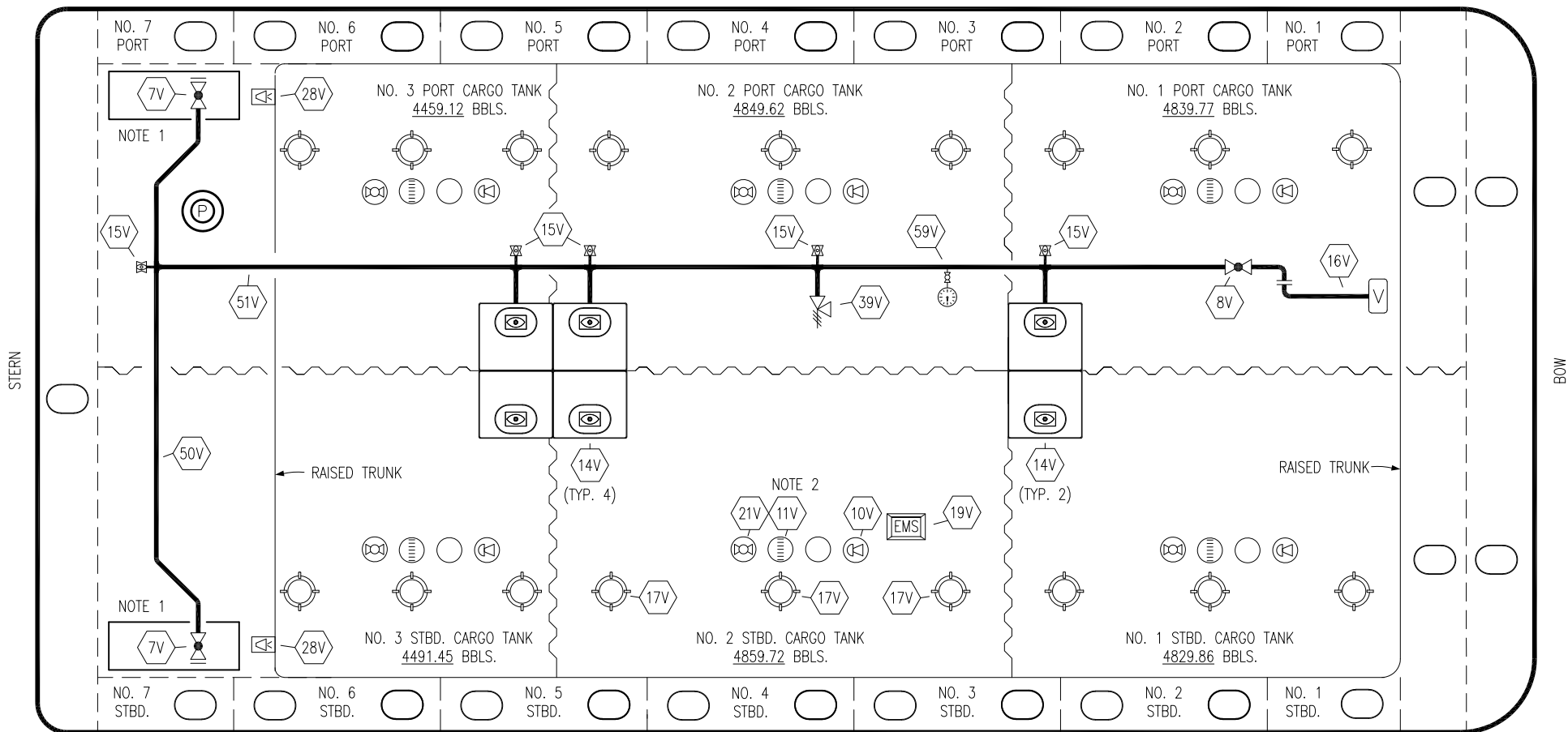
CARGO

PIPING FLOW DIAGRAM

KIRBY 28170

SCALE: NONE	REV. 3
PAGE: 1 OF 3	

PORT



STARBOARD

- | | | | |
|-----|------------------------------|-----|--------------------------|
| NO | DESCRIPTION | NO | DESCRIPTION |
| 7V | 8" HEADER VALVE | 21V | 2" HERMETIC GAUGE |
| 8V | 8" VENT STACK VALVE | 28V | DOCK CONNECTION ALARM |
| 10V | 8" HIGH LEVEL/OVERFILL ALARM | 38V | 8" VAPOR PENETRATION (P) |
| 11V | 8" 1-METER STICK GAUGE | 39V | PRESS/VAC RELIEF VALVE |
| 14V | 6" SIGHT GLASS W/GAUGE TREE | 50V | 8" VAPOR HEADER |
| 15V | 2" INSPECTION PORT | 51V | 8" VAPOR PIPELINE |
| 16V | 8" VAPOR VENT STACK | 59V | PRESS/VAC GAUGE |
| 17V | 14" BUTTERWORTH | — | ABOVE DECK PIPING |
| 18V | 2" RESTRICTIVE GAUGE TUBE | | |
| 19V | EMERGENCY ENGINE SHUT DOWN | | |

NOTE 1: CONTAINMENT P/S

NOTE 2: RIGGING IS TYPICAL IN EACH TANK

TRINITY

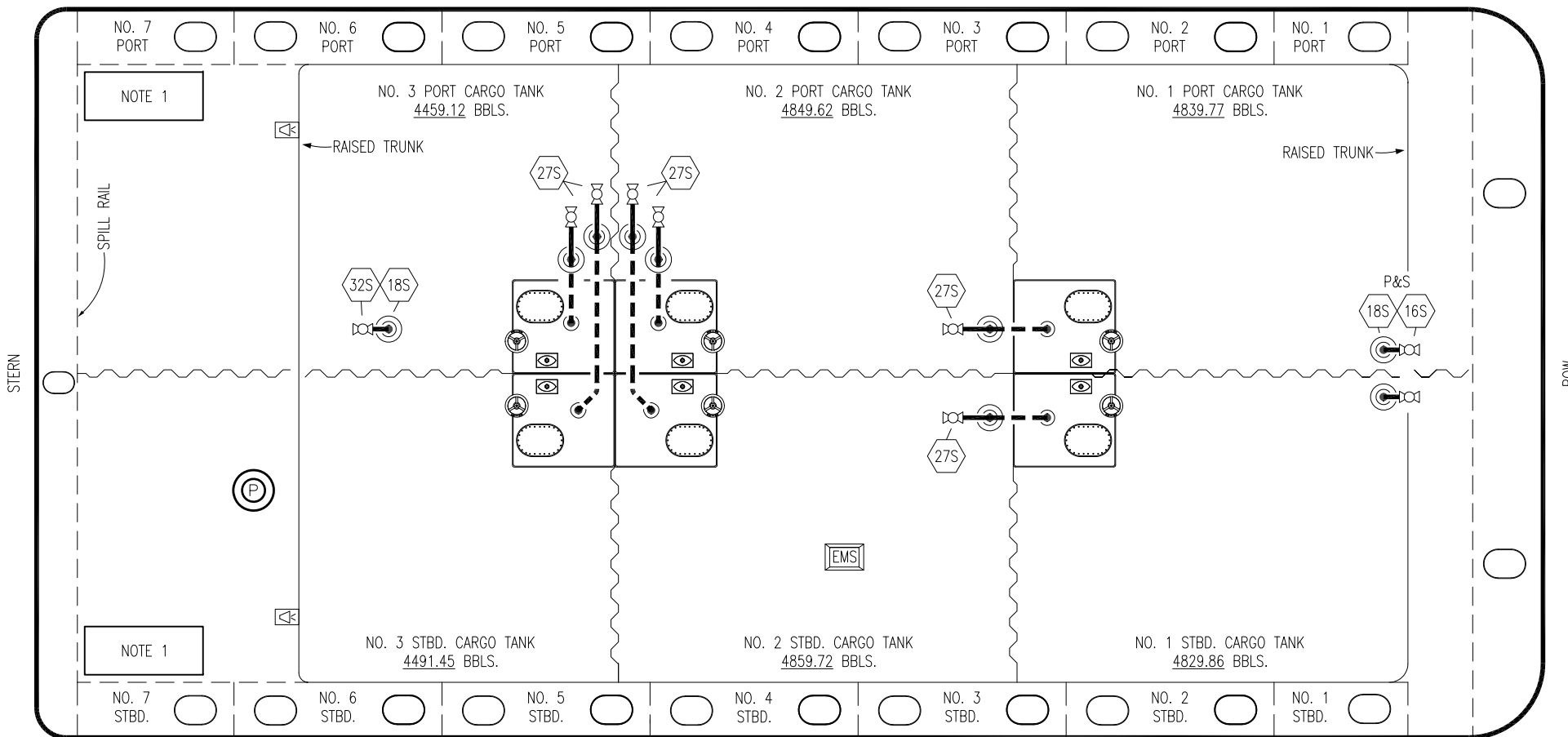
REV.	DATE	BY	CHK	APP	REVISION DESCRIPTION
2	07/21/21	MRV	DDA	JF	REVISED PER CLIENT COMMENTS
1	04/25/11	JN	DDA		REVISED CARGO CAPACITY
A	01/07/11	BAG	RB	OF	FOR APPROVAL

KIRBY INLAND MARINE

VAPOR
PIPING FLOW DIAGRAM

SCALE: NONE	KIRBY 28170	REV. 2
PAGE: 2 OF 3		


PORT



- | NO | DESCRIPTION |
|-------|---------------------------|
| 16S | REMOTE SUCTION CONNECTION |
| 18S | TYP. STRIPPING DROP |
| 27S | SUMP SUCTION VALVE |
| — | ABOVE DECK PIPING |
| - - - | BELOW DECK PIPING |

NOTE 1: CONTAINMENT P/S

TRINITY

						KIRBY INLAND MARINE 	
						STRIPPING	
						PIPING FLOW DIAGRAM	
3	07/21/21	MRV	DDA	JF	REVISED PER CLIENT COMMENTS	SCALE:	NONE
2	11/07/13	DCB	DDA		REVISED PIPING	KIRBY 28170	REV. 3
1	03/01/11	DCB	DDA		REVISED CARGO CAPACITY		
0	10/14/11	JN	DDA		ISSUED FOR APPROVAL	PAGE:	3 OF 3
REV.	DATE	BY	CHK	APP	REVISION DESCRIPTION		