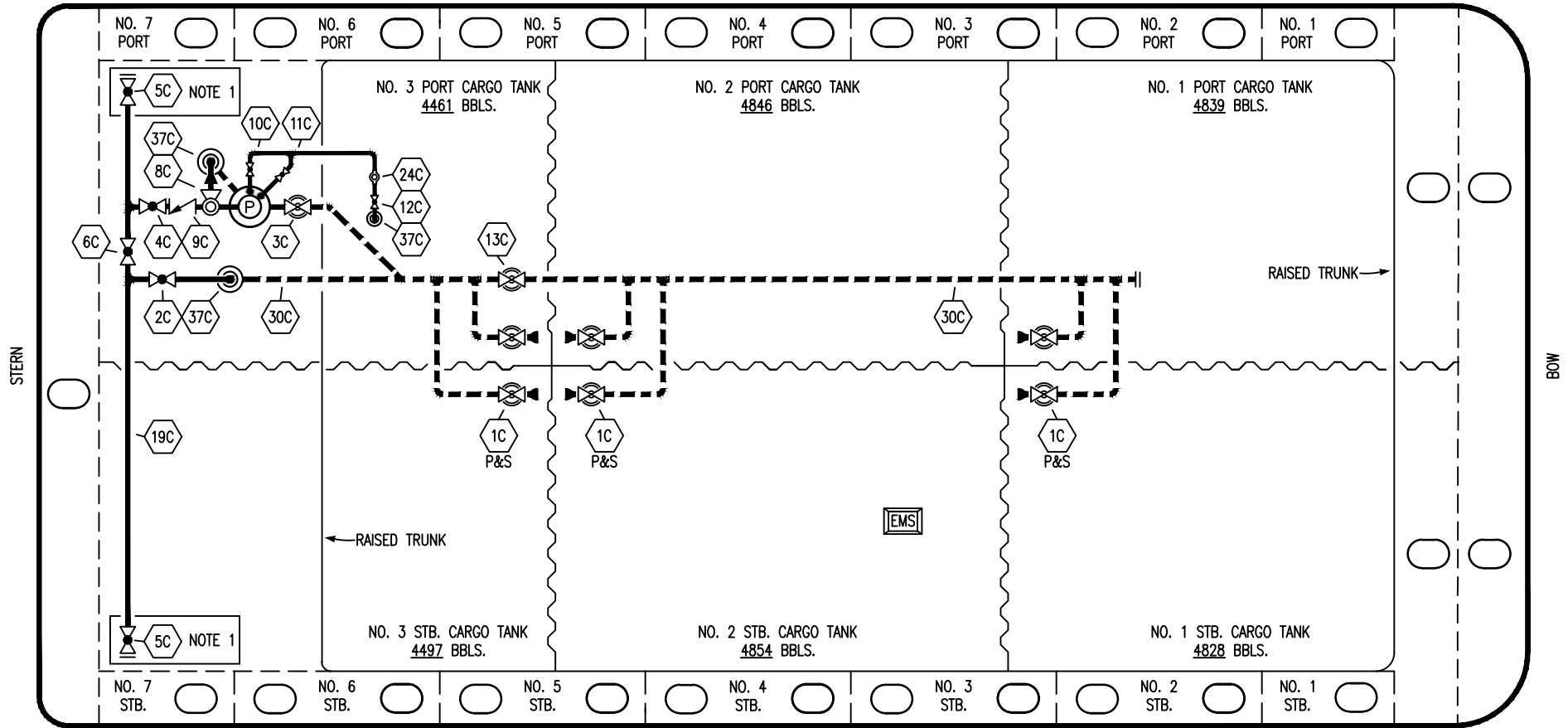


PORT




STARBOARD

- |           |                      |           |                                 |
|-----------|----------------------|-----------|---------------------------------|
| <b>NO</b> | <b>DESCRIPTION</b>   | <b>NO</b> | <b>DESCRIPTION</b>              |
| 1C        | CARGO TANK VALVE     | 12C       | BURP VALVE RETURN TO CARGO TANK |
| 2C        | LOAD VALVE           | 13C       | CARGO PIPING BLOCK VALVE        |
| 3C        | MASTER SUCTION VALVE | 19C       | CARGO HEADER                    |
| 4C        | DISCHARGE VALVE      | 24C       | FLOW INDICATOR                  |
| 5C        | HEADER VALVE         | 30C       | CARGO PIPELINE                  |
| 6C        | SALVAGE VALVE        | 37C       | CARGO DROP                      |
| 8C        | RELIEF VALVE         | —         | — ABOVE DECK PIPING             |
| 9C        | CHECK VALVE          | ---       | --- BELOW DECK PIPING           |
| 10C       | BURP VALVE           |           |                                 |
| 11C       | BLEED OFF VALVE      |           |                                 |

NOTE 1: CONTAINMENT P/S

TRINITY

| REV. | DATE     | BY  | CHK | APP | REVISION DESCRIPTION  |
|------|----------|-----|-----|-----|-----------------------|
| 2    | 11/07/13 | DCB | DDA |     | MOVED 13C             |
| 1    | 03/08/11 | DCB | DDA |     | REVISED TANK CAPACITY |
| A    | 01/07/11 | BAG | RB  | OF  | FOR APPROVAL          |



**KIRBY INLAND MARINE**

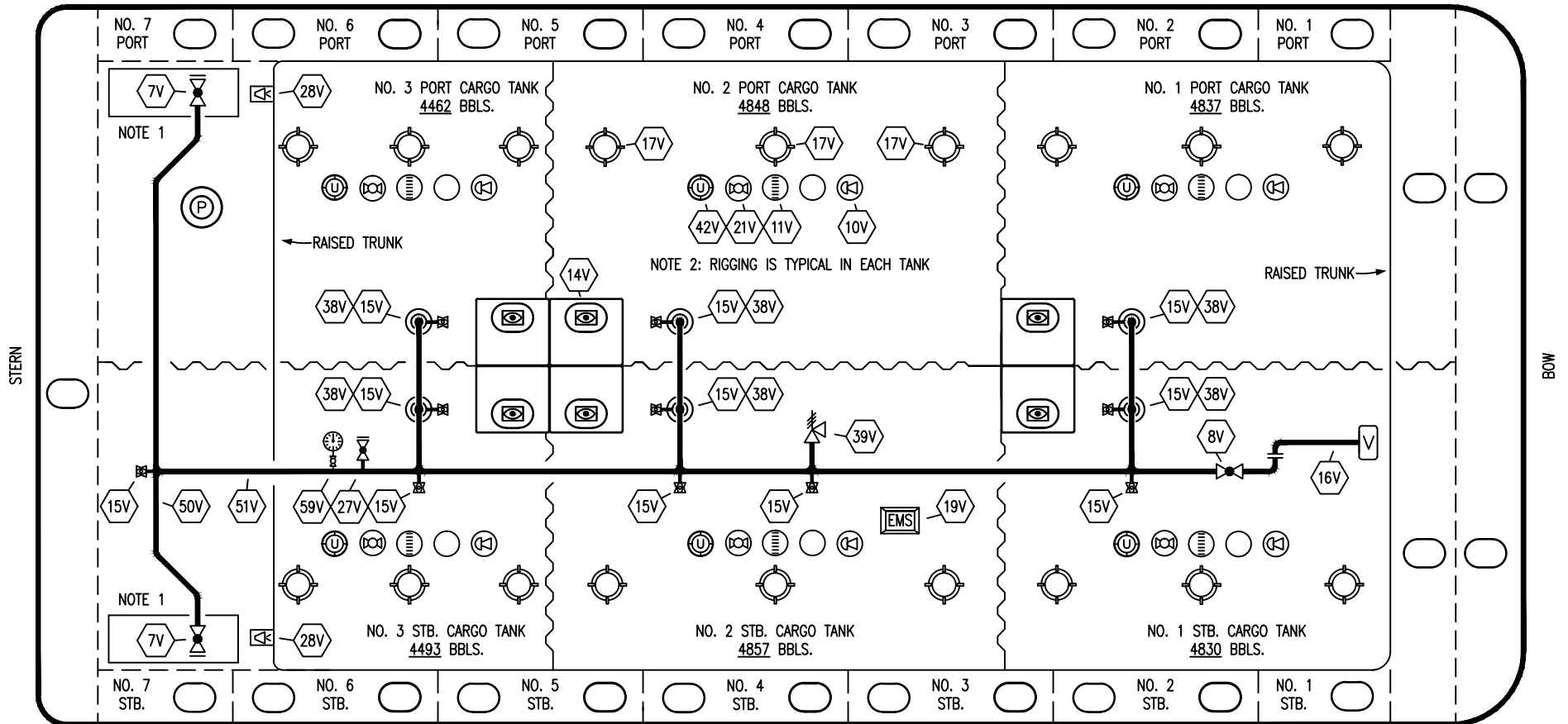
**CARGO**

**PIPING FLOW DIAGRAM**

**KIRBY 28168**

|              |        |
|--------------|--------|
| SCALE: NONE  | REV. 2 |
| PAGE: 1 OF 3 |        |

PORT



STERN

BOW

STARBOARD


| NO  | DESCRIPTION                  | NO  | DESCRIPTION                |
|-----|------------------------------|-----|----------------------------|
| 7V  | 8" HEADER VALVE              | 21V | 2" HERMETIC GAUGE          |
| 8V  | 8" VENT STACK VALVE          | 27V | 1/4" TEST CONNECTION VALVE |
| 10V | 8" HIGH LEVEL/OVERFILL ALARM | 28V | DOCK CONNECTION ALARM      |
| 11V | 8" 1-METER STICK GAUGE       | 38V | 8" VAPOR PENETRATION       |
| 14V | 6" SIGHT GLASS W/GAUGE TREE  | 39V | PRESS/VAC RELIEF VALVE     |
| 15V | 2" INSPECTION PORT           | 42V | 8" ULLAGE HATCH            |
| 16V | 8" VAPOR VENT STACK          | 50V | 8" VAPOR HEADER            |
| 17V | 14" BUTTERWORTH              | 51V | 8" VAPOR PIPELINE          |
| 18V | 2" RESTRICTIVE GAUGE TUBE    | 59V | PRESS/VAC GAUGE            |
| 19V | EMERGENCY ENGINE SHUT DOWN   | —   | ABOVE DECK PIPING          |

NOTE 1: CONTAINMENT P/S

NOTE 2: RIGGING IS TYPICAL IN EACH TANK

TRINITY

| REV. | DATE     | BY  | CHK | APP | REVISION DESCRIPTION  |
|------|----------|-----|-----|-----|-----------------------|
| 1    | 04/12/11 | JN  | DDA |     | REVISED TANK CAPACITY |
| A    | 01/07/11 | BAG | RB  | OF  | FOR APPROVAL          |

**KIRBY INLAND MARINE** 

**VAPOR PIPING FLOW DIAGRAM**

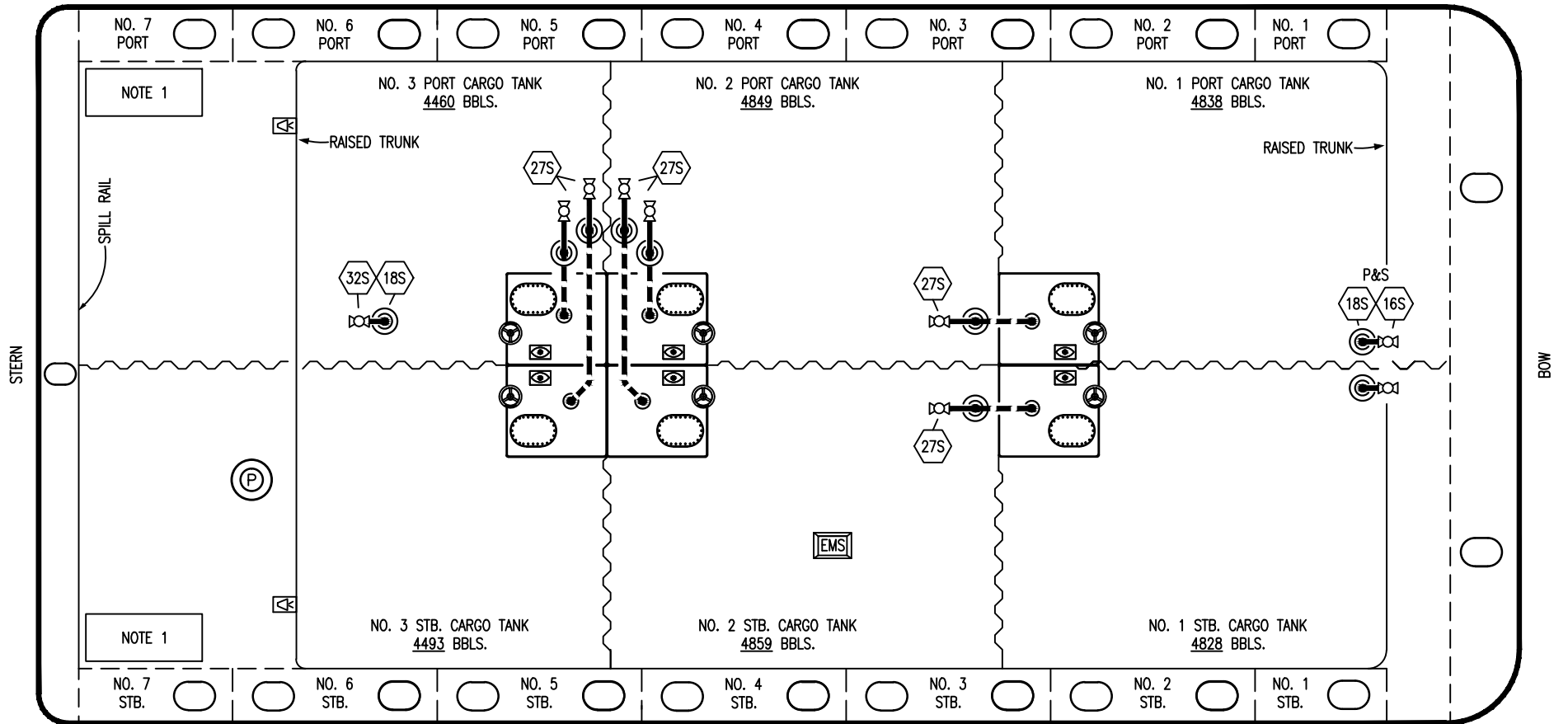
SCALE: NONE

**KIRBY 28168**

PAGE: 2 OF 3

REV. **1**


PORT



- | NO    | DESCRIPTION               |
|-------|---------------------------|
| 16S   | REMOTE SUCTION CONNECTION |
| 18S   | TYP. STRIPPING DROP       |
| 27S   | SUMP SUCTION VALVE        |
| —     | ABOVE DECK PIPING         |
| - - - | BELOW DECK PIPING         |

NOTE 1: CONTAINMENT P/S

TRINITY

|      |          |     |     |     |                        |  |                    |
|------|----------|-----|-----|-----|------------------------|--|--------------------|
|      |          |     |     |     |                        | <b>KIRBY INLAND MARINE</b>  |                    |
|      |          |     |     |     |                        |  |                    |
|      |          |     |     |     |                        | <b>STRIPPING<br/>PIPING FLOW DIAGRAM</b>   |                    |
| 2    | 11/07/13 | DCB | DDA |     | REVISED PIPING         |  |                    |
| 1    | 03/01/11 | DCB | DDA |     | REVISED CARGO CAPACITY |  |                    |
| 0    | 10/14/11 | JN  | DDA |     | ISSUED FOR APPROVAL    | SCALE: NONE  |                    |
| REV. | DATE     | BY  | CHK | APP | REVISION DESCRIPTION   | PAGE: 3 OF 3   | <b>KIRBY 28168</b> |

REV. 2