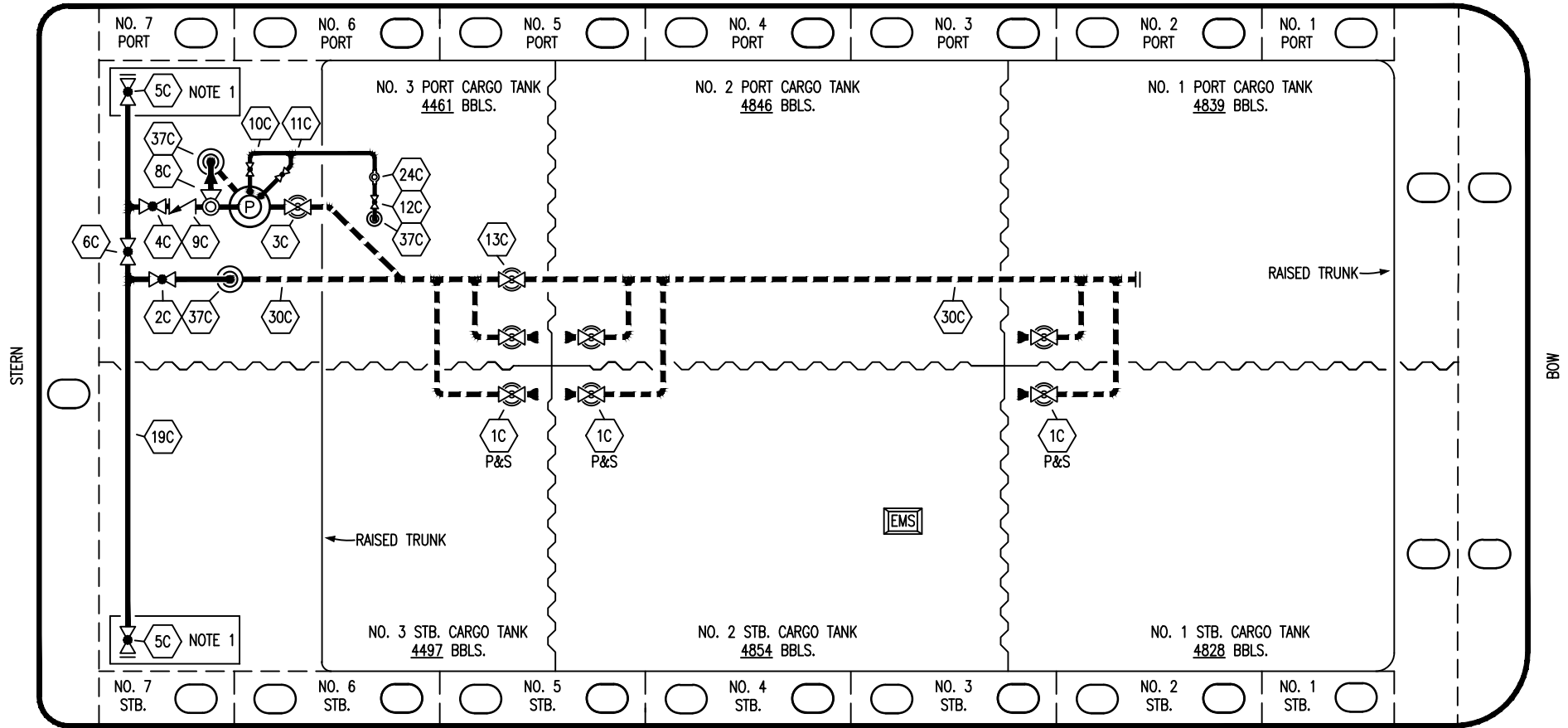


PORT



STERN

BOW

STARBOARD

- | | | | |
|-----|----------------------|-----|---------------------------------|
| NO | DESCRIPTION | NO | DESCRIPTION |
| 1C | CARGO TANK VALVE | 12C | BURP VALVE RETURN TO CARGO TANK |
| 2C | LOAD VALVE | 13C | CARGO PIPING BLOCK VALVE |
| 3C | MASTER SUCTION VALVE | 19C | CARGO HEADER |
| 4C | DISCHARGE VALVE | 24C | FLOW INDICATOR |
| 5C | HEADER VALVE | 30C | CARGO PIPELINE |
| 6C | SALVAGE VALVE | 37C | CARGO DROP |
| 8C | RELIEF VALVE | — | — ABOVE DECK PIPING |
| 9C | CHECK VALVE | --- | --- BELOW DECK PIPING |
| 10C | BURP VALVE | | |
| 11C | BLEED OFF VALVE | | |

NOTE 1: CONTAINMENT P/S

TRINITY

| REV. | DATE | BY | CHK | APP | REVISION DESCRIPTION |
|------|----------|-----|-----|-----|-----------------------|
| 2 | 11/07/13 | DCB | DDA | | MOVED 13C |
| 1 | 03/08/11 | DCB | DDA | | REVISED TANK CAPACITY |
| A | 01/07/11 | BAG | RB | OF | FOR APPROVAL |

KIRBY INLAND MARINE

CARGO

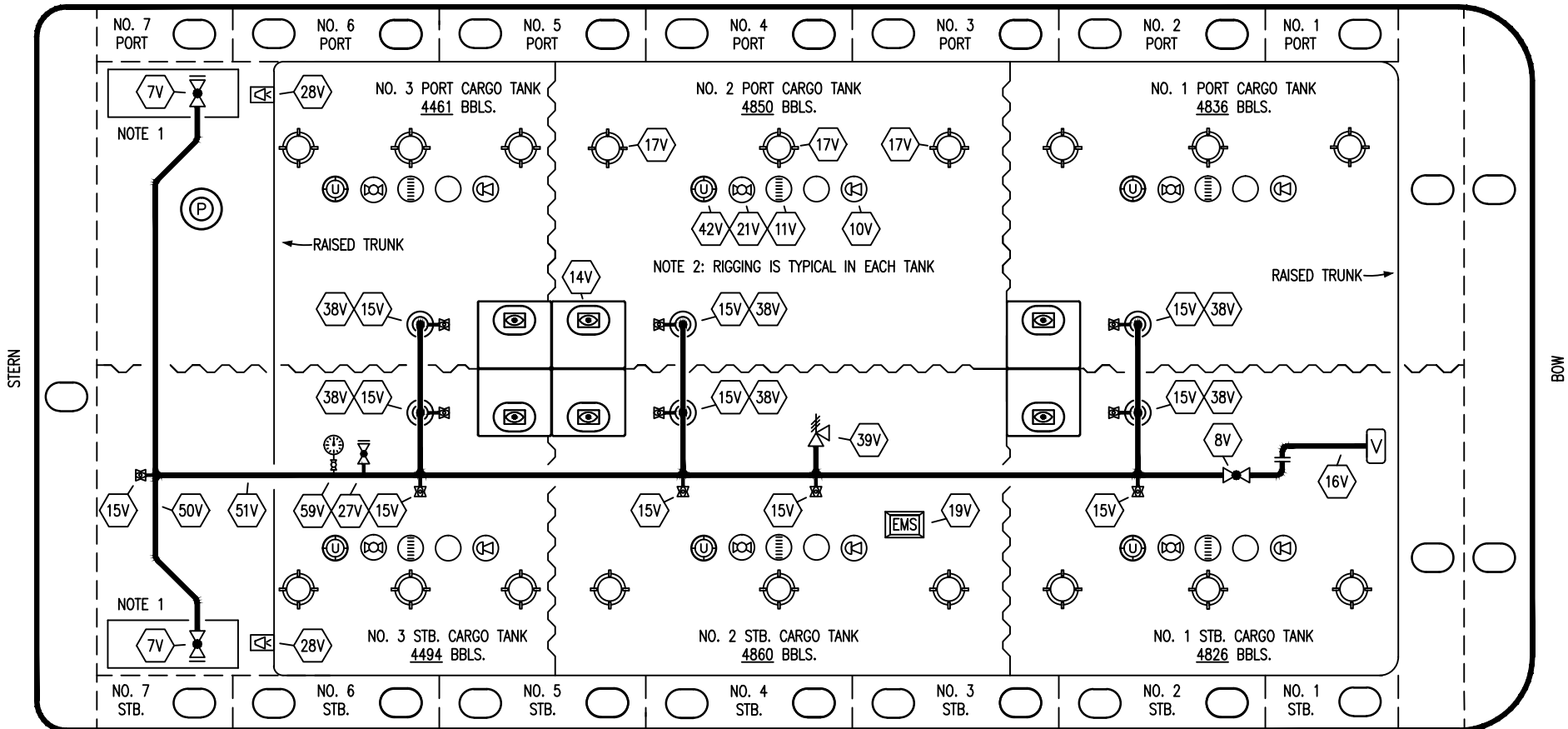
PIPING FLOW DIAGRAM

KIRBY 28163

REV. 2

SCALE: NONE
PAGE: 1 OF 3

PORT



STERN

BOW

STARBOARD

| NO | DESCRIPTION | NO | DESCRIPTION |
|-----|------------------------------|-----|----------------------------|
| 7V | 8" HEADER VALVE | 21V | 2" HERMETIC GAUGE |
| 8V | 8" VENT STACK VALVE | 27V | 1/4" TEST CONNECTION VALVE |
| 10V | 8" HIGH LEVEL/OVERFILL ALARM | 28V | DOCK CONNECTION ALARM |
| 11V | 8" 1-METER STICK GAUGE | 38V | 8" VAPOR PENETRATION (P) |
| 14V | 6" SIGHT GLASS W/GAUGE TREE | 39V | PRESS/VAC RELIEF VALVE |
| 15V | 2" INSPECTION PORT | 42V | 8" ULLAGE HATCH |
| 16V | 8" VAPOR VENT STACK | 50V | 8" VAPOR HEADER |
| 17V | 14" BUTTERWORTH | 51V | 8" VAPOR PIPELINE |
| 18V | 2" RESTRICTIVE GAUGE TUBE | 59V | PRESS/VAC GAUGE |
| 19V | EMERGENCY ENGINE SHUT DOWN | — | — ABOVE DECK PIPING |

NOTE 1: CONTAINMENT P/S

NOTE 2: RIGGING IS TYPICAL IN EACH TANK

TRINITY

| REV. | DATE | BY | CHK | APP | REVISION DESCRIPTION |
|------|----------|-----|-----|-----|------------------------|
| 1 | 03/16/11 | JN | DA | | REVISE BARREL CAPACITY |
| A | 01/07/11 | BAG | RB | OF | FOR APPROVAL |

KIRBY INLAND MARINE 

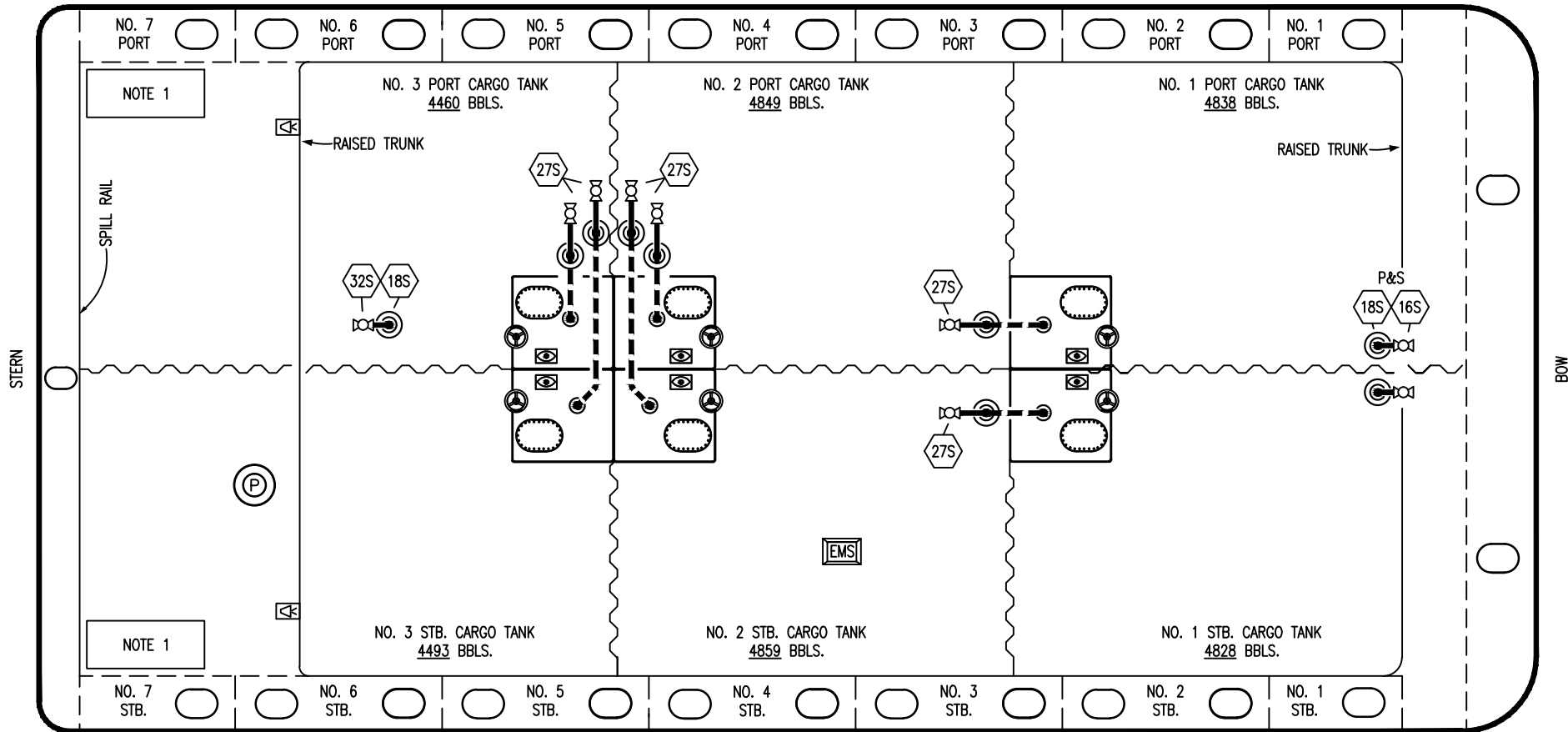
**VAPOR
PIPING FLOW DIAGRAM**

SCALE: NONE
PAGE: 2 OF 3

KIRBY 28163

REV. **1**


PORT



- | NO | DESCRIPTION |
|-------|---------------------------|
| 16S | REMOTE SUCTION CONNECTION |
| 18S | TYP. STRIPPING DROP |
| 27S | SUMP SUCTION VALVE |
| — | ABOVE DECK PIPING |
| - - - | BELOW DECK PIPING |

NOTE 1: CONTAINMENT P/S

TRINITY

| | | | | | | | |
|------|----------|-----|-----|-----|--|--------------|--|
| | | | | | KIRBY INLAND MARINE  | | |
| | | | | | | | STRIPPING PIPING FLOW DIAGRAM |
| 2 | 11/07/13 | DCB | DDA | | REVISED PIPING | | |
| 1 | 03/01/11 | DCB | DDA | | REVISED CARGO CAPACITY | | |
| 0 | 10/14/11 | JN | DDA | | ISSUED FOR APPROVAL | | |
| REV. | DATE | BY | CHK | APP | REVISION DESCRIPTION | SCALE: NONE | |
| | | | | | | PAGE: 3 OF 3 | KIRBY 28163 |
| | | | | | | | REV. 2 |