

- |     |                          |       |                              |
|-----|--------------------------|-------|------------------------------|
| NO  | DESCRIPTION              | NO    | DESCRIPTION                  |
| 1C  | 8" CARGO TANK VALVE      | 13C   | 12" CARGO PIPING BLOCK VALVE |
| 2C  | 8" LOAD VALVE            | 15C   | 2" CHECK BYPASS VALVE        |
| 3C  | 12" MASTER SUCTION VALVE | 19C   | 8" CARGO HEADER              |
| 4C  | 8" DISCHARGE VALVE       | 30C   | 12" CARGO PIPELINE           |
| 5C  | 8" HEADER VALVE          | 37C   | CARGO DROP                   |
| 6C  | 8" SALVAGE SPOOL PIECE   | —     | — ABOVE DECK PIPING          |
| 8C  | 6" RELIEF VALVE          | - - - | - - - BELOW DECK PIPING      |
| 9C  | 8" CHECK VALVE           |       |                              |
| 10C | BURP VALVE               |       |                              |

NOTE 1: CONTAINMENT P/S

WEST GULF MARINE

REV.	DATE	BY	CHK	APP	REVISION DESCRIPTION
2	11/16/22	MRV	DDA	LEP	REVISED PER CLIENT COMMENTS
1	11/22/17	WFB	DDA		REVISED PER CLIENT COMMENTS
0	02/03/12	DCB	DDA		ISSUED FOR APPROVAL

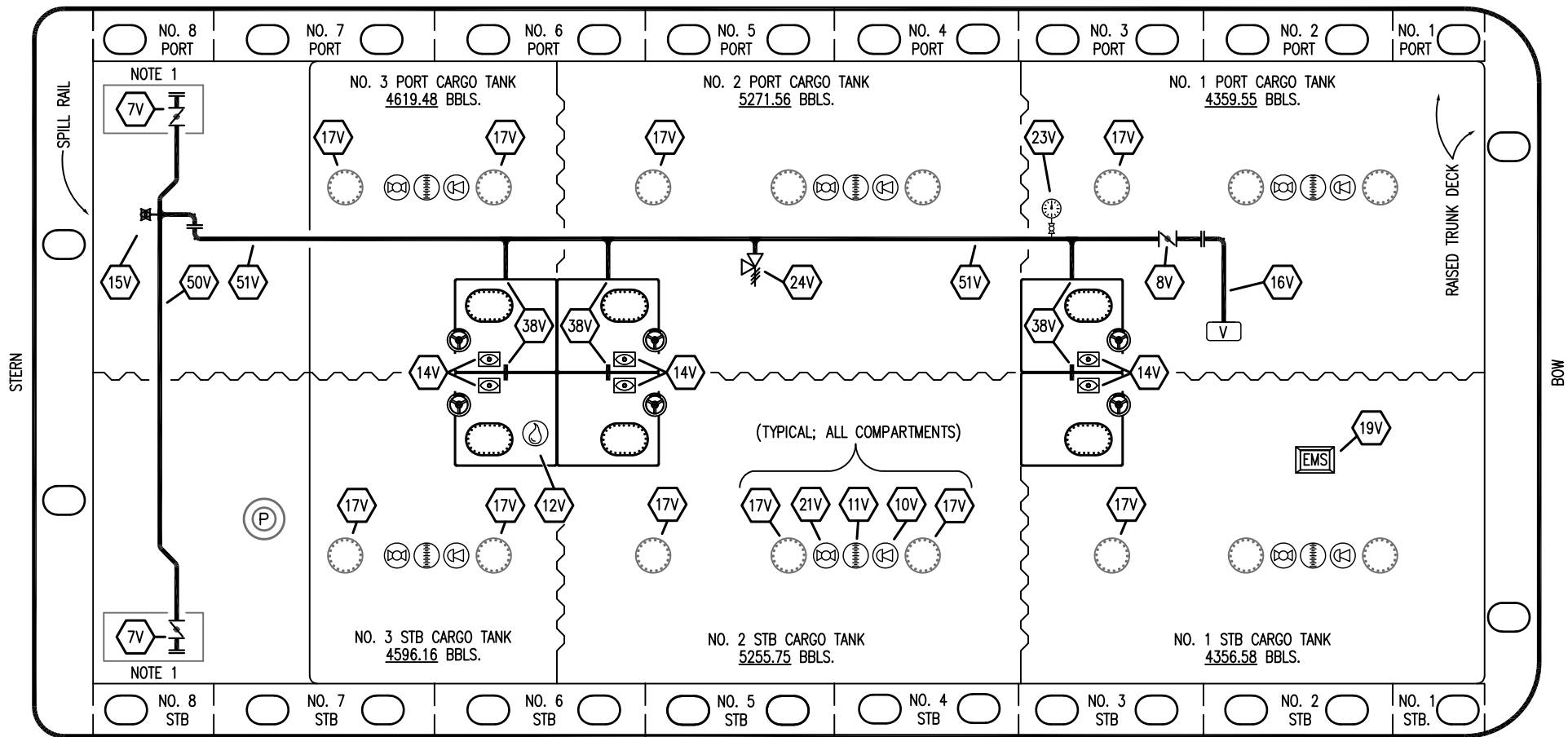
**KIRBY INLAND MARINE** 

**CARGO  
PIPING FLOW DIAGRAM**

SCALE: NONE  
PAGE: 1 OF 3

**KIRBY 28150**

REV. **2**




- |     |                           |     |   |
|-----|---------------------------|-----|---|
| NO  | DESCRIPTION               | NO  | DESCRIPTION                             |
| 7V  | 8" HEADER VALVE           | 23V | GAUGE                                   |
| 8V  | 8" VENT STACK VALVE       | 24V | 6" PRESSURE RELIEF VALVE, HIGH VELOCITY |
| 10V | HIGH LEVEL/OVERFILL ALARM | 38V | 10" VAPOR PENETRATION                   |
| 11V | 1 METER GAUGE STICK       | 50V | VAPOR HEADER                            |
| 12V | 2" HERMETIC SAMPLE        | 51V | VAPOR PIPELINE                          |
| 14V | 8" SIGHT GLASS            | —   | ABOVE DECK PIPING                       |
| 15V | INSPECTION PORT           |     |   |
| 16V | 8" VAPOR VENT STACK       |     |   |
| 19V | EMERGENCY SHUTDOWN SYSTEM |     |   |
| 21V | HERMETIC GAUGE            |     |   |
| 17V | 20" BUTTERWORTH           |     |   |

NOTE 1: CONTAINMENT P/S

WEST GULF MARINE

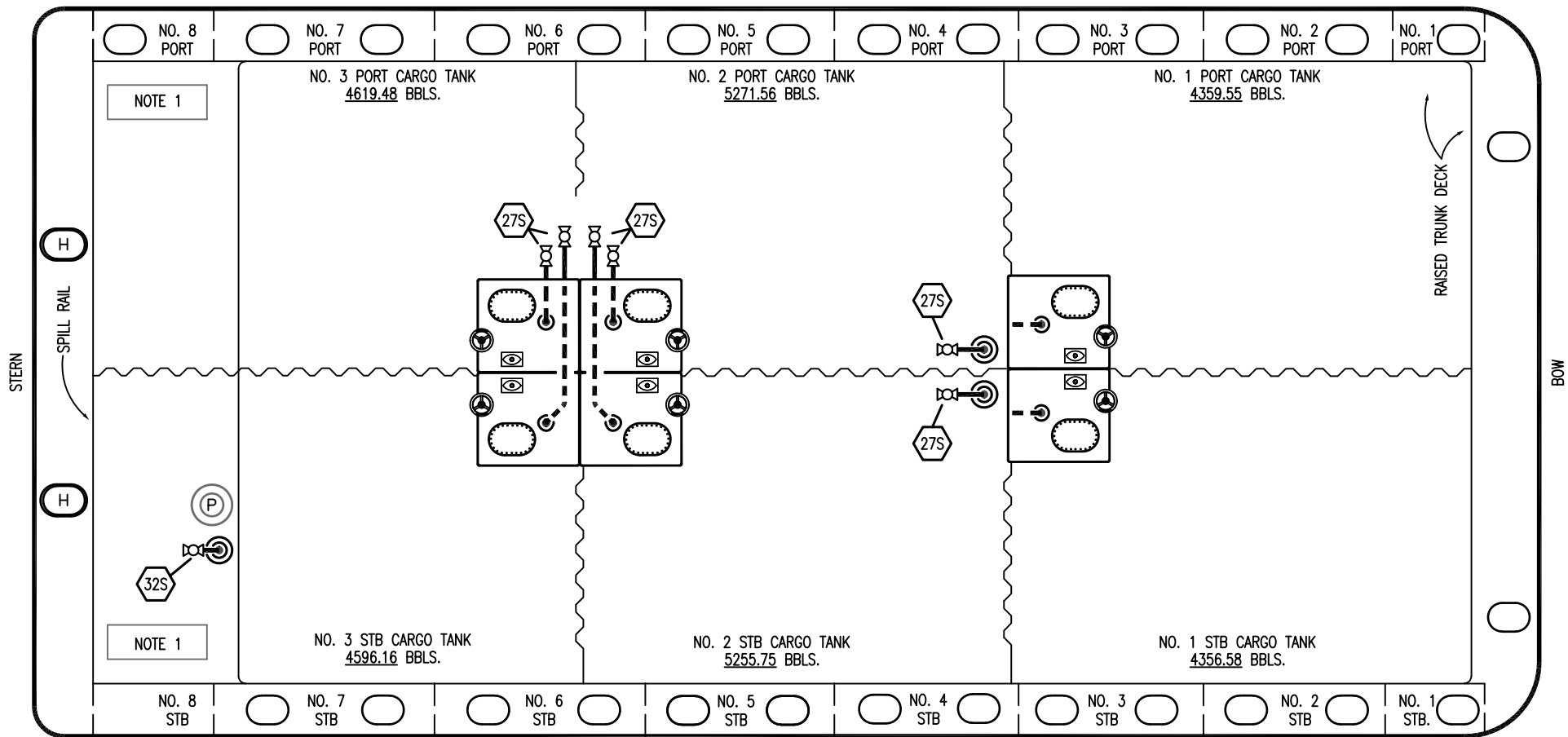
REV.	DATE	BY	CHK	APP	REVISION DESCRIPTION
2	11/16/22	MRV	DDA	LEP	REVISED PER CLIENT COMMENTS
1	05/07/14	DDA	DDA	OF	REVISED PER CLIENT COMMENTS
0	02/03/12	DCB	DDA		ISSUED FOR APPROVAL



# KIRBY INLAND MARINE

## VAPOR PIPING FLOW DIAGRAM

SCALE: NONE	<b>KIRBY 28150</b>	REV. <b>2</b>
PAGE: 2 OF 3		



- | NO  | DESCRIPTION                |
|-----|----------------------------|
| 18S | TYP. STRIPPING PENETRATION |
| 27S | SUMP SUCTION               |
| 32S | PUMP WELL PRIMER VALVE     |
| 33S | PUMP WELL SUCTION          |
| 40S | CARGO TANK SUCTION         |
|     | ABOVE DECK PIPING          |
|     | BELOW DECK PIPING          |

NOTE 1: CONTAINMENT P/S

WEST GULF MARINE

REV.	DATE	BY	CHK	APP	REVISION DESCRIPTION
1	11/16/22	MRV	DDA	LEP	REVISED PER CLIENT COMMENTS
0	02/03/12	DCB	DDA		ISSUED FOR APPROVAL

<b>KIRBY INLAND MARINE</b>	
<b>STRIPPING</b>	
<b>PIPING FLOW DIAGRAM</b>	
SCALE: NONE	<b>KIRBY 28150</b>
PAGE: 3 OF 3	
REV. <b>1</b>	