


- | | | | |
|-----|--------------------------|-------|-----------------------|
| NO | DESCRIPTION | NO | DESCRIPTION |
| 1C | 8" CARGO TANK VALVE | 13C | CARGO BLOCK VALVE |
| 2C | 8" LOAD VALVE | 15C | 2" CHECK BYPASS VALVE |
| 3C | 12" MASTER SUCTION VALVE | 19C | 8" CARGO HEADER |
| 4C | 8" DISCHARGE VALVE | 24C | FLOW INDICATOR |
| 5C | 8" HEADER VALVE | 30C | 12" CARGO PIPELINE |
| 6C | 8" SALVAGE SPOOL PIECE | 37C | CARGO DROP |
| 8C | 6" RELIEF VALVE | — | — ABOVE DECK PIPING |
| 9C | 8" CHECK VALVE | - - - | BELOW DECK PIPING |
| 10C | BURP VALVE | | |

NOTE 1: CONTAINMENT P/S

WEST GULF MARINE

REV.	DATE	BY	CHK	APP	REVISION DESCRIPTION
1	08/18/17	WFB	DDA		ADDED 13C BLOCK VALVE TAG
0	06/29/11	JN	DDA	OF	APPROVED



KIRBY INLAND MARINE

CARGO

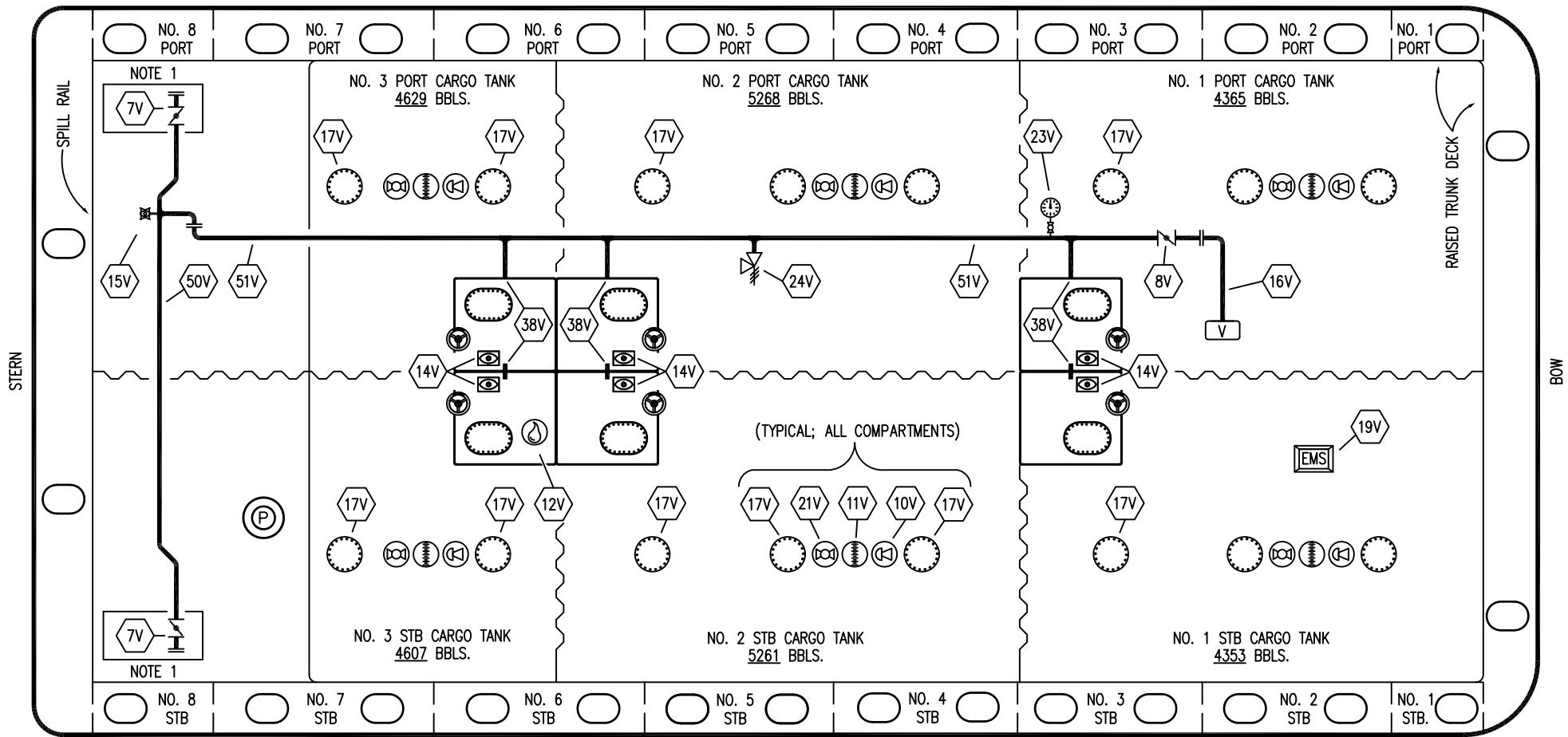
PIPING FLOW DIAGRAM

KIRBY 28147

SCALE: NONE

PAGE: 1 OF 3

REV. **1**



- | | | | |
|-----|---------------------------|-----|---|
| NO | DESCRIPTION | NO | DESCRIPTION |
| 7V | 8" HEADER VALVE | 21V | HERMETIC GAUGE |
| 8V | 8" VENT STACK VALVE | 17V | 20" BUTTERWORTH |
| 10V | HIGH LEVEL/OVERFILL ALARM | 23V | GAUGE |
| 11V | 1 METER GAUGE STICK | 24V | 6" PRESSURE RELIEF VALVE, HIGH VELOCITY |
| 12V | 2" HERMETIC SAMPLE | 38V | 10" VAPOR PENETRATION |
| 14V | 8" SIGHT GLASS | 50V | VAPOR HEADER |
| 15V | INSPECTION PORT | 51V | VAPOR PIPELINE |
| 16V | 8" VAPOR VENT STACK | — | ABOVE DECK PIPING |
| 19V | EMERGENCY SHUTDOWN SYSTEM | | |

NOTE 1: CONTAINMENT P/S

WEST GULF MARINE

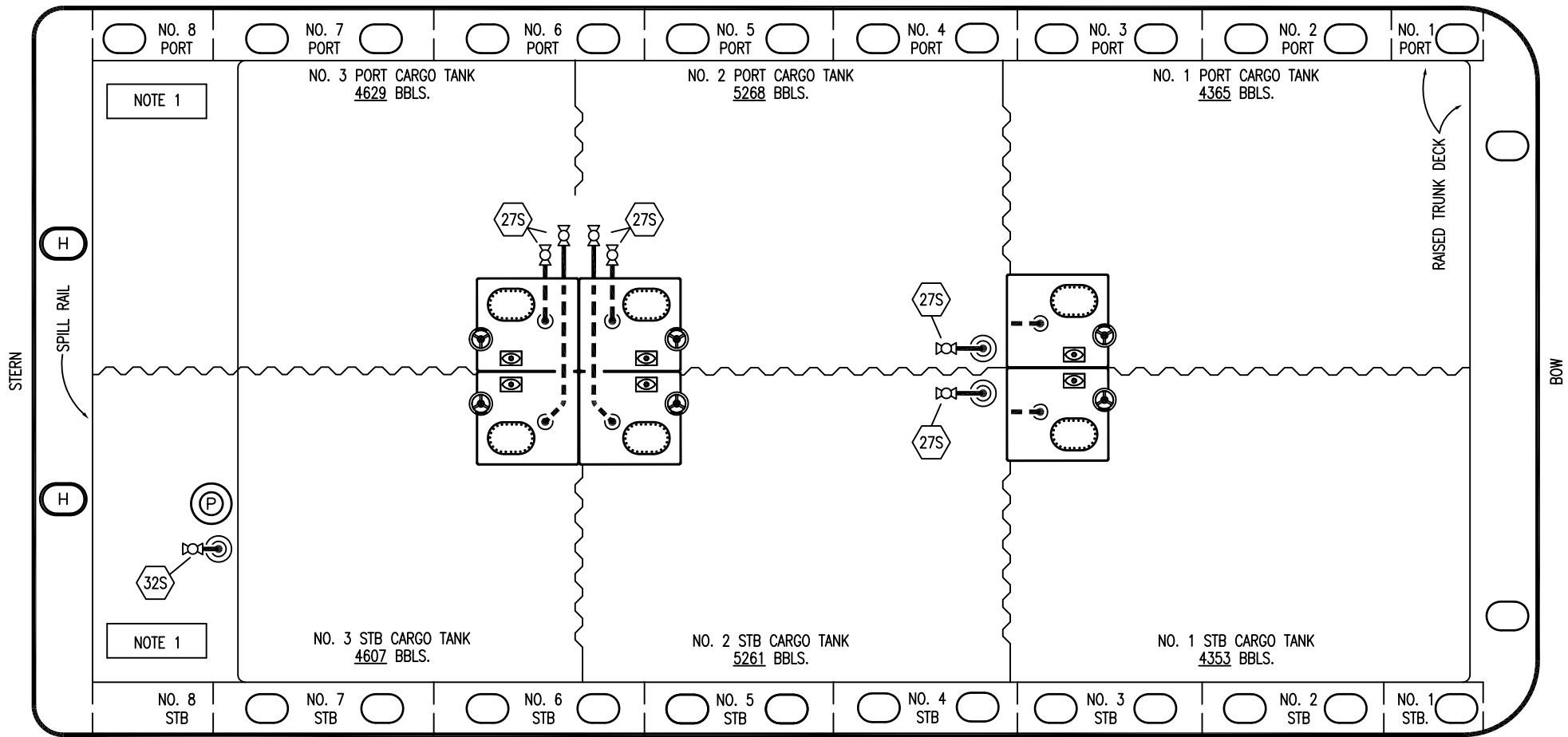
KIRBY INLAND MARINE 

VAPOR PIPING FLOW DIAGRAM

REV.	DATE	BY	CHK	APP	REVISION DESCRIPTION
1	05/07/14	DDA	DDA	OF	REVISED PER CLIENT COMMENTS
0	06/29/11	JN	DDA	OF	APPROVED

SCALE: NONE
PAGE: 2 OF 3

KIRBY 28147 REV. **1**



- | NO | DESCRIPTION |
|-------|--------------------------------|
| 18S | TYP. STRIPPING PENETRATION (⊙) |
| 27S | SUMP SUCTION |
| 32S | PUMP WELL PRIMER VALVE |
| 33S | PUMP WELL SUCTION |
| 40S | CARGO TANK SUCTION |
| — | ABOVE DECK PIPING |
| - - - | BELOW DECK PIPING |

NOTE 1: CONTAINMENT P/S

TRINITY

						KIRBY INLAND MARINE	
						STRIPPING	
						PIPING FLOW DIAGRAM	
0	06/29/11	JN	DDA	OF	APPROVED	SCALE: NONE	KIRBY 28147
REV.	DATE	BY	CHK	APP	REVISION DESCRIPTION	PAGE: 3 OF 3	

REV. **0**