

| NO  | DESCRIPTION          | NO  | DESCRIPTION              |
|-----|----------------------|-----|--------------------------|
| 1C  | CARGO TANK VALVE     | 11C | BLEED OFF VALVE          |
| 2C  | LOAD VALVE           | 13C | CARGO PIPING BLOCK VALVE |
| 3C  | MASTER SUCTION VALVE | 19C | CARGO HEADER             |
| 4C  | DISCHARGE VALVE      | 30C | CARGO PIPELINE           |
| 5C  | HEADER VALVE         | 37C | CARGO DROP               |
| 8C  | RELIEF VALVE         |     |                          |
| 9C  | CHECK VALVE          |     |                          |
| 10C | BURP VALVE           |     |                          |

NOTE 1: CONTAINMENT P/S

— ABOVE DECK PIPING  
 - - - BELOW DECK PIPING

| REV. | DATE     | BY  | CHK | APP | REVISION DESCRIPTION        |
|------|----------|-----|-----|-----|-----------------------------|
| 2    | 10/18/22 | MRV | DDA | LEP | REVISED PER CLIENT COMMENTS |
| 1    | 11/30/16 | WFB | DDA |     | REVISED PER CLIENT COMMENTS |
| 0    | 01/10/10 | RB  | RB  | OF  | FOR APPROVAL                |

TRINITY

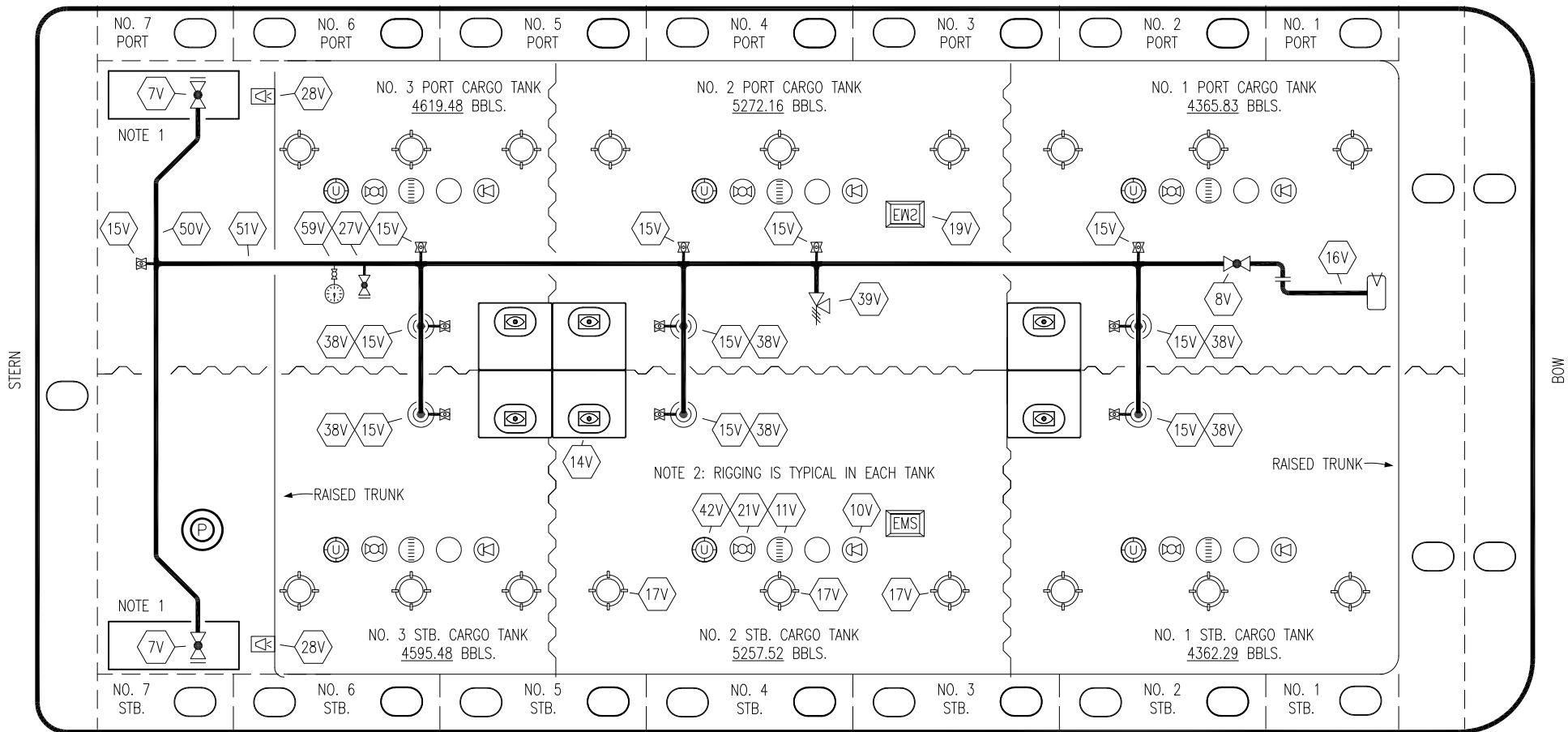
**KIRBY INLAND MARINE**

**CARGO**

**PIPING FLOW DIAGRAM**

|              |                    |        |
|--------------|--------------------|--------|
| SCALE: NONE  | <b>KIRBY 28140</b> | REV. 2 |
| PAGE: 1 OF 3 |                    |        |

PORT



STERN

BOW

STARBOARD

| NO  | DESCRIPTION                  | NO  | DESCRIPTION                |
|-----|------------------------------|-----|----------------------------|
| 7V  | 8" HEADER VALVE              | 21V | 2" HERMETIC GAUGE          |
| 8V  | 8" VENT STACK VALVE          | 27V | 1/4" TEST CONNECTION VALVE |
| 10V | 8" HIGH LEVEL/OVERFILL ALARM | 28V | DOCK CONNECTION ALARM      |
| 11V | 8" 1-METER STICK GAUGE       | 38V | 8" VAPOR PENETRATION       |
| 14V | 6" SIGHT GLASS W/GAUGE TREE  | 39V | PRESS/VAC RELIEF VALVE     |
| 15V | 2" INSPECTION PORT           | 42V | 8" ULLAGE HATCH            |
| 16V | 8" VAPOR VENT STACK          | 50V | 8" VAPOR HEADER            |
| 17V | 14" BUTTERWORTH              | 51V | 8" VAPOR PIPELINE          |
| 18V | 2" RESTRICTIVE GAUGE TUBE    | 59V | PRESS/VAC GAUGE            |
| 19V | EMERGENCY ENGINE SHUT DOWN   | —   | — ABOVE DECK PIPING        |

NOTE 1: CONTAINMENT P/S

NOTE 2: RIGGING IS TYPICAL IN EACH TANK

TRINITY

| REV. | DATE     | BY  | CHK | APP | REVISION DESCRIPTION        |
|------|----------|-----|-----|-----|-----------------------------|
| 1    | 10/18/22 | MRV | DDA | LEP | REVISED PER CLIENT COMMENTS |
| 0    | 01/10/11 | RB  | RB  | OF  | FOR APPROVAL                |

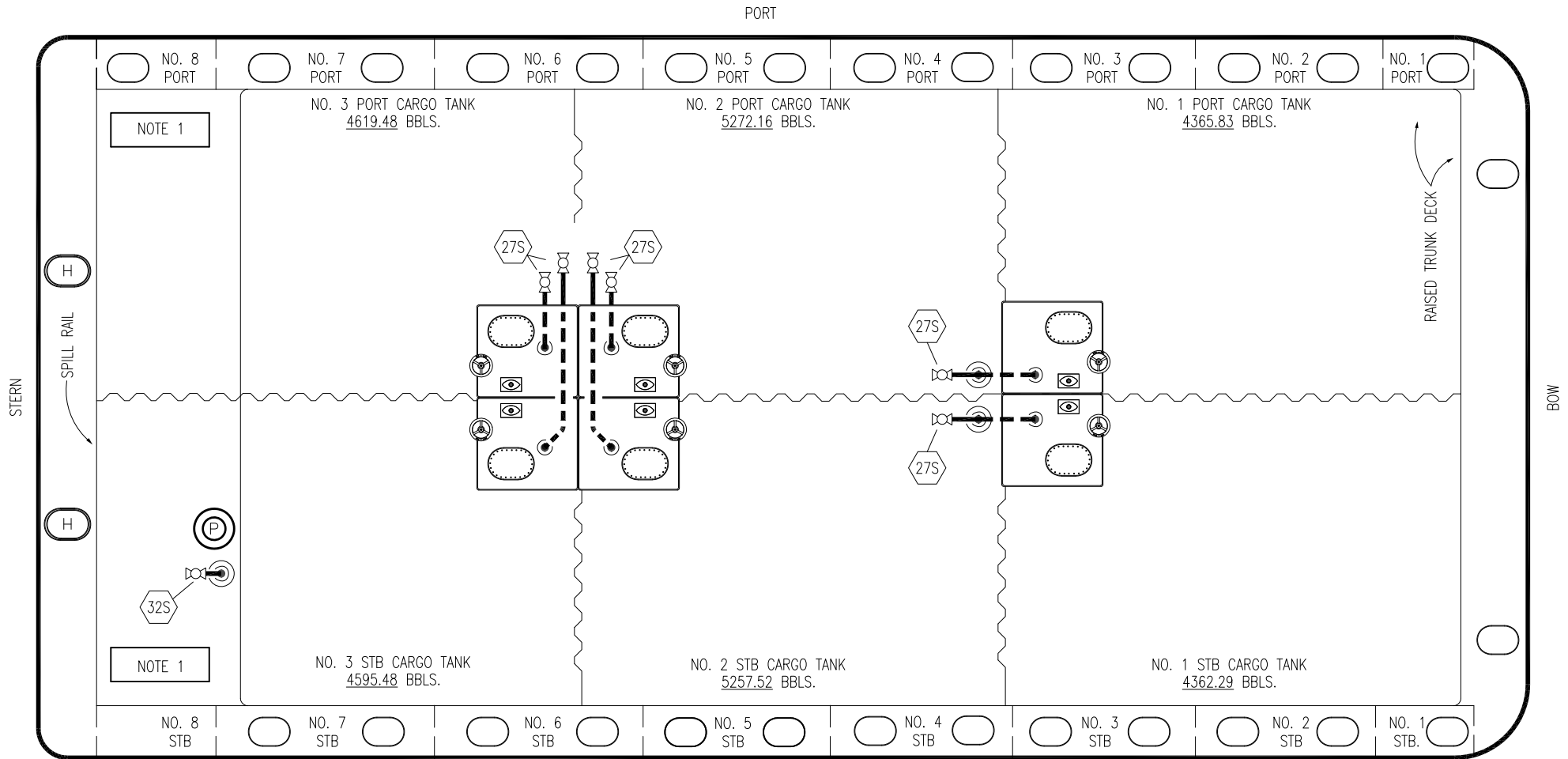
KIRBY INLAND MARINE 

**VAPOR  
PIPING FLOW DIAGRAM**

SCALE: NONE  
PAGE: 2 OF 3

**KIRBY 28140**

REV. **1**



- |     |                                |
|-----|--------------------------------|
| NO  | DESCRIPTION                    |
| 18S | TYP. STRIPPING PENETRATION (⊙) |
| 27S | SUMP SUCTION                   |
| 32S | PUMP WELL PRIMER VALVE         |
|     | ABOVE DECK PIPING              |
|     | BELOW DECK PIPING              |

NOTE 1: CONTAINMENT P/S

TRINITY

| REV. | DATE     | BY  | CHK | APP | REVISION DESCRIPTION        |
|------|----------|-----|-----|-----|-----------------------------|
| 2    | 10/18/22 | MRV | DDA | LEP | REVISED PER CLIENT COMMENTS |
| 1    | 06/30/11 | JN  | DDA |     | REVISED SUCTION VALVES      |
| 0    | 03/30/11 | DCB | DDA | OF  | FOR REVIEW                  |

|  |                    |
|--|--------------------|
|  |                    |
| <b>STRIPPING</b><br><b>PIPING FLOW DIAGRAM</b> |                    |
| SCALE: NONE                                    | <b>KIRBY 28140</b> |
| PAGE: 3 OF 3                                   |                    |
|  | <b>REV. 2</b>      |