

- | | | | |
|-----------|--------------------------|-----------|-------------------------|
| NO | DESCRIPTION | NO | DESCRIPTION |
| 1C | 8" CARGO TANK VALVE | 15C | 2" CHECK BYPASS VALVE |
| 2C | 8" LOAD VALVE | 19C | 8" CARGO HEADER |
| 3C | 12" MASTER SUCTION VALVE | 24C | FLOW INDICATOR |
| 4C | 8" DISCHARGE VALVE | 30C | 12" CARGO PIPELINE |
| 5C | 8" HEADER VALVE | 37C | CARGO DROP |
| 8C | 6" RELIEF VALVE | — | — ABOVE DECK PIPING |
| 9C | 8" CHECK VALVE | - - - | - - - BELOW DECK PIPING |
| 10C | BURP VALVE | | |

NOTE 1: CONTAINMENT P/S

WEST GULF MARINE

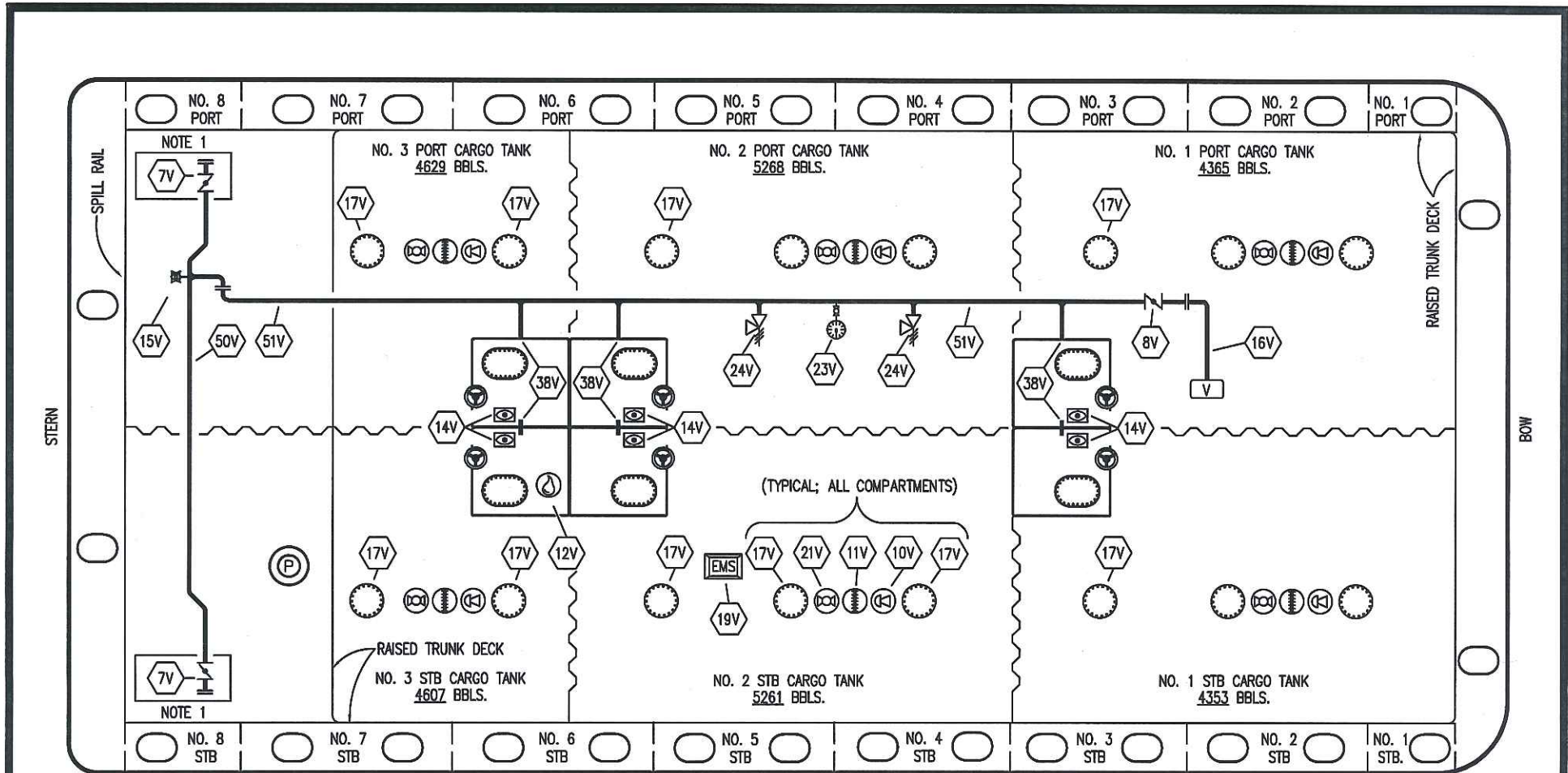
KIRBY INLAND MARINE 

CARGO
PIPING FLOW DIAGRAM

REV.	DATE	BY	CHK	APP	REVISION DESCRIPTION
3	01/15/18	WFB	DDA		REVISED PER CLIENT COMMENTS
2	08/13/09	RB	RB	AB	REMOVE SALVAGE VALVE
1	05/19/09	RB	RB	AB	CHANGE BARREL CAP.
0	04/20/09	WK	RB	AB	APPROVED

SCALE: NONE
PAGE: 1 OF 3

KIRBY 28134 **REV. 3**



NO	DESCRIPTION
7V	8" HEADER VALVE
8V	8" VENT STACK VALVE
10V	HIGH LEVEL/OVERFILL ALARM
11V	1 METER GAUGE STICK
12V	2" HERMETIC SAMPLE
14V	8" SIGHT GLASS
15V	INSPECTION PORT
16V	8" VAPOR VENT STACK
19V	EMERGENCY SHUTDOWN SYSTEM
21V	HERMETIC GAUGE
17V	20" BUTTERWORTH

NO	DESCRIPTION
23V	GAUGE
24V	6" PRESSURE RELIEF VALVE, HIGH VELOCITY
38V	10" VAPOR PENETRATION
50V	VAPOR HEADER
51V	VAPOR PIPELINE
—	ABOVE DECK PIPING

NOTE 1: CONTAINMENT P/S

WEST GULF MARINE

REV.	DATE	BY	CHK	APP	REVISION DESCRIPTION
2	01/15/18	WFB	DDA		REVISED PER CLIENT COMMENTS
1	05/19/09	RB	RB	AB	CHANGE BARREL CAP.
0	04/20/09	WK	RB	AB	APPROVED



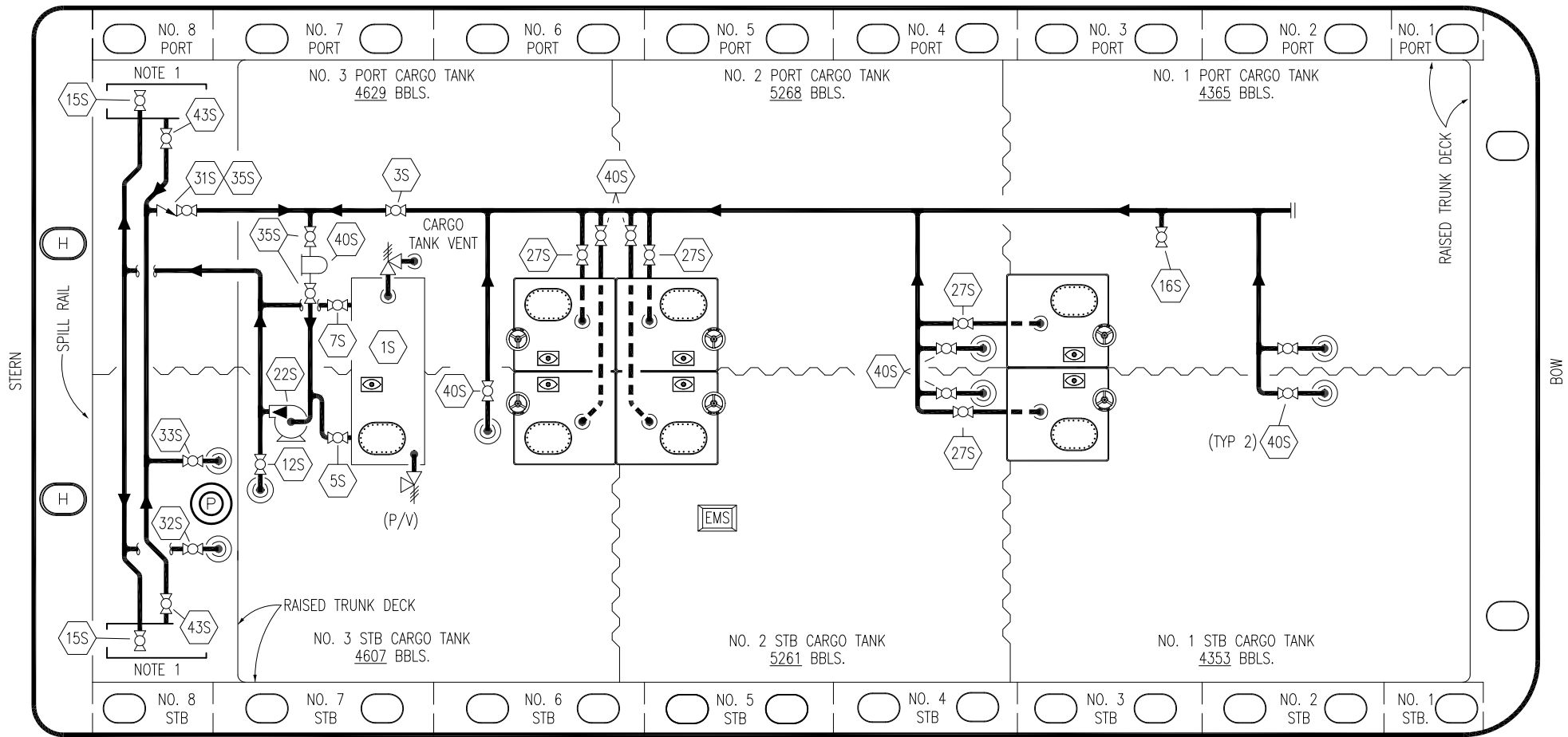
KIRBY INLAND MARINE

VAPOR

PIPING FLOW DIAGRAM

KIRBY 28134

SCALE: NONE	REV. 2
PAGE: 2 OF 3	



NO	DESCRIPTION	NO	DESCRIPTION
1S	SLOP TANK	31S	CHECK VALVE
3S	VALVE MAIN CARGO PIPING	32S	PUMP WELL PRIMER VALVE
5S	SLOP TANK SUCTION VALVE	33S	PUMP WELL SUCTION
7S	SLOP TANK DISCHARGE VALVE	35S	STRIPPING VALVE
12S	RETURN TO CARGO TANK VALVE	40S	CARGO TANK SUCTION
15S	DISCHARGE CARGO VALVE	43S	DRIP PAN SUCTION VALVE
16S	REMOTE SUCTION CONNECTION	44S	STRIPPING PUMP SUCTION
18S	TYP. STRIPPING PENETRATION	—	—
22S	STRIPPING PUMP	—	—
24S	BASKET STRAINER	—	—
27S	SUMP SUCTION	—	—

NOTE 1: CONTAINMENT P/S

REV.	DATE	BY	CHK	APP	REVISION DESCRIPTION
3	08/27/19	MRV	DDA		REVISED PER CLIENT COMMENTS
2	01/15/18	WFB	DDA		REVISED PER CLIENT COMMENTS
1	05/19/09	RB	RB	AB	CHANGE BARREL CAP.
0	04/20/09	WK	RB	AB	APPROVED

KIRBY INLAND MARINE

**STRIPPING
PIPING FLOW DIAGRAM**

SCALE: NONE
PAGE: 3 OF 3

KIRBY 28134 REV. **3**

WEST GULF MARINE