

NOTE 1: CONTAINMENT P/S

- | | | | |
|-----|--------------------------|-----|-----------------------|
| NO | DESCRIPTION | NO | DESCRIPTION |
| 1C | 8" CARGO TANK VALVE | 15C | 2" CHECK BYPASS VALVE |
| 2C | 8" LOAD VALVE | 19C | 8" CARGO HEADER |
| 3C | 12" MASTER SUCTION VALVE | 24C | FLOW INDICATOR |
| 4C | 8" DISCHARGE VALVE | 30C | 12" CARGO PIPELINE |
| 5C | 8" HEADER VALVE | 37C | CARGO DROP |
| 8C | 6" RELIEF VALVE | --- | ABOVE DECK PIPING |
| 9C | 8" CHECK VALVE | --- | BELOW DECK PIPING |
| 10C | BURP VALVE | | |

KIRBY INLAND MARINE

CARGO

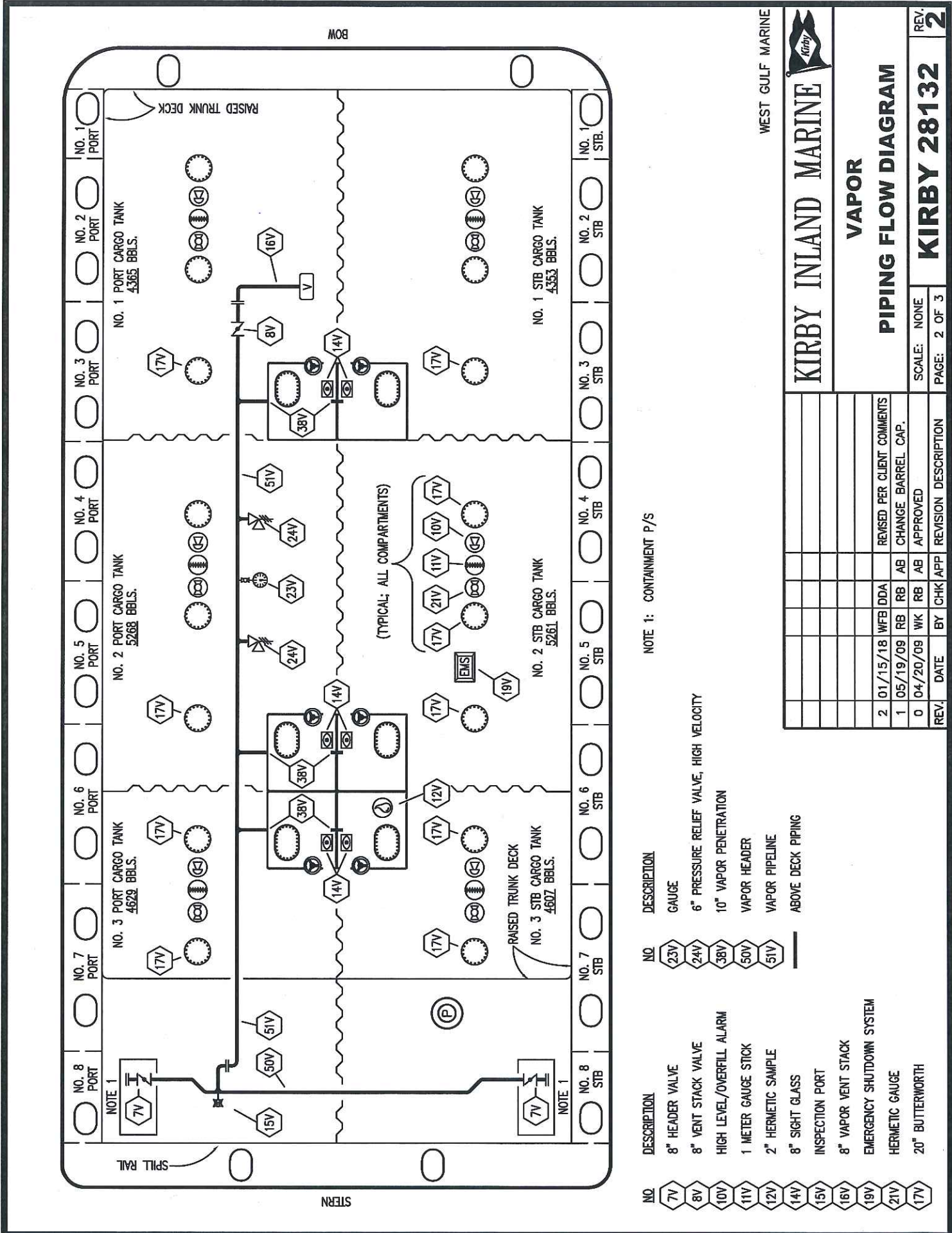
PIPING FLOW DIAGRAM

REV.	DATE	BY	CHK APP	REVISION DESCRIPTION
3	01/15/18	WFB	DDA	REVISED PER CLIENT COMMENTS
2	08/13/09	RB	AB	REMOVE SALVAGE VALVE
1	05/19/09	RB	AB	CHANGE BARREL CAP.
0	04/20/09	WK	RB	APPROVED

SCALE: NONE
PAGE: 1 OF 3

REV. **3**

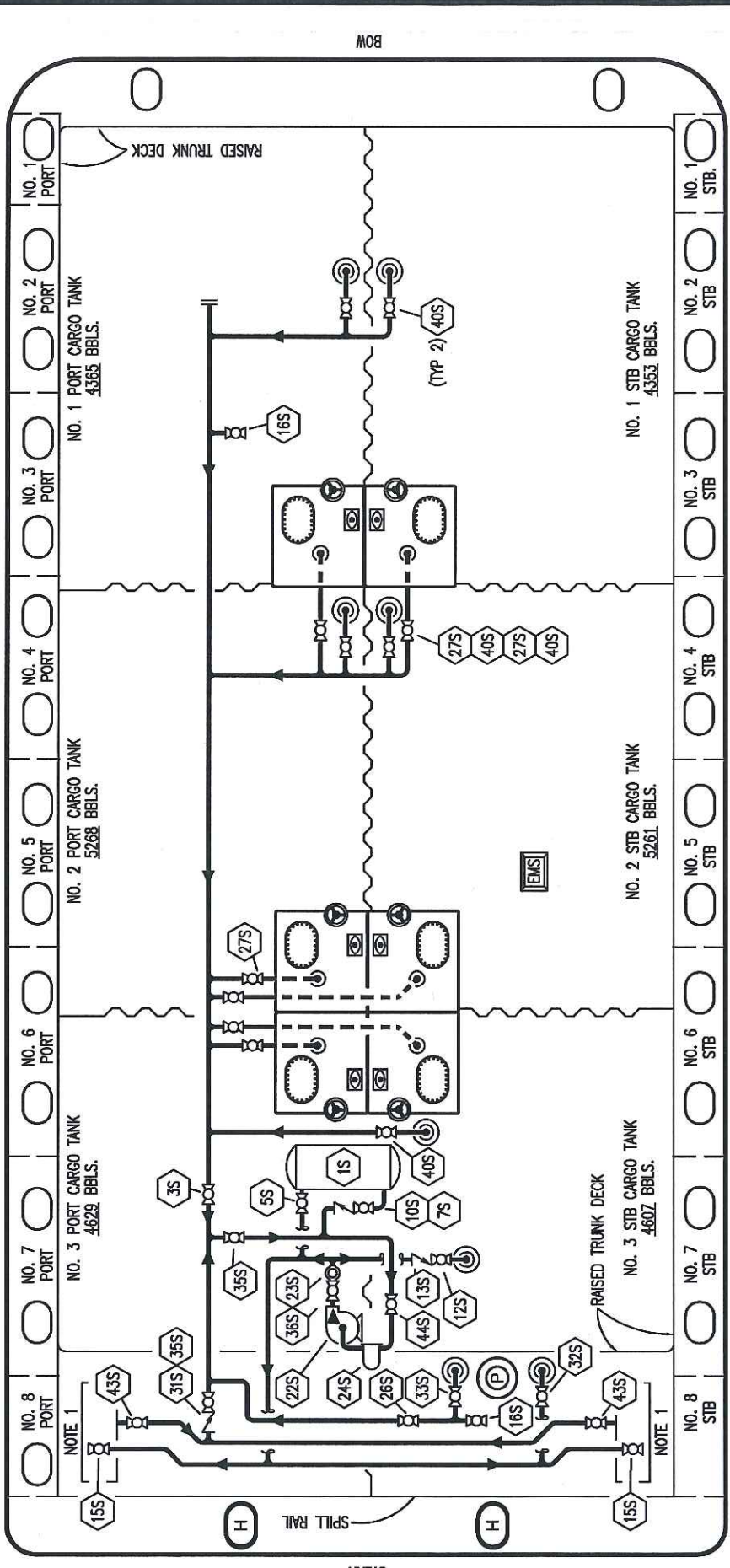
KIRBY 28132



NO.	DESCRIPTION	NO.	DESCRIPTION
7V	8" HEADER VALVE	23V	GAUGE
8V	8" VENT STACK VALVE	24V	6" PRESSURE RELIEF VALVE, HIGH VELOCITY
10V	HIGH LEVEL/OVERFILL ALARM	38V	10" VAPOR PENETRATION
11V	1 METER GAUGE STICK	50V	VAPOR HEADER
12V	2" HERMETIC SAMPLE	51V	VAPOR PIPELINE
14V	8" SIGHT GLASS		ABOVE DECK PIPING
15V	INSPECTION PORT		
16V	8" VAPOR VENT STACK		
19V	EMERGENCY SHUTDOWN SYSTEM		
21V	HERMETIC GAUGE		
17V	20" BUTTERWORTH		

NOTE 1: CONTAINMENT P/S

REV.	DATE	BY	CHK APP	REVISION DESCRIPTION
2	01/15/18	WFB	DDA	REVISED PER CLIENT COMMENTS
1	05/19/09	RB	AB	CHANGE BARREL CAP.
0	04/20/09	WK	RB	APPROVED



NO. 1 PORT CARGO TANK
4365 BBLs.

NO. 2 PORT CARGO TANK
5268 BBLs.

NO. 3 PORT CARGO TANK
4629 BBLs.

NO. 1 STB CARGO TANK
4353 BBLs.

NO. 2 STB CARGO TANK
5261 BBLs.

NO. 3 STB CARGO TANK
4607 BBLs.

NO. 1 PORT

NO. 2 PORT

NO. 3 PORT

NO. 4 PORT

NO. 5 PORT

NO. 6 PORT

NO. 7 PORT

NO. 8 PORT

NO. 1 STB

NO. 2 STB

NO. 3 STB

NO. 4 STB

NO. 5 STB

NO. 6 STB

NO. 7 STB

NO. 8 STB

NOTE 1: CONTAINMENT P/S

— ABOVE DECK PIPING

- - - BELOW DECK PIPING

NO. 15S SLOP TANK

NO. 25 VALVE CARGO TANK

NO. 3S VALVE MAIN CARGO PIPING

NO. 5S SLOP TANK SUCTION VALVE

NO. 7S SLOP TANK VALVE

NO. 10S SLOP TANK CHECK VALVE

NO. 12S RETURN TO CARGO TANK VALVE

NO. 13S RETURN TO CARGO CHECK VALVE

NO. 15S DISCHARGE CARGO VALVE

NO. 16S REMOTE SUCTION CONNECTION

NO. 18S TYP. STRIPPING PENETRATION

NO. 22S STRIPPING PUMP

NO. 23S FLOW INDICATOR

NO. 24S BASKET STRAINER

NO. 26S STRIPPING HEADER BLOCK VALVE

NO. 27S SUMP SUCTION

NO. 31S CHECK VALVE

NO. 32S PUMP WELL PRIMER VALVE

NO. 33S PUMP WELL SUCTION

NO. 35S STRIPPING VALVE

NO. 36S STRIPPING PUMP DISCHARGE

NO. 40S CARGO TANK SUCTION

NO. 43S DRIP PAN SUCTION VALVE

NO. 44S STRIPPING PUMP SUCTION

WEST GULF MARINE

KIRBY INLAND MARINE

STRIPPING

PIPING FLOW DIAGRAM

KIRBY 28132

SCALE: NONE PAGE: 3 OF 3

REV. 2

REV.	DATE	BY	CHK	APP	REVISION DESCRIPTION
2	01/15/18	WFBI	DDA		REVISED PER CLIENT COMMENTS
1	05/19/09	RB	RB	AB	CHANGE_BARREL_CAP.
0	04/20/09	WK	RB	AB	APPROVED