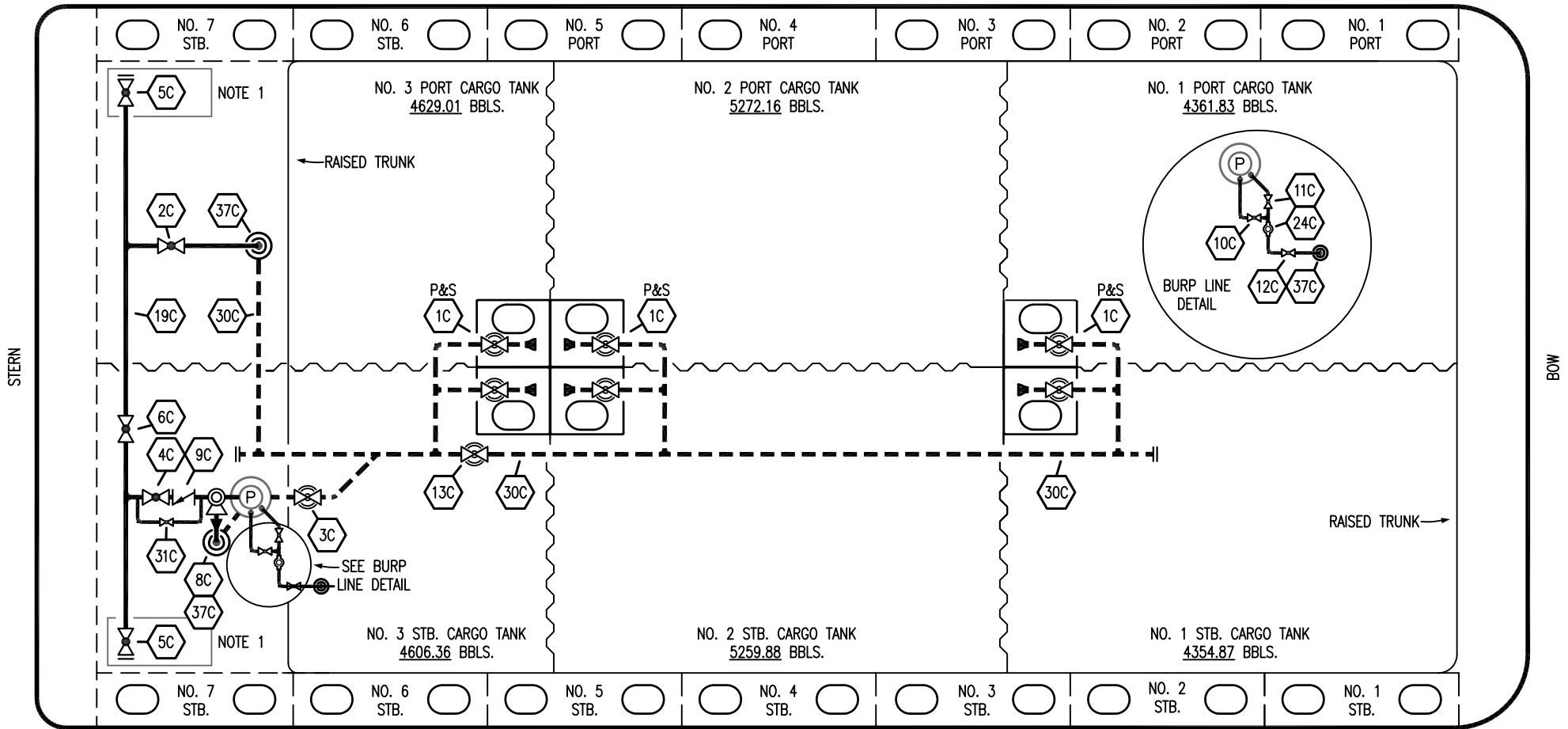


PORT



STARBOARD

NO	DESCRIPTION	NO	DESCRIPTION
1C	CARGO TANK VALVE	12C	BURP VALVE RETURN TO CARGO TANK
2C	LOAD VALVE	13C	CARGO PIPING BLOCK VALVE
3C	MASTER SUCTION VALVE	19C	CARGO HEADER
4C	DISCHARGE VALVE	24C	PIPE FLOW INDICATOR
5C	HEADER VALVE	30C	CARGO PIPELINE
6C	SALVAGE VALVE	31C	BYPASS VALVE
8C	RELIEF VALVE	37C	CARGO DROP
9C	CHECK VALVE	—	— ABOVE DECK PIPING
10C	BURP VALVE	---	--- BELOW DECK PIPING
11C	BLEED OFF VALVE		

NOTE 1: CONTAINMENT P/S

WEST GULF MARINE -- EX: N/A

REV.	DATE	BY	CHK	APP	REVISION DESCRIPTION
1	12/20/23	MRV	DDA	DAR	REVISED PER CLIENT COMMENTS
0	12/07/09	RB	RB	OF	APPROVED

KIRBY INLAND MARINE

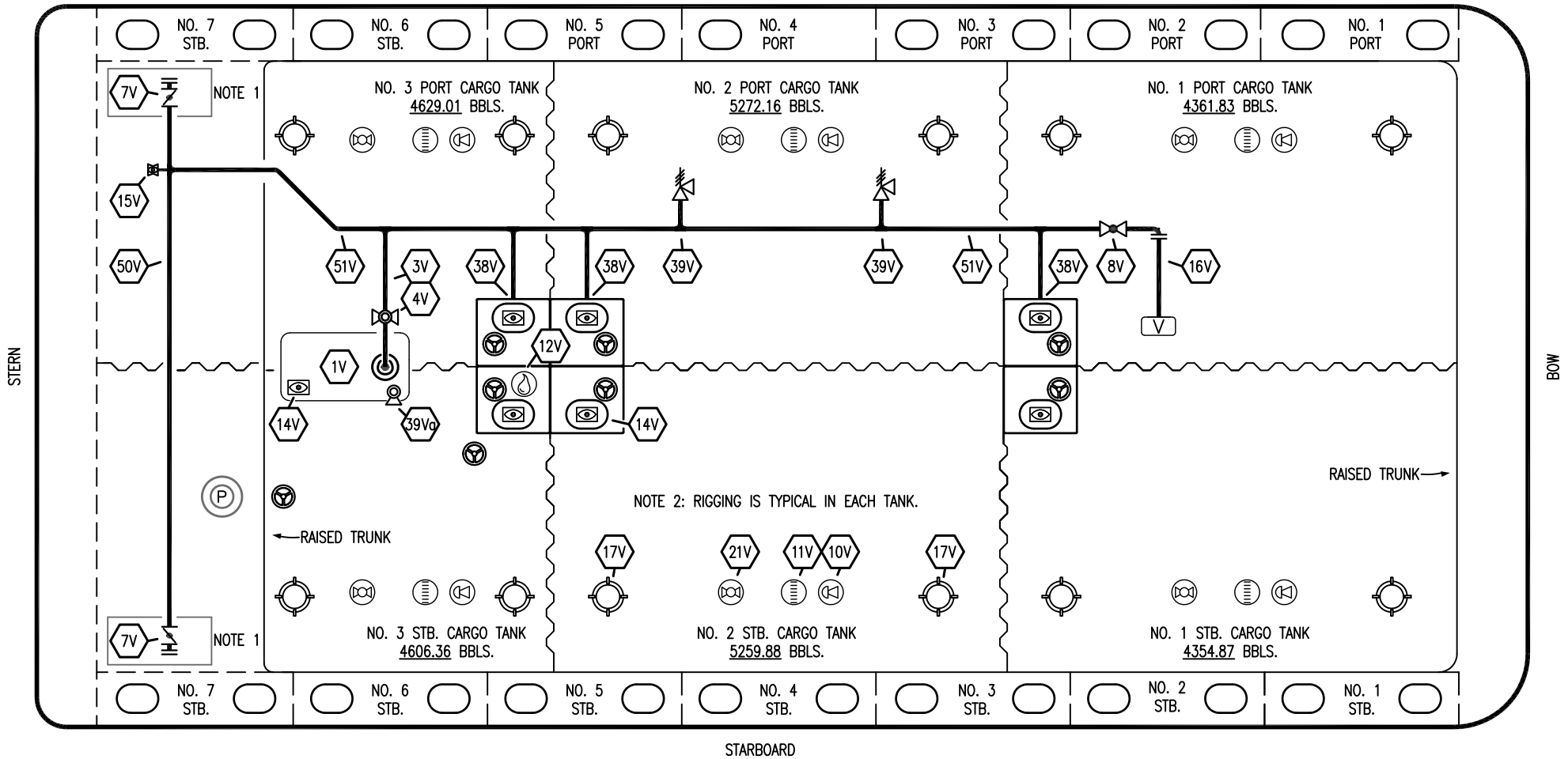
**CARGO
PIPING FLOW DIAGRAM**

SCALE: NONE
PAGE: 1 OF 3

KIRBY 28131

REV. **1**

PORT



NO	DESCRIPTION
1V	3000 GAL. SLOP TANK
3V	SLOP TANK VENT PIPING
4V	SLOP TANK SPEC VENT VALVE
7V	HEADER VALVE
8V	VENT STACK VALVE
11V	1-METER GAUGE STICK
10V	HIGH LEVEL/OVERFILL ALARM
12V	HERMETIC SAMPLE
14V	SIGHT GLASS
15V	INSPECTION PORT

NO	DESCRIPTION
16V	VAPOR VENT STACK
17V	BUTTERWORTH
21V	HERMETIC GAUGE
38V	VAPOR PENETRATION
39V	PRESS/VAC RELIEF VALVE
39Va	PRESS/VAC RELIEF VALVE
50V	VAPOR HEADER
51V	VAPOR PIPELINE
—	ABOVE DECK PIPING

NOTE 1: CONTAINMENT P/S

NOTE 2: RIGGING IS TYPICAL IN EACH TANK.

WEST GULF MARINE -- EX: N/A

REV.	DATE	BY	CHK	APP	REVISION DESCRIPTION
1	12/20/23	MRV	DDA	DAR	REVISED PER CLIENT COMMENTS
0	12/07/09	RB	RB	OF	APPROVED

KIRBY INLAND MARINE 

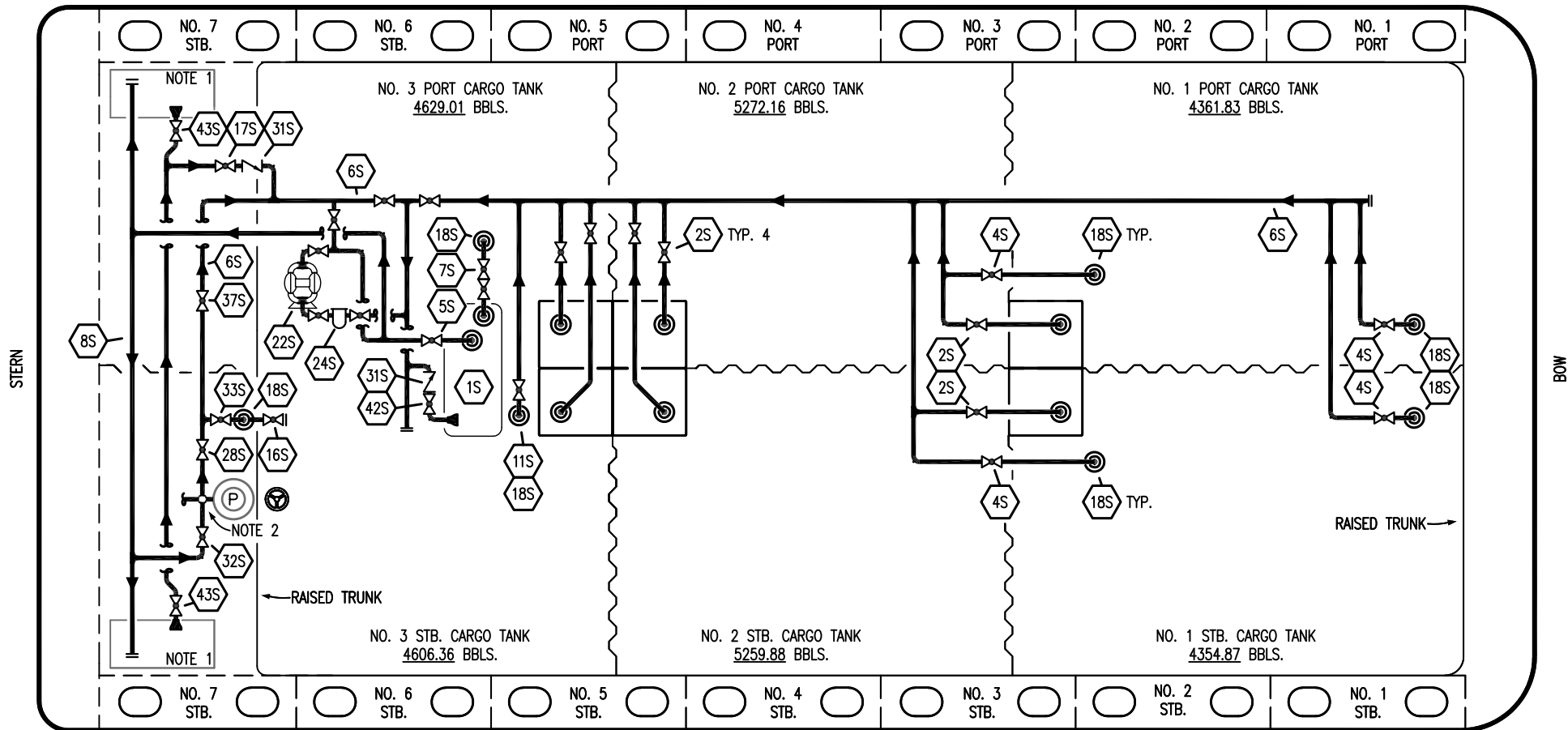
VAPOR PIPING FLOW DIAGRAM


SCALE: NONE
PAGE: 2 OF 3

KIRBY 28131

REV. **1**

PORT



NO	DESCRIPTION
16S	REMOTE SUCTION CONNECTION
17S	FORWARD CARGO TANK ISOLATION
18S	STRIPPING DROP 
22S	STRIPPING PUMP
24S	BASKET STRAINER
28S	CARGO PIPING SUCTION
31S	CHECK VALVE
32S	PUMP WELL PRIMER VALVE
33S	PUMP WELL SUCTION VALVE

NO	DESCRIPTION
37S	BLOCK VALVE
42S	SLOP TANK FILL VALVE
43S	DRIP PAN SUCTION VALVE


— ABOVE DECK PIPING

STARBOARD

NOTE 1: CONTAINMENT P/S
 NOTE 2: 28S & 32S CONNECT TO 8" CARGO PUMP DISCHARGE PIPING.

WEST GULF MARINE – EX: N/A

REV.	DATE	BY	CHK	APP	REVISION DESCRIPTION
1	12/20/23	MRV	DDA	DAR	REVISED PER CLIENT COMMENTS
0	12/07/09	RB	RB	OF	APPROVED

KIRBY INLAND MARINE 

STRIPPING
PIPING FLOW DIAGRAM

KIRBY 28131

REV. 1

SCALE: NONE
PAGE: 3 OF 3