

TRINITY MARINE PRODUCTS

## KIRBY INLAND MARINE

### VAPOR PIPING FLOW DIAGRAM

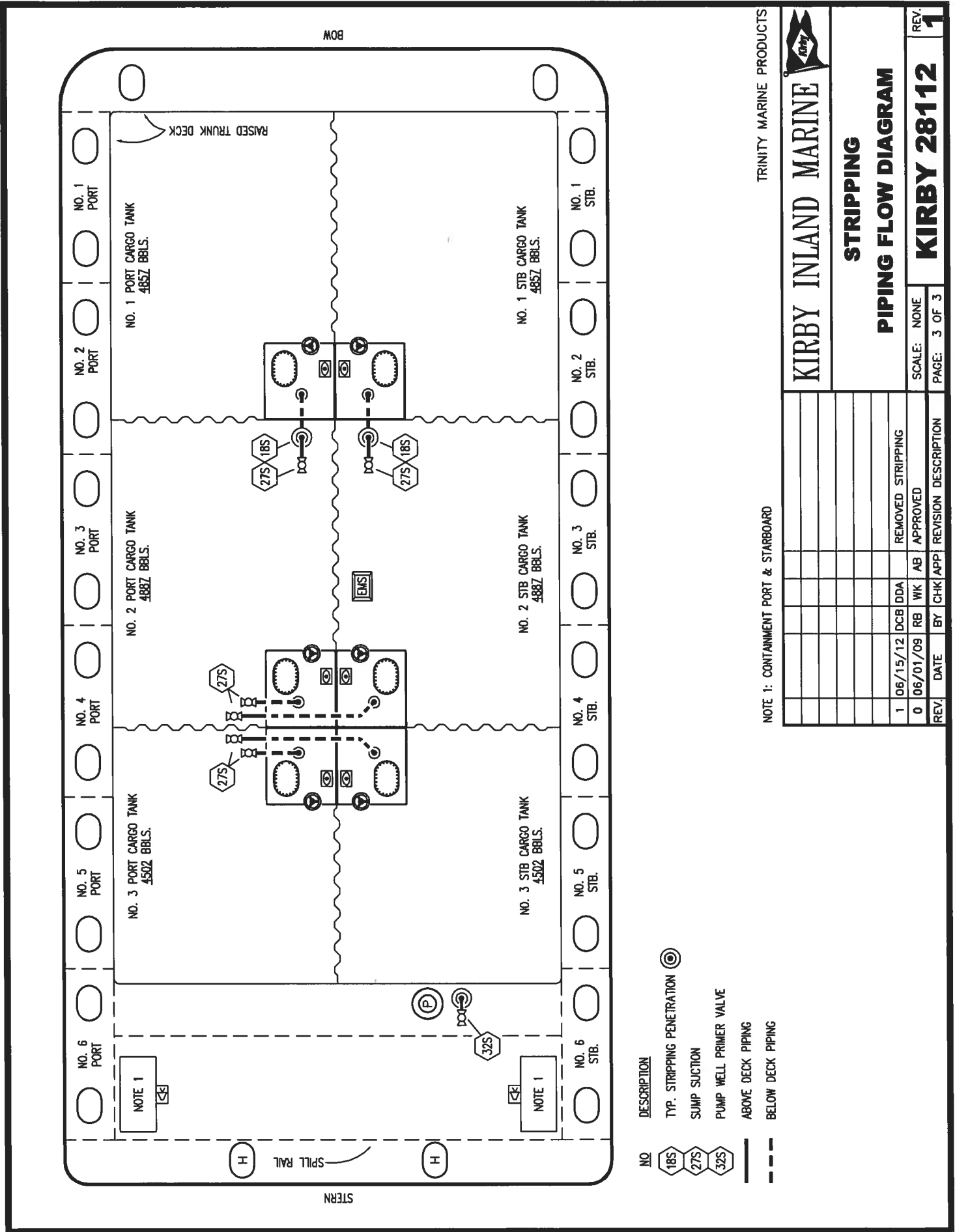
NO.	DESCRIPTION	NO.	DESCRIPTION
7V	8" HEADER VALVE	23V	PRES./VAC GAUGE
8V	8" VENT STACK VALVE	24V	6" PRESSURE RELIEF VALVE, HIGH VELOCITY
10V	HIGH LEVEL/OVERTILL ALARM	28V	DOCK CONNECTION ALARM
11V	1" METER GAUGE STICK	38V	8" VAPOR PENETRATION
14V	8" SIGHT GLASS	45V	19" CLEANOUT HATCH
15V	INSPECTION PORT	50V	8" VAPOR HEADER
16V	8" VAPOR VENT STACK	51V	8" VAPOR PIPELINE
19V	EMERGENCY ENGINE SHUTDOWN		ABOVE DECK PIPING
21V	HERMETIC GAUGE		

NOTE 1: CONTAINMENT P/S

REV.	DATE	BY	CHK	APP	REVISION DESCRIPTION
0	06/01/09	RB	WK	AB	APPROVED

SCALE: NONE  
PAGE: 2 OF 3

REV. 0



TRINITY MARINE PRODUCTS



**STRIPPING**  
**PIPING FLOW DIAGRAM**

NOTE 1: CONTAMNENT PORT & STARBOARD

REV.	DATE	BY	CHK/APP	REVISION DESCRIPTION
1	06/15/12	DCB	DDA	REMOVED STRIPPING
0	06/01/09	RB	WK	AB APPROVED

SCALE: NONE  
PAGE: 3 OF 3  
REV. **1**  
**KIRBY 28112**

- NO** DESCRIPTION
- 18S TYP. STRIPPING PENETRATION
  - 27S SUMP SUCTION
  - 32S PUMP WELL PRIMER VALVE
  - ABOVE DECK PIPING
  - - - BELOW DECK PIPING