

NOTE 1: CONTAINMENT P/S

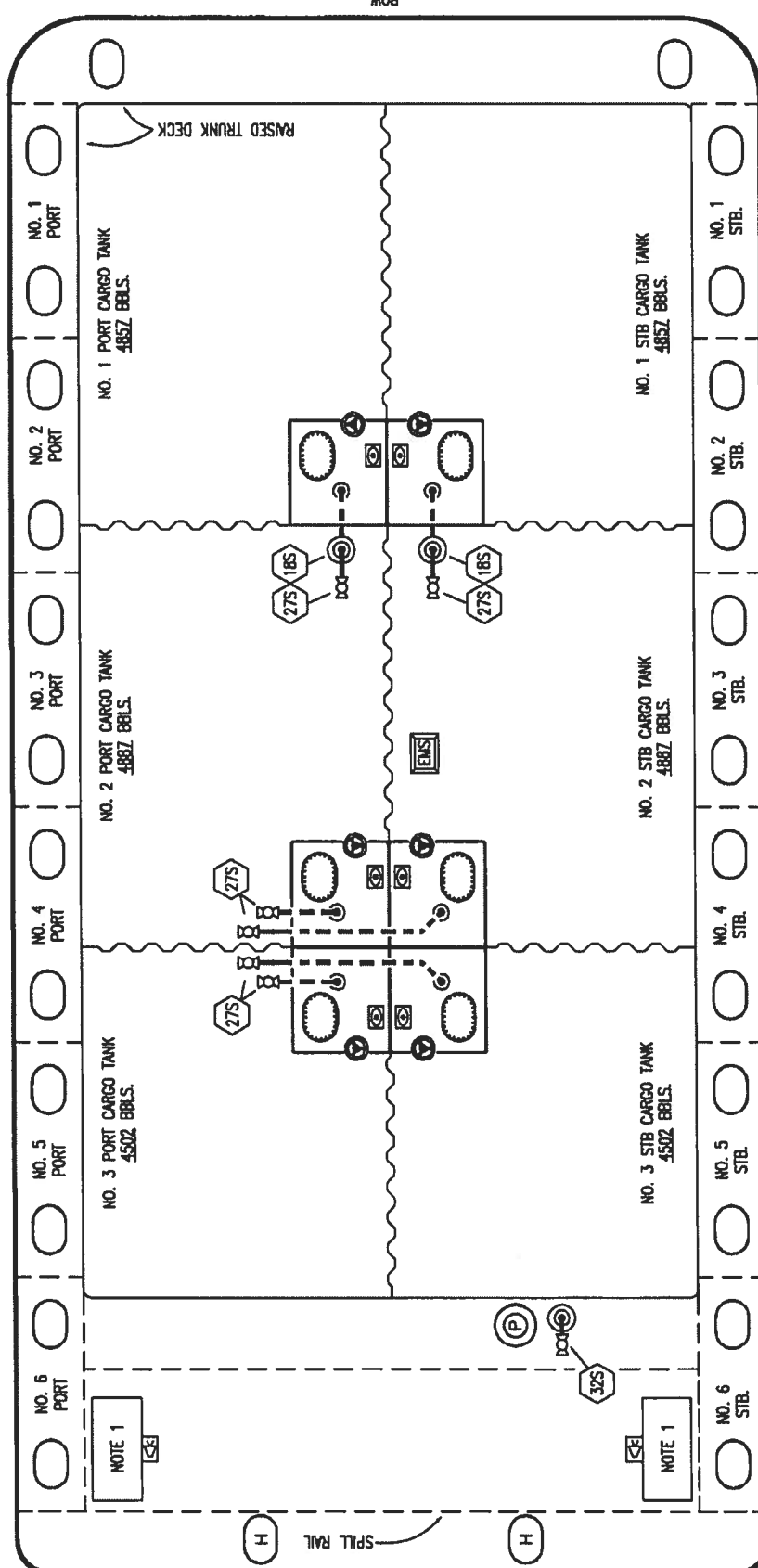
- | | | | |
|---------------------------|-------------|---|-------------|
| NO. 7V | DESCRIPTION | NO. 23V | DESCRIPTION |
| 8" HEADER VALVE | | PRES/VAC GAUGE | |
| 8" VENT STACK VALVE | | 6" PRESSURE RELIEF VALVE, HIGH VELOCITY | |
| HIGH LEVEL/OVERFILL ALARM | | DOCK CONNECTION ALARM | |
| 1 METER GAUGE STICK | | 6" VAPOR PENETRATION | |
| 8" SIGHT GLASS | | 19" CLEANOUT HATCH | |
| INSPECTION PORT | | 6" VAPOR HEADER | |
| 8" VAPOR VENT STACK | | 6" VAPOR PIPELINE | |
| EMERGENCY ENGINE SHUTDOWN | | ABOVE DECK PIPING | |
| HERMETIC GAUGE | | | |

TRINITY MARINE PRODUCTS



VAPOR PIPING FLOW DIAGRAM

REV.	0	SCALE:	NONE
REV.	0	PAGE:	2 OF 3
REV.		DATE	
REV.		BY	
REV.		CHK/APP	
REV.		WK	AB
REV.		APPROVED	
REV.		REVISION	
REV.		DESCRIPTION	



- NO. DESCRIPTION**
- 185 TYP. STRIPPING PENETRATION
 - 27S SUMP SUCTION
 - 32S PUMP WELL PRIMER VALVE
 - ABOVE DECK PIPING
 - - - BELOW DECK PIPING

NOTE 1: CONTAINMENT PORT & STARBOARD

TRINITY MARINE PRODUCTS

		KIRBY INLAND MARINE		STRIPPING PIPING FLOW DIAGRAM		SCALE: NONE	REV. 1
						PAGE: 3 OF 3	1
REV.	DATE	BY	CHK	APP	REVISION DESCRIPTION		
1	06/14/12	DCB	DDA		REMOVED STRIPPING		
0	06/01/09	RB	WK	AB	APPROVED		