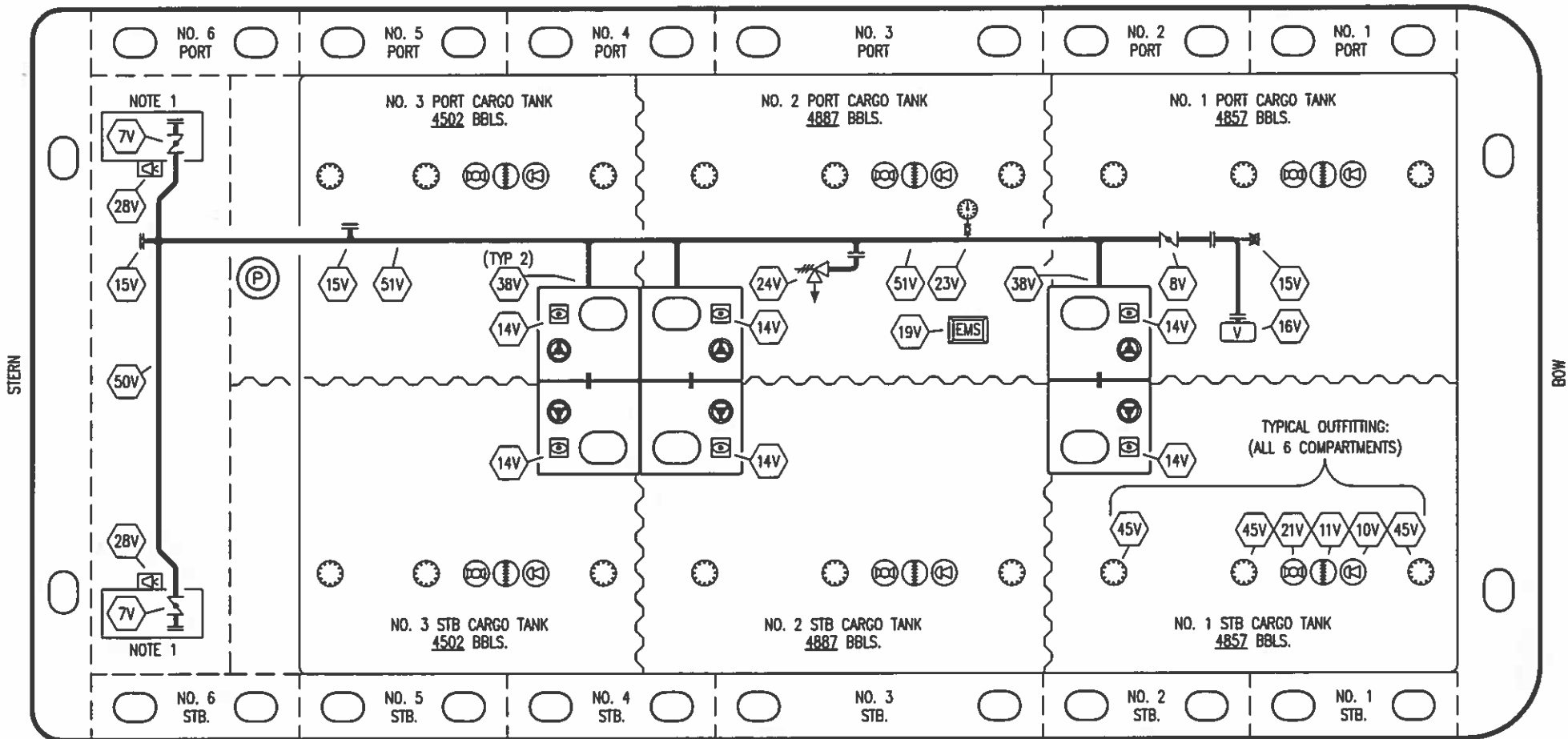


NO	DESCRIPTION	NO	DESCRIPTION
1C	CARGO TANK VALVE	12C	BURP VALVE RETURN TO CARGO TANK
2C	LOAD VALVE	13C	CARGO PIPING BLOCK VALVE
3C	MASTER SUCTION VALVE	19C	CARGO HEADER
4C	DISCHARGE VALVE	24C	FLOW INDICATOR
5C	HEADER VALVE	30C	CARGO PIPELINE
6C	SALVAGE VALVE	36C	PRESSURE GAUGE
8C	RELIEF VALVE	37C	CARGO DROP
9C	CHECK VALVE	—	— ABOVE DECK PIPING
10C	BURP VALVE	- - -	- - - BELOW DECK PIPING
11C	BLEED OFF VALVE		

NOTE 1: CONTAINMENT P/S

TRINITY MARINE PRODUCTS

					KIRBY INLAND MARINE	
					CARGO	
					PIPING FLOW DIAGRAM	
1	07/10/17	WFB	DDA		REVISED PER CLIENT COMMENTS	
0	06/01/09	RB	WK	AB	APPROVED	
REV.	DATE	BY	CHK	APP	REVISION DESCRIPTION	
					SCALE: NONE	KIRBY 28110
					PAGE: 1 OF 3	
						REV. 1



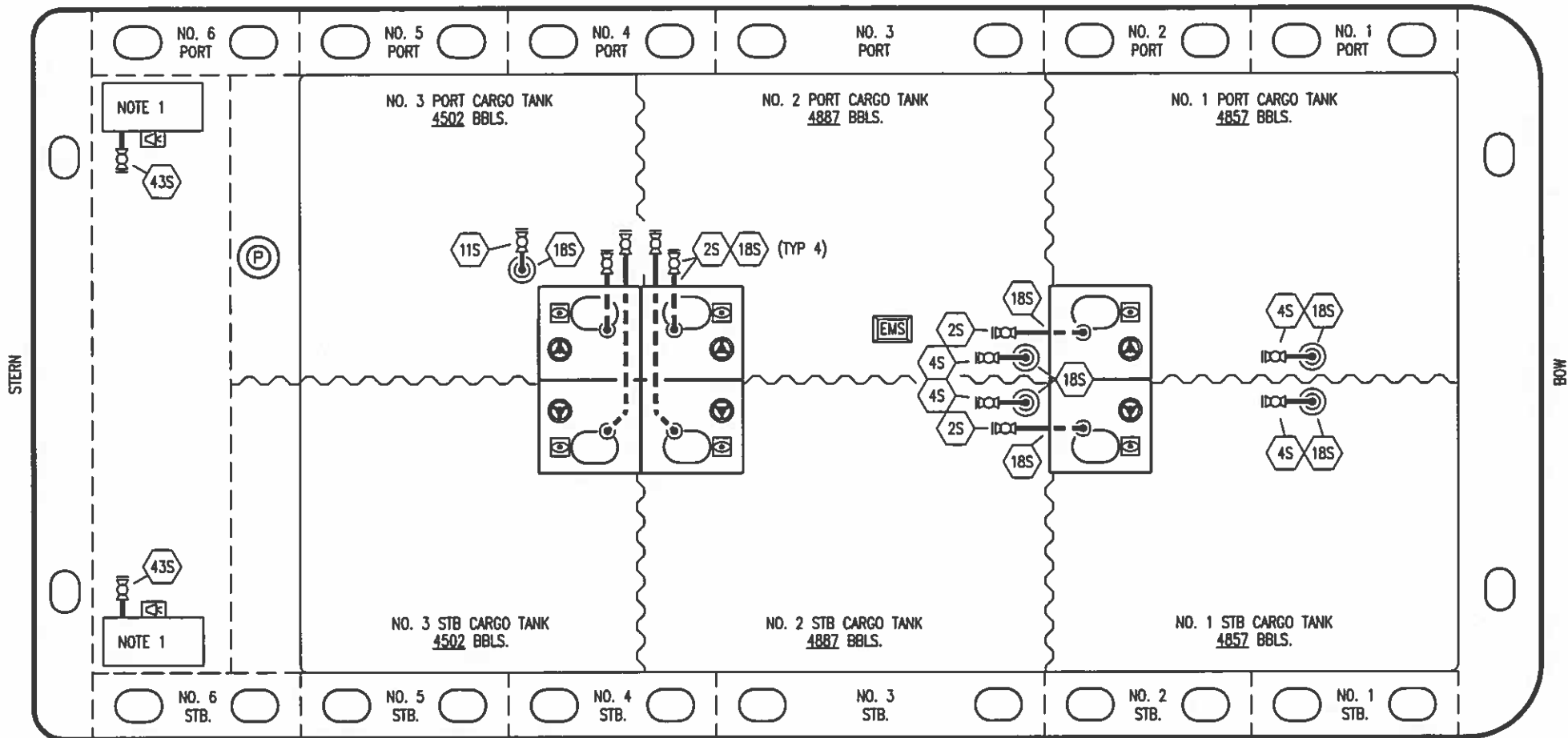
- | | |
|-----------|---------------------------|
| NO | DESCRIPTION |
| 7V | 8" HEADER VALVE |
| 8V | 8" VENT STACK VALVE |
| 10V | HIGH LEVEL/OVERFILL ALARM |
| 11V | 1 METER GAUGE STICK |
| 14V | 8" SIGHT GLASS |
| 15V | INSPECTION PORT |
| 16V | 8" VAPOR VENT STACK |
| 19V | EMERGENCY ENGINE SHUTDOWN |
| 21V | HERMETIC GAUGE |

- | | |
|-----------|---|
| NO | DESCRIPTION |
| 23V | PRES/VAC GAUGE |
| 24V | 6" PRESSURE RELIEF VALVE, HIGH VELOCITY |
| 28V | DOCK CONNECTION ALARM |
| 38V | 8" VAPOR PENETRATION (P) |
| 45V | 19" CLEANOUT HATCH |
| 50V | 8" VAPOR HEADER |
| 51V | 8" VAPOR PIPELINE |
| — | ABOVE DECK PIPING |

NOTE 1: CONTAINMENT P/S

TRINITY MARINE PRODUCTS

						KIRBY INLAND MARINE	
						VAPOR	
						PIPING FLOW DIAGRAM	
1	07/10/17	WFB	DDA		REVISED PER CLIENT COMMENTS	SCALE: NONE	KIRBY 28110
0	06/01/09	RB	WK	AB	APPROVED	PAGE: 2 OF 3	
REV.	DATE	BY	CHK	APP	REVISION DESCRIPTION		REV. 1



- | NO | DESCRIPTION |
|-----|-----------------------------------|
| 2S | CARGO TANK SUMP SUCTION VALVE |
| 4S | CARGO TANK SUCTION VALVE |
| 11S | CARGO PIPELINE SUCTION VALVE |
| 18S | STRIPPING PENETRATION OR DROP (P) |
| 43S | DRIP TANK SUCTION VALVE |

- ABOVE DECK PIPING
- - - BELOW DECK PIPING

NOTE 1: CONTAINMENT TANK PORT & STARBOARD

TRINITY MARINE PRODUCTS

KIRBY INLAND MARINE					
STRIPPING PIPING FLOW DIAGRAM					
1	07/10/17	WFB	DDA	REVISED PER CLIENT COMMENTS	
0	06/01/09	RB	WK AB	APPROVED	SCALE: NONE
REV.	DATE	BY	CHK	APP	REVISION DESCRIPTION
					PAGE: 3 OF 3
KIRBY 28110					REV. 1