


NO	DESCRIPTION	NO	DESCRIPTION
1C	CARGO TANK VALVE	12C	BURP VALVE RETURN TO CARGO TANK
2C	LOAD VALVE	13C	CARGO PIPING BLOCK VALVE
3C	MASTER SUCTION VALVE	19C	CARGO HEADER
4C	DISCHARGE VALVE	24C	FLOW INDICATOR
5C	HEADER VALVE	30C	CARGO PIPELINE
6C	SALVAGE VALVE	36C	PRESSURE GAUGE
8C	RELIEF VALVE	37C	CARGO DROP
9C	CHECK VALVE	—	— ABOVE DECK PIPING
10C	BURP VALVE	---	--- BELOW DECK PIPING
11C	BLEED OFF VALVE		

NOTE 1: CONTAINMENT P/S

TRINITY MARINE PRODUCTS

2	09/17/19	NRB	DDA			REVISED PER CLIENT COMMENTS
1	07/24/19	NRB	DDA			REVISED PER CLIENT COMMENTS
0	05/05/09	RB	WK	AB		APPROVED
REV.	DATE	BY	CHK	APP		REVISION DESCRIPTION



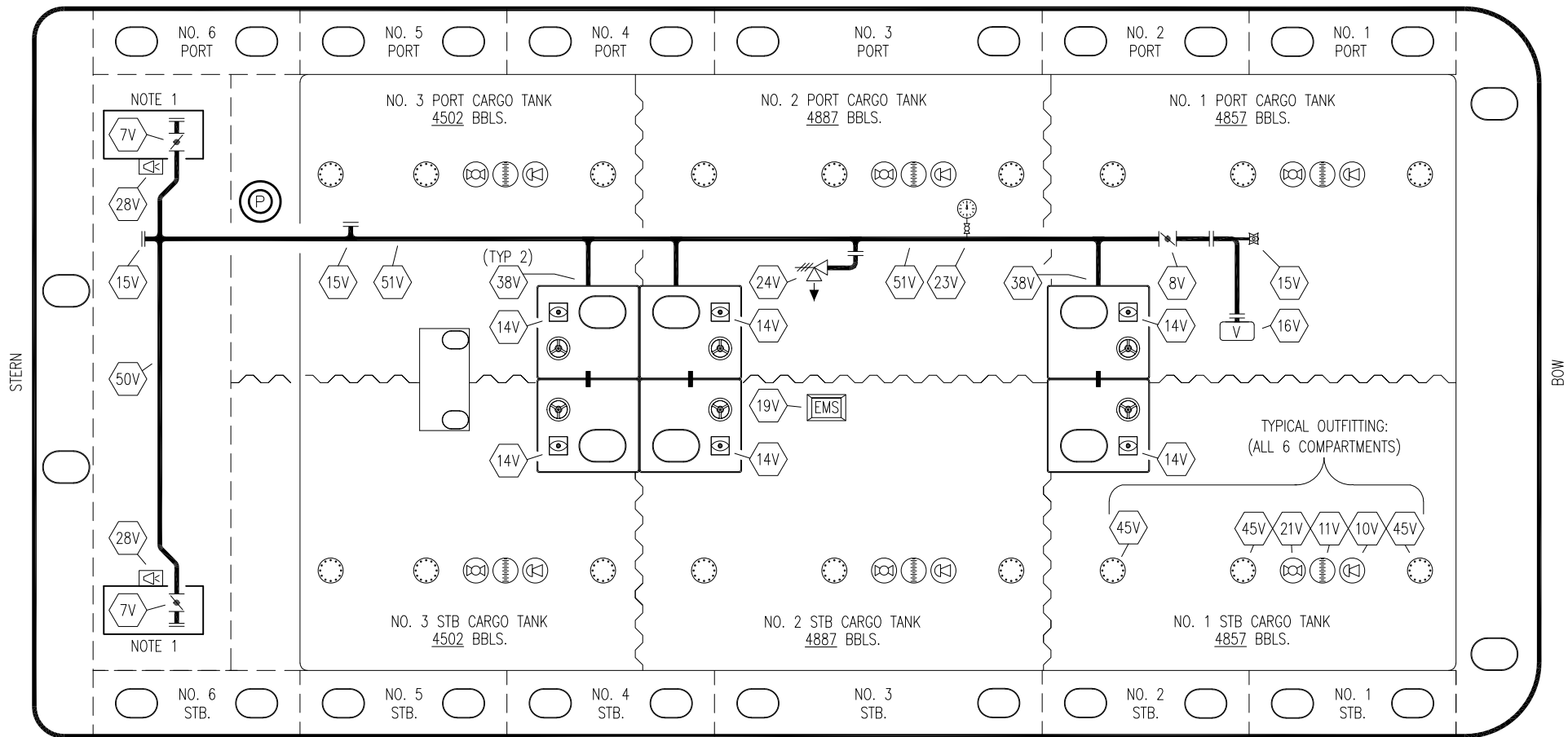
**KIRBY INLAND MARINE**

**CARGO**

**PIPING FLOW DIAGRAM**

**KIRBY 28106**

SCALE: NONE	REV. 2
PAGE: 1 OF 3	

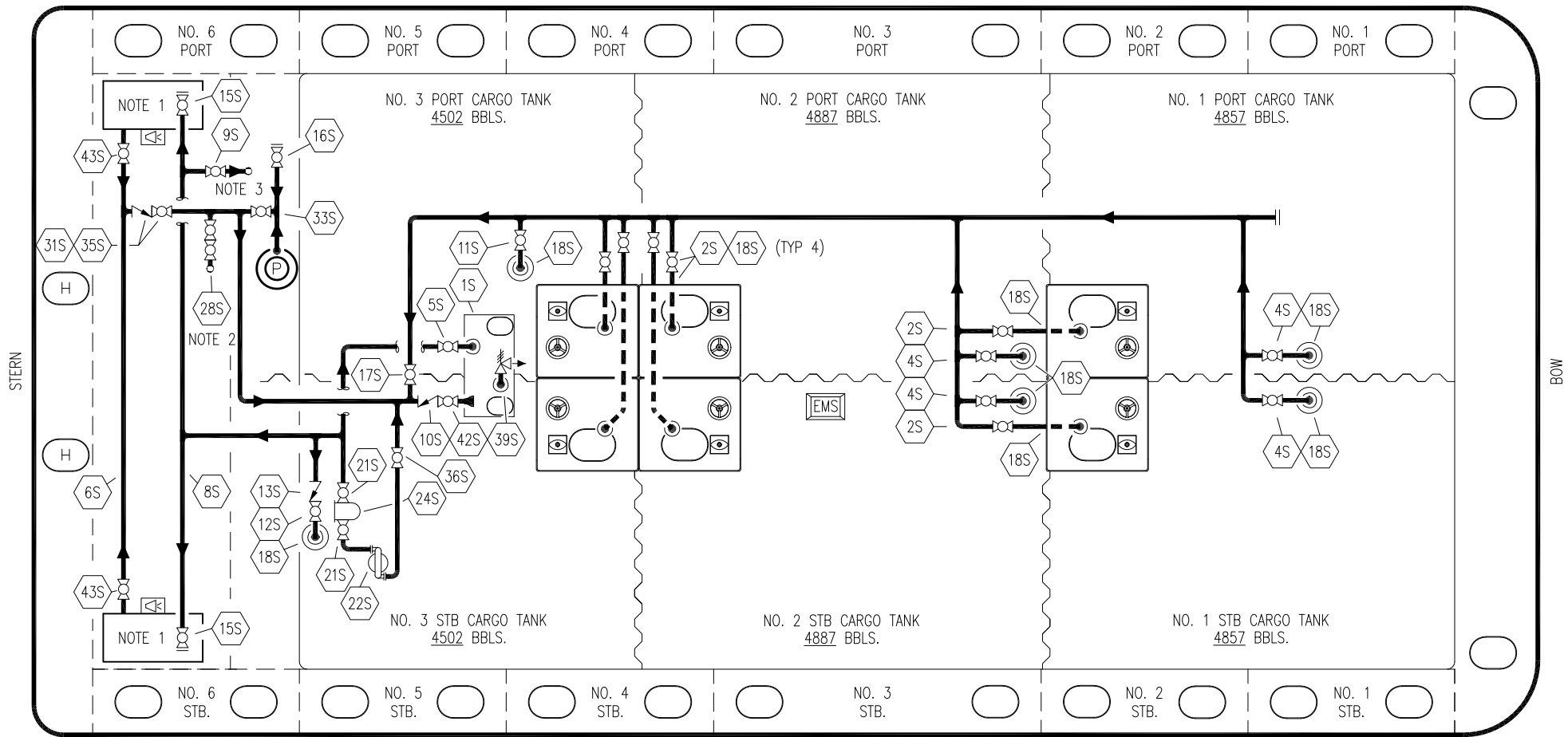


- |     |                           |     |   |
|-----|---------------------------|-----|---|
| NO  | DESCRIPTION               | NO  | DESCRIPTION                             |
| 7V  | 8" HEADER VALVE           | 23V | PRES/VAC GAUGE                          |
| 8V  | 8" VENT STACK VALVE       | 24V | 6" PRESSURE RELIEF VALVE, HIGH VELOCITY |
| 10V | HIGH LEVEL/OVERFILL ALARM | 28V | DOCK CONNECTION ALARM                   |
| 11V | 1 METER GAUGE STICK       | 38V | 8" VAPOR PENETRATION (P)                |
| 14V | 8" SIGHT GLASS            | 45V | 19" CLEANOUT HATCH                      |
| 15V | INSPECTION PORT           | 50V | 8" VAPOR HEADER                         |
| 16V | 8" VAPOR VENT STACK       | 51V | 8" VAPOR PIPELINE                       |
| 19V | EMERGENCY ENGINE SHUTDOWN | —   | — ABOVE DECK PIPING                     |
| 21V | HERMETIC GAUGE            |     |   |

NOTE 1: CONTAINMENT P/S

TRINITY MARINE PRODUCTS

					<b>KIRBY INLAND MARINE</b>	
					<b>VAPOR</b>	
					<b>PIPING FLOW DIAGRAM</b>	
1	07/24/19	NRB	DDA		REVISED PER CLIENT COMMENTS	
0	05/20/09	RB	WK	AB	APPROVED	
REV.	DATE	BY	CHK	APP	REVISION DESCRIPTION	
					SCALE: NONE	<b>KIRBY 28106</b>
					PAGE: 2 OF 3	



NO	DESCRIPTION	NO	DESCRIPTION	NO	DESCRIPTION
1S	3000 GAL SLOP TANK	16S	REMOTE SUCTION CONNECTION	42S	SLOP TANK DISCHARGE VALVE
2S	CARGO TANK SUMP SUCTION VALVE	17S	FORWARD CARGO TANK ISOLATION	43S	DRIP TANK SUCTION VALVE
4S	CARGO TANK SUCTION VALVE	18S	STRIPPING PENETRATION OR DROP	—	—
5S	SLOP TANK SUCTION VALVE	21S	BLOCK VALVE	—	—
6S	SUCTION HEADER	22S	PNEUMATIC PUMP	—	—
8S	DISCHARGE HEADER	24S	BASKET STRAINER	—	—
9S	DEEP WELL FILL VALVE	28S	CARGO PIPING SUCTION	—	—
10S	SLOP TANK CHECK VALVE	31S	CHECK VALVE	—	—
11S	CARGO PIPELINE SUCTION VALVE	33S	PUMP WELL SUCTION	—	—
12S	RETURN TO CARGO TANK VALVE	35S	STRIPPING VALVE	—	—
13S	RETURN TO CARGO CHECK VALVE	39S	PRES/VAC VALVE	—	—
15S	HEADER DISCHARGE VALVE				

NOTE 1: CONTAINMENT TANK PORT & STARBOARD  
 NOTE 2: CONNECTS TO CARGO PUMP DISCHARGE PIPING  
 NOTE 3: CONNECTS TO CARGO RELIEF VALVE DISCHARGE PIPING

TRINITY MARINE PRODUCTS

REV.	DATE	BY	CHK	APP	REVISION DESCRIPTION
1	07/24/19	NRB	DDA		REVISED PER CLIENT COMMENTS
0	05/20/09	RB	WK	AB	APPROVED

KIRBY INLAND MARINE

**STRIPPING  
PIPING FLOW DIAGRAM**

SCALE: NONE	<b>KIRBY 28106</b>	REV. 1
PAGE: 3 OF 3		