

NOTE 1: CONTAINMENT P/S

<b>NO</b>	<b>DESCRIPTION</b>	<b>NO</b>	<b>DESCRIPTION</b>
1C	CARGO TANK VALVE	12C	BURP VALVE RETURN TO CARGO TANK
2C	LOAD VALVE	13C	CARGO PIPING BLOCK VALVE
3C	MASTER SUCTION VALVE	19C	CARGO HEADER
4C	DISCHARGE VALVE	24C	FLOW INDICATOR
5C	HEADER VALVE	30C	CARGO PIPELINE
6C	SALVAGE VALVE	36C	PRESSURE GAUGE
8C	RELIEF VALVE	37C	CARGO DROP
9C	CHECK VALVE	38C	DEEP WELL DRAIN VALVE
10C	BURP VALVE	—	— ABOVE DECK PIPING
11C	BLEED OFF VALVE	- - -	- - - BELOW DECK PIPING

TRINITY MARINE PRODUCTS

KIRBY INLAND MARINE



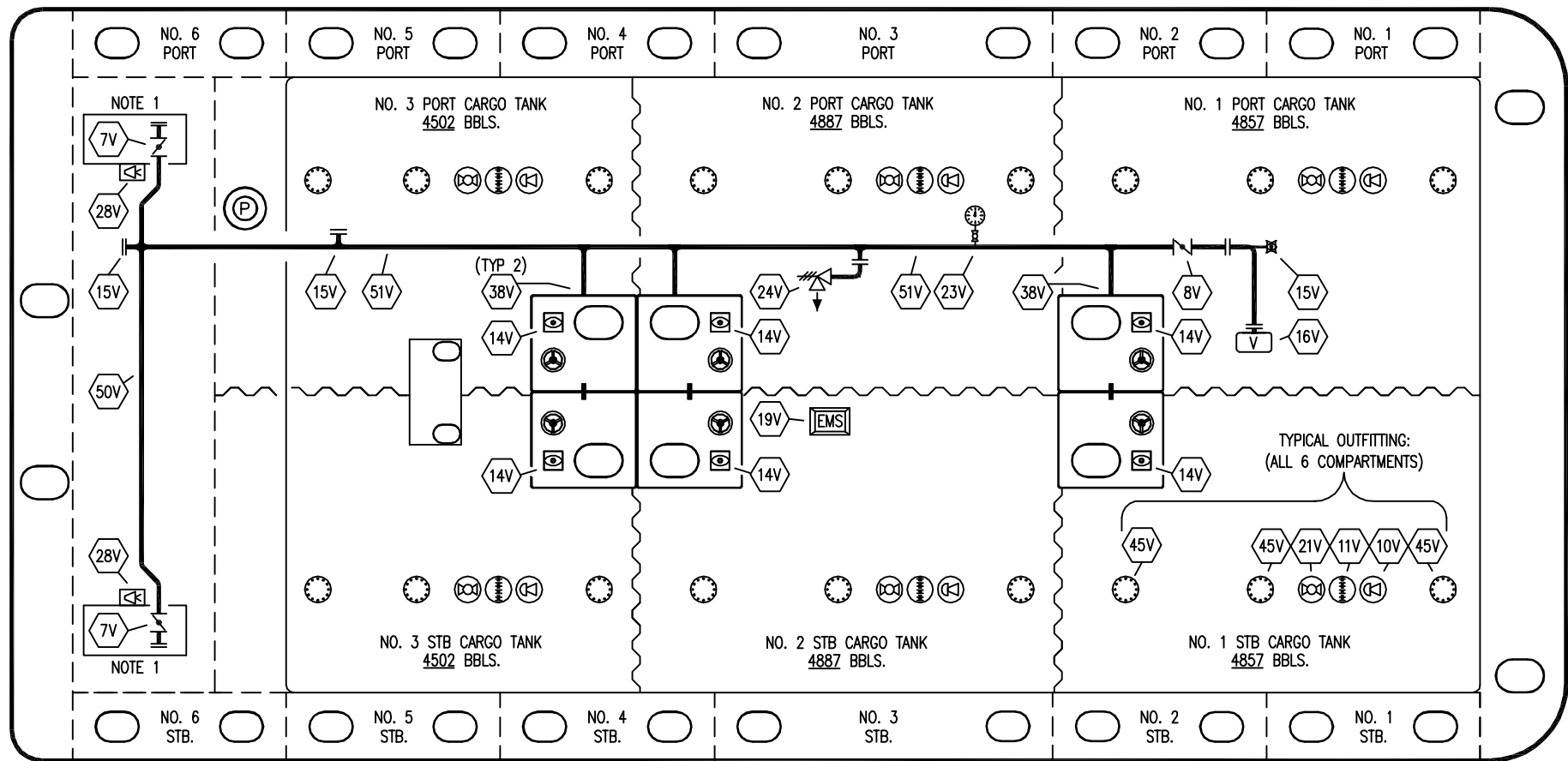
**CARGO  
PIPING FLOW DIAGRAM**

0	05/05/09	RB	WK	AB	APPROVED
REV.	DATE	BY	CHK	APP	REVISION DESCRIPTION

SCALE: NONE  
PAGE: 1 OF 3

**KIRBY 28104**

REV. 0



NO	DESCRIPTION
7V	8" HEADER VALVE
8V	8" VENT STACK VALVE
10V	HIGH LEVEL/OVERFILL ALARM
11V	1 METER GAUGE STICK
14V	8" SIGHT GLASS
15V	INSPECTION PORT
16V	8" VAPOR VENT STACK
19V	EMERGENCY ENGINE SHUTDOWN
21V	HERMETIC GAUGE

NO	DESCRIPTION
23V	PRES/VAC GAUGE
24V	6" PRESSURE RELIEF VALVE, HIGH VELOCITY
28V	DOCK CONNECTION ALARM
38V	8" VAPOR PENETRATION (P)
45V	19" CLEANOUT HATCH
50V	8" VAPOR HEADER
51V	8" VAPOR PIPELINE
—	ABOVE DECK PIPING

NOTE 1: CONTAINMENT P/S

TRINITY MARINE PRODUCTS

KIRBY INLAND MARINE



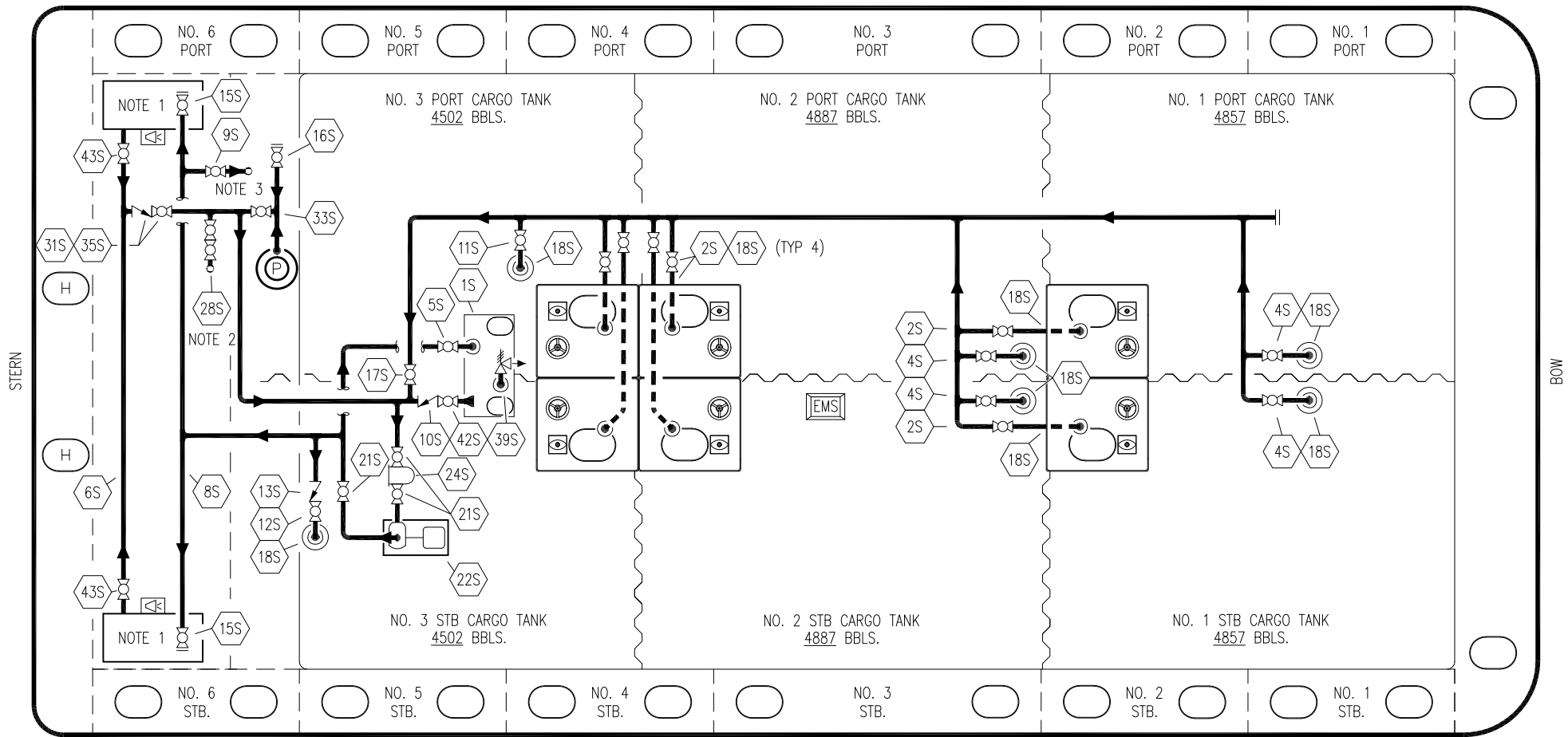
VAPOR  
PIPING FLOW DIAGRAM

REV.	DATE	BY	CHK	APP	REVISION DESCRIPTION
0	05/15/09	RB	WK	AB	APPROVED

SCALE: NONE  
PAGE: 2 OF 3

KIRBY 28104

REV. 0




NO	DESCRIPTION	NO	DESCRIPTION	NO	DESCRIPTION
1S	3000 GAL SLOP TANK	16S	REMOTE SUCTION CONNECTION	42S	SLOP TANK DISCHARGE VALVE
2S	CARGO TANK SUMP SUCTION VALVE	17S	FORWARD CARGO TANK ISOLATION	43S	DRIP TANK SUCTION VALVE
4S	CARGO TANK SUCTION VALVE	18S	STRIPPING PENETRATION OR DROP	—	—
5S	SLOP TANK SUCTION VALVE	21S	BLOCK VALVE	—	—
6S	SUCTION HEADER	22S	STRIPPING PUMP	—	—
8S	DISCHARGE HEADER	24S	BASKET STRAINER	—	—
9S	DEEP WELL FILL VALVE	28S	CARGO PIPING SUCTION	—	—
10S	SLOP TANK CHECK VALVE	31S	CHECK VALVE	—	—
11S	CARGO PIPELINE SUCTION VALVE	33S	PUMP WELL SUCTION	—	—
12S	RETURN TO CARGO TANK VALVE	35S	STRIPPING VALVE	—	—
13S	RETURN TO CARGO CHECK VALVE	39S	PRES/VAC VALVE	—	—
15S	HEADER DISCHARGE VALVE				

NOTE 1: CONTAINMENT TANK PORT & STARBOARD  
 NOTE 2: CONNECTS TO CARGO PUMP DISCHARGE PIPING  
 NOTE 3: CONNECTS TO CARGO RELIEF VALVE DISCHARGE PIPING

TRINITY MARINE PRODUCTS

REV.	DATE	BY	CHK	APP	REVISION DESCRIPTION
1	09/03/19	NRB	DDA		REVISED PER CLIENT COMMENTS
0	05/15/09	RB	WK	AB	APPROVED



**KIRBY INLAND MARINE**

**STRIPPING  
PIPING FLOW DIAGRAM**

**KIRBY 28104**

SCALE: NONE	REV. 1
PAGE: 3 OF 3	