

NO	DESCRIPTION	NO	DESCRIPTION
1C	CARGO TANK VALVE	12C	BURP VALVE RETURN TO CARGO TANK
2C	LOAD VALVE	13C	CARGO PIPING BLOCK VALVE
3C	MASTER SUCTION VALVE	19C	CARGO HEADER
4C	DISCHARGE VALVE	24C	FLOW INDICATOR
5C	HEADER VALVE	30C	CARGO PIPELINE
6C	SALVAGE VALVE	36C	PRESSURE GAUGE
8C	RELIEF VALVE	37C	CARGO DROP
9C	CHECK VALVE	38C	DEEP WELL DRAIN VALVE
10C	BURP VALVE	—	— ABOVE DECK PIPING
11C	BLEED OFF VALVE	- - -	- - - BELOW DECK PIPING

NOTE 1: CONTAINMENT P/S

TRINITY MARINE PRODUCTS

KIRBY INLAND MARINE 

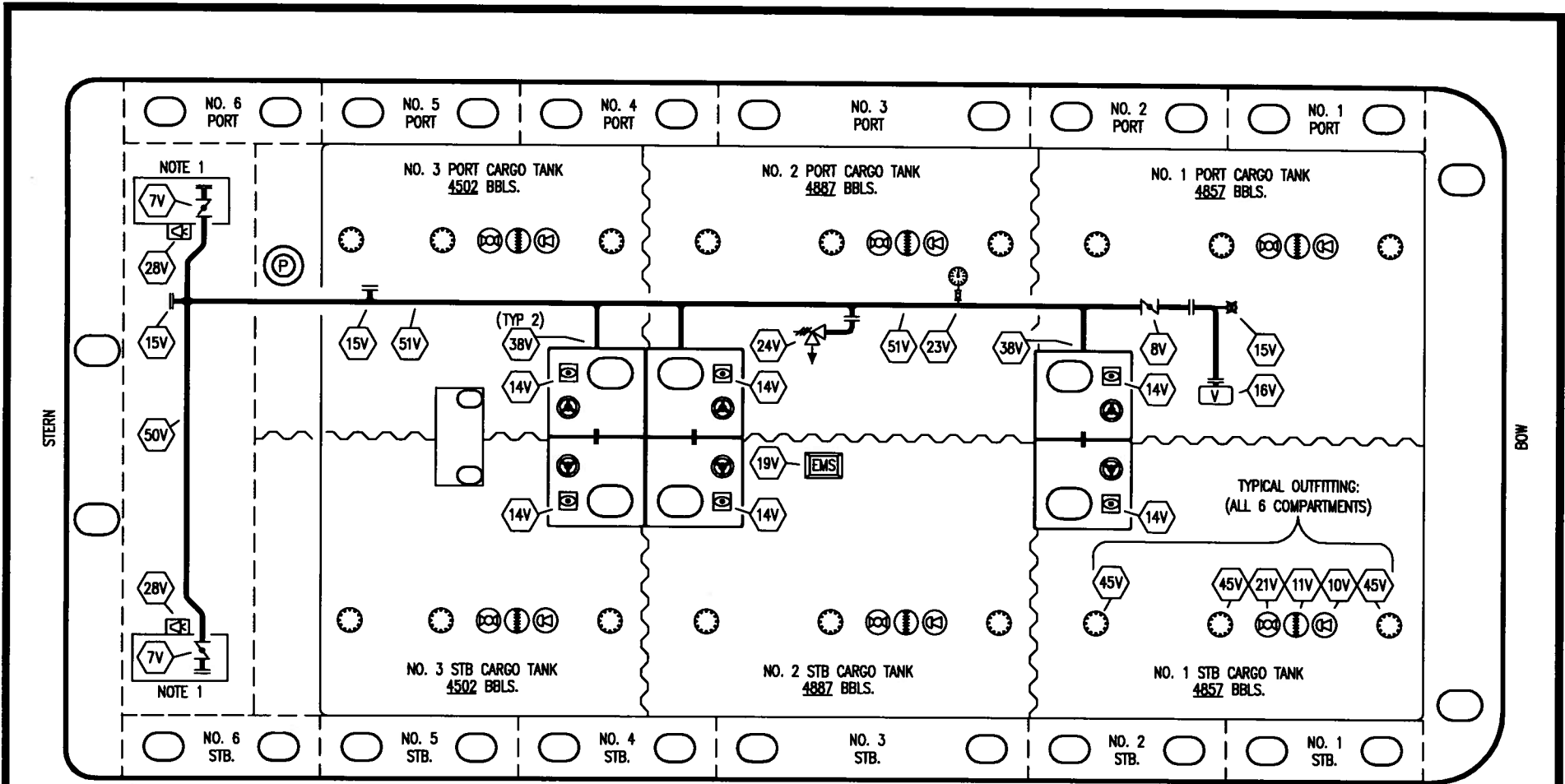
**CARGO
PIPING FLOW DIAGRAM**

REV.	DATE	BY	CHK	APP	REVISION DESCRIPTION
0	05/05/09	RB	WK	AB	APPROVED

SCALE: NONE
PAGE: 1 OF 3

KIRBY 28103

REV. **0**



- | | | | |
|-----------|---------------------------|-----------|---|
| NO | DESCRIPTION | NO | DESCRIPTION |
| 7V | 8" HEADER VALVE | 23V | PRES/VAC GAUGE |
| 8V | 8" VENT STACK VALVE | 24V | 6" PRESSURE RELIEF VALVE, HIGH VELOCITY |
| 10V | HIGH LEVEL/OVERFILL ALARM | 28V | DOCK CONNECTION ALARM |
| 11V | 1 METER GAUGE STICK | 38V | 8" VAPOR PENETRATION (P) |
| 14V | 8" SIGHT GLASS | 45V | 19" CLEANOUT HATCH |
| 15V | INSPECTION PORT | 50V | 8" VAPOR HEADER |
| 16V | 8" VAPOR VENT STACK | 51V | 8" VAPOR PIPELINE |
| 19V | EMERGENCY ENGINE SHUTDOWN | | — ABOVE DECK PIPING |
| 21V | HERMETIC GAUGE | | |

NOTE 1: CONTAINMENT P/S

TRINITY MARINE PRODUCTS

KIRBY INLAND MARINE 

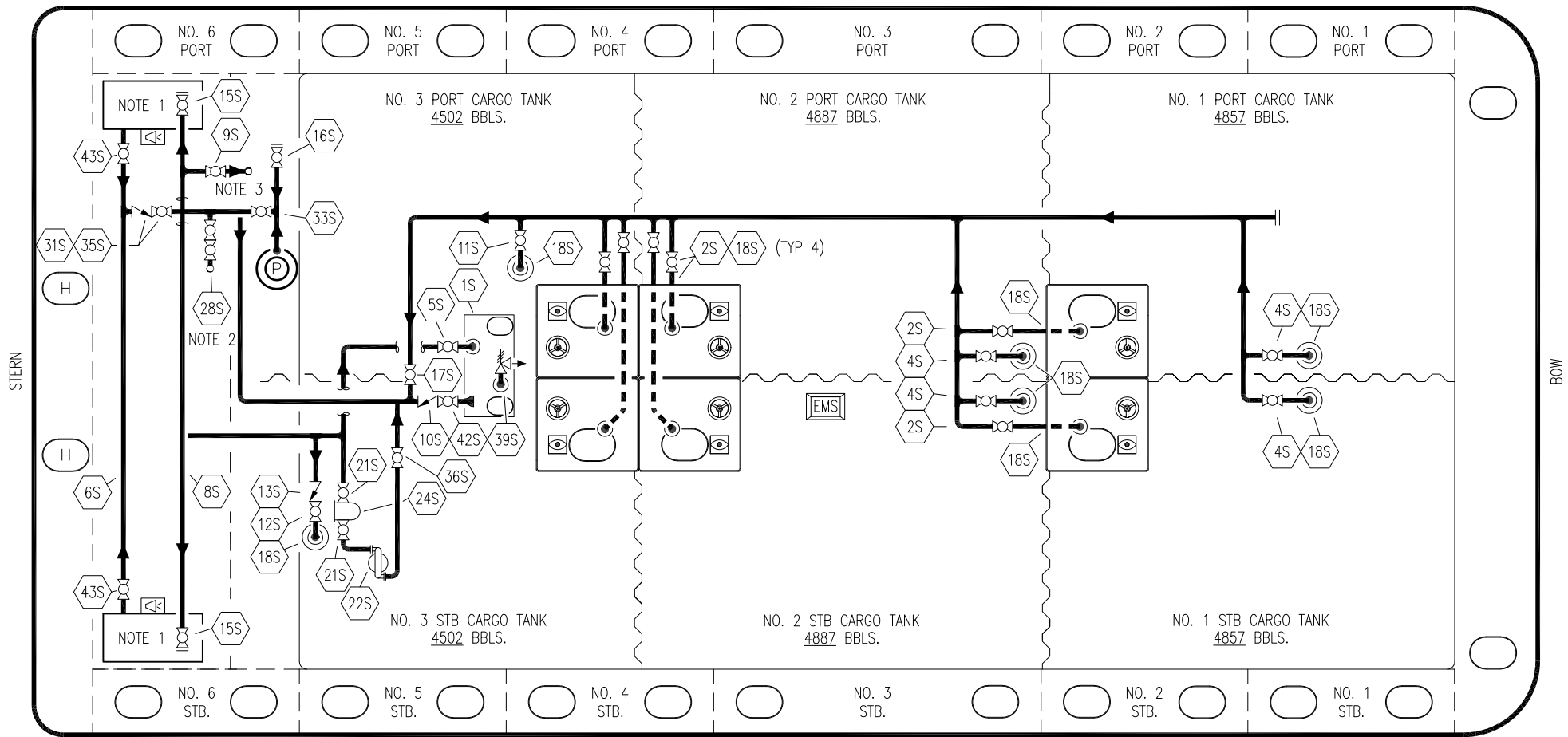
**VAPOR
PIPING FLOW DIAGRAM**

0	05/15/09	RB	WK	AB	APPROVED
REV.	DATE	BY	CHK	APP	REVISION DESCRIPTION

SCALE: NONE
PAGE: 2 OF 3

KIRBY 28103

REV. **0**



NO	DESCRIPTION	NO	DESCRIPTION	NO	DESCRIPTION
1S	3000 GAL SLOP TANK	16S	REMOTE SUCTION CONNECTION	42S	SLOP TANK DISCHARGE VALVE
2S	CARGO TANK SUMP SUCTION VALVE	17S	FORWARD CARGO TANK ISOLATION	43S	DRIP TANK SUCTION VALVE
4S	CARGO TANK SUCTION VALVE	18S	⊙ STRIPPING PENETRATION OR DROP	—	ABOVE DECK PIPING
5S	SLOP TANK SUCTION VALVE	21S	BLOCK VALVE	- - -	BELOW DECK PIPING
6S	SUCTION HEADER	22S	PNEUMATIC PUMP		
8S	DISCHARGE HEADER	24S	BASKET STRAINER		
9S	DEEP WELL FILL VALVE	28S	CARGO PIPING SUCTION		
10S	SLOP TANK CHECK VALVE	31S	CHECK VALVE		
11S	CARGO PIPELINE SUCTION VALVE	33S	PUMP WELL SUCTION		
12S	RETURN TO CARGO TANK VALVE	35S	STRIPPING VALVE		
13S	RETURN TO CARGO CHECK VALVE	36S	STRIPPING PUMP DISCHARGE		
15S	HEADER DISCHARGE VALVE				

NOTE 1: CONTAINMENT TANK PORT & STARBOARD
 NOTE 2: CONNECTS TO CARGO RELIEF VALVE DISCHARGE PIPING
 NOTE 3: CONNECTS TO CARGO RELIEF VALVE DISCHARGE PIPING

TRINITY MARINE PRODUCTS

REV.	DATE	BY	CHK	APP	REVISION DESCRIPTION
2	07/24/19	NRB	DDA		REVISED PER CLIENT COMMENTS
1	09/23/15	BB	SC		REVISED PER CLIENT COMMENTS
0	05/15/09	RB	WK	AB	APPROVED



KIRBY INLAND MARINE

STRIPPING

PIPING FLOW DIAGRAM

KIRBY 28103

SCALE: NONE	REV. 2
PAGE: 3 OF 3	