

TRINITY MARINE PRODUCTS

KIRBY INLAND MARINE

CARGO PIPING FLOW DIAGRAM

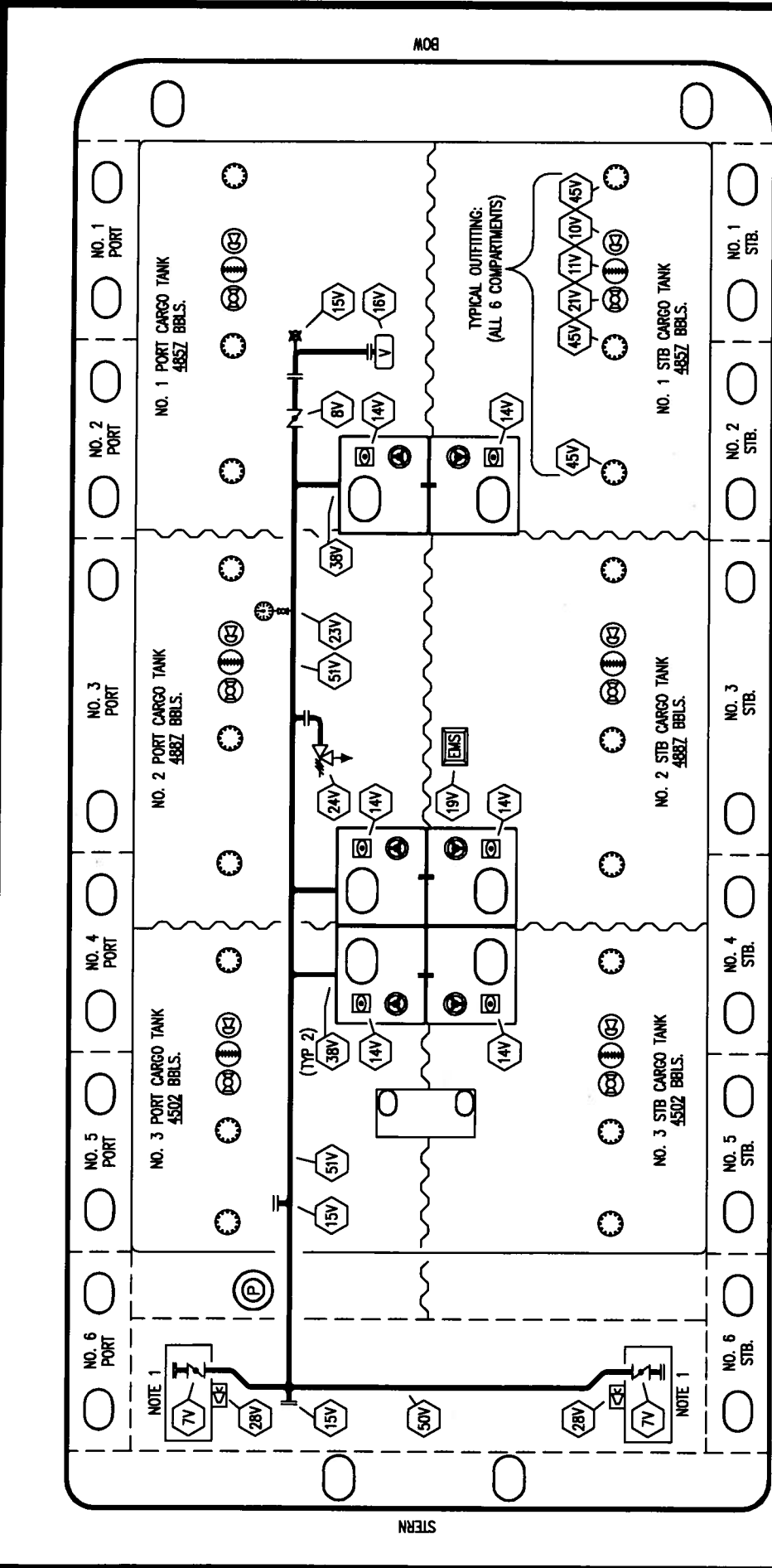
SCALE: NONE
PAGE: 1 OF 3

REV: 0

NOTE 1: CONTAINMENT P/S

NO	DESCRIPTION
1C	CARGO TANK VALVE
2C	LOAD VALVE
3C	MASTER SUCTION VALVE
4C	DISCHARGE VALVE
5C	HEADER VALVE
6C	SALVAGE VALVE
8C	RELIEF VALVE
9C	CHECK VALVE
10C	BURP VALVE
11C	BLEED OFF VALVE
12C	BURP VALVE RETURN TO CARGO TANK
13C	CARGO PIPING BLOCK VALVE
19C	CARGO HEADER
24C	FLOW INDICATOR
30C	CARGO PIPELINE
36C	PRESSURE GAUGE
37C	CARGO DROP
38C	DEEP WELL DRAIN VALVE
3C	ABOVE DECK PIPING
1C	BELOW DECK PIPING

REV	DATE	BY	CHK	APP	REVISION DESCRIPTION
0	05/05/09	RB	WK	AB	APPROVED



BOW

STERN

TRINITY MARINE PRODUCTS



KIRBY INLAND MARINE

VAPOR

PIPING FLOW DIAGRAM

REV.	DATE	BY	CHK	APP	REVISION DESCRIPTION
0	05/15/09	RB	AB	APPROVED	

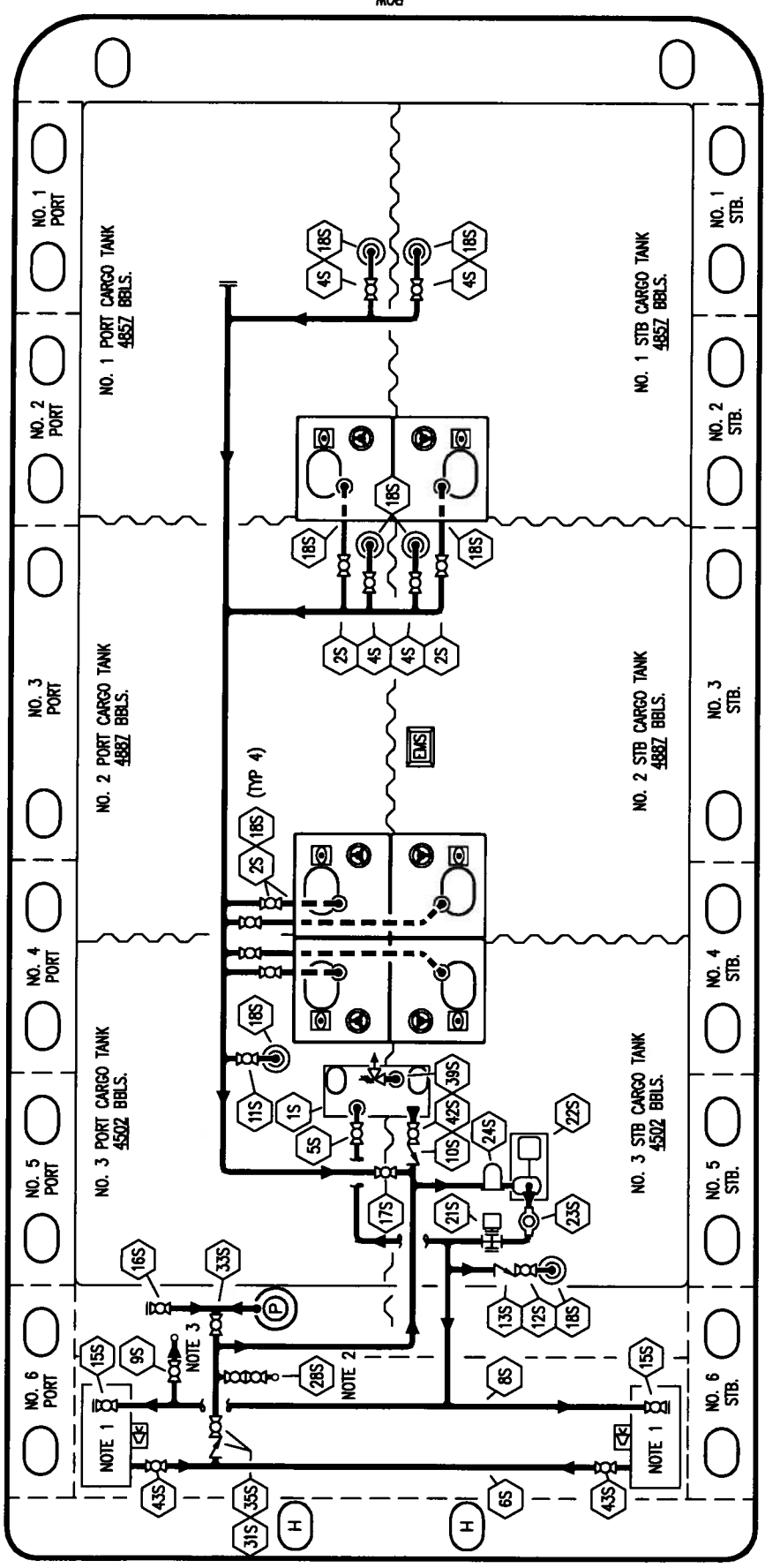
SCALE: NONE
PAGE: 2 OF 3

REV. 0

KIRBY 28102

NOTE 1: CONTAINMENT P/S

NO	DESCRIPTION
7V	8" HEADER VALVE
8V	8" VENT STACK VALVE
10V	HIGH LEVEL/OVERFILL ALARM
11V	1 METER GAUGE STICK
14V	8" SIGHT GLASS
15V	INSPECTION PORT
16V	8" VAPOR VENT STACK
19V	EMERGENCY ENGINE SHUTDOWN
21V	HERMETIC GAUGE
23V	PRES/VAC GAUGE
24V	6" PRESSURE RELIEF VALVE, HIGH VELOCITY
28V	DOCK CONNECTION ALARM
38V	8" VAPOR PENETRATION
45V	19" CLEANOUT HATCH
50V	8" VAPOR HEADER
51V	8" VAPOR PIPELINE
—	ABOVE DECK PIPING



NO	DESCRIPTION	NO	DESCRIPTION	NO	DESCRIPTION
1S	3000 GAL SLOP TANK	42S	SLOP TANK DISCHARGE VALVE	16S	REMOTE SUCTION CONNECTION
2S	CARGO TANK SUMP SUCTION VALVE	43S	DRIP TANK SUCTION VALVE	17S	FORWARD CARGO TANK ISOLATION
4S	CARGO TANK SUCTION VALVE	---	ABOVE DECK PIPING	18S	STRIPPING PENETRATION OR DROP
5S	SLOP TANK SUCTION VALVE	---	BELOW DECK PIPING	21S	PRIMING POT
6S	SUCTION HEADER			22S	STRIPPING PUMP
8S	DISCHARGE HEADER			23S	FLOW INDICATOR (SIGHT GLASS)
9S	DEEP WELL FILL VALVE			24S	BASKET STRAINER
10S	SLOP TANK CHECK VALVE			28S	CARGO PIPING SUCTION
11S	CARGO PIPELINE SUCTION VALVE			31S	CHECK VALVE
12S	RETURN TO CARGO TANK VALVE			33S	PUMP WELL SUCTION
13S	RETURN TO CARGO CHECK VALVE			35S	STRIPPING VALVE
15S	HEADER DISCHARGE VALVE			39S	PRES/VAC VALVE

NOTE 1: CONTAINMENT TANK PORT & STARBOARD
 NOTE 2: CONNECTS TO CARGO PUMP DISCHARGE PIPING
 NOTE 3: CONNECTS TO CARGO RELIEF VALVE DISCHARGE PIPING

TRINITY MARINE PRODUCTS

KIRBY INLAND MARINE

STRIPPING PIPING FLOW DIAGRAM

SCALE: NONE
 PAGE: 3 OF 3