

STERN

BOW

NOTE 1

NOTE 1

NOTE 1: CONTAINMENT P/S

NO	DESCRIPTION	NO	DESCRIPTION
1C	CARGO TANK VALVE	12C	BURP VALVE RETURN TO CARGO TANK
2C	LOAD VALVE	13C	CARGO PIPING BLOCK VALVE
3C	MASTER SUCTION VALVE	19C	CARGO HEADER
4C	DISCHARGE VALVE	24C	FLOW INDICATOR
5C	HEADER VALVE	30C	CARGO PIPELINE
6C	SALVAGE VALVE	36C	PRESSURE GAUGE
8C	RELIEF VALVE	37C	CARGO DROP
9C	CHECK VALVE	38C	DEEP WELL DRAIN VALVE
10C	BURP VALVE	—	— ABOVE DECK PIPING
11C	BLEED OFF VALVE	---	--- BELOW DECK PIPING

TRINITY MARINE PRODUCTS

KIRBY INLAND MARINE 

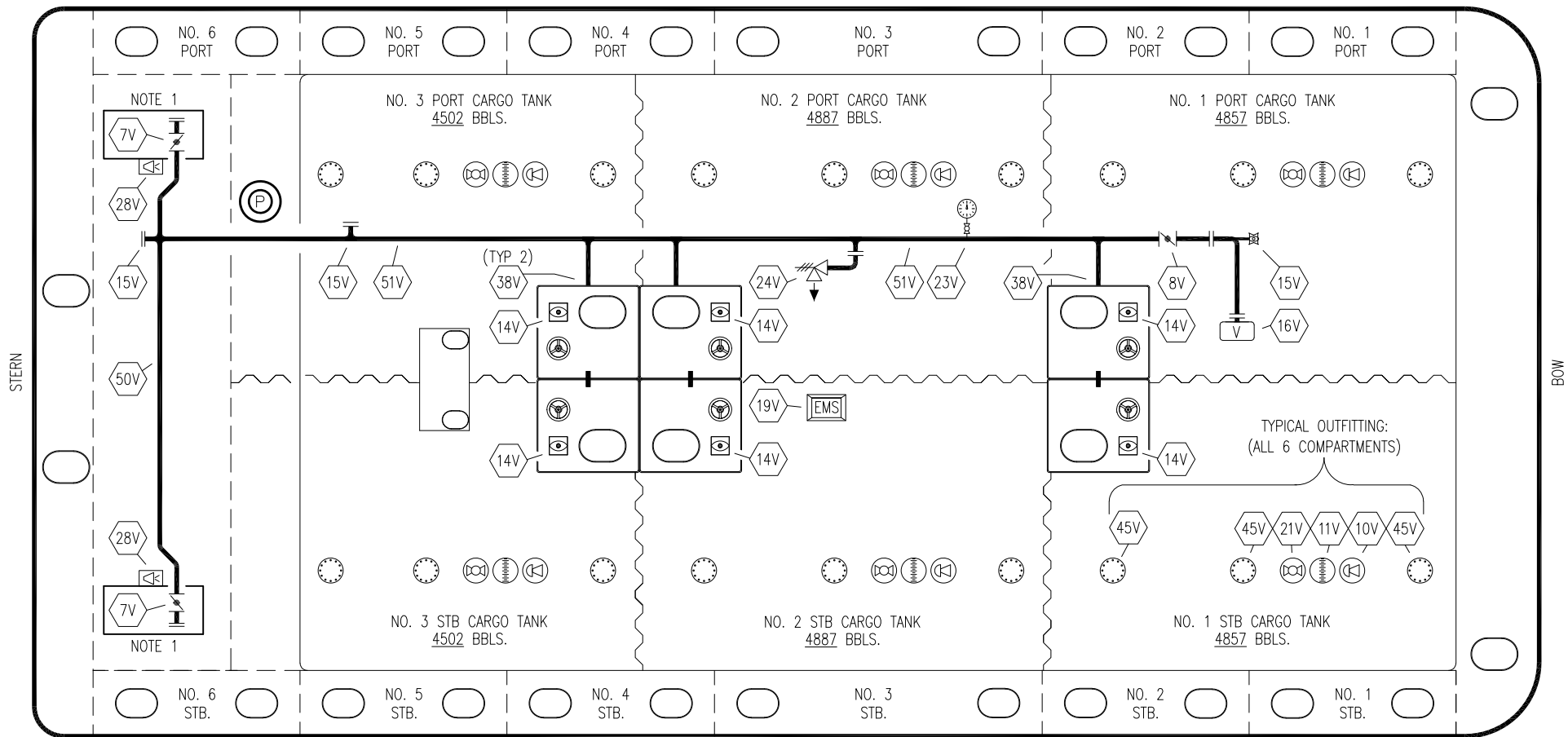
**CARGO  
PIPING FLOW DIAGRAM**

REV.	DATE	BY	CHK	APP	REVISION DESCRIPTION
1	07/03/19	NRB	DDA		REVISED PER CLIENT COMMENTS
0	05/05/09	RB	WK	AB	APPROVED

SCALE: NONE  
PAGE: 1 OF 3

**KIRBY 28101**

REV. **1**

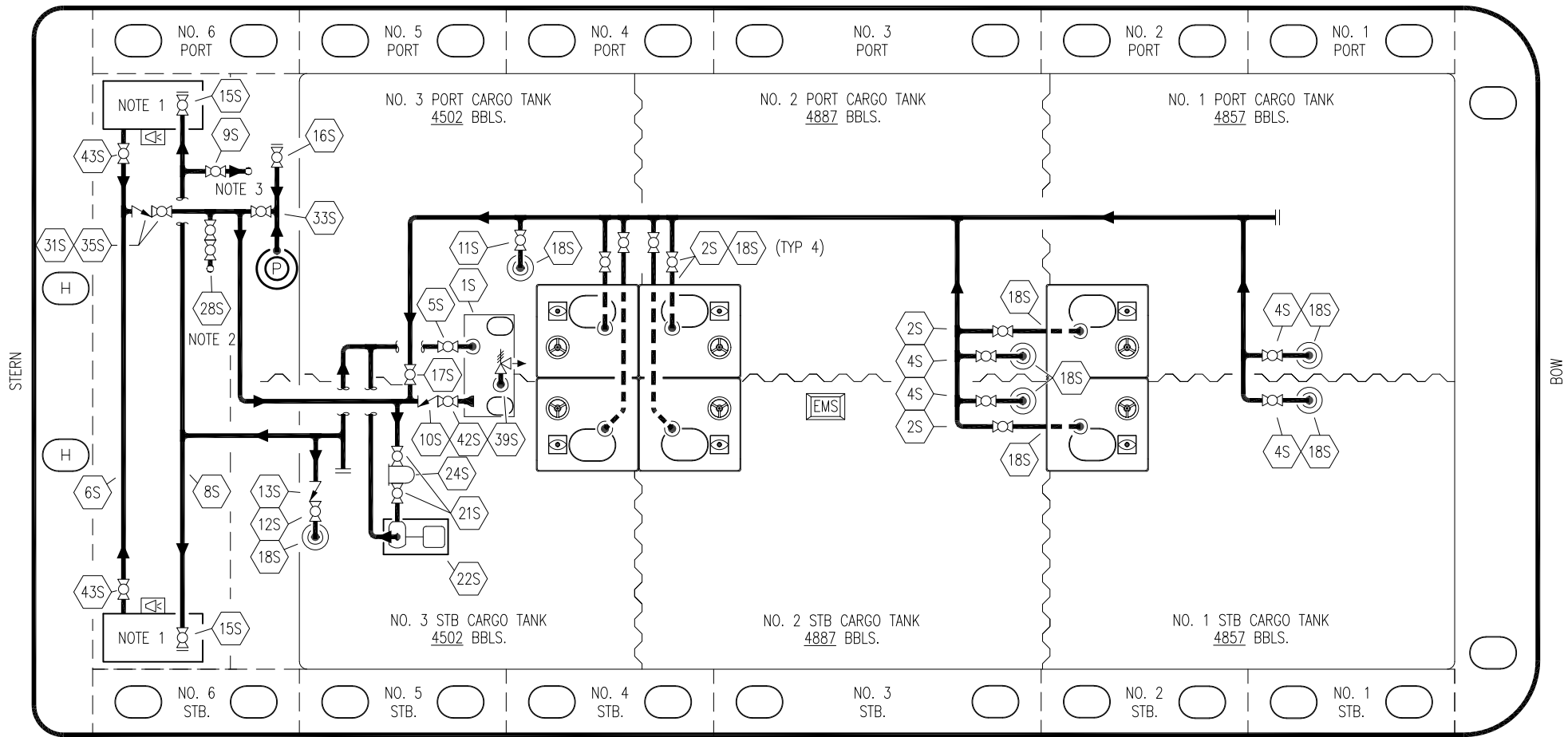


NO	DESCRIPTION	NO	DESCRIPTION
7V	8" HEADER VALVE	23V	PRES/VAC GAUGE
8V	8" VENT STACK VALVE	24V	6" PRESSURE RELIEF VALVE, HIGH VELOCITY
10V	HIGH LEVEL/OVERFILL ALARM	28V	DOCK CONNECTION ALARM
11V	1 METER GAUGE STICK	38V	8" VAPOR PENETRATION (P)
14V	8" SIGHT GLASS	45V	19" CLEANOUT HATCH
15V	INSPECTION PORT	50V	8" VAPOR HEADER
16V	8" VAPOR VENT STACK	51V	8" VAPOR PIPELINE
19V	EMERGENCY ENGINE SHUTDOWN	—	— ABOVE DECK PIPING
21V	HERMETIC GAUGE		

NOTE 1: CONTAINMENT P/S

TRINITY MARINE PRODUCTS

					<b>KIRBY INLAND MARINE</b>	
					<b>VAPOR</b>	
					<b>PIPING FLOW DIAGRAM</b>	
1	07/03/19	NRB	DDA		REVISED CLIENT COMMENTS	
0	05/15/09	RB	WK	AB	APPROVED	
SCALE:	NONE				<b>KIRBY 28101</b>	REV. <b>1</b>
PAGE:	2 OF 3					



NO	DESCRIPTION	NO	DESCRIPTION	NO	DESCRIPTION
1S	3000 GAL SLOP TANK	16S	REMOTE SUCTION CONNECTION	42S	SLOP TANK DISCHARGE VALVE
2S	CARGO TANK SUMP SUCTION VALVE	17S	FORWARD CARGO TANK ISOLATION	43S	DRIP TANK SUCTION VALVE
4S	CARGO TANK SUCTION VALVE	18S	⊙ STRIPPING PENETRATION OR DROP	—	ABOVE DECK PIPING
5S	SLOP TANK SUCTION VALVE	21S	BLOCK VALVE	- - -	BELOW DECK PIPING
6S	SUCTION HEADER	22S	STRIPPING PUMP		
8S	DISCHARGE HEADER	23S	FLOW INDICATOR (SIGHT GLASS)		
9S	DEEP WELL FILL VALVE	24S	BASKET STRAINER		
10S	SLOP TANK CHECK VALVE	28S	CARGO PIPING SUCTION		
11S	CARGO PIPELINE SUCTION VALVE	31S	CHECK VALVE		
12S	RETURN TO CARGO TANK VALVE	33S	PUMP WELL SUCTION		
13S	RETURN TO CARGO CHECK VALVE	35S	STRIPPING VALVE		
15S	HEADER DISCHARGE VALVE	39S	PRES/VAC VALVE		

NOTE 1: CONTAINMENT TANK PORT & STARBOARD  
 NOTE 2: CONNECTS TO CARGO PUMP DISCHARGE PIPING  
 NOTE 3: CONNECTS TO CARGO RELIEF VALVE DISCHARGE PIPING

TRINITY MARINE PRODUCTS

REV.	DATE	BY	CHK	APP	REVISION DESCRIPTION
1	07/03/19	NRB	DDA		REVISED PER CLIENT COMMENTS
0	05/15/09	RB	WK	AB	APPROVED



**KIRBY INLAND MARINE**

**STRIPPING  
PIPING FLOW DIAGRAM**

**KIRBY 28101**

SCALE: NONE	REV. 1
PAGE: 3 OF 3	