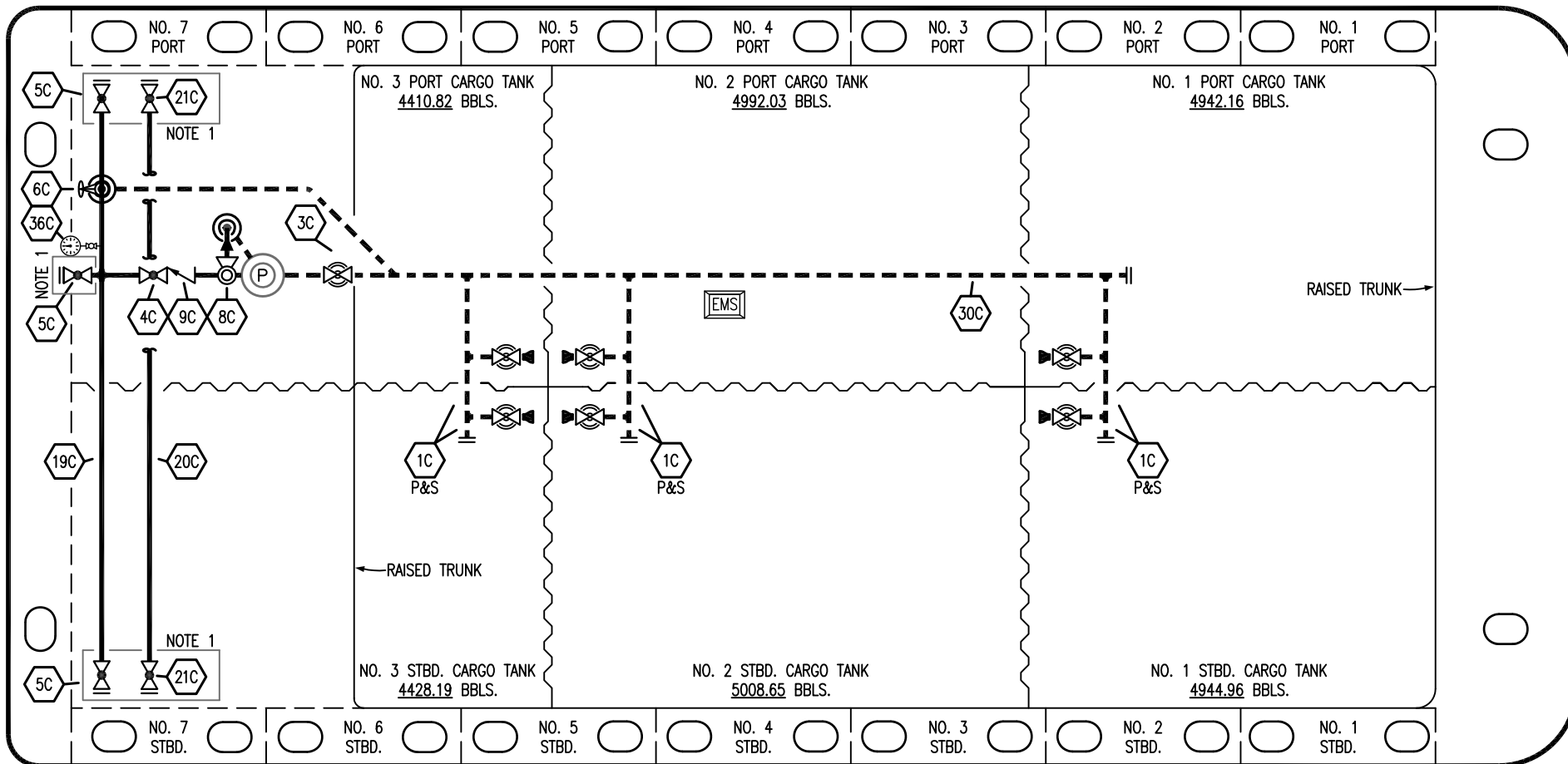


PORT



STERN


BOW

STARBOARD

NO	DESCRIPTION	NO	DESCRIPTION
1C	CARGO TANK VALVE	19C	CARGO HEADER
2C	LOAD VALVE	20C	DUMMY PIPELINE
3C	MASTER SUCTION VALVE	21C	DUMMY HEADER VALVE
4C	DISCHARGE VALVE	30C	CARGO PIPELINE
5C	HEADER VALVE	36C	PRESSURE GAUGE
6C	SALVAGE VALVE	37C	CARGO DROP
8C	RELIEF VALVE	—	ABOVE DECK PIPING
9C	CHECK VALVE	---	BELOW DECK PIPING

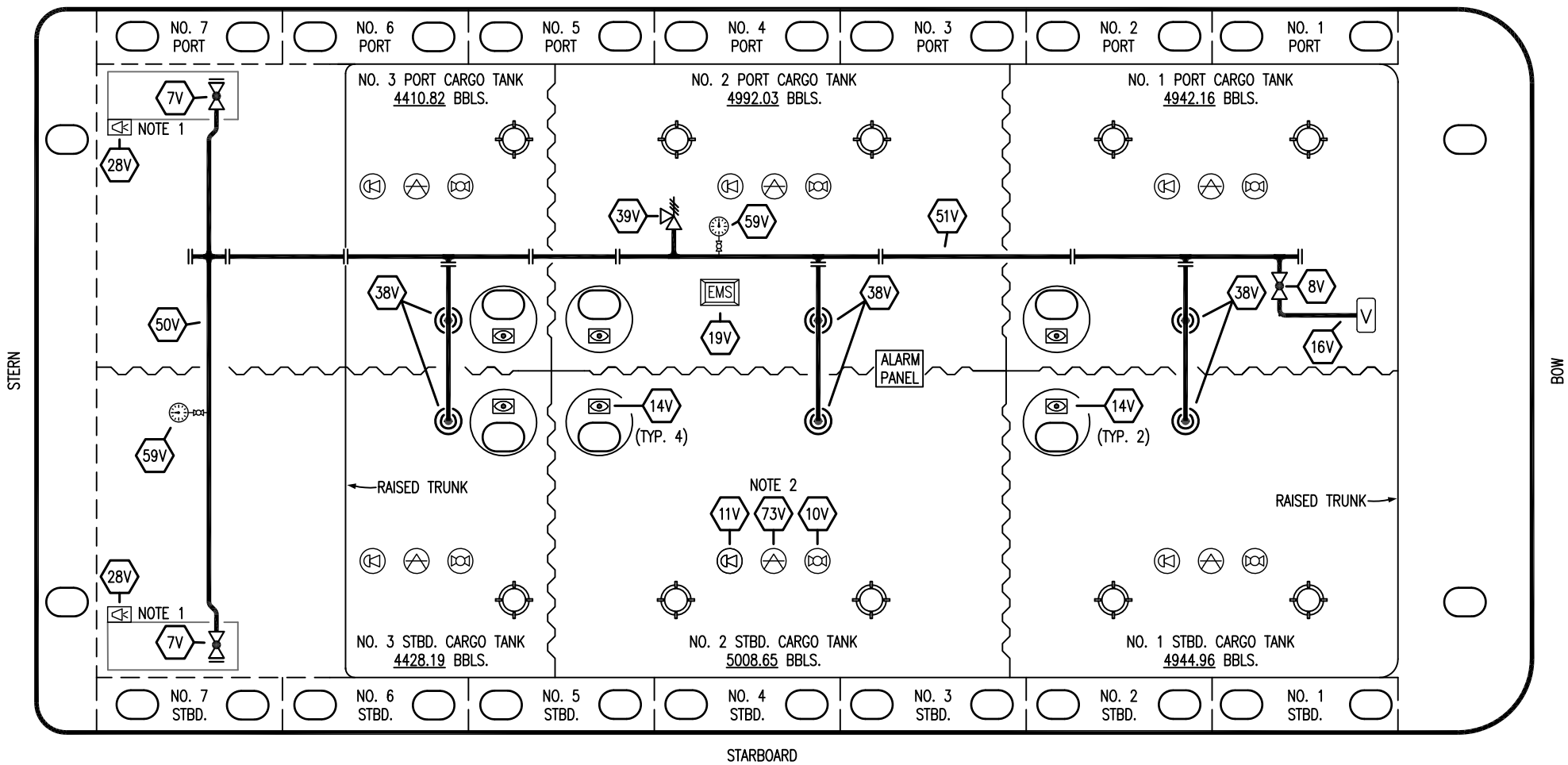
NOTE 1: CONTAINMENT P/S

EX: SMS 30053

						KIRBY INLAND MARINE 	
						<b>CARGO</b>	
						<b>PIPING FLOW DIAGRAM</b>	
0	10/12/23	MRV	DDA	DC	ISSUED FOR APPROVAL	SCALE: NONE	<b>KIRBY 28091</b>
REV.	DATE	BY	CHK	APP	REVISION DESCRIPTION	PAGE: 1 OF 3	

REV. **0**

PORT



STARBOARD

NO	DESCRIPTION	NO	DESCRIPTION
7V	HEADER VALVE	38V	VAPOR PENETRATION (⊙)
8V	VENT STACK VALVE	39V	PRESSURE/VACUUM VALVE
9V	DRAIN VALVE	50V	VAPOR HEADER
10V	HIGH LEVEL/OVERFILL ALARM	51V	VAPOR PIPELINE
11V	1-METER GAUGE STICK	59V	PRESS/VAC GAUGE
16V	VAPOR VENT STACK	73V	MMC GAUGE POINT
19V	EMERGENCY ENGINE SHUT DOWN	—	ABOVE DECK PIPING
28V	DOCK CONNECTION ALARM		

NOTE 2: TYPICAL RIGGING IN EACH TANK  
 NOTE 1: CONTAINMENT P/S

EX: SMS 30053

0	10/12/23	MRV	DDA	DC	ISSUED FOR APPROVAL
REV.	DATE	BY	CHK	APP	REVISION DESCRIPTION

## KIRBY INLAND MARINE

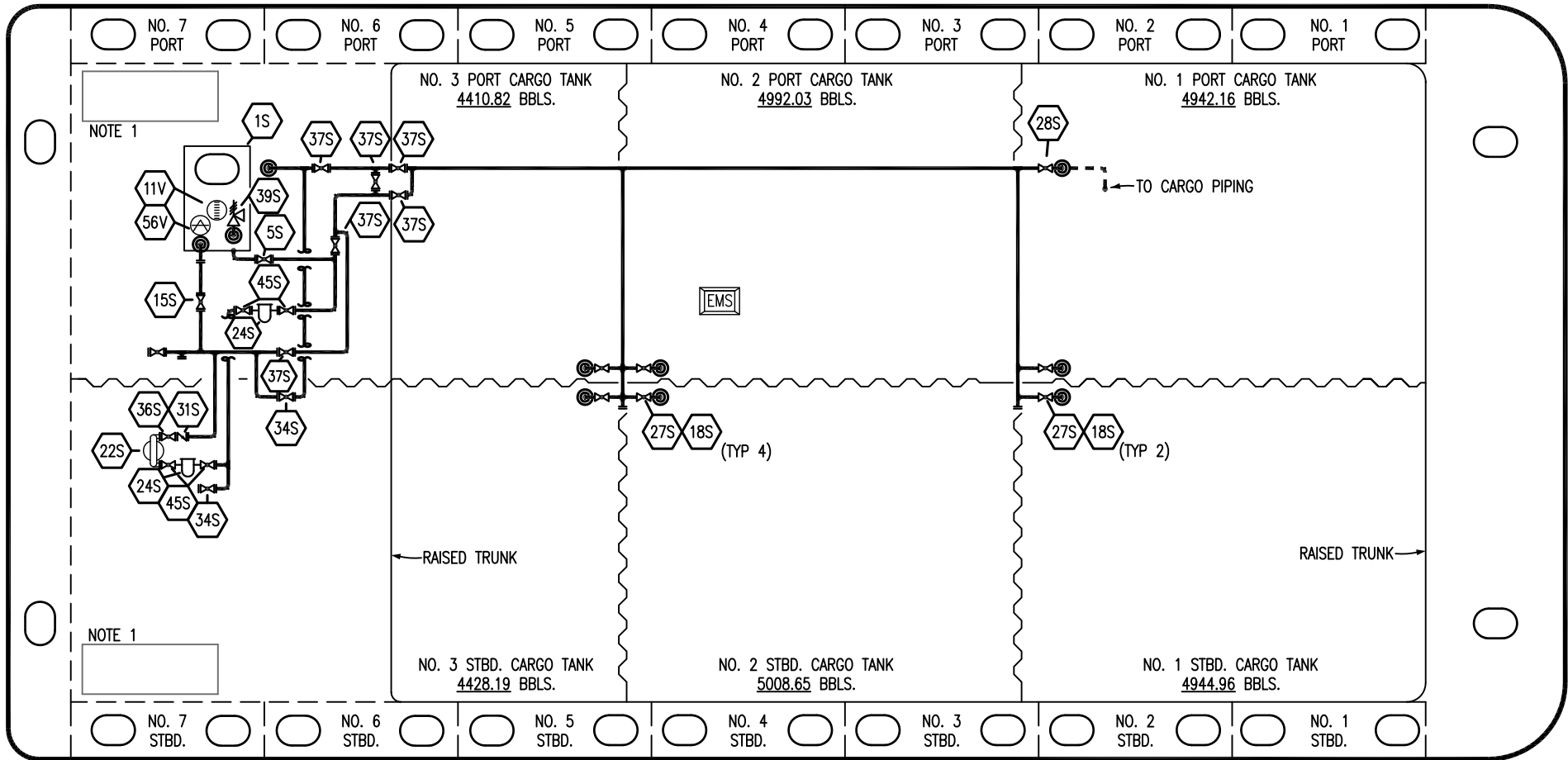
### VAPOR PIPING FLOW DIAGRAM

**KIRBY 28091**

SCALE: NONE  
PAGE: 2 OF 3

**REV. 0**

PORT



STERN

BOW


NO	DESCRIPTION	NO	DESCRIPTION
1S	SLOP TANK	32S	PUMP WELL PRIMER VALVE
5S	SLOP TANK SUCTION VALVE	33S	PUMP WELL SUCTION VALVE
15S	RETURN TO TANK	34S	DEEPWELL PRIME VALVE
16S	REMOTE SUCTION CONNECTION	36S	STRIPPING PUMP DISCHARGE VALVE
18S	STRIPPING DROP (⊙)	37S	BLOCK VALVE
22S	STRIPPING PUMP	39S	P/V VALVE
24S	BASKET STRAINER	45S	STRIPPING PUMP SUCTION VALVE
26S	STRIPPING HEADER BLOCK VALVE	11V	GAUGE STICK
27S	SUMP SUCTION VALVE	56V	GAUGE POINT
28S	CARGO PIPING SUCTION	—	ABOVE DECK PIPING
31S	CHECK VALVE	- - -	BELOW DECK PIPING

STARBOARD

NOTE 1: CONTAINMENT P/S

EX: SMS 30053

REV.	DATE	BY	CHK	APP	REVISION DESCRIPTION
0	10/12/23	MRV	DDA	DC	ISSUED FOR APPROVAL



**KIRBY INLAND MARINE**

**STRIPPING**

**PIPING FLOW DIAGRAM**

**KIRBY 28091**

SCALE: NONE	REV. 0
PAGE: 3 OF 3	