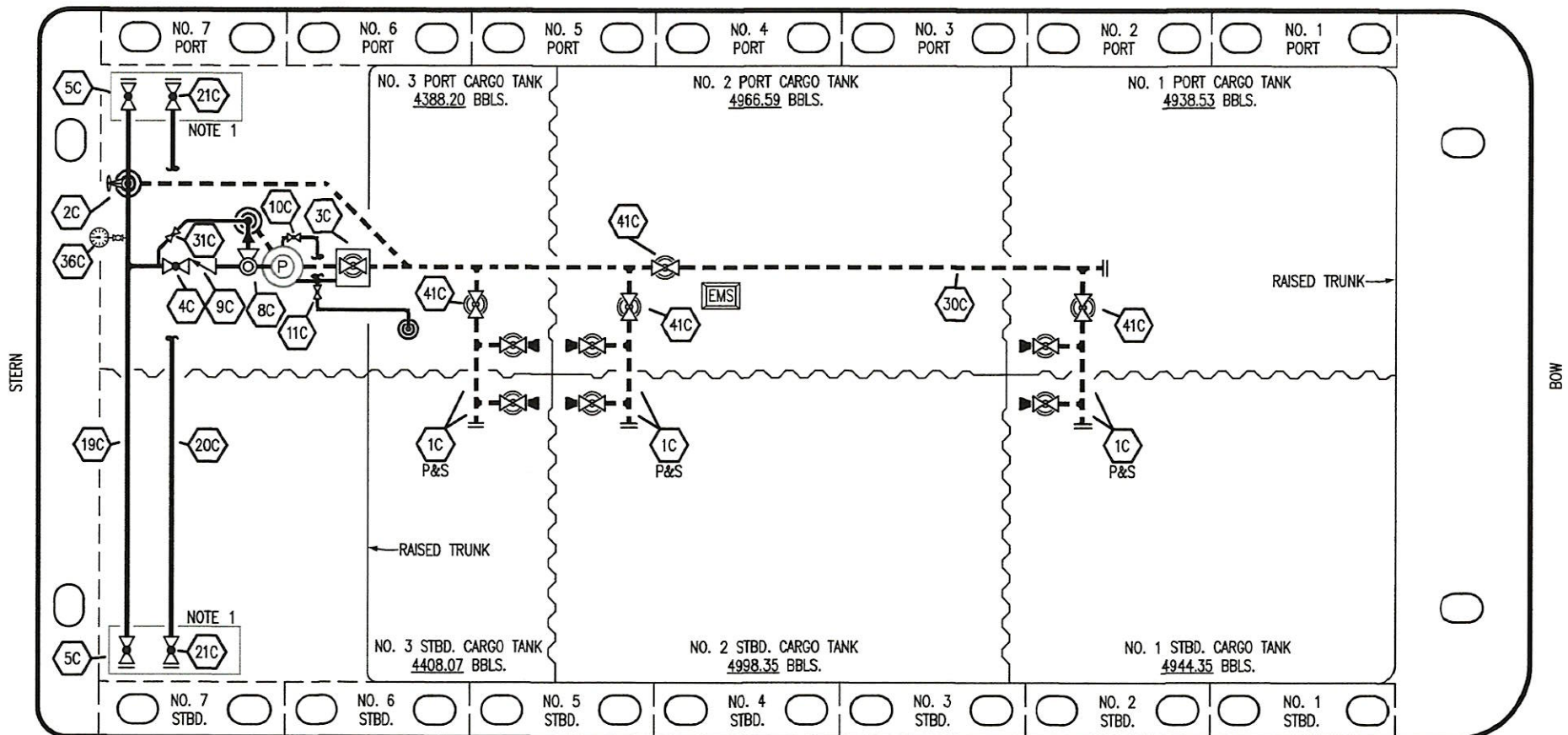


PORT



STARBOARD

NO	DESCRIPTION	NO	DESCRIPTION
1C	CARGO TANK VALVE	19C	CARGO HEADER
2C	LOAD VALVE	20C	DUMMY PIPELINE
3C	MASTER SUCTION VALVE	21C	DUMMY HEADER VALVE
4C	DISCHARGE VALVE	30C	CARGO PIPELINE
5C	HEADER VALVE	31C	BYPASS VALVE
8C	RELIEF VALVE	36C	PRESSURE GAUGE
9C	CHECK VALVE	37C	CARGO DROP
10C	BURP VALVE	41C	SUCTION BLOCK VALVE
11C	BLEED OFF VALVE	—	— ABOVE DECK PIPING
12C	BURP VALVE RETURN TO CARGO TANK	---	--- BELOW DECK PIPING

NOTE 1: CONTAINMENT P/S

EX: SMS 30044

REV.	DATE	BY	CHK	APP	REVISION DESCRIPTION
0	03/02/23	MRV	DDA	FIX	ISSUED FOR APPROVAL

KIRBY INLAND MARINE 

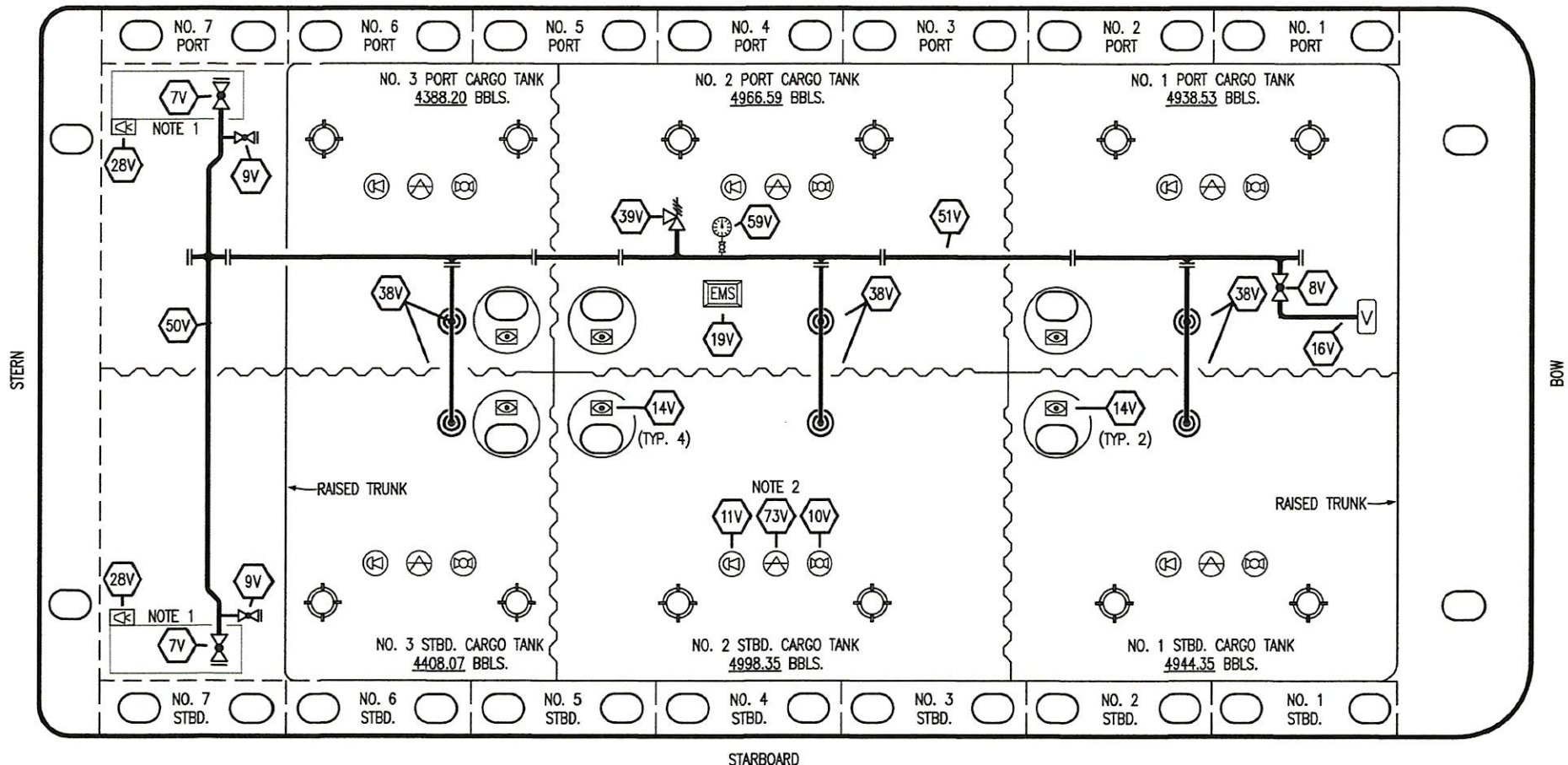
**CARGO
PIPING FLOW DIAGRAM**

SCALE: NONE
PAGE: 1 OF 3

KIRBY 28088

REV. **0**

PORT



STARBOARD

- | NO | DESCRIPTION |
|-----|----------------------------|
| 7V | 8" HEADER VALVE |
| 8V | 8" VENT STACK VALVE |
| 9V | DRAIN VALVE |
| 10V | HIGH LEVEL/OVERFILL ALARM |
| 11V | 1-METER GAUGE STICK |
| 16V | VAPOR VENT STACK |
| 19V | EMERGENCY ENGINE SHUT DOWN |
| 28V | DOCK CONNECTION ALARM |

- | NO | DESCRIPTION |
|-----|--------------------------|
| 38V | 8" VAPOR PENETRATION (⊙) |
| 39V | PRESSURE/VACUUM VALVE |
| 50V | 8" VAPOR HEADER |
| 51V | 8" VAPOR PIPELINE |
| 59V | PRESS/VAC GAUGE |
| 73V | MMC GAUGE POINT |
| — | ABOVE DECK PIPING |

NOTE 2: TYPICAL RIGGING IN EACH TANK

NOTE 1: CONTAINMENT P/S

EX: SMS 30044

REV.	DATE	BY	CHK	APP	REVISION DESCRIPTION
0	03/02/23	MRV	DDA	FIX	ISSUED FOR APPROVAL

KIRBY INLAND MARINE 

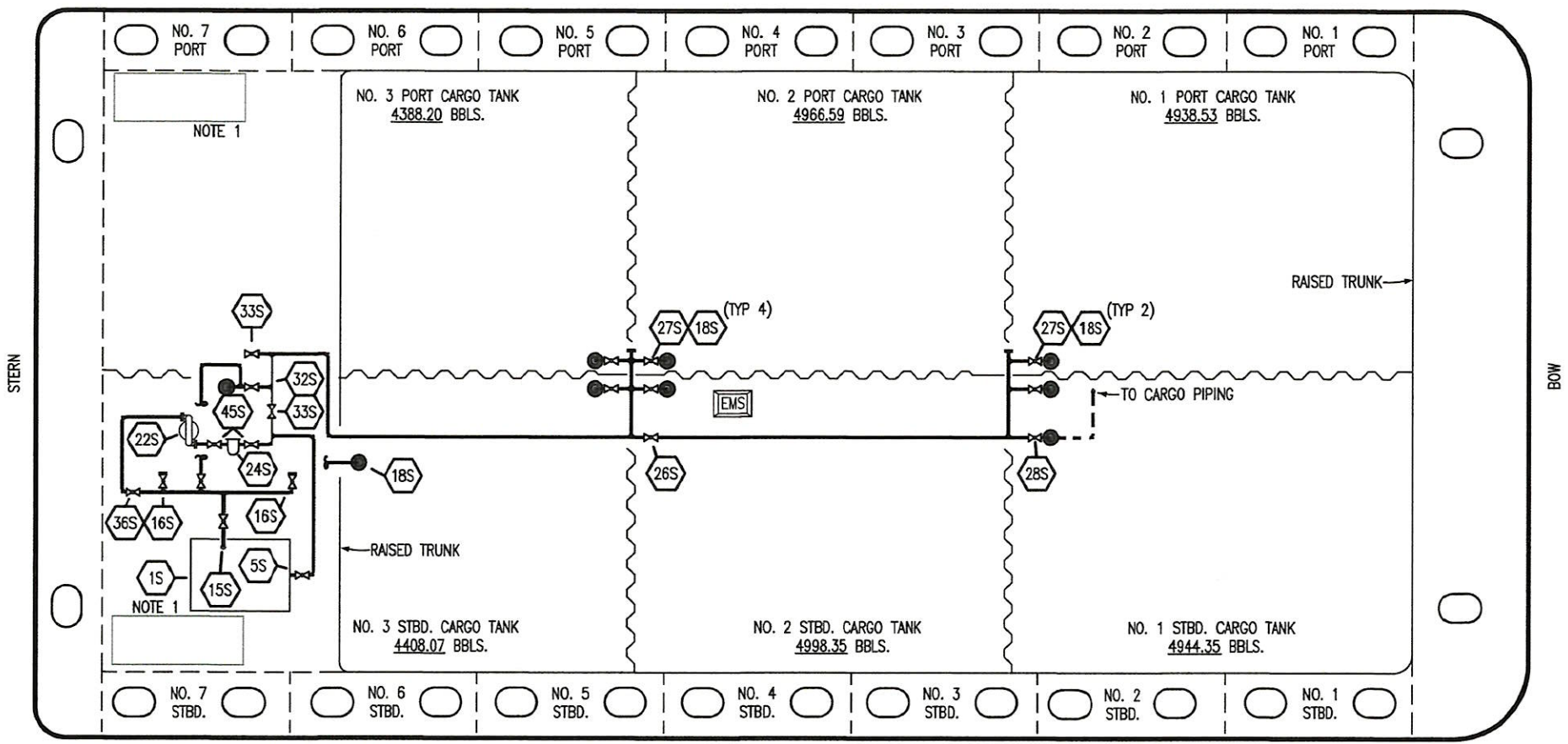
**VAPOR
PIPING FLOW DIAGRAM**

SCALE: NONE
PAGE: 2 OF 3

KIRBY 28088

REV. **0**

PORT



STARBOARD

- | | | | |
|-----|------------------------------------|-------|------------------------------|
| NO | DESCRIPTION | NO | DESCRIPTION |
| 1S | SLOP TANK | 27S | SUMP SUCTION VALVE |
| 5S | SLOP TANK SUCTION VALVE | 28S | CARGO PIPING SUCTION |
| 10S | STRIPPING PUMP CHECK VALVE | 31S | CHECK VALVE |
| 11S | LOWER CARGO PIPELINE SUCTION VALVE | 32S | PUMP WELL PRIMER VALVE |
| 15S | DISCHARGE VALVE | 33S | PUMP WELL SUCTION |
| 16S | REMOTE SUCTION CONNECTION | 36S | STRIPPING PUMP DISCHARGE |
| 18S | TYP. STRIPPING PENETRATION (⊙) | 45S | STRIPPING PUMP SUCTION VALVE |
| 22S | STRIPPING PUMP | — | ABOVE DECK PIPING |
| 24S | BASKET STRAINER | - - - | BELOW DECK PIPING |
| 26S | HEADER BLOCK VALVE | | |

NOTE 1: CONTAINMENT P/S

EX: SMS 30044

0	03/02/23	MRV	DDA	FIX	ISSUED FOR APPROVAL
REV.	DATE	BY	CHK	APP	REVISION DESCRIPTION

KIRBY INLAND MARINE 

**STRIPPING
PIPING FLOW DIAGRAM**

SCALE: NONE
PAGE: 3 OF 3

KIRBY 28088

REV. **0**