

NO	DESCRIPTION	NO	DESCRIPTION
1C	CARGO TANK VALVE	12C	BURP VALVE RETURN TO CARGO TANK
2C	LOAD VALVE	13C	CARGO BLOCK VALVE
3C	MASTER SUCTION VALVE	19C	CARGO HEADER
4C	DISCHARGE VALVE	30C	CARGO PIPELINE
5C	HEADER VALVE	37C	CARGO DROP
6C	SALVAGE VALVE	1S	SLOP TANK (3000 GAL)
8C	RELIEF VALVE	—	— ABOVE DECK PIPING
9C	CARGO CHECK VALVE	---	--- BELOW DECK PIPING
10C	BURP VALVE		
11C	BLEED OFF VALVE		

NOTE 1: CONTAINMENT P/S

TRINITY MARINE

1	12/17/21	MRV	DDA	JF	REVISED PER CLIENT COMMENTS
0	03/23/09	RB	RB	OF	APPROVED
REV.	DATE	BY	CHK	APP	REVISION DESCRIPTION

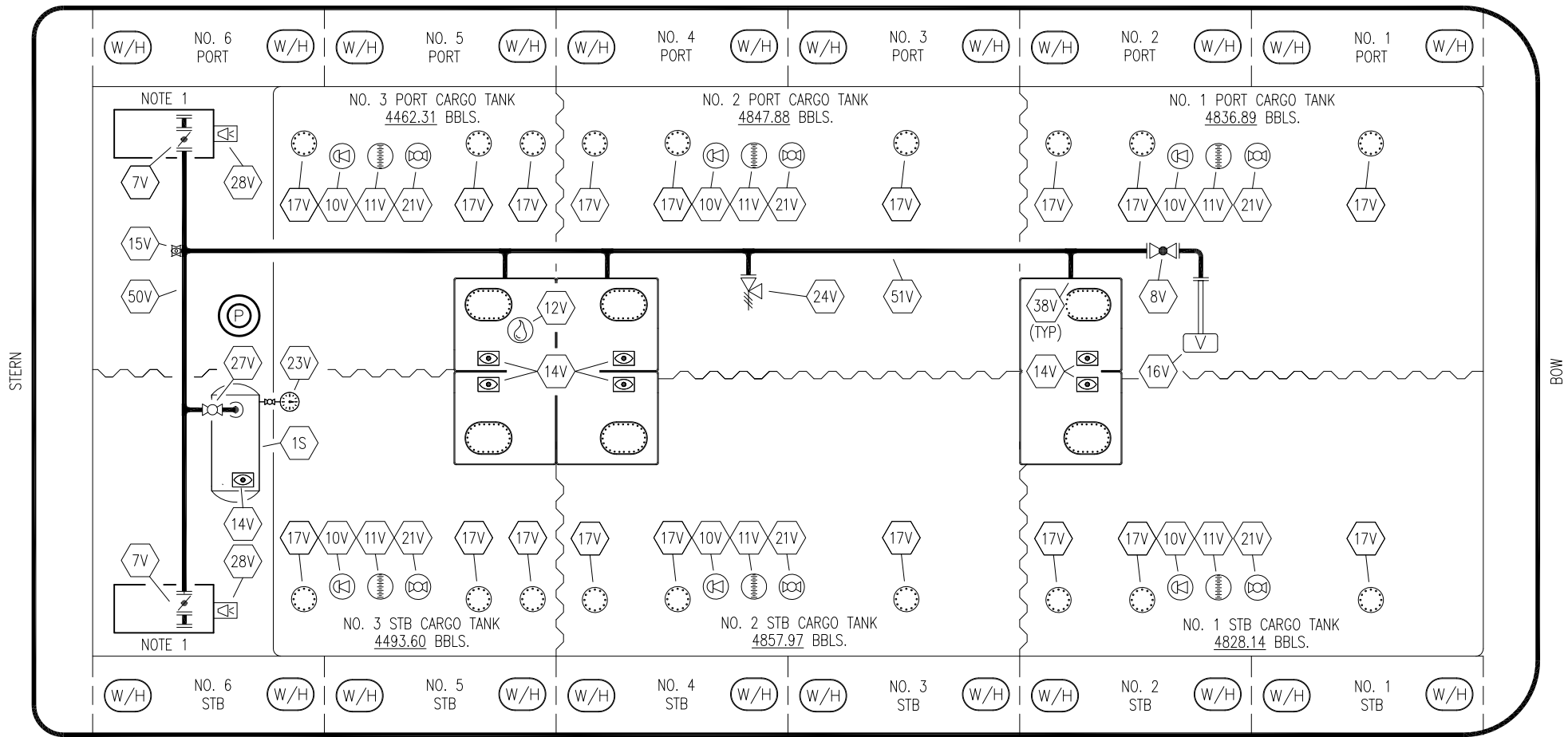
KIRBY INLAND MARINE

CARGO
PIPING FLOW DIAGRAM

KIRBY 28081

REV. 1

SCALE: NONE
PAGE: 1 OF 3



NOTE 1: CONTAINMENT P/S

NO	SIZE	DESCRIPTION	NO	SIZE	DESCRIPTION
1S		SLOP TANK (3000 GAL.)	21V	2"	HERMETIC GAUGE
7V	8"	HEADER VALVE	23V	1/4"	PRESSURE/VAC GAUGE
8V	8"	VENT STACK VALVE	24V	6"	PRESSURE RELIEF VALVE
10V	8"	HIGH LEVEL/OVERFILL ALARM	27V	2"	SLOP TANK VENT VALVE
11V	8"	1 METER GAUGE STICK	28V		HIGH LEVEL DOCK ALARM
12V	2"	HERMETIC SAMPLE	38V		VAPOR PENETRATION
14V	8"	SIGHT GLASS	50V		VAPOR HEADER
15V	2"	INSPECTION PORT	51V		VAPOR PIPELINE
16V	8"	VAPOR VENT STACK			— ABOVE DECK PIPING
17V	19"	BUTTERWORTH			
19V		EMERGENCY SHUTDOWN SYSTEM			

TRINITY MARINE

KIRBY INLAND MARINE 

**VAPOR
PIPING FLOW DIAGRAM**

REV.	DATE	BY	CHK	APP	REVISION DESCRIPTION
1	12/17/21	MRV	DDA	JF	REVISED PER CLIENT COMMENTS
0	03/23/09	RB	RB	OF	APPROVED

