

NOTE 1: CONTAINMENT P/S

|     |                      |     |                      |
|-----|----------------------|-----|----------------------|
| NO  | DESCRIPTION          | NO  | DESCRIPTION          |
| 1C  | CARGO TANK VALVE     | 19C | CARGO HEADER         |
| 2C  | LOAD VALVE           | 30C | CARGO PIPELINE       |
| 3C  | MASTER SUCTION VALVE | 37C | CARGO DROP           |
| 4C  | DISCHARGE VALVE      | 1S  | SLOP TANK (3000 GAL) |
| 5C  | HEADER VALVE         | —   | —                    |
| 8C  | RELIEF VALVE         | —   | —                    |
| 9C  | CARGO CHECK VALVE    | —   | —                    |
| 13C | CARGO BLOCK VALVE    | —   | —                    |

— ABOVE DECK PIPING  
 - - - BELOW DECK PIPING

TRINITY MARINE

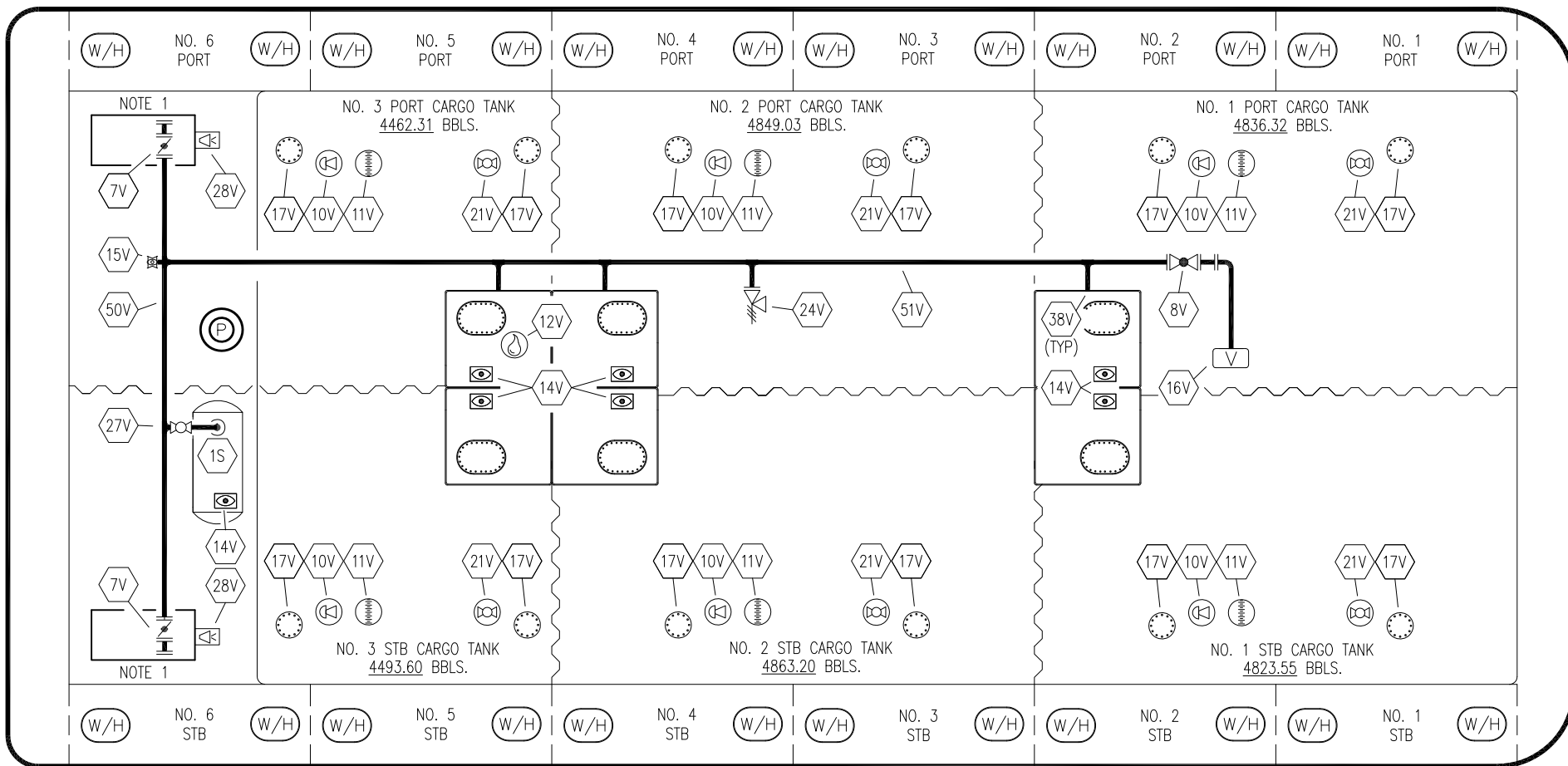
KIRBY INLAND MARINE 

**CARGO  
 PIPING FLOW DIAGRAM**

| REV. | DATE     | BY  | CHK | APP | REVISION DESCRIPTION        |
|------|----------|-----|-----|-----|-----------------------------|
| 2    | 12/17/21 | MRV | DDA | TL  | REVISED PER CLIENT COMMENTS |
| 1    | 02-03-14 | GP  | GP  | OF  | REVISED PER CLIENT          |
| 0    | 03-23-09 | RB  | RB  | OF  | APPROVED                    |

STERN

BOW



- |     |                              |          |                          |
|-----|------------------------------|----------|--------------------------|
| NO  | DESCRIPTION                  | NO       | DESCRIPTION              |
| 1S  | SLOP TANK (3000 GAL.)        | 19V      | EMERGENCY SHUTDOWN       |
| 7V  | 8" HEADER VALVE              | 21V      | 2" HERMETIC GAUGE        |
| 8V  | 8" VENT STACK VALVE          | 24V      | 6" PRESSURE RELIEF VALVE |
| 10V | 8" HIGH LEVEL/OVERFILL ALARM | 27V      | 2" SLOP TANK VENT VALVE  |
| 11V | 8" 1 METER GAUGE STICK       | 28V      | HIGH LEVEL DOCK ALARM    |
| 12V | 2" HERMETIC SAMPLE           | 38V      | VAPOR PENETRATION        |
| 14V | 8" SIGHT GLASS               | 50V      | VAPOR HEADER             |
| 15V | 2" INSPECTION PORT           | 51V      | VAPOR PIPELINE           |
| 16V | 8" VAPOR VENT STACK          | <b>—</b> | ABOVE DECK PIPING        |
| 17V | 19" BUTTERWORTH              |          |                          |

NOTE 1: CONTAINMENT P/S

TRINITY MARINE

KIRBY INLAND MARINE 

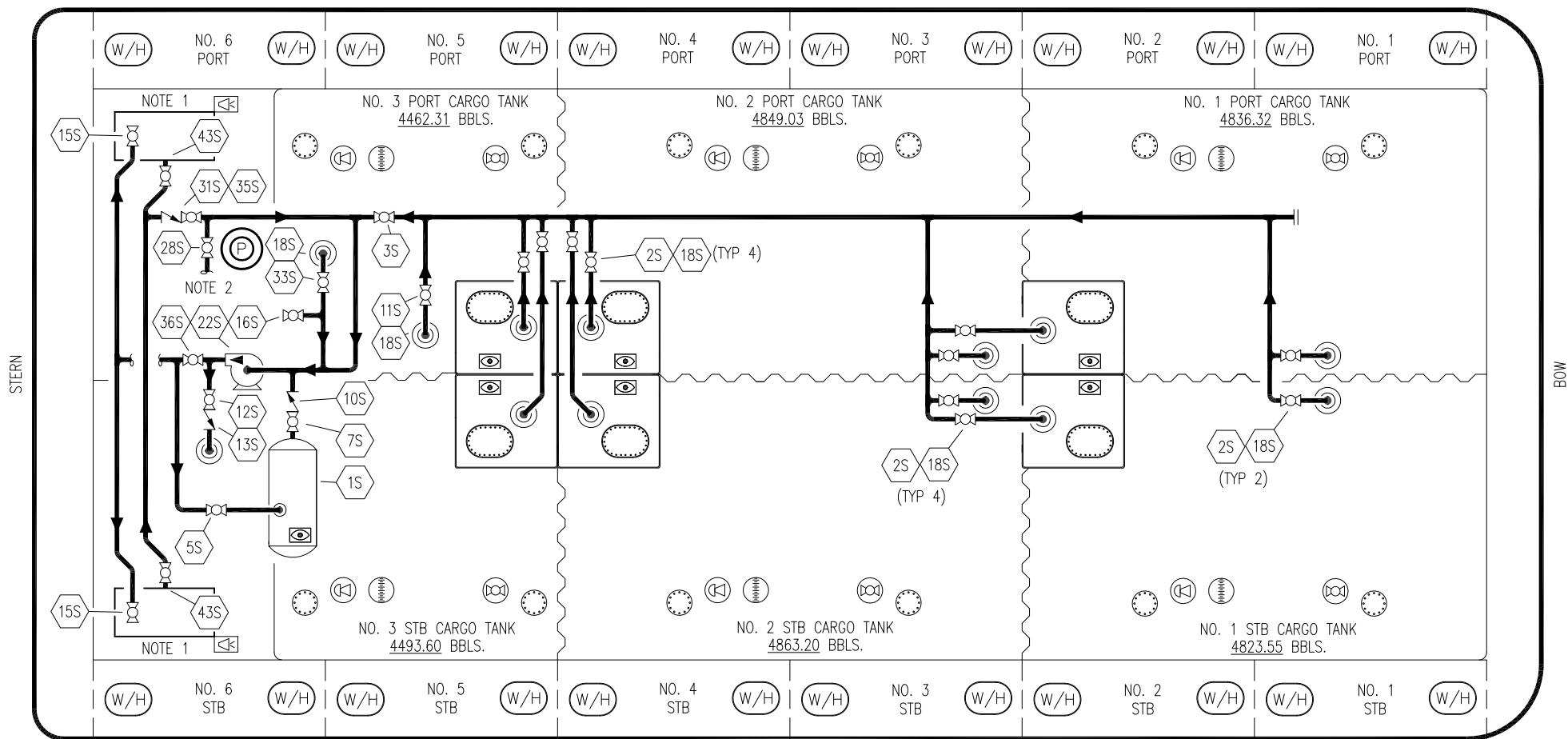
**VAPOR  
PIPING FLOW DIAGRAM**

|      |          |     |     |     |                             |
|------|----------|-----|-----|-----|-----------------------------|
| 1    | 12/17/21 | MRV | DDA | TL  | REVISED PER CLIENT COMMENTS |
| 0    | 04/20/09 | WK  | RB  | OF  | APPROVED                    |
| REV. | DATE     | BY  | CHK | APP | REVISION DESCRIPTION        |

SCALE: NONE  
PAGE: 2 OF 3

**KIRBY 28080**

REV. **1**



| NO  | DESCRIPTION                  | NO  | DESCRIPTION                  |
|-----|------------------------------|-----|------------------------------|
| 1S  | SLOP TANK                    | 18S | STRIPPING DROP               |
| 2S  | VALVE CARGO TANK             | 22S | STRIPPING PUMP               |
| 3S  | VALVE MAIN CARGO PIPING      | 26S | STRIPPING HEADER BLOCK VALVE |
| 5S  | SLOP TANK SUCTION VALVE      | 28S | CARGO HEADER STRIPPING VALVE |
| 7S  | SLOP TANK VALVE              | 31S | CHECK VALVE                  |
| 10S | SLOP TANK CHECK VALVE        | 33S | PUMP WELL SUCTION            |
| 11S | CARGO PIPELINE SUCTION VALVE | 35S | STRIPPING VALVE              |
| 12S | RETURN TO CARGO TANK VALVE   | 36S | STRIPPING PUMP DISCHARGE     |
| 13S | RETURN TO CARGO CHECK VALVE  | 39S | PRESSURE/ VACUUM VALVE       |
| 15S | DISCHARGE CARGO VALVE        | 43S | DRIP PAN SUCTION VALVE       |
| 16S | REMOTE SUCTION CONNECTION    | —   | ABOVE DECK PIPING            |

NOTE 1: CONTAINMENT P/S  
 NOTE 2: TO CARGO PUMP DISCHARGE

TRINITY MARINE

KIRBY INLAND MARINE 

**STRIPPING  
 PIPING FLOW DIAGRAM**

| REV. | DATE     | BY  | CHK | APP | REVISION DESCRIPTION        |
|------|----------|-----|-----|-----|-----------------------------|
| 1    | 12/17/21 | MRV | DDA | TL  | REVISED PER CLIENT COMMENTS |
| 0    | 04/20/09 | WK  | RB  | OF  | APPROVED                    |

SCALE: NONE  
 PAGE: 3 OF 3

**KIRBY 28080**

REV. **1**