

NOTE 1: CONTAINMENT P/S

NO	DESCRIPTION	NO	DESCRIPTION
1C	CARGO TANK VALVE	19C	CARGO HEADER
2C	LOAD VALVE	30C	CARGO PIPELINE
3C	MASTER SUCTION VALVE	37C	CARGO DROP
4C	DISCHARGE VALVE	1S	SLOP TANK (3000 GAL)
5C	HEADER VALVE	—	—
6C	SALVAGE VALVE	—	—
8C	RELIEF VALVE	—	—
9C	CARGO CHECK VALVE	—	—
13C	CARGO BLOCK VALVE	—	—

— ABOVE DECK PIPING
 - - - BELOW DECK PIPING

TRINITY MARINE

KIRBY INLAND MARINE 

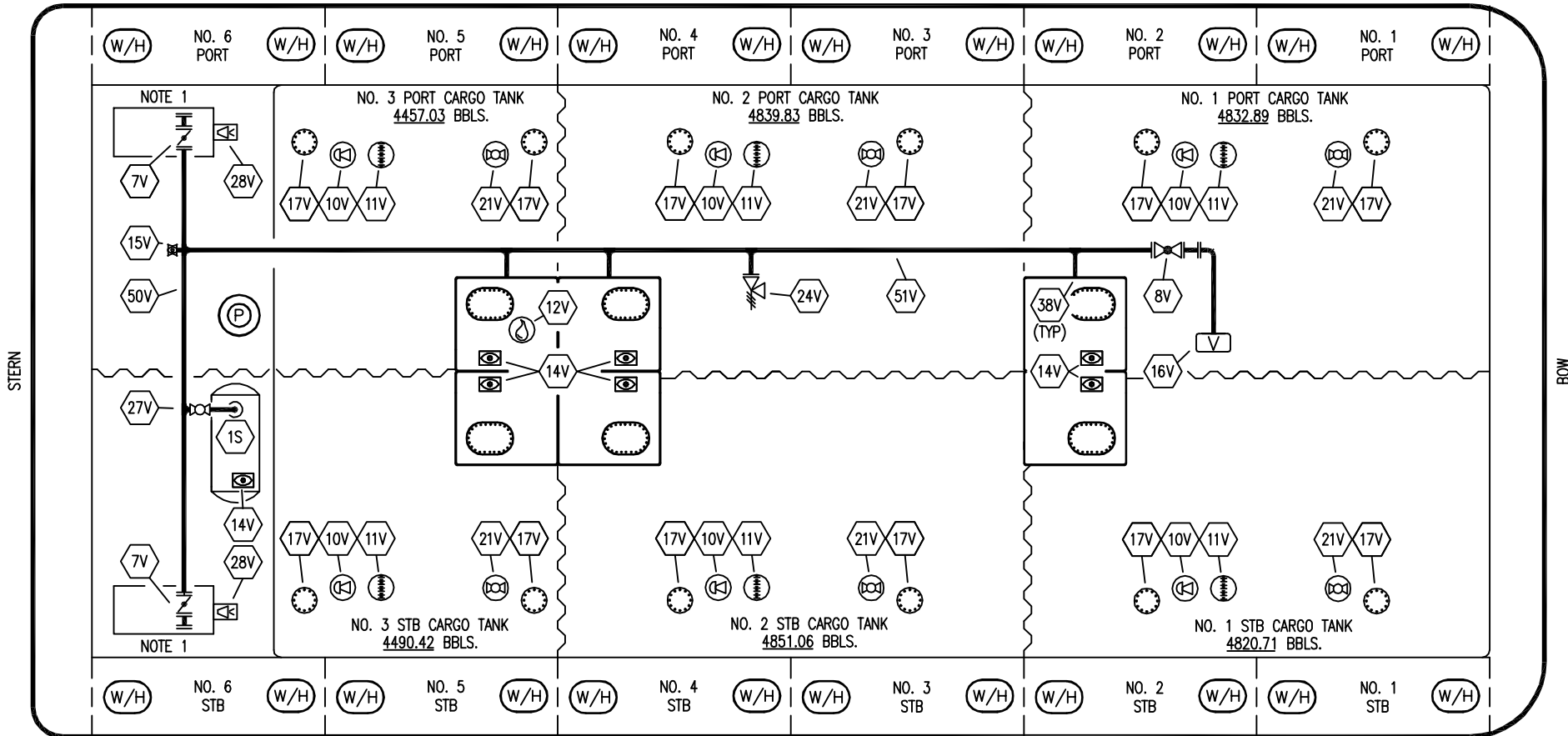
**CARGO
 PIPING FLOW DIAGRAM**

REV.	DATE	BY	CHK	APP	REVISION DESCRIPTION
1	02-03-14	GP	GP	OF	REVISED PER CLIENT
0	03-23-09	RB	RB	OF	APPROVED

SCALE: NONE
 PAGE: 1 OF 3

KIRBY 28079

REV. 1



- | | | | |
|-----|------------------------------|---------------------|--------------------------|
| NO | DESCRIPTION | NO | DESCRIPTION |
| 1S | SLOP TANK (3000 GAL.) | 19V | EMERGENCY SHUTDOWN |
| 7V | 8" HEADER VALVE | 21V | 2" HERMETIC GAUGE |
| 8V | 8" VENT STACK VALVE | 24V | 6" PRESSURE RELIEF VALVE |
| 10V | 8" HIGH LEVEL/OVERFILL ALARM | 27V | 2" SLOP TANK VENT VALVE |
| 11V | 8" 1 METER GAUGE STICK | 28V | HIGH LEVEL DOCK ALARM |
| 12V | 2" HERMETIC SAMPLE | 38V | VAPOR PENETRATION |
| 14V | 8" SIGHT GLASS | 50V | VAPOR HEADER |
| 15V | 2" INSPECTION PORT | 51V | VAPOR PIPELINE |
| 16V | 8" VAPOR VENT STACK | — ABOVE DECK PIPING | |
| 17V | 19" BUTTERWORTH | | |

NOTE 1: CONTAINMENT P/S

TRINITY MARINE

KIRBY INLAND MARINE 

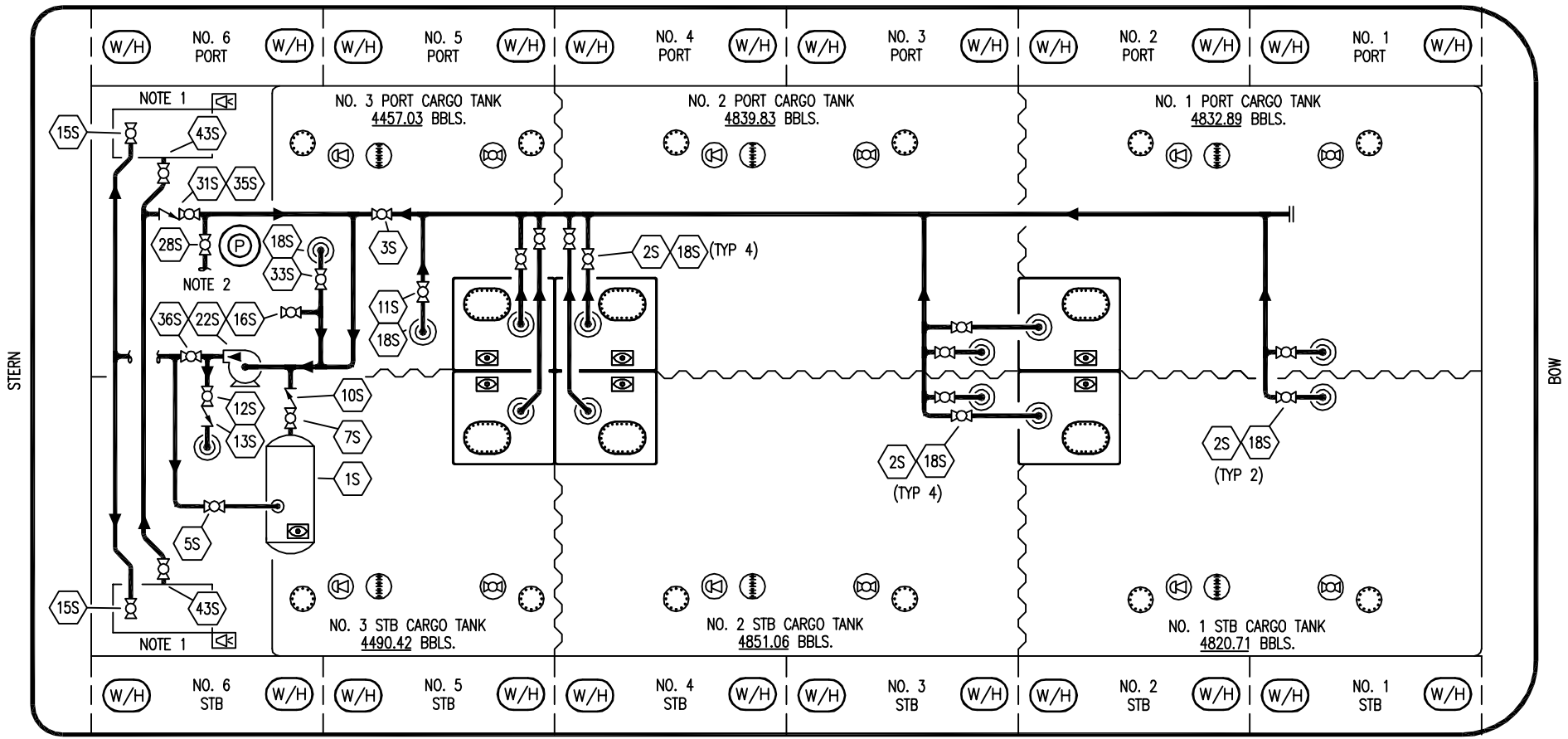
**VAPOR
PIPING FLOW DIAGRAM**

REV.	DATE	BY	CHK	APP	REVISION DESCRIPTION
0	04/20/09	WK	RB	OF	APPROVED

SCALE: NONE
PAGE: 2 OF 3

KIRBY 28079

REV. 0



- | | | | |
|-----|------------------------------|-----|------------------------------|
| NO | DESCRIPTION | NO | DESCRIPTION |
| 1S | SLOP TANK | 18S | STRIPPING DROP ☉ |
| 2S | VALVE CARGO TANK | 22S | STRIPPING PUMP |
| 3S | VALVE MAIN CARGO PIPING | 26S | STRIPPING HEADER BLOCK VALVE |
| 5S | SLOP TANK SUCTION VALVE | 28S | CARGO HEADER STRIPPING VALVE |
| 7S | SLOP TANK VALVE | 31S | CHECK VALVE |
| 10S | SLOP TANK CHECK VALVE | 33S | PUMP WELL SUCTION |
| 11S | CARGO PIPELINE SUCTION VALVE | 35S | STRIPPING VALVE |
| 12S | RETURN TO CARGO TANK VALVE | 36S | STRIPPING PUMP DISCHARGE |
| 13S | RETURN TO CARGO CHECK VALVE | 39S | PRESSURE/ VACUUM VALVE |
| 15S | DISCHARGE CARGO VALVE | 43S | DRIP PAN SUCTION VALVE |
| 16S | REMOTE SUCTION CONNECTION | — | ABOVE DECK PIPING |

NOTE 1: CONTAINMENT P/S
 NOTE 2: TO CARGO PUMP DISCHARGE

TRINITY MARINE

<div style="display: flex; justify-content: space-between; align-items: center;"> <div style="font-size: 2em; font-weight: bold;">KIRBY INLAND MARINE</div> </div>								
STRIPPING								
PIPING FLOW DIAGRAM								
0	04/20/09	WK	RB	OF	APPROVED	SCALE: NONE	KIRBY 28079	REV.
REV.	DATE	BY	CHK	APP	REVISION DESCRIPTION	PAGE: 3 OF 3		0