


NOTE 1: CONTAINMENT P/S

NO	DESCRIPTION	NO	DESCRIPTION
1C	CARGO TANK VALVE	19C	CARGO HEADER
2C	LOAD VALVE	30C	CARGO PIPELINE
3C	MASTER SUCTION VALVE	37C	CARGO DROP
4C	DISCHARGE VALVE	1S	SLOP TANK (3000 GAL)
5C	HEADER VALVE	—	— ABOVE DECK PIPING
8C	RELIEF VALVE	—	— BELOW DECK PIPING
9C	CARGO CHECK VALVE		
13C	CARGO BLOCK VALVE		

TRINITY MARINE

REV.	DATE	BY	CHK	APP	REVISION DESCRIPTION
2	12/17/21	MRV	DDA	TL	REVISED PER CLIENT COMMENTS
1	02-03-14	GP	GP	OF	REVISED PER CLIENT
0	03-23-09	RB	RB	OF	APPROVED



KIRBY INLAND MARINE

CARGO

PIPING FLOW DIAGRAM

KIRBY 28078

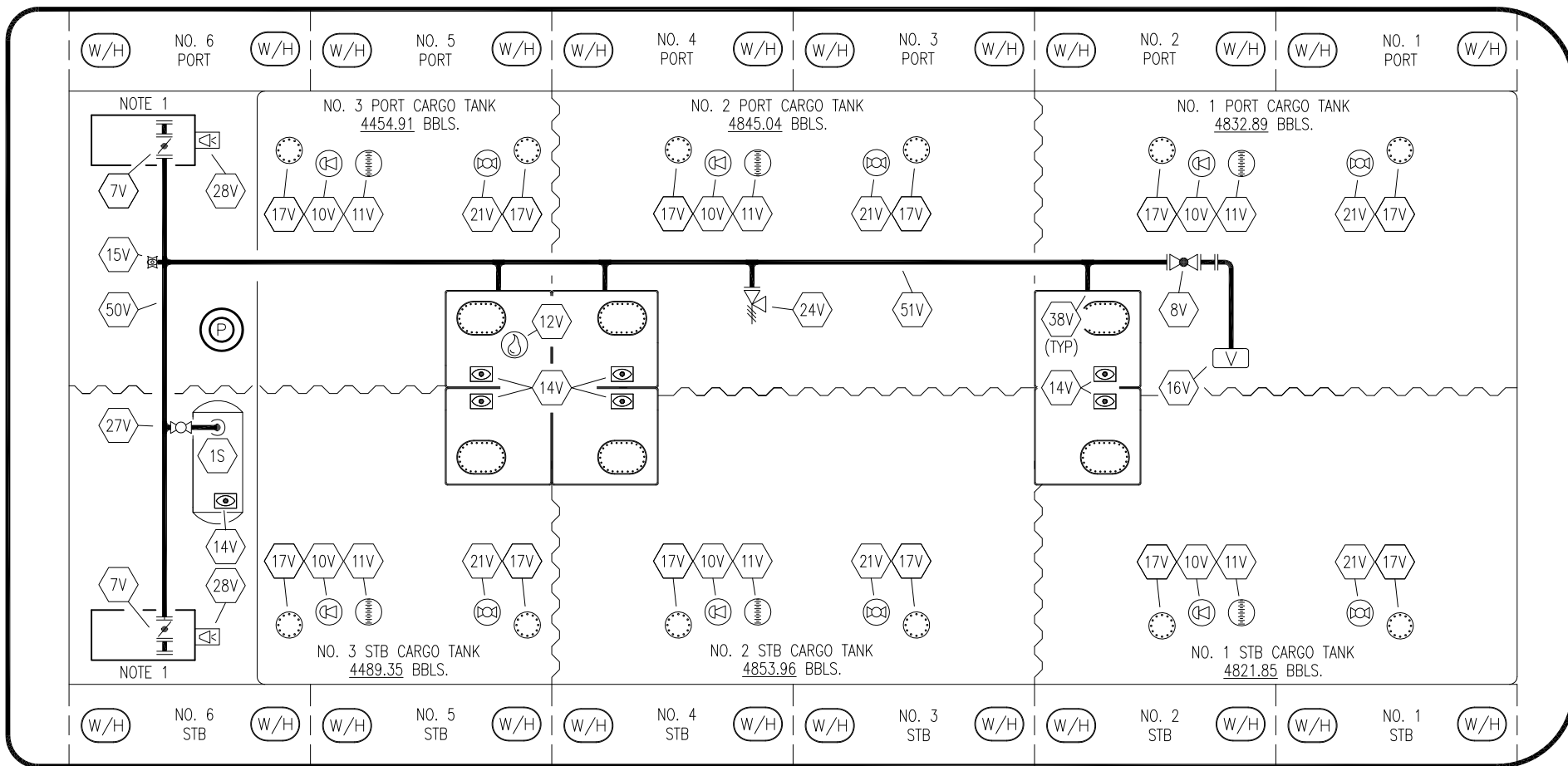
SCALE: NONE

PAGE: 1 OF 3

REV. **2**

STERN

BOW



- | | | | |
|-----|------------------------------|----------|--------------------------|
| NO | DESCRIPTION | NO | DESCRIPTION |
| 1S | SLOP TANK (3000 GAL.) | 19V | EMERGENCY SHUTDOWN |
| 7V | 8" HEADER VALVE | 21V | 2" HERMETIC GAUGE |
| 8V | 8" VENT STACK VALVE | 24V | 6" PRESSURE RELIEF VALVE |
| 10V | 8" HIGH LEVEL/OVERFILL ALARM | 27V | 2" SLOP TANK VENT VALVE |
| 11V | 8" 1 METER GAUGE STICK | 28V | HIGH LEVEL DOCK ALARM |
| 12V | 2" HERMETIC SAMPLE | 38V | VAPOR PENETRATION |
| 14V | 8" SIGHT GLASS | 50V | VAPOR HEADER |
| 15V | 2" INSPECTION PORT | 51V | VAPOR PIPELINE |
| 16V | 8" VAPOR VENT STACK | — | ABOVE DECK PIPING |
| 17V | 19" BUTTERWORTH | | |

NOTE 1: CONTAINMENT P/S

TRINITY MARINE

KIRBY INLAND MARINE 

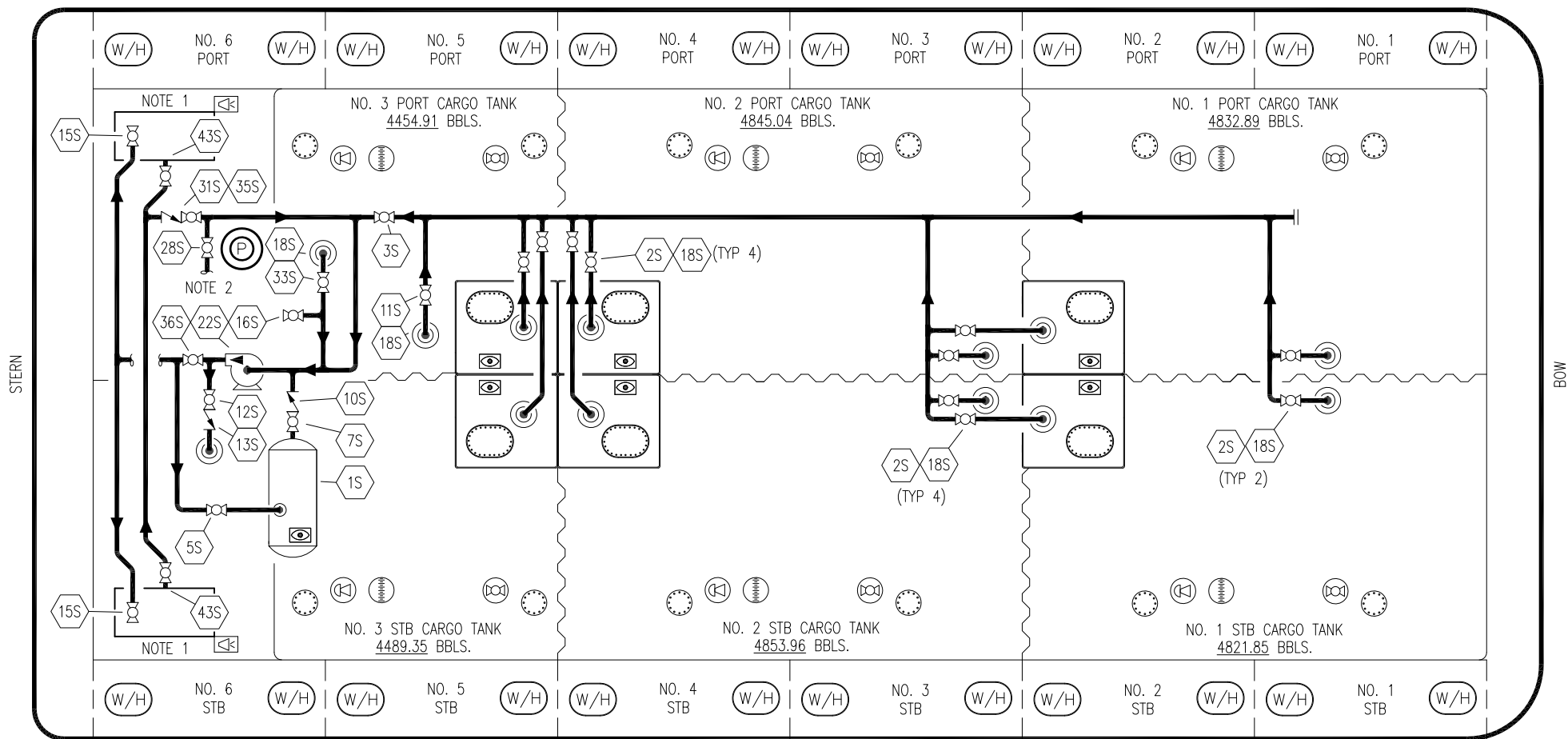
**VAPOR
PIPING FLOW DIAGRAM**

REV.	DATE	BY	CHK	APP	REVISION DESCRIPTION
1	12/17/21	MRV	DDA	TL	REVISED PER CLIENT COMMENTS
0	04/20/09	WK	RB	OF	APPROVED

SCALE: NONE
PAGE: 2 OF 3

KIRBY 28078

REV. **1**



NO	DESCRIPTION	NO	DESCRIPTION
1S	SLOP TANK	18S	STRIPPING DROP
2S	VALVE CARGO TANK	22S	STRIPPING PUMP
3S	VALVE MAIN CARGO PIPING	26S	STRIPPING HEADER BLOCK VALVE
5S	SLOP TANK SUCTION VALVE	28S	CARGO HEADER STRIPPING VALVE
7S	SLOP TANK VALVE	31S	CHECK VALVE
10S	SLOP TANK CHECK VALVE	33S	PUMP WELL SUCTION
11S	CARGO PIPELINE SUCTION VALVE	35S	STRIPPING VALVE
12S	RETURN TO CARGO TANK VALVE	36S	STRIPPING PUMP DISCHARGE
13S	RETURN TO CARGO CHECK VALVE	39S	PRESSURE/ VACUUM VALVE
15S	DISCHARGE CARGO VALVE	43S	DRIP PAN SUCTION VALVE
16S	REMOTE SUCTION CONNECTION		
			— ABOVE DECK PIPING

NOTE 1: CONTAINMENT P/S
NOTE 2: TO CARGO PUMP DISCHARGE

TRINITY MARINE

REV.	DATE	BY	CHK	APP	REVISION DESCRIPTION
1	12/17/21	MRV	DDA	TL	REVISED PER CLIENT COMMENTS
0	04/20/09	WK	RB	OF	APPROVED

KIRBY INLAND MARINE

**STRIPPING
PIPING FLOW DIAGRAM**

SCALE: NONE	KIRBY 28078	REV. 1
PAGE: 3 OF 3		