


NOTE 1: CONTAINMENT P/S

NO	DESCRIPTION	NO	DESCRIPTION
1C	CARGO TANK VALVE	19C	CARGO HEADER
2C	LOAD VALVE	30C	CARGO PIPELINE
3C	MASTER SUCTION VALVE	37C	CARGO DROP
4C	DISCHARGE VALVE	1S	SLOP TANK
5C	HEADER VALVE	—	— ABOVE DECK PIPING
6C	SALVAGE VALVE	—	— BELOW DECK PIPING
8C	RELIEF VALVE		
9C	CARGO CHECK VALVE		
13C	CARGO BLOCK VALVE		

TRINITY MARINE

2	10-14-22	MRV	DDA	LEP	REVISED PER CLIENT COMMENTS	
1	02-03-14	GP	GP	OF	REVISED PER CLIENT	
0	03-23-09	RB	RB	OF	APPROVED	
REV.	DATE	BY	CHK	APP	REVISION DESCRIPTION	



KIRBY INLAND MARINE

CARGO

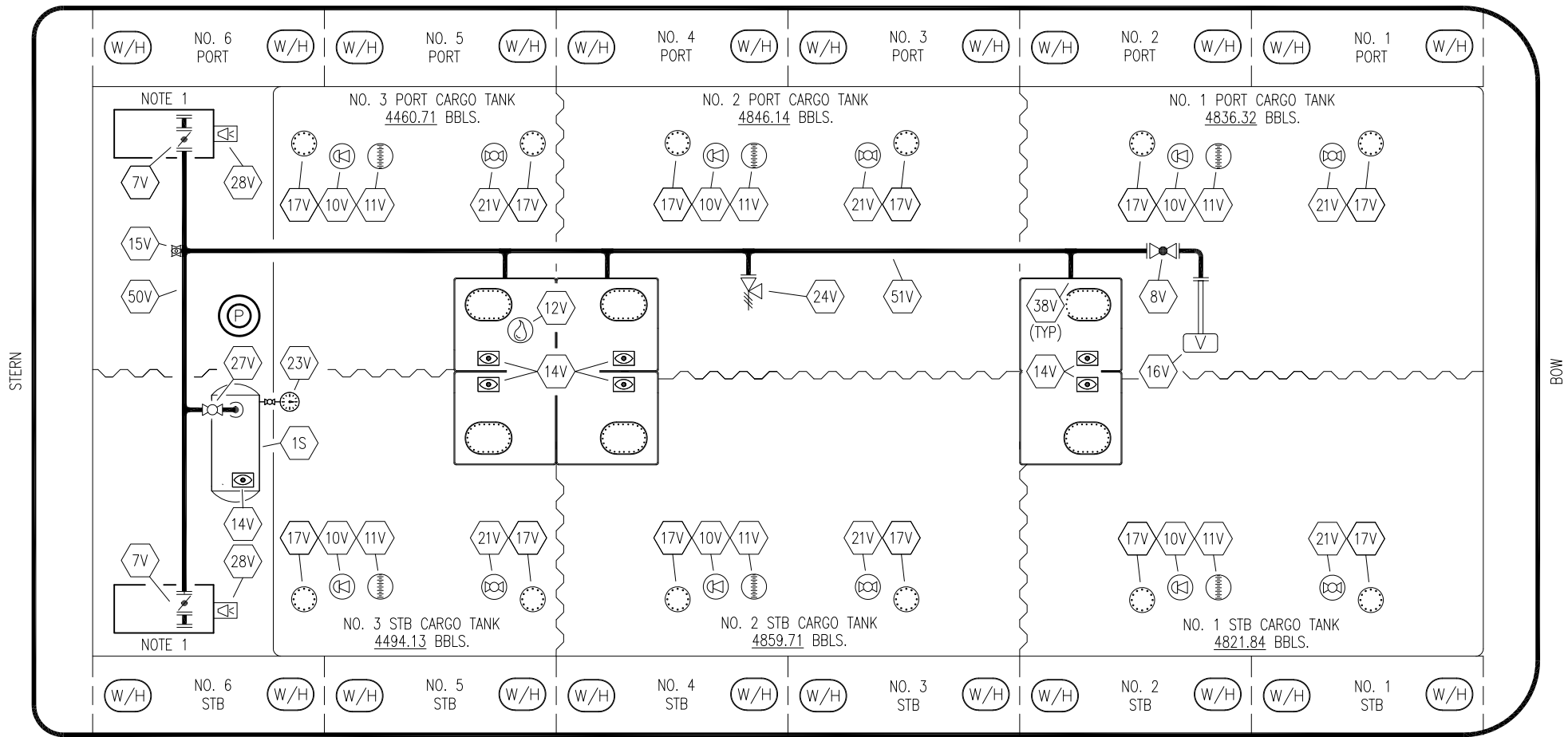
PIPING FLOW DIAGRAM

KIRBY 28073

SCALE: NONE

PAGE: 1 OF 3

REV. **2**



NOTE 1: CONTAINMENT P/S

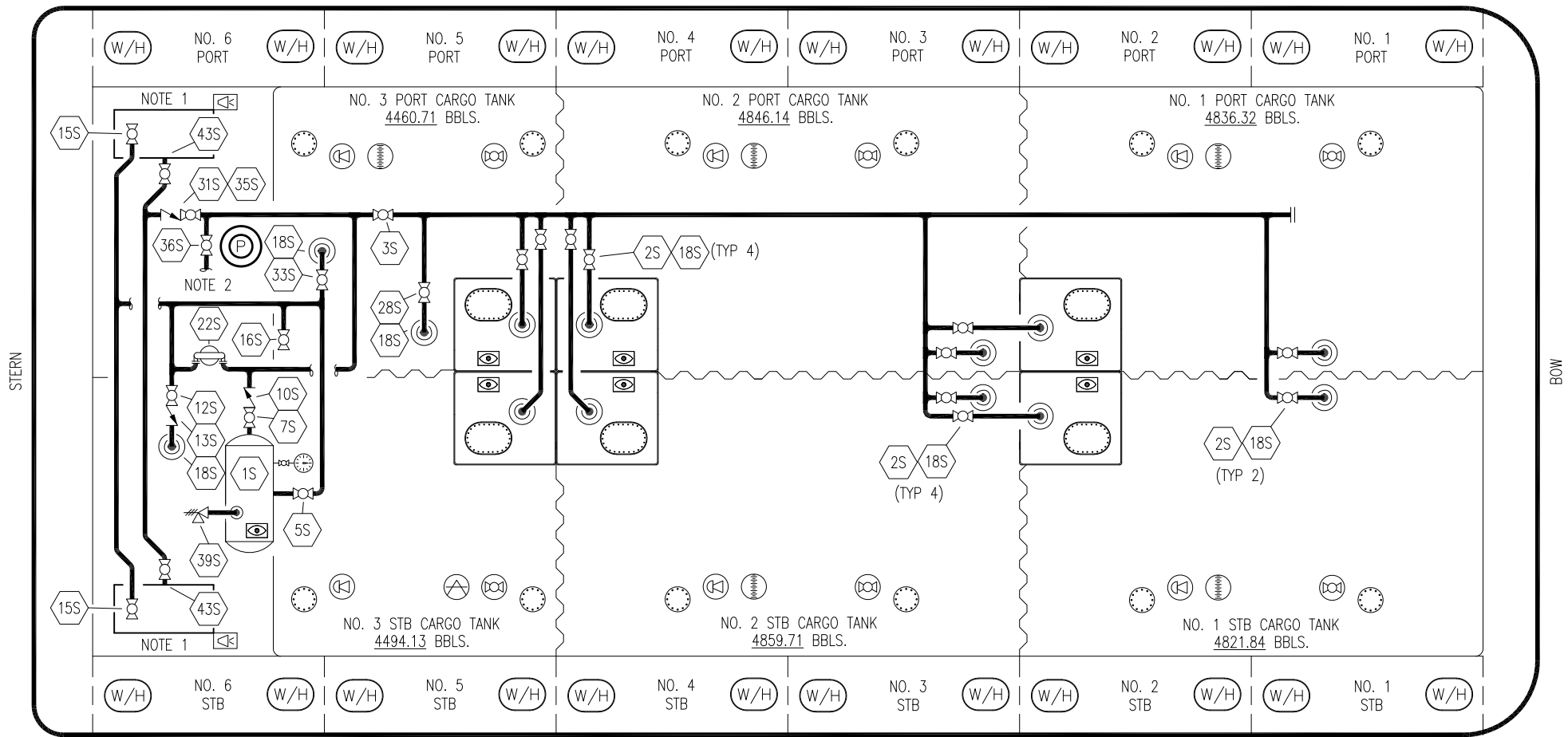
NO	SIZE	DESCRIPTION	NO	SIZE	DESCRIPTION
1S		SLOP TANK (3000 GAL.)	21V	2"	HERMETIC GAUGE
7V	8"	HEADER VALVE	23V	1/4"	PRESSURE/VAC GAUGE
8V	8"	VENT STACK VALVE	24V	6"	PRESSURE RELIEF VALVE
10V	8"	HIGH LEVEL/OVERFILL ALARM	27V	2"	SLOP TANK VENT VALVE
11V	8"	1 METER GAUGE STICK	28V		HIGH LEVEL DOCK ALARM
12V	2"	HERMETIC SAMPLE	38V		VAPOR PENETRATION
14V	8"	SIGHT GLASS	50V		VAPOR HEADER
15V	2"	INSPECTION PORT	51V		VAPOR PIPELINE
16V	8"	VAPOR VENT STACK			— ABOVE DECK PIPING
17V	19"	BUTTERWORTH			
19V		EMERGENCY SHUTDOWN SYSTEM			

TRINITY MARINE

KIRBY INLAND MARINE 

**VAPOR
PIPING FLOW DIAGRAM**

REV.	DATE	BY	CHK	APP	REVISION DESCRIPTION
1	10-14-22	MRV	DDA	LEP	REVISED PER CLIENT COMMENTS
0	03-23-09	RB	RB	OF	APPROVED



NO	DESCRIPTION	NO	DESCRIPTION
1S	SLOP TANK	22S	AIR DIAPHRAGM STRIPPING PUMP
2S	VALVE CARGO TANK	26S	STRIPPING HEADER BLOCK VALVE
3S	VALVE MAIN CARGO PIPING	28S	CARGO HEADER VALVE
5S	SLOP TANK SUCTION VALVE	31S	CHECK VALVE
7S	SLOP TANK VALVE	33S	PUMP WELL SUCTION
10S	SLOP TANK CHECK VALVE	35S	STRIPPING VALVE
12S	RETURN TO CARGO TANK VALVE	36S	STRIPPING PUMP DISCHARGE
13S	RETURN TO CARGO CHECK VALVE	39S	P/V VALVE
15S	DISCHARGE CARGO VALVE	43S	DRIP PAN SUCTION VALVE
16S	REMOTE SUCTION CONNECTION		
18S	STRIPPING DROP		

NOTE 1: CONTAINMENT P/S
 NOTE 2: TO CARGO PUMP DISCHARGE

TRINITY MARINE



KIRBY INLAND MARINE

**STRIPPING
PIPING FLOW DIAGRAM**

KIRBY 28073

SCALE: NONE		REV. 1
PAGE: 3 OF 3		

REV.	DATE	BY	CHK	APP	REVISION DESCRIPTION
1	10-14-22	MRV	DDA	LEP	REVISED PER CLIENT COMMENTS
0	03-23-09	RB	RB	OF	APPROVED